

Major Dairy Sales And Dispersals Nationwide



Reports from two sales for the week of July 4 to 9 showed 105 head averaging \$1,942.50. These sales were held in Washington and New York. The top prices at the sales were \$7,600 and \$5,950. Here is a brief look at the results of these sales.

HOLSTEIN

The SECOND GENESEE COUNTRY BREEDERS INVITATIONAL SALE, held in New York, averaged \$1,866 on 79 head. The highest bid of the day was \$7,600 on a Valiant daughter. This 5-year-old is a fourth generation to produce over 20,000 pounds of milk and is listed in the top 2,000 cows in the country for production.

During her current lactation, at 155 days, this Excellent cow has produced 17,995 pounds of milk and 780 pounds of fat.

Second in the bidding, with a price of \$7,000, was a choice of bull calves in a flush to Marshfield Elevation Tony. His dam classified VG-89 and her six dams were classified Excellent. Her best record to date was 21,580 pounds of milk and 771 pounds of fat.

A female choice of calves from the same flush secured the third high bid of the day, \$5,200.

William Kent was the auctioneer for the day, and the sale was managed by the Genesee Country Breeders.

The WASHINGTON STATE SALE averaged \$2,019 on 26 head. Topping the sale was a 3-year-old by Lime Hollow Elevation Mars. She sold for \$5,950 and won the State 2-year-old Futurity the day before. She is classified VG-86 and produced over 20,000 as a junior 2-year old.

Her next three dams are Very Good and Excellent. She is bred to Tradition to calve in December.

Second in the sale was a just fresh Valiant daughter with a price of \$3,600. She is out of a Very Good Lime Hollow Elevation Mars daughter who has records up to 23,000 pounds of milk.

Third in the bidding with a price of \$3,300 was bred heifer sired by Glendell. Her dam, an Excellent out of Locust Glen, has records up to 32,000 pounds of milk and 1,221 pounds of fat. This heifer will calve this month with a Chief Mark calf.

The sale was managed by the Nahomish Holstein Club and the Washington State Holstein Association. Ray Nelson was the auctioneer.

NATIONAL DAIRY COW SALE INDEX

© 1986 Lancaster Farming Newspaper

This sale index can help dairymen place a value on the dairy cows on their own herds. Breed organization sales and private dispersal sales reported in Lancaster Farming are included in the dollar averages.

	Ayrshire	Brown Swiss	Guernsey	Jersey
Year to date:				
Nation	721	940	961	949
Pennsylvania	1027	—	556	1332
Four previous weeks:				
Nation	—	—	2558	1036
Four previous weeks				
+/- year to date:	—	—	1597 higher	87 higher
	Holstein	Red and White	Milking Shorthorn	
Year to date:				
Nation	2048	2837	672	
Pennsylvania	1292	2837	922	
Four previous weeks:				
Nation	4341	—	—	
Four previous weeks				
+/- year to date:	2293 higher	—	—	

Get Into Farming Now

(Continued from Page A1)

cream that has been so successful that they want to increase their expenditures with us this year."

While the national beef associations have called for an investigation of the Futures Market, Klechner said he didn't sense that the members of the American Farm Bureau really want to do away with the Futures Market. "I think the average farmer thinks it's okay to investigate possible fraud. But I think he should look at the Futures Market in possible related forward contracting. Maybe even better

would be the use of options as related to the Futures Market," he said. "I personally have not done much in the way of forward contracting. But I'm looking closely at it right now. And we'll need to consider hedging part of our hog production for next year."

Klechner was elected president of the American Farm Bureau on January 16, 1986, after serving 10 years as president of the Iowa Farm Bureau Federation. He farms 550 acres in Iowa, specializing in corn and soybean

production and raises and markets about 18,000 hogs. He is especially interested in improving net farm income and works for Expanded Exports of U.S. Farm Commodities.

Eckel is a full-time farmer in Lackawanna county in partnership with his father and brother. Eckel's farming operation consists of more than a thousand acres. He is especially successful with a green wrap tomato production program and marketing operation.

TRUCKLOAD SALE \$9.99 Gallon

Our List \$23.99



Valspar Professional Quality

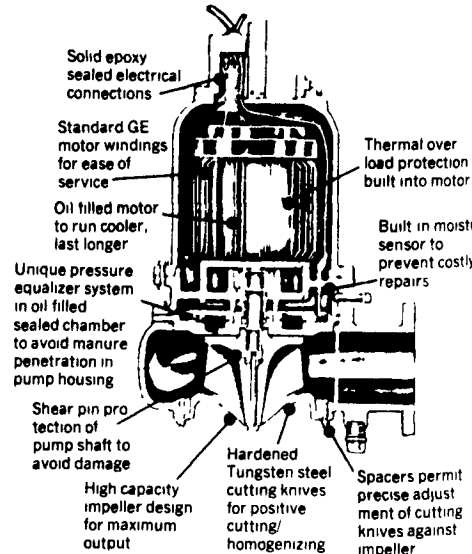
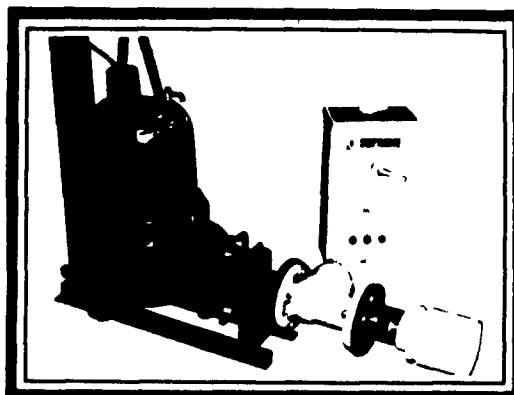
- Exterior Gloss White Oil Base House and Barn Paint
- Excellent Hide and Spreading Properties
- Brush, Roller or Spray

EPHRATA EAST END MART, INC.
 711 E. Main Street — VALSPAR PAINTS
 Mon. - Tues. 9:00 a.m. - 6:00 p.m. Wed. & Sat. 9:00 a.m. - 6:00 p.m.
 Tel. 733-8040 or 733-4388

!!INVENTORY CLEARANCE SALE!!

PUMPS - PUMPS AND MORE SUBMERSIBLE PUMPS!!

YOU CAN HELP US, WE CAN HELP YOU - NO DECENT OFFER REFUSED!
DAIRIES, CONTRACTORS, UTILITIES, LIQUID WASTE HANDLERS
CHECK THIS OUT AND GIVE US A CALL — NEW & REBUILT MODELS



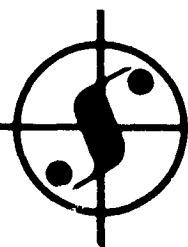
Single phase models available in 7.5 hp and 15 hp
 Three phase models available in 10 hp and 20 hp

Standard features

- High capacity impeller design for maximum output
- Hardened tungsten steel cutting knives for positive cutting/homogenizing action
- Oil filled motor to run cooler, last longer
- Built in moisture sensor to prevent costly repairs
- Thermal over load protection built into motor
- Shear pin protection of pump shaft to avoid the risk of mechanical damage
- Solid epoxy sealed electrical connections
- Standard GE motor windings for ease of service
- Unique pressure equalizer system

- Moisture sensor warning light
- Separate control cable to comply with UL standards
- Provision for remote stop/start button to save time during pump out
- Bases and half bases with breakaway fittings
- 1500 lb. capacity brake winch
- 4 square tube hoist post
- Cast iron ball check valve

All Sales Final - 6 Mo. Warranty On Parts



SUPREME FARMSTEAD EQUIPMENT

* A division of DeMuth Steel Products Company
 85 S. Groffdale Rd., Leola, PA 17540 717-656-4295 Ask For Ed James

We're Buying Quality!



Farmer's Cheese Co-Op Now Offers Premiums For Extra Quality Milk. We Want The Best Quality Milk Because Quite Simply, The Best Quality Milk Makes The Best Quality Cheese.

With the use of analytical and computer technology, we will pay you (based on the cheese and cream market) what a hundred pounds of your milk will yield in cheese and cream. Farmer's Cheese Co-Op will be paying its farmers on a bi-monthly basis, plus offering a group hospital insurance.

Quality Milk Costs More But We Think It's Worth It.

If you want more for your milk -
CALL (412) 946-8729
 Ask For Ron or Jack

Farmer's Cheese Co-Op Ass'n.



P.O. Box 198, New Wilmington, PA 16142 (412) 946-8729