

Try These Tips for Controlling Insects in Stored Grain

NEWARK, Del. — Wheat harvest is here and many farmers plan to store grain on their farms. But before filling bins with new grain, take time to clean and pest-proof them, says Dean Belt, University of Delaware extension agricultural agent.

"Wear good particle or dust respirators when going into any bin, and provide as much air circulation as possible," advises Belt, "as dust and molds can pose serious problems."

Clean dust, old grain and dirt off

all ceilings, ledges and walls. Remove spilled grain and trash to help reduce rodent problems. Repair bins to waterproof and rodent-proof them.

After this, Belt recommends spraying walls, ceilings and ledges with one of the treatments listed

below.

Methoxychlor 50% WP 1 lb/3 gal. water treats 500 sq. ft.; Methoxychlor 25% EC 1 qt/3 gal. water treats 500 sq. ft.; Malathion Premium Grade 1 pt/3 gal. water treats 500 sq. ft.; Pyrethrins 6%

EC plus piperonyl butoxide 60% 1 pt/7 gal. water treats 700 sq. ft.

Read labels carefully, follow directions and wear an approved chemical respirator while mixing and applying any of these pesticides.

"If you haven't already done it, clean old grain from the combine and all grain-hauling equipment, Belt says.

Producers can also add a grain protectant when filling bins. Apply this as the grain enters the auger. One product labeled for use directly on grain is premium grade malathion 57 percent EC. Use this at the rate of one pint in two to five gallons of water per 1,000 bushels of grain.

A few precautions can help prevent later problems, the agricultural agent says. Sanitize bins before filling them. Store only clean grain at the proper moisture level. Remember to use only labeled insecticides and proper safety equipment when cleaning and spraying.

More information on stored grain pests is available in a new fact sheet. For a copy, contact county extension offices in Newark (451-2506), Dover (736-1448) or Georgetown (856-7303).

New Jersey Meat Packer Ordered to Pay \$500 Penalty

WASHINGTON — A U.S. Department of Agriculture official said today that Royal Crest Meats, Inc., a meat packer at Trenton,

N.J., has been ordered to pay a \$500 civil penalty for doing business without a bond.

B.H. (Bill) Jones, head of

USDA's Packers and Stockyards Administration, said the firm was also placed under a cease and

desist order, similar to the permanent injunction.

Jones said the firm still has not filed the \$10,000 bond required by its volume of business, but is still purchasing livestock for slaughter at auction market at Hackettstown, N.J.; Ephrata, Pa., and Perkiomenville, Pa.

"Since the firm is continuing to buy livestock without bond coverage, USDA will seek action in the U.S. District Court to obtain compliance with the law and protection for livestock sellers," Jones said.

USDA Administrative Law Judge Dorothea A. Baker issued the order in default when Royal Crest Meats failed to file an answer to the federal administrative charges filed by USDA in December under authority of the Packers and Stockyards Act.

EPHA Schedules Empire Classic Show

WEEDSPORT, N.Y. — The Empire Polled Hereford Association will host its 9th annual "Empire Classic Show" on July 25 and 26 at the Cayuga County Fairgrounds in Weedsport, N.Y.

Over 100 head are expected to compete in classes for various age groups of bulls and heifers as well as cow/calf, steer and get-of-sire and offspring-of-dam classes.

An added attraction is that the event runs concurrently with the

Cayuga County Fair, and participants can enjoy the grandstand shows as well as stay over for the Sunday, July 27, Cayuga County Beef Show.

Judge for the event will be Howard Hoffman of Dunwalke Farm in Far Hills, New Jersey. He is highly regarded as an excellent cattleman by his peers in the Polled Hereford industry and is looking forward to judging this year's show, which should begin

about 10:30 Saturday morning.

Entries are due by July 10, with a \$7/lot entry fee (cow/calf is one lot) and a copy of the registration papers. Animals should be in place Friday evening and will be released Saturday evening after the show, unless exhibitors are staying over for the Sunday show. Health regulations should be met between June 26 and July 15. Questions and entry forms should be sent to Henry Bono, Brooker Hollow Road, Richmondville, NY 12149; call (518) 294-7716 (until 11:30 p.m.).

Deutz-Allis Lowers Finance Rate

MILWAUKEE, Wisc. — In keeping with the optimism for the future of the agricultural equipment market, Deutz-Allis Credit Corporation announced that it is reducing its standard retail finance rate to the lowest level in over a decade. "This new rate of 12.9 percent APR is for all new and used agricultural equipment retail contracts," said Jon Arno, Credit Corp. vice president of marketing.

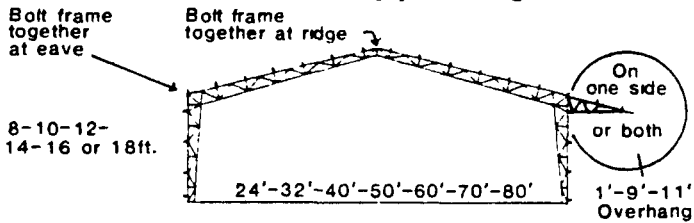
"This means that we can offer our customers any and all of the

available equipment discounts and still finance using the new 12.9 percent rate," continued Arno. "If the customer prefers the interest waiver option, the 12.9 percent rate is also the customer's contract rate."

This new rate is not only designed to give the farmer lower payments, but it also offers a flexible payment plan to fit into his cash flow. It also leaves the farmer's other credit sources open for his working capital needs.

PERKA BUILDINGS

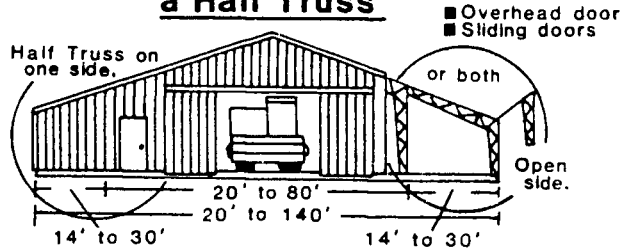
A size to suit your needs with or without Self-supporting Lean to.



FARM • COMMERCIAL • INDUSTRIAL

3"-12" Roof Pitch for more over head space.

For extra floor space at a low cost add a Half Truss



- OPEN CEILING-25% MORE USABLE SPACE
- NO ROT-ONLY STEEL TOUCHING CONCRETE.
- EXPANDABLE-ADD ON LATER BY SIMPLY REMOVING ENDWALL SHEETING.

- EASY TO INSULATE.
- 40 YEAR WARRANTY ON STEEL COLUMN & TRUSS.
- 20 YEAR WARRANTY ON STEEL CLADDING
- 8 MODELS TO CHOOSE FROM CUSTOM DESIGN AVAILABLE
- DO IT YOURSELF OR HAVE US ERECT IT FOR YOU.

Get Your FREE Perka book

To: PERKA BUILDINGS SYSTEMS
Box 166, RD #2
New Holland, PA 17557

Name _____
Address _____
Town/City _____ County _____
Telephone No. _____ Postal Code _____

I am interested in the following type of building
Width Length Size of Door
Implement Shed Dairy Hog Other
Workshop Loose Housing Stable
Industrial Commercial Riding Arena
Date of Planning To Build _____

or Call Now
(717)
354-4740

Fill out this card and mail it today

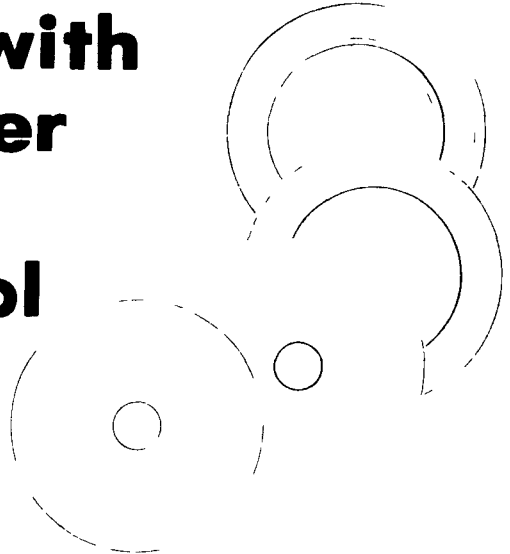
Faster baling with less horsepower plus Total Density Control

Gehl round balers give you more ways to save. First, they require less horsepower to operate than the competition. That adds up to big fuel savings — and less wear and tear on your tractor.

Designed for efficiency

Gehl's unique, patented baling chamber design saves you valuable time. That's because the unique roller arrangement provides a more circular bale chamber that starts bales quickly and takes your biggest windrows. At a faster speed than competitive machines. Whether you're working in the toughest hay, slippery straw or tangled and shredded cornstalks!

And, of course, the biggest potential savings of all uniformly shaped bales that stand up to weather retain valuable nutrients, and hold their shape. The secret is Gehl's "air-draulics," a system that gives you total density control (TDC®). With a simple adjustment of the hydraulic triggering



mechanism, you can determine the size of the bale core. And, by adjusting the hydraulic pressure up or down, you can select the ideal outer wrap.

Automatic bale wrap

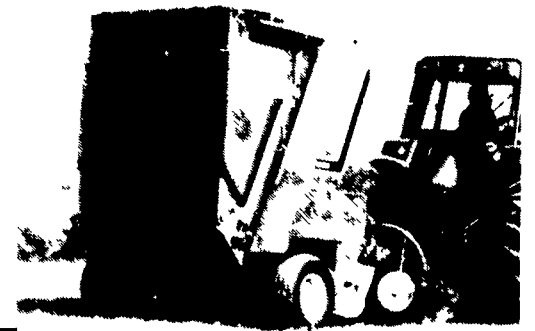
To finish off your bale quickly, Gehl's optional Auto-Electric Wrap system ensures a uniform twine wrap automatically.

For a bigger payoff, choose the only machine with TDC® — a Gehl round baler. Ask your Gehl dealer for a demonstration today. Gehl Company West Bend, WI 53095

Investing today in the future of agriculture

GEHL

1986 Gehl Company



— Ask your dealer about GEHL FINANCE —

A.L. HERR & BRO.
Quarryville, PA
717-786-3521

LEBANON VALLEY
IMPLEMENT CO., INC.
Richland, PA
717-866-7518

PETERMAN FARM
EQUIPMENT, INC.
Carlisle, PA
717-249-5338

MILLER EQUIPMENT
CO.
Bechtelsville, PA
215-845-2911

ELDER SALES
& SERVICE, INC.
Stoneboro, PA
412-376-3740

STOUFFER
BROS. INC.
Chambersburg, PA
717-263-8424

GEO. W. KINSMAN,
INC.
Honesdale, PA
717-253-3440

BINKLEY & HURST
BROS.
Lititz, PA
717-626-4705

NICHOLS FARM
EQUIPMENT
Bloomsburg, PA
717-784-7731

SPRINGS
EQUIPMENT, INC.
Springs, PA
814-662-2222

UMBERGER'S
OF FONTANA
Lebanon, PA
717-867-5161

HINES EQUIPMENT
Cresson, PA
814-886-4183
Bellwood
814-742-8171

BENNETT
MACHINE CO.
Milford, DE
302-422-4837

ARNETT'S GARAGE
Hagerstown, MD
301-733-0515

R.R. WALKER
& SON
Edinboro, PA
814-734-1552

PEOPLE'S
SALES & SERVICE
Oakland Mills, PA
717-463-2735

ECKROTH BROS.
FARM EQUIPMENT
New Ringgold, PA
717-943-2131

DAYTON
EQUIPMENT CO.
Dayton, PA
412-783-6990