

Polled Hereford Juniors Show 77 Head at Eastern Regional

WINSTON-SALEM, NC — The Tar Heel State hosted Polled Hereford juniors and a large gathering from 14 other states to the Eastern Regional Junior Polled Hereford Show, June 29.

Seventy-seven heifers were exhibited at the Regional in Winston-Salem, with Dr. A.L. "Ike" Eller of Virginia Tech,

Blacksburg, as judge.

From among the 77, Dr. Eller named CTF Special Kaye 513, by HH Jedi 60R, as the grand champion heifer, after having been the Division II champion. She also took the champion bred-and-owned position, being owned by Charles Mason Jr., Blaine, Tenn.

WOW Monica 60R 774T, sired by

HH Jedi 60R and owned by Kerri Wilson of Advance, N.C., picked up the reserve grand champion heifer slot at the show, following her win as Division I champion.

Division I reserve heifer spot went to SPH Miss Dowry 58T, sired by PS Intimidator and owned by Neil Fishel of Winston-Salem, N.C. Neil also claimed the Division III

championship with Beartooth Nan 407T, by Tonne Rolls Royce 106R.

Division II reserve heifer title went to PS Victoria 514, sired by Stlbrk Gilead 67K, "The Stick," and owned by Stephen Fritz of Manns Choice, Pa. Forder Gilead Tara 3T took the Division III

reserve heifer ribbon home. She is by "The Stick" and owned by Jami Miller, Huntington, Ind.

Owned by Joe B. McCord III, Winchester, Ky., Avalons Ms Stick 847 picked up the reserve bred-and-owned heifer title. She is by "The Stick."

Ram Selection Meeting Scheduled at Manheim

MANHEIM — Sheep producers interested in learning about the characteristics of various breeds

of sheep, as well as selecting a ram, can attend a ram selection meeting at 7:30 p.m., July 14, at the Manheim Farm Show grounds,

Manheim.

Sponsored by the Lancaster County Sheep and Wool Growers Association, the meeting will be moderated by local sheep producer Clyde Brubaker.

Representative stud rams from the following breeds will be available for inspection, and their exhibitors will comment on their respective breeds: Dorset, Hampshire, Shropshire, Suffolk, Cheviot, Southdown, Romney, Karakul, Corriedale, Katahdin, Scottish Black Face, Tunis, Rambouillet, Columbia and Merino.

Dorsets. Breeders from each of the respective breeds will be coming from throughout the East, New England states and the Midwest. Only quality rams and ewes will be offered.

There will also be a food stand and other sheep-related booths. For more information or directions to the fairgrounds, contact Tim or Sarah Fleener at 717/898-0496.

Manheim to Host Mid-Atlantic Sheep Show/Sale

MANHEIM — The Pennsylvania Hampshire Sheep Association is sponsoring the Mid-Atlantic Classic Sheep Show and Sale to be held at the Manheim Fairgrounds, Manheim, on July 19.

The show will begin at 8 a.m. and the sale will follow at 1 p.m. The sale will offer purebred Hampshires, Polled Dorsets and Horned

Virginia Angus

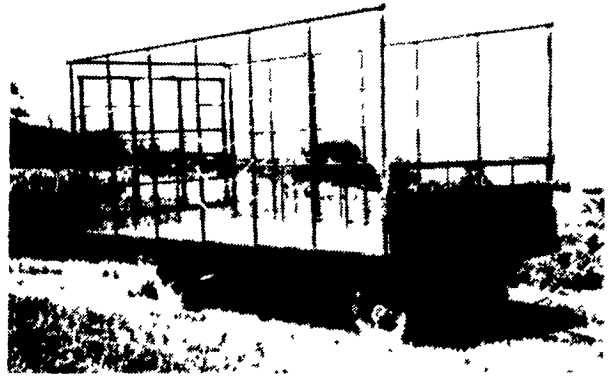
(Continued from Page D5)

cow/embryo calf pair went to Dogwood Knoll and White Hall Farms' entry, Antietam Bright Star, another Pine Drive Big Sky daughter, and her calf sired by HA Wrangler. Cobble Pond Miss Zara, also sired by Pine Drive Big Sky, along with her daughter, Northcote Lmelight Sara, sired by Harrison, were the champion owned cow with natural calf pair. The reserve championship for this same pairing likewise went to a Pine Drive Big Sky dam, RFF Idelette Gal and her calf by Genetics Yukon Jack, RAB Idelette Gal,

exhibited by Castle Rock Farm of Pulaski and Hale-O Farm of Doran.

White Hall Janessa and her calf, Windmere Janessa sired by Harrison, was the champion bred and owned cow with embryo calf for White Hall Farms of North Garden and Windmere Farm in Earlsville. Yet another Pine Drive Big Sky daughter, Zeuswyn Juana Erica from a dam by Manning of Zeuswyn, took the reserve champion bred and owned cow with natural calf pair honors with her bull calf, Zeuswyn New Yorker sired by Cobble Pond New Yorker.

BEST BUY of the YEAR



- 6" Steel Main Beam
- 2" Vertical Tubing Drilled so that the 1" Horizontal tubing extends Full Length of Wagon
- Front-Side and Rear Loading and Unloading
- 2x8 Pressure Treated Lumber Floor
- 2x6 Oak Cross Beams
- Beds are 8' wide, available in 16, 18 or 21' lengths
- Racks are 90" high.
- NEW FEATURE: 6" Channel across back for pushing wagon without damaging bed

FOR FURTHER INFORMATION, CALL YOUR LOCAL DEALER:

LOST CREEK IMPLEMENT
Oakland Mill, PA
717-463-2161

MELROSE FARM SERVICE
Greencastle, PA
717-597-3138

KELLER BROS.
Lebanon, PA
717-949-6501

DUNKLE & GREIB
Mill Hall, PA
717-726-3115

WALTER G. COALE, INC.
Churchville, MD
301-734-7722

TOBIAS EQUIPMENT CO., INC.
Halifax, PA
717-362-3132

NORTHEAST DISTRIBUTING
West Clifford, Pa.
717-222-9020

VALLEY IMPLEMENT SALES
Harrisonburg, VA
703-434-9961

CHAMBERSBURG FARM SUPPLY
Chambersburg, PA
717-264-3533

OXFORD GREENLINE, INC.
Oxford, PA
215-932-2753

PAUL SHOVER'S, INC.
Loysville, PA
717-789-3117

A.B.C. GROFF
New Holland, PA
717-354-4731

CARLISLE FARM SERVICE
Carlisle, PA
717-243-4419

CLARK'S FARM SUPPLY
Williamsport, PA
717-494-0060

Manufactured By

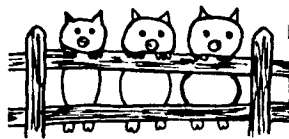
CLW MANUFACTURING, INC.

R.D. #2, Box 8
Newburg, Pa. 17240
717-423-6794

SOYBEAN ROASTING ON YOUR FARM

Don't Waste It - Roast It!

This Little Piggy Went To Market,
This Little Piggy Stayed Home,
This Little Piggy Had...



ROASTED SOYBEANS



Make Higher Profits From All Grains.
Roasting Improves TDN, Destroys Mold,
Retards Toxins & Removes Moisture.

CUSTOM GRAIN ROASTING
DONE IN PA. &
SURROUNDING STATES

DALE L. SCHNUPP
RD 6, Lebanon, Pa. 17042
PH: 717-865-6611

ALLEN SUMMERS
703 E. Christine Rd.
Nottingham, Pa 19362
215-932-4761

DAVID N. GROFF
RD 1 Box 506C
Lewisburg, Pa 17837
717-966-3593

KATOLIGHT!

THE PIONEER IN BRUSHLESS P.T.O. ALTERNATORS!! YEARS OF EXPERIENCE HAVE GONE INTO THE ADVANCED DESIGN OF THESE POWERFUL BRUSHLESS ALTERNATORS. THE RESULT IS THE UNIQUE COMBINATION OF...



★ 300% Surge Capacity: For Superior motor starting capabilities

★ Totally Brushless Design: For greater reliability and more positive voltage build-up after long periods of idleness



24 HR. EMERGENCY SERVICE BY RADIO DISPATCHED SERVICE PERSONNEL

Model Selection Chart

Model No	Watts	Momentary Surge Watts	Minimum Required HP	Volts	C B Amps	Phase	Wire	Approximate Wt Net Lbs	Ship Lbs
25LR1	25,000	75,000	40	120-240	100	1	3	475	500
35LR1	35,000	105,000	55	120-240	150	1	3	580	600
45LR1	45,000	135,000	70	120-240	175	1	3	670	730
55LR1	55,000	165,000	86	120-240	225	1	3	730	750
85LR1	85,000	255,000	130	120-240	350	1	3	795	860

USED UNITS ALSO IN STOCK

Distributor for DE, MD, NJ & PA

MARTIN MACHINERY
SALES - SERVICE - RENTALS
P.O. Box 35, Martindale, Pa. 17549
215-445-4585