

TRACTORS

AC 7030	AC 7010D	AC XT190D	IH 806
AC 7060	AC 200	AC 180D	JD 2010
AC 7040D	AC 210	AC D19D	MF 65G
AC 7045D	Oliver Super 77	AC D14	Case 1490
AC 7050D	AC 655 Crawler	AC 5050D	JD 450 Crawler
AC 7020D	AC 7000D	AC 5040D	Oliver 1650D

Used Hay Wagons

Used N.H. 315 Baler With Thrower, Like New

Used Gehl Mower Conditioner

USED COMBINES (LIKE NEW)

A.C. Models: G-C-N-L-F

These Combines are in Excellent Condition

USED FORAGE HARVESTORS:

GEHL I.H., N.H.

NI 708 UNI-SYSTEM, HYDRO DRIVE w/717 COMBINE, CORNHEAD & GRAINHEAD
NI 702 HUSKING BED AND PICKER

USED 4 & 6 ROW CORN PLANTERS

GRUMELLI FARM SERVICE

Quarryville, Pa.
717-786-7318



IH TRACTOR SALVAGE PARTS

Savings to 50% & More

BATES CORPORATION

14th AND FIR RD., BOURBON, IN 46504

PARTS DISMANTLED CLEANED & READY FOR SHIPMENT

WE SHIP UPS, TRUCK, BUS

FOR THOSE HARD-TO-FIND & DISCONTINUED ITEMS

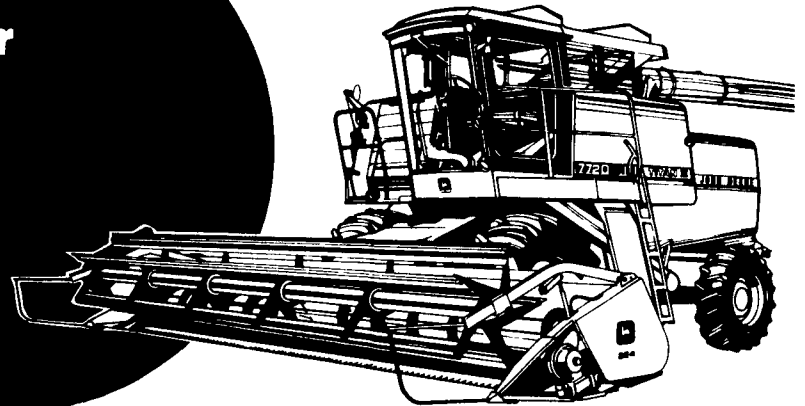
Call the Parts Specialists: 219-342-2955

USED BELTING MATERIAL RUBBER MATS FOR

Comfort Stalls, Free Stalls
Horse Stalls, Horse and Cattle
Trailers,
Hog Houses

Paul N. Brubacher
215-286-5298

"The sooner you buy the bigger you save" SALE



John Deere combine savings countdown

Buy your new John Deere combine now and you can save several ways. The sooner you buy the more you save. We've also got some great deals on used combines.

- Interest-free financing* until January 1, 1987, on new and used combines.
- Discount in lieu of finance waiver on new combines only.
- Special factory discounts on combines and headers passed on to you.
- Check us for details. Savings vary by model and year.

*Availability of John Deere financing subject to approval of credit. These offers may be withdrawn at any time.

See us right away-the sooner the better

JOHN DEERE FACTORY AUTHORIZED CLEARANCE

Cooper Ent., Inc.

W.N. COOPER & SON, INC.

Cecilton, Md.
301-275-2195



Chestertown, Md.
301-778-3464

QUALITY USED EQUIPMENT

COMBINES

- MF 510, 16' Cutterbar, 4 R Wide CH, 1977, \$7,500
- JD 7700 Factory, Rear Drive, 1977 w/JD 216 Flex Cutter Bar
- + JD 7700 Hydro, Rotary Screen, 15 ft Platform, 1971
- JD 7700, 15' Platform, 1971
- JD 6600, Rotary Screen, 2172 Hrs 14' Cutterbar, 1974
- JD 7700 Gear Drive, Rotary Screen, 15' Cutterbar, 1975
- JD 7700 Gear Drive, Rotary Screen, 16' Flex Head, 1976

• JD 8820 4wd. 2550 Hrs. 1980
• JD 8820 4WD, 1,030 hrs., 1982 w/JD 220 Flex Cutter Bar & JD 843 Corn Head

- + JD 15' Rigid Platform
- + JD 643 CH 6 R Narrow Old Style
- + JD 643 CH 6 Row N New Style

PLANTING EQUIP.

- + Oliver Drill 13x7
- + AC 330 4 R Planter
- + JD 1240 4 R Plate Planter

- + JD 1240 4 R Plateless w/Fert Planter
- + JD 1440 4 R No-Til Planter
- + JD 7000, 8RN No-Till Liq Fert
- JD 7000 Front Fold No-till Coulters, Liq Fert

TRACTORS

- + JD 4650, 500 Hrs., Duals Excellent Condition
- + JD 4230, QR, 4 Post
- + JD 1250, MFWD

• '85 JD 2550 Cab & Air 41 Hrs., Like New
• '83 JD 4050 w/MFWD, Cab & Air, 400 Hrs.

- '72 JD 1520 Gas
- '74 IH 1066
- '69 JD 4020, PS
- '71 JD 4620, Cab, Dual, 20.8 Tires
- '73 JD 4430, Cab & Air, QR Dual 18 4x38
- + IH Farmall H w/Loader
- IH 184 Low Boy w/60" Woods Mower
- IH 154 Low Boy w/60" Woods Mower
- JD 2440 Dsl w/145 Loader, 1980
- + Deutz DX110, Cab, Air, Sharp, 1980
- Deutz DX120, Cab, Air, 1981, \$12,500
- + JD 4010 Dsl, WF

TILLAGE

• JD 115 Disk 10 ft 2 in like new w/Harrow, done 20 acres

- JD 210 Disk 14 ft 3 in w/Buster Bar
- + IH 18 1/2 Field Cultivator
- Graber 26" Flex Fold Chisel Plow

MISC.

- JD 27 Flail Shredder
- JD 675 Skid Loader 85 Hrs. new model
- JD 35 Harvester w/2RN or 2 RW Head
- JD Rotary Hoe 3 Pth
- Century Recycling Sprayer
- + JD 6 1/2 Ft. Rear Blade
- JD RM 630 Cultivator
- + Midwest Buster Bar 14'
- + JD 346 Wire Tie Baler

• JD 350 Sickle Bar Mower, 3 Pt., Like New, cut 5 acres

+ IH 435 Baler
• JD 336 Baler

- JD 15A Flail Chopper
- + IH 60 Flail Shredder
- + NH 488 Mower Conditioner
- + JD 1209 Mower Conditioner
- + 7 Shank Aerator

+ Cecilton location

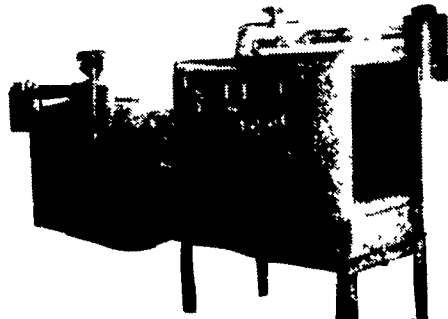
• Chestertown location

Complete

POWER UNITS

471 DETROIT (REBUILT)

In Stock And Ready To Go To Work



Including:

- Clutch
- Radiator
- Air Cleaner
- Hyd. Governor
- Housing
- Gauges
- Frame
- Tachometer With Hour Meter

Used For

Portable Feed Mills

Irrigation Systems

Industrial Applications

CALL: **FEEDMOBILE INC.**
717-626-2680

727 Furnace Hills Pike
Lititz, PA 17543

TOLL 800-528-6695 U.S.
FREE 800-528-6693 PA



1500-gal. Tank Will Load in Approx. 1 1/2 Min.

Check These Outstanding Features on the SLURRY BUGGY

A liquid manure spreader that loads and unloads and has no chains, bearings, fans, augers, or moving parts that touch manure.

- ✓ Tanks are made of 5/16 thick metal
- ✓ Large air cooled vacuum pump
- ✓ Pump has not only a primary trap but also a large secondary moisture trap
- ✓ Pump has an air pre-cleaner

- ✓ A 6 inch hydraulic operated brass valve for unloading
- ✓ Has 3 different manure spreading patterns
- ✓ Tank has a float level indicator and sight glass
- ✓ A 20 inch rear manhole for easy access to tank
- ✓ Priced at \$5 625

Optional Features:

- Heavy Duty tool bar with tooth spring loaded injection
- 6-inch side valve
- large flotation tires

Farmers rebuild your tanker with one of our new pumps (192 cfm @ 10 HG)

\$1,275

We have 6" and 8" Tapered brass valves for your Liquid Manure Handling Needs

SLURRY BUGGY EQUIPMENT

R.D. 2, Box 148

Ephrata, Pa. 17522

(717) 859-3869