



Livestock market and auction news

Shenandoah Valley Livestock

Harrisonburg, Va.
Saturday, June 28

Report supplied by auction
FEEDER CATTLE: All classes steady to \$2 higher.

STEERS: M&L-1 300-500 lbs. 59.50-66.00; 500-700 lbs. 54.00-57.25; 700-1000 lbs. 49.50-55.60; Holstein 300-1000 lbs. 43.50-51.00. S-L&M&L-2 300-500 lbs. 46.00-52.00; 500-700 lbs. 46.50-52.50; 700-1000 lbs. 45.50-51.00.

FEEDER BULLS: M&L-1 300-500 lbs. 52.50-58.00; 500-700 lbs. 45.50-49.50; 700-1000 lbs. 40.00-47.75.

HEIFERS: M&L-1 300-500 lbs. 47.50-52.50; 500-700 lbs. 46.00-52.50; 700-800 lbs. 41.50-44.00. S-L&M&L-2 300-500 lbs. 42.00-45.00; 500-700 lbs. 47.50-52.50.

STOCK COWS: w/calves, Beef 315.00-450.00; Baby Calves 15.00-108.00, Large 65-108, Small 15-50.

SLAUGHTER COWS: Trend 2.00-3.00 lower. Utility & Commercial 2-4 28.00-37.00; Canner & Cutters 1-3 24.00-32.50.

SLAUGHTER BULLS 1&2:

39.00-47.25.

LAMBS: Trend 2.50 Lower. Blue O High Choice & Prime 70.25; Red O Choice 60.00; Feeder Lambs Choice 66.00; Slaughter Ewes 10-23; Head Ewes 18-34.

HOGS: US 1-3 200-240 lbs. 58.60; Sows 1-3 34.50-37.00; Boars 30.00.

VEAL: Choice & Prime 50.00-59.00; Good 45.00-49.00.

SLAUGHTER CALVES: Good & Choice 46.50-53.00.

Virginia Cattle

Richmond, Virginia
Northern, Va.

Thurs., June 26 to

Wed., July 2, 1986

Report Supplied by VDA
Head Count: 5,788

Trend: Steady to 3.00 higher.

STEERS: Medium 1 300-500 lbs. 51.00-65.00; 500-700 lbs. 50.00-61.00; 700-1000 lbs. 48.00-56.00. Large 1 300-500 lbs. 57.50-65.00; 500-700 lbs. 53.00-60.00; 700-1000 lbs. 48.50-56.50. Small 1 300-500 lbs. 56.00-61.00; 500-700 lbs. 45.00-55.25; 700-1000 lbs. 45.50-50.00.

HEIFERS: Medium 1 300-500 lbs. 45.50-54.00; 500-700 lbs. 45.00-55.25; 700-900 lbs. 44.50-50.50. Large 1 300-500 lbs. 45.00-55.00; 500-700 lbs. 48.50-53.50; 700-900 lbs. 46.00-47.50. Small 1 300-500 lbs. 42.00-50.50; 500-700 lbs. 40.00-45.00.

lbs. 45.00-53.00; 500-700 lbs. 41.50-54.50; 700-900 lbs. 41.25-52.00. Large 1 500-700 lbs. 52.00; 700-900 lbs. 46.00. Small 1 300-500 lbs. 42.00-50.50; 500-700 lbs. 47.00-47.50.

South & Southwest Va.

STEERS: Medium 1 300-500 lbs. 55.00-67.50; 500-700 lbs. 53.75-59.50; 700-900 lbs. 46.50-55.00. Large 1 300-500 lbs. 55.75-64.25; 500-700 lbs. 54.75-60.00; 700-900 lbs. 49.25-54.75. Small 1 300-500 lbs. 51.00-60.00; 500-700 lbs. 46.00-55.50; 700-900 lbs. 46.00.

HEIFERS: Medium 1 300-500 lbs. 45.50-54.00; 500-700 lbs. 45.00-55.25; 700-900 lbs. 44.50-50.50. Large 1 300-500 lbs. 45.00-55.00; 500-700 lbs. 48.50-53.50; 700-900 lbs. 46.00-47.50. Small 1 300-500 lbs. 42.00-50.50; 500-700 lbs. 40.00-45.00.

Eighty-Four Livestock

Eighty-Four, Pa.
Monday, June 30

Report supplied by PDA

CATTLE 373. Compared with last Monday's market: Slaughter cows steady to weak...Choice slaughter steers 53-55, Good 49.00-55.00, Standard 44.25-48.50, Utility 38.00-44...Few Choice slaughter heifers 49.50-53.50, Good 46.00-49, Standard 41.50-44.50, Utility 38.50-41.50. Breaking Utility & Commercial slaughter cows 36.75-40, few 41.00, Cutter & Boning Utility 34.00-38, Canner & Low Cutter 30-34.50, Shells down to 20...Yield Grade No. 1 1200-2100 lbs. slaughter bulls 44.50-49, #2 1000-1400 lbs. 39.50-44...Feeder Cattle: Medium Frame No. 1 (few) 290-340 lbs. steers 55.00-60, #2 3-500 lbs. 48.00-52...Medium & Large Frame #1 350-600 lbs. heifers 43.00-50, few Large #2 6-900 lbs. 37.00-

44...Medium Frame #2 380-600 lbs. bulls 45.00-51.00.

CALVES 253...Good vealers 60.00-66, Standard 49.00-56, Standard & Good 90-120 lbs. 53.00-63, 60-85 lbs. 48.00-54, few Utility 55-80 lbs. 31.00-40...Farm Calves: Holstein Bulls 90-125 lbs. 70.00-110.

HOGS 180...Barrows and gilts 50 cents to \$1 higher...US No. 1-2 210-250 lbs. 59.50-60, No. 1-3 210-255 lbs. 58-59.25, No. 2-3 215-275 lbs. 54-55.00, lot No. 1-3 187 lbs. at 52.50, No. 2-4 280-325 lbs. 47.75-50. US No. 1-3 380-600 lbs. sows 45.00-48, No. 2-3 4-700 lbs. 40-45.00. Boars 34.00-42.50.

FEEDER PIGS 7...Few US No. 1-3 35-45 lbs. feeder pigs 35.00-40 per head.

SHEEP 200...Spring slaughter lambs steady...High Choice & Prime 75-95 lbs. 73.00-79, 50-65 lbs. 77.00-81, Choice 75-95 lbs. 65.00-71, 100-112 lbs. 64.00-68, few Good & Choice 40-60 lbs. feeder lambs 60.00-70...Slaughter ewes 22.00-24.50.

Peoria Cattle

Wednesday, July 2, 1986

Report Supplied by USDA

Compared with last weeks close slaughter steers closed 3.00 to 3.50 higher; Heifers closed 2.50 to mostly 3.00 higher. Cows closed weak to 1.00 lower and bulls were not well tested. Bulk of receipts Monday with not enough late in the week to adequately test the market. Supply mainly good to average choice slaughter steers and heifers with 5% cows. Estimated receipts this week about 1800 as compared with actual receipts of 1522 last week and 1769 a year ago.

SLAUGHTER STEERS: Choice 2-4, mostly 3 1050-1375 lbs. 58.50-59.50, part load 60.00; 975-1050 lbs. 57.00-59.00. Mixed good and choice 2-3 950-1150 lbs. 54.00-57.00. Good 2-3 900-1100 lbs. 51.00-54.50. Few mixed good and choice 2-3 Holsteins 1175-1350 lbs. 43.00-49.00.

SLAUGHTER HEIFERS: Choice 2-4, mostly 3 950-1150 lbs. 56.00-57.50; 875-950 lbs. 54.50-56.50. Mixed good and choice 2-3 950-1150 lbs. 53.00-55.00. Good 2-3 800-1000 lbs. 50.00-53.00.

COWS: Breaking Utility 2-3 35.00-37.00 cutter and boning utility 1-2 34.00-38.00, few high dressing 38.00-40.00. Canner and low cutter 32.00-35.00.

BULLS: YG 1-2 1500-2200 lbs. 44.00-51.00.

Shippensburg Produce Auction

(Leinbach's)

Shippensburg, PA

Tuesday, June 26 & July 1

Report Supplied by Auction
Blueberries 8.00-12.50 12 pt. flat.
Cabbage 3.00-4.00 bu.
Carrots 3.40 bu.
Cauliflower mostly .30-.65, some up to 1.00.

Cherries (Bing) 4.00-8.25 8 qt. flat, (Sour) 4.35-4.75 8 qt. flat.
Corn 7.75-8.75 crate.

Cucumbers 2.25-5.50 1/2 bu.
Eggs .65-.70 (Lg.).
Onions (Spring) 2.00-3.00 1/2 bu.
Peaches 1.75-1.85 1/2 pk.
Peas 7.00-9.00 bu.

Pickles 3.25-6.50 1/2 bu.
Potatoes (50#) 7.75-8.85, (20#) 3.00-5.20, (10#) 1.75-1.95.

Raspberries 9.00-18.00 12 pt. flat, 8.00-8.50 8 qt. flat.
Red Beets 3.00-6.00 bu.
String Beans 6.00-11.50 bu.
Tomatoes 9.00-14.00 box.

Watermelon (FL) 12# up .60-.85, 15# up 1.00-1.60.
Mixed Squash 1.25-4.00 1/2 bu.
Zucchini Squash 2.50-3.50 1/2 bu.

Penns Valley Livestock

Centre Hall, Pa.

Tuesday, July 1

Report supplied by Auction
Beef Cows: Utility and Commercial 37.50-39.75; Cutters 35.50-37.00; Canners 31.00-34.75; Shells 26.50.

Heifers: Standard 41.00-44.60; Commercial 37.60-39.75.

Bulls: Good 46.75-49.75; Standard 44.50-46.50.

Feeder Cattle: 300-500 lbs. large frame 48.50-59.50; 300-500 lbs. small frame 46.00-49.25; 500-700 lbs. large frame 45.00-53.50; 500-700 lbs. small frame 46.00-48.25.

Veal Calves: Choice 78.00-85.00; Good 61.00-77.00; Standard 50.00-59.00; Utility 41.00-48.00.

Farm Calves: Bulls 75.00-98.00; Heifers 60.00-65.00.

Hogs: 55.10-56.50.
Boars: 31.00-34.10.
Shoats: 25-30 lbs. per head 12.00-16.00; 30-35 lbs. per head 20.00-29.00; 35-50 lbs. per head 31.00-38.00.

Lambs: 70.00-72.00.

WANTED IMMEDIATELY

Hog Finishing Floor:
400-600 head capacity desired.
We'll provide contract for guaranteed income.

Hershey Ag Service

1-800-544-4574

or

717-653-8783

50 mile circumference of Lancaster



GIGANTIC SELECTION
in
Lancaster Farming's
CLASSIFIEDS



ATTENTION FARMERS

EVERY MONDAY
HATFIELD PACKING CO. and
MOYER PACKING CO.

Will Receive Your
Hogs and Cattle at the
DANVILLE LIVESTOCK MARKET

RD 4, Danville, PA

- We will receive your hogs from 8 AM to 12 Noon every Monday. Your hogs will be weighed and paid for immediately.
- We will also accept your sows & boars.
- Your cattle will be received from 12:30 to 5 P.M. We will either pay you for your cattle immediately or you may sell them dressed weight.
- There will not be a commission or yardage fee deducted from your check.
- You may call our office Monday morning and we will be able to tell you the base price for hogs for the day.

MELVIN M. LEHMAN - Owner
Danville Buying Station

Phone: 717-275-2880

TOP PRICES FOR DOWN, CRIPPLED AND AS IS COWS, BULLS & STEERS

Slaughtered Under
Federal Inspection
Paid On Dressed Weight

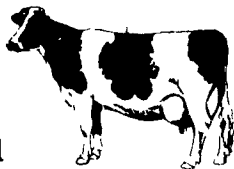
Tom Mulvaney
Livestock Trucking
(201) 454-4247

HANDLING:

Warren, Hunterdon, Sussex
And Somerset Counties, New Jersey

IN PENNA:

Northampton,
Bucks, Lehigh
And Parts Of
Carbon & Schuylkill
Counties



SWINE PRODUCTION SALES AND SERVICE

Complete Feeding
Programs and Services

Feeding Programs to
Meet Your Individual
Needs

Computerized
Record Keeping
System

Providing Veterinarian
Service

PA. Toll Free
1-800-468-5524



419 W. High Street
Elizabethtown, PA
17022

Supplying Farm Fresh
Feeder Pigs

Marketing and Hedging
Services

Marketing of Genesis
Breeding Stock

Developing Individual
Financial Programs

Direct Dial
(717) 367-1525

WINDROW HAY FLUFFER



A New Principle in Hay Drying.
WORKS ON THE DAMP UNDER SIDE OF THE HAY WITHOUT THE USE OF DAMAGING TINES MAKING IT THE GENTLEST METHOD AVAILABLE

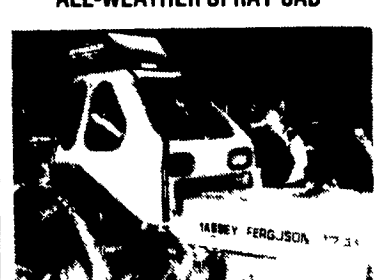
"THE ALFALFA DRYER"

The hay can be moved over without turning
DESIGNED FOR ALFALFA GRAIN HAY SEED CROPS WHEAT AND ALL OTHER WINDROWED CROPS THAT REQUIRE GENTLE HANDLING
A HAY DRYING TOOL FOR ALL CUTTINGS OF HAY

BALER EQUIPMENT CO.

Dept P.O. BOX 1837 • PORTLAND, OR 97207 • 503-224-9059

ALL-WEATHER SPRAY CAB



Will Fit Most Any Tractor

- ★ Provides Protection from Spray
- ★ Dual Charcoal Filtration
- ★ Available with Heat & A/C
- ★ A Color to Match your Tractor

D & H Cattle Transport

Local and Long
Distance Hauling
With A 24 Ft
Gooseneck Trailer

Call Don At
717/284-2580
Lancaster, Pa