

MAILBOX MARKET FOR SALE

AKC Chow Chow pups, \$110 Mon. thru Fri. 7 a.m. to 5 p.m. Ask for Amos. 215-768-8620
 Standardbred driving horse, good brood mare, raised 1 colt. Also 4 farrowing crates and Conde vacuum pump. Chester Co. 215-273-3487
 MH Clipper combine, \$150.; Old style 1000 gallon DeLaval bulk tank, \$2,500.; 200 glass gallon jugs, \$10. Berks. 215-926-1175

Dorset ram, 3 yrs. old, \$50; Suffolk ewe, 4 yrs. old, \$25. Lebanon Co. 717-838-9094.

9 month old Yorkshire Boar, 4 younger Crossbred Boars, several Bred Gilts due July, August. York Co. 717-432-3555 after 4 p.m.

Good used storm front carriage, \$1,500. Christian S. Stoltzfus, R.D.4, Box 129, Quarryville, Pa. 17566.

Belsaw sawmill 48" insert tooth blade, Hercules 48" track, complete sawmill, \$5,000. North'd Co. 717-275-1404 after 6 p.m.

10 3rd calf beef cows. Crossbred bred for early '87 meat price. One young bull, no calving problems. 717-375-2375 Fri.

Square tub, Maytag wringer washer, Kelvinator air conditioner, 6,000 BTU. Lanc. Co. 717-665-2513.

8' aluminum brake, \$550; 4' aluminum brake, \$350; 1 ton platform scale, \$450; 100HP, 3 phase motor, \$800. Northumberland Co. 717-286-5306.

Two door servel gas refrigerator, no guarantee. Best Offer. Lanc. Co. 717-733-0630.

1972, F250 Ford, 390, AT, PS, PB, air, cap; 1978 Olds, 350 SW, AT, PS, PB air; Viking treadle sewing machine; Kirby vacuum cleaner. Berks Co. 215-488-1268.

Wolf seed cleaner #44, \$250; 1974 Ford F100; 1971 Ford F350 parts, springs, doors, hubs, etc. Berks Co. 215-488-1762 or 488-1268.

1967 Ford pickup, good running cond., 351 engine, PB, excel. interior, radio, current inspect., paneled cap, \$800. York Co. 717-292-3294.

1975 Ford F100 pickup, no box, 300 six cyl. 3SP, good cond. Northumberland Co. 717-758-2581.

JD 400 grinder mixer, good condition; AC 435F corn head, like new, picked few acres. Northumberland Co. Eves., 717-286-2345.

Dry broiler manure, \$7/ton. Franklin Co. 717-532-9234.

Brownie #314, 18HP hydraulic pruner, hydraulic saw and pruner, pallet fork and picking bag included. Lanc. Co. 717-653-5661.

One pair 4-5 yr. work horses, matched white face, big. Lloyd H. Kreider, RD 1, Smithville Rd., New Providence, PA.

Ford 501, 7' cut, 3PTH mower, used less than 75 hrs., like new; 1939 JD H tractor, plows, cultivator. Carbon Co. After 9PM, 717-386-5438.

110' Louden litter carrier track trolley with hoist, 1 switch, \$275. Abner S. Glick, RD 1, New Providence, PA 17560. Lanc. Co.

Three barn roof ventilators, like new, \$40 ea. Berks Co. 215-562-7239.

2 combine tires, 18.4x26, no brakes, 10 ply, \$25. each. York Co. 717-235-2032

JD 4440D, 2510D engines, Sebastian 12-36 metal lathe, D-2 track pads, Perkins 3-152 engine, 3 ea. JD 435D tractors. 717-292-4245 evenings.

Amana refrigerator, avacado, \$50.; Glenmoore, Chester Co. 215-942-3163 evenings.

Linde Semen tank, \$225.; Ear Corn, good quality. 215-857-2300

(4) Conde milker units w/DeLaval claws; Sterling pulsators; Silicone inflations, \$175. a piece or would sell parts. Jonas Beiler, R.D.8, Box 15, Danville, Pa. 17821.

Tractor, 1953 Ford Golden Jubilee, excellent cond., \$1895. Also, 5' stock tank, used one season, \$50. 717-993-3385.

Sawed locust posts, fence boards, bale thrower racks & gears. Call kennels, calf hutches. 717-442-8972.

17 HP Bolens diesel tractor w/loader, low hrs., 3-pt. hitch disk, blade & cultivators. 717-442-4279.

Maple trees, 16 to 18' high. Ready to plant. Can deliver, \$75. Lancaster Co., 717-392-8056. Green Acres Garden Center.

Saddle bred buggy horses, sound, well broke. Lanc. Co., 717-354-9639.

50 Gal. apple butter kettle. Ford Crew Cab Truck, AC, AT, dual gas tanks, topper/camping insert. York, 717-266-2982.

Pride of the Farm rotary hog feeder, holds 175 lb. feed, cast iron bottom, good shape, \$50. JP Beiler, RD1, Box 319, Kirkwood, PA 17536.

2 Door kerosene domestic refrigerator, also single door refrigerator for ice block, good cond. Lanc. Co. 215-445-7117

New Zealand white breeder rabbits. 717-665-7212, Lancaster Co.

Iron wash kettle, hay rake, 7 AKC dashound puppies, 3 dapple. 717-354-5039. Lancaster Co

NH 320 Haybaler, NH 256 Hayrake, Cobey silage wagon, Cobey manure spreader, tandem axle, 19' dump bed, 16' flat bed. 717-386-5696.

2 Sawmills and extra shafting, sawblades various sizes, dozer blades, forks, truck tires, and other misc. parts. Monroe, 215-681-4891

Cement block machine, one block machine, may bases. \$200. 201-453-2549.

Reg. Hol. 4 yr old due July 16. Also, heifer due Aug. Abram F Stoltzfus, 130 Locust St., Leola, Lanc Co.

JD 70 diesel, PS, 3-pt. hitch, \$2400. JD Model L, new paint, rebuilt eng. w/cultivator & plow, good cond., \$1400/b.o. 717-626-5678.

New Idea trailer mower, \$450. Also, AKC Boxer puppies. Cumb. Co., 717-532-3640.

30 New Hampshire reds, 10 weeks old, \$1.75 each. Pekin ducks, \$3.75 each. Honey Brook, Chester, 215-273-2642.

Hyster Fork Lift, 2,000 lb. model, very good condition, 4-cyl. Wisconsin air cooled engine, \$1600. York Co., 717-244-2649

Moritz trailer stock horse combination, 12', \$1550. Franklin Co., 717-597-3680.

High moisture shelled corn at farm or delivered. Call for price. Franklin Co. 717-762-5005

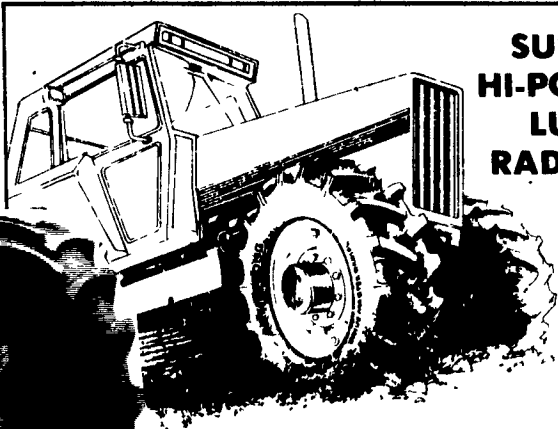
IH No 80 pull type combine, \$800. Dauphin Co., 717-599-5846

Farm: 60A big barn, two streams, priced to sell. Perry Co., PA. 717-536-3130 after 5 p.m D.R. Briner.

ARMSTRONG WE GO THE EXTRA MILE

Over 15,000 TIRES IN STOCK

SPECIAL OFFER On ARMSTRONG RADIAL FARM TIRES

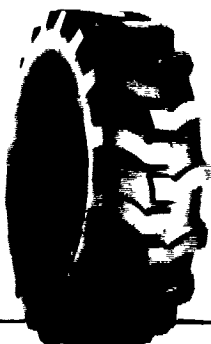


SUPER HI-POWER LUG RADIALS

14 9R28 10 Ply	\$325 00
16 9R28-10 Ply	\$399 00
18 4R34 6 Ply	\$399 00
16R38 6 Ply	\$429 00
18 4R38 6 Ply	\$459 00
18 4R38 8 Ply	\$529 00
18 4R26 10 Ply	\$449 00
20R34 8 Ply	\$639 00
20 8R38 8 Ply	\$649 00
20 8R38 10 Ply	\$699 00

\$5000 CASH REBATE From Armstrong With Purchase Of A Pair Of Super Hi-Power Lug Radials

Loader-Dozer



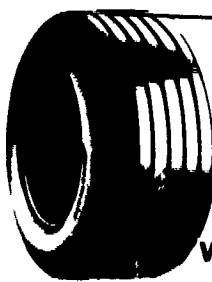
★ TUBELESS ★

16 9x24 8 ply	\$265.00
16 9x24 10 ply	\$330.00
17 5Lx24 6 ply	\$240.00
17 5x24 8 ply	\$270.00
15 5x25 12 ply	\$320.00
17 5x25 12 ply	\$445.00
19 5Lx24 10 Ply	\$359.00
18 5Lx24 12 Ply	\$359.00
21Lx24 12 Ply	\$465.00

★ TUBE TYPE ★

14 9x24 6 ply	\$200.00
14 9x24 8 ply	\$220.00
16 9x24 6 ply	\$220.00
16 9x24 8 ply	\$235.00
16 9x24 10 ply	\$280.00
17 5Lx24 8 ply	\$240.00
16 9x28 8 ply	\$260.00
18 4x28 10 ply	\$340.00
20 5x25 12 ply	Call For Quote
23 5x25 16 ply	
1300x24 10 ply	\$225.00
1300x24 12 ply	\$245.00
1400x24 10 ply	\$255.00
1400x24 12 ply	\$280.00

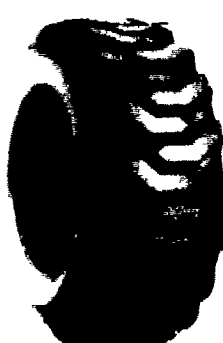
We Have Lots Of **USED TIRES** In Stock!



WAGON TIRES

26 1200x12.4 ply	49 00
8 5Lx14 6 ply	41 00
9 5Lx14 6 ply	44 00
9 5Lx14 8 ply	49 50
11Lx14 6 ply	49 00
9 5Lx15 6 ply	42 00
9 5Lx15 8 ply	44 00
11Lx15 6 ply	43 00
11Lx15 8 ply	47 00
25x7 50x15.4 Ply Tubeless	44 00
25x7 50x15.6 Ply Tubeless	49 00
27x9 50x15.4 Ply Tubeless	53 00
27x9 50x15.6 Ply Tubeless	60 00
27x9 50x15.8 Ply Tubeless	65 00
31x13 50x15.6 Ply Tubeless	88 00
31x13 50x15.8 Ply Tubeless	99 00
11Lx15 8 ply tubeless	50 00
11Lx16 8 ply	58 00
11Lx16 10 ply tubeless	74 00
12 5Lx15 10 ply	75 00
12 5Lx16 14 ply	85 00
14Lx16 1 12 ply	140 00
16 5Lx16 1 10 ply tubeless	160 00

Deduct \$5.00 During July



Skid Loader

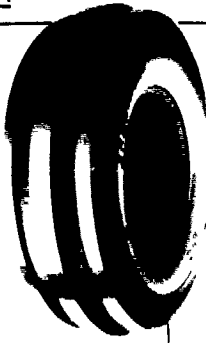
700x15 6 ply	\$65 00
750x15 6 ply	\$68 00
10 16 5 6 ply	\$80 00
17 16 5 8 ply	\$120 00
Steel Shield	
10 16 5 6 ply	\$95 00

Above Tires Shipped To You FREE

Contractor F-3

11Lx15 8 ply	\$80 00
11Lx16 8 ply	\$92 00
11Lx16 10 ply	\$98 00
750 800x16 10 ply	\$80 00
11Lx16 12 ply	\$130 00
145 75 16 1 10 ply	\$225 00

Front Tractor



400 12	\$22 00
400 15	\$24 00
500 15	\$31 00
550 16 4 ply	\$33 00
550 16 6 ply	\$36 00
600 16 4 ply	\$37 00
600 16 6 ply	\$41 00
650 16 6 ply	\$42 00
75L 15 6 ply	\$50 00
750 16 8 ply	\$54 00
750 16 6 ply	\$50 00
750 18 6 ply	\$64 00
9 5L 15 6 ply	\$55 00
9 5L 15 8 ply	\$60 00
1000 16 6 ply	\$80 00
11Lx15 8 ply	\$75 00
1100 16 8 ply	\$110 00
14L 16 1 8 ply	\$160 00

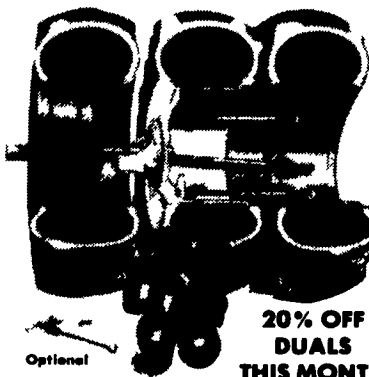
Above Shipped UPS - No Charge



Small Rear Farm

750x20 4 ply	59.95
750x24 4 ply	64.95
8 3x24 4 ply	78.00
9 5x24 4 ply	84.00
11 2x34 4 ply	135.00
11 2x36 4 ply	137.00
12 4x36 4 ply	175.00
13 6x36 4 ply	189.00

the strongest, most reliable and easiest to install...



20% OFF DUALS THIS MONTH

M & W DUAL SUPER LOCK II

Tire	Price	Discount	You Pay	(12.1-16.1)
18 4x30	\$650	\$130	\$520	(12.1-16.1)
18 4x34	\$620	\$130	\$490	(12.1-16.1)
18 4x38	\$630	\$140	\$490	(12.1-16.1)
20 8x38	\$790	\$190	\$600	(16.1-20.1)
20 8x34	\$780	\$170	\$610	(16.1-20.1)

Above Duals Are The Strongest Clamp-On Dual Available Snap-On Also Available
 * 10-Hole Dual Axle Available At 20% Discount Now
 * All Duals Shipped To Your Farm Free During July

Ask About Our 4 Year Guarantee On Rear Tires Strongest In The Country

We Install Tires On Your Farm

- Centre Hall • Williamsport
- Sunbury • Allentown
- North Penna • New Jersey
- Northern Maryland

Route 230 West

MUMMAU TIRE

Serving Farmers In Penna. New Jersey Northern Maryland and Delaware

Out Of State 717-653-1260 In Penna. 1-800-222-1729

Mt. Joy, PA