

**MAILBOX MARKET FOR SALE**

1969 VW, runs great; only 1,000 mis. on rebuilt engine, needs inspected, 1st \$275 takes all. Tape, sunroof. Lanc. Co. 717-529-6744.

Tractor cab will fit Case 70 Series, good condition. Tioga Co. 717-549-2991.

Hesston 2RN corn head; stock or round bale processor, \$2,000. Oliver 70. Union Co. 717-524-2410.

Three pt. hitch log splitter with hoses, cylinder and extra hydraulic cylinder, brand new, never used, \$400. Berks Co. 717-933-5455.

Registered Australian blue heeler pups. Good cattle dogs, watch dogs and catch ground hogs. \$100. Berks Co. 215-562-4161.

440 JD crawler loader, wench, logarch forks. After 6PM, 717-284-2455.

American Standard hot air furnace and duct work; electric 50 gal. water heater; 142 gal. gas water heater. Lanc. Co. 717-548-2466.

12'x20'x13 1/3" wooden utility barn, removable roof. Lanc. Eves. 717-898-8351, daytime 717-665-3686.

Six Caswell farrowing crates, excellent condition, complete waterers, feeders, dividers. Willing trade for livestock or machinery. Cayuga, NY. 315-497-0689.

12 school desks to fasten, formica top, 29" high, nice. Make Offer. Jacob S. Stoltzfus, RD 2, Airville, PA 17302. York Co.

One Reg. Hampshire Ram, 1 yr. old. York Co. After 5, 717-292-2170.

Soybeans, \$5.25 per bu. Ear corn, \$80/ton. Lower Northumberland Co. 717-758-3387.

110 dose rabies vaccine. Don't need due to dairy buyout. \$1/dose. Franklin Co. D.R. Longacre, 20383 Doylestown Rd., Dry Run, PA 17220.

125 IH combine for parts or repair, \$200 or Offer. Dauphin Co. 717-896-3656.

Four Surge strap type pipeline milking units and pulsators. No shells. Good condition. Leb. Co. 717-838-2640.

18 lbs. black sheep wool. Leb. Co. 717-949-2147.

Pygmy goat kids, 8 weeks old, \$50 ea. Lanc. Co. 717-284-3329.

7x16 faltbed wagon on rubber, \$160; pulley fits 8N & 9N Ford, \$65. Sch Co. 717-385-0723.

900 good 5/8 bus. tomato baskets. Call 717-362-9789 after 7PM or write. Stephen B. Stoltzfus, RD1, Box 275, Millersburg, PA 17061.

1968 Int. dump truck, 7x9 bed, 30,000 GVW, new clutch, 345 V8, \$2,500 or Best Offer. Leb. Co. 717-933-4062.

22" Frick thresher, 8' grainbinder. John E. Stoltzfus, RD1, Box 467, Gap, PA 17527. Lanc. Co.

Portable hog shelter holds 70, \$800; 5' 3 pt. rotary mower Ford, very good cond., \$325; Case baler, make offer. 717-367-4359.

Woods RM60, 6' finishing mower, 3 pt. hitch gear drive, like new, \$1,200. Sears deep-well pump w/35 gal. tank. York Co. 717-225-4586.

Cauliflower, broccoli and cabbage plants. 2500 gal. SS milk tank. 717-656-9766.

Antique horse drawn dump cart, excellent condition, \$400. 717-442-9648 after 6PM keep trying.

Three complete 60 lb. Universal milker units, \$165 ea. El K. Glick, RD3, Box 130, Mt. Pleasant Rd., Quarryville, PA 17566.

1976 Ford truck, super cab, long bed, 1/2 ton, good running cond., good tires, power steering, auto. Lanc. Co. 717-284-2292.

200 lb. wheel weights for Ferguson 35, 40 or 50. 717-374-4246 after 6:00.

MF 33 grain drill, 17 disc, good cond., \$1,200. Schuylkill Co. 717-739-4469 eves.

36' NH bale elevator manure fork for NH 425, 445 loader. Wooden sides for NH #8 wagon. Dauphin Co. 717-367-2033.

Economy Power King, 14 HP, loaded tires, wheel weights, chains, snow blade, plow, cultivators, 4' mower. Northampton Co. 215-588-3797.

Day old and older guineas, white crested black polish bantams. Also Netherland dwarf rabbits. Berks Co. 215-582-2587 after 5:30 PM.

Three young Shripshire ram lambs, very good bloodlines, \$50/piece or \$140.00 for all 3. 215-926-4436.

One pr. fly nets for work horses, exc. cond., like new. Will send UPS/COD, \$75. Jonas S. Stoltzfus, Sr., R4, Box 13, Honey Brook, PA 19344.

Three pt. hitch Ford cultivator. 215-942-2668.

Small orchard sprayers w/engine. Elmer S. Stoltzfus, R1, Box 463, Gap, PA 17527. One mile off 340 on Millwood Rd.

Zero clearance fireplace, new cond. Asking \$200; new Harvard water pressure tank w/bladder, \$65. York Co. 717-862-3527.

933 Cat. 11A loader for parts. Wanted: 100' railroad track. Berks Co. 215-683-7922.

Two I beam, 7"x14", 28' long, \$250 each. Lanc. Co. Henry R. Stoltzfus, RD 1, Box 348, Kirkwood, PA 17536.

Horse harnesses, US insignia on blinders, chains; Yamaha GP292 snowmobile; Ford 9N w/new tires, 3 PTH mower. 301-398-7680.

Industrial Lincoln welder, 300 AMP, AC-DC, single phase, 220-440 current, \$450; welding tables, various sizes, \$25-\$100. Carroll Co., MD 301-756-2369.

Complete irrigation system, 2 1/2"x2 1/2" pump, motor, trailer, 1200' pipe, sprinklers, \$1,900 or best offer. York Co. 717-792-2743.

NH 718 forage harvester: Gehl pickup head. Schuylkill Co. 717-425-2562.

#80 McDeering combine, 7' cut w/scour cleaner. Field ready. \$950. Snyder Co. 717-374-9141 eves.

1951 Dodge Meadowbrook, new inspect., good cond., rebuilt motor, rebuilt trans., \$1,000. Snyder Co. 717-743-7263.

1983 Toyota 4x4 pickup, 2" lift kit roll bar, \$6,000. Dauphin Co. 717-469-0394.

Registered gray Arabian mare, 5 yrs. old, very quiet; gray quarter horse, 14-3 hands, 4 yrs. old. Mifflin Co. 717-899-6419.

Jersey family cow, \$350. Bred back. Chester Co. 215-269-0759, before 8:30 AM or after 5:00 PM.

Three round 12 hole hog feeders, 1 ton, \$75; automatic feeders for layers; 10 ton feed bin. Berks Co. 215-286-9285.

Set of steel wheels, 64" high, 12 wide, spring wheels in front. Best offer. 717-776-7692.

Roll away chicken nests, slats, waters, feeders, slates could be used in greenhouses. Stephen M. Stoltzfus, RD1, Box 208, Christiana, PA 17509, on Rosedale Rd.

1971 LT900 Ford Tandem dump truck, 534 eng., 14' steel box, 5+3 trans; nice condition, price, \$10,500. 717-837-0323, Snyder Co.

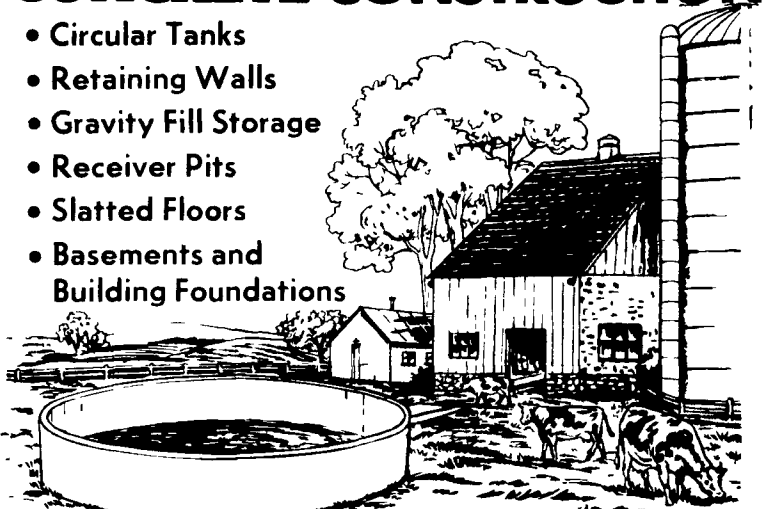
20 Ton refrigerator compressor, 40 hp elect. motor, 7 1/2 hp water circulator. Midd Co., N.J. 201-297-0581.

Gehl s/unloading silage wagon, 8 ton gear, \$1,000. NH 33 flail chopper, \$400. Chester Co., 215-255-4346 or 301-398-7298.

1964 Ford F-800 dump truck, has 391 engine "knocks", hydraulics good, \$850; V6 Jeep Commando, \$350, rusty. Schuylkill Co. 717-345-6184.

**POURED REINFORCED CONCRETE CONSTRUCTION**

- Circular Tanks
- Retaining Walls
- Gravity Fill Storage
- Receiver Pits
- Slatted Floors
- Basements and Building Foundations



**SIZES & LAYOUTS TO YOUR SPECIFICATIONS**

We are qualified to handle any poured concrete job you may need. We use a practical aluminum forming system to create concrete structures of maximum strength and durability. For a highly satisfactory job at an affordable price, get in touch with us

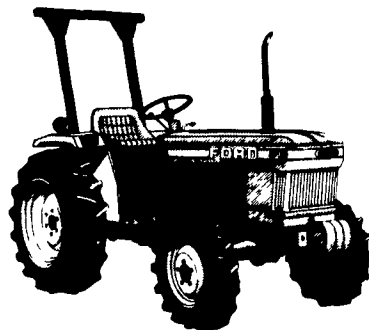
**POURED FOR DURABILITY**

**Groffdale concrete walls, inc.**

BRICK CHURCH RD LEOLA, PA 17540

FOR SALES & LAYOUT CONTACT  
GROFFDALE POURED WALLS (717) 656-2016  
JAKE KING (717) 656-7566

**STOCKY NEW FORDS!**



**TOUGH NEW 1000 SERIES DIESELS UNDER 30 HORSEPOWER**

Whether you want to mow an acre or a hundred, dig a posthole or a sewer trench, grade a driveway, plow a field or load a truck, we've got a Ford 1000 Series tractor for the job. These new compact tractors come with a combination of features you can't get anywhere else. Smooth efficient diesel engines, Standard 10 or 12 speed transmissions, Hydrostatic and Synchro Manual Shuttle transmission options, Standard 540 rpm PTO and Category I three-point hitch, Diff lock, Optional front wheel drive. And a choice of more than 50 matching implements and attachments.



**ALLEN H. MATZ, INC.**

505 E. Main St., New Holland  
Ph: 717-354-2214

SERVING THE COMMUNITY THIRTY-SEVEN YEARS

LANC. CO'S OLDEST FORD DEALER



**BVP (Best Value Protector) "THE LEAD ALTERNATIVE" GASOLINE TREATMENT**

This new additive has been developed for the protection of engines designed to operate on leaded gasoline

Without lead your engine loses power & compression caused by valve seat recession BVP acts as a protective lubricant to prevent direct metal to metal contact that would cause high wear

Use BVP for the protection of lead without the pollution

Available in 8 oz bottles (24 per case), 5 gallon containers & 55 gallon drums

IT COSTS SO LITTLE TO PROTECT SO MUCH!

**DIESEL FUEL INJECTION & TURBO CHARGER SPECIALIST Master Warehouse Distributor**

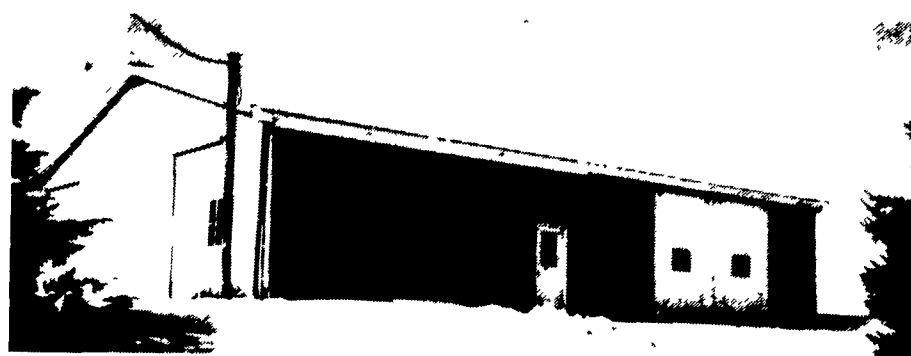
Daily Shipments by UPS, Parcel Post, or our representative who is in area regularly

**MILLER DIESEL INC.**

6030 Jonestown Rd., Harrisburg, Pa 17112  
717-545-5931  
Interstate 81 Exit 26

**POLE BUILDINGS**

by Stoltzfus Builders



**CUSTOM BUILT AGRICULTURAL, RESIDENTIAL AND COMMERCIAL BUILDINGS FOR A VARIETY OF NEEDS:**

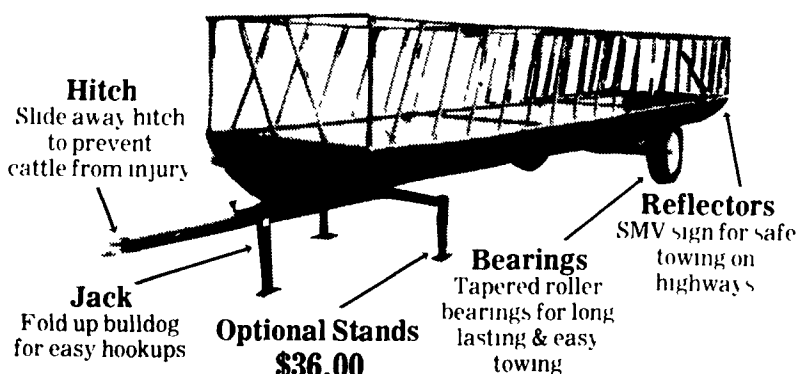
- Painted Galvanized Roof & Siding in a wide range of sizes, designs and colors.
- Weather Resistant Pressure Treated Poles and 2x6's T&G Skirting

**BEN STOLTZFUS**  
(215) 273-3456

**SAM STOLTZFUS**  
(215) 273-3495

Honeybrook, PA

**ALL PURPOSE FEED TRAILER**  
All Metal Construction, Rubber Or Steel Wheels



- 24 Ft...\$695
- 30 Ft...\$825

Dealers  
Write To: **JOHN KING** **SEWARD COLLARD**  
Box 42 Auburn, NY  
Greenpark, PA 17031 (315) 784-5419  
Perry County

**BARTVILLE WELDING SHOP**

R.D. 1, Christiana, PA 17509 (at Bartville)

Call Bob Miller At: 717-687-8217