



Pennsylvania Dairy Herd Improvement Association

# Centre Co. DHIA Report

## CENTRE COUNTY DHIA April, 1986

Graham Bros. Farm	104	87.4	23,420	*863
Valley Wide Farm	84	86.9	21,833	821
Paul Hartle	42	89.0	22,252	783
Fairbrook Farms	99	88.1	20,314	769
Richard Trinca	57	86.9	20,721	766
Joseph Hartle Jr	72	88.2	20,570	754
Franio-Alken Farms	35	89.9	20,736	743
Jay Houser	70	87.2	20,318	743
Evan & Ricky Homan	60	86.9	20,014	727
John Ishler	69	88.3	20,091	721
Bruce Ulmer	63	88.5	20,877	720
Stringers Sand Ridge	67	85.5	18,855	720
Penn State University	124	87.2	19,465	718
Henry Glick	43	87.7	18,630	713
Lynn & Margaret Neer	90	86.0	19,291	709
Ra-EI Holsteins	42	84.4	20,733	704
L Thomas Musser	46	87.6	19,096	702
James Rider	93	86.6	18,763	691
Fred Benner	120	89.0	18,389	685
Carl Gates	42	85.9	18,536	682
Donald Bierly	70	87.2	18,222	682
Ned Deitrich	69	87.9	19,063	679
Tussey View Farms, Inc	117	83.7	16,349	674
Mingo Meadow Farms	70	83.4	19,260	672
Thomas Ault	60	90.2	18,833	663
Rodney Reese	108	86.2	18,252	662

Steve Lansberry	42	85.3	19,421	660
Fred Burris	26	84.1	17,527	657
Jesse & Mary Burkholder	39	87.9	18,717	654
Tim & Gloria Rogers	59	88.6	17,608	652
Barry Kerstetter	73	87.5	19,057	651
Reesebrook Farms	108	86.5	17,606	651
L & R Hough	50	87.0	18,688	650

\* - 3 times a day milking

During the month there were 108 herds with 5,902 cows processed in the D H I A program, according to Alan P Kozak, County Agent. Production ranged from a high of 68 5 pounds of milk, testing 4.0 percent fat, to a low of 23 2 pounds of milk, testing 4 8 percent fat

In the owner-sampler program there were 18 herds with 656 cows being processed. The herds ranged from a high of 53.0 pounds of milk, testing 3.5 percent fat, to a low of 23 1 pounds of milk, testing 3.6 percent fat

The ten high individual cow actual production records in D H I A produced on a two times a day milking in 305 days or less (unless otherwise indicated) were in the following herds

Graham Bros Farm	24,429	4.4	1063
Fairbrook Farms	30,336	3.4	1019
Penn State University, Herd 185	24,239	4.1	1000
Valley Wide Farm	26,082	3.8	990
Fairbrook Farms	21,872	4.3	939
Valley Wide Farm	24,038	3.8	904
Barry Kerstetter	21,797	4.1	904
Fred Benner	24,583	3.7	900
L Thomas Musser	22,009	4.1	899
Mingo Meadow Farms	26,799	3.3	885
Tussey View Farms Inc	22,502	3.9	885

## CLINTON COUNTY DHIA April, 1986

LOCK HAVEN — Paul L Courter, RD#2, Mill Hall led the Clinton County Dairy Herd Improvement Association for April, 1986

The top herd in the Clinton County DHIA for April is owned by Paul L Courter, RD#2, Mill Hall, while the cow completing the highest lactation was owned by Richard L Schenck, RD#2, Box 500, Mill Hall

The top herd of Registered Holsteins completed the month with a Rolling Herd Average of 18,738 pounds of milk per cow, yielding 692 pounds of butterfat

Other top herds were

— Richard L. Schenck, RD#2, Mill Hall: 18,459 lbs milk, 660 lbs fat

— Anthony & Caroline Graine, RD#1, Mill Hall, 19,422 pounds of milk, 652 pounds of butterfat

The cow completing the highest lactation of 305 days or less was Lilac, a 3-04-year-old registered holstein owned by Richard L Schenck, RD#2, Mill Hall. Lilac produced 21,620 pounds of milk testing at 4.0 percent, yielding 855 pounds of butterfat in 305 days

Other top producing cows were

— #6, owned by Paul Dotterer, RD#2, Mill Hall, 20,611 pounds of milk, 3.9 percent, 806 pounds of butterfat

— Jan, owned by Paul L Courter, RD#2, Mill Hall, 18,118 pounds of milk, 4.3 percent, 788 pounds of butterfat

— M Kay, owned by A Ronald Martin, RD#1, Mill Hall, 15,147 pounds of milk, 5.2 percent, 781 pounds of butterfat

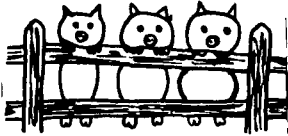
— Best, owned by Terry & Deb Dickey, McElhattan, 19,220 pounds of milk, 4.0 percent, 775 pounds of butterfat

## SOYBEAN ROASTING ON YOUR FARM

Don't Waste It - Roast It!

This Little Piggy Went To Market,  
This Little Piggy Stayed Home,  
This Little Piggy Had...

### ROASTED SOYBEANS



Make Higher Profits From All Grains.  
Roasting Improves TDN, Destroys Mold,  
Retards Toxins & Removes Moisture.

### CUSTOM GRAIN ROASTING DONE IN PA. & SURROUNDING STATES

#### DALE L. SCHNUPP

RD 6, Lebanon, Pa. 17042

PH: 717-865-6611

#### DAVID N. GROFF

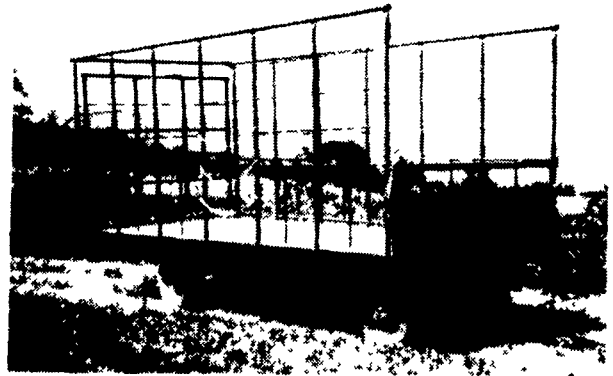
RD 1 Box 506C

Lewisburg, Pa. 17837

717-966-3593

ALLEN SUMMERS  
703 E. Christine Rd.  
Nottingham, Pa. 19362  
215-932-4761

## BEST BUY of the YEAR



- 6" Steel Main Beam
- 2" Vertical Tubing Drilled so that the 1" Horizontal tubing extends Full Length of Wagon
- Front-Side and Rear Loading and Unloading
- 2x8 Pressure Treated Lumber Floor
- 2x6 Oak Cross Beams
- Beds are 8' wide, available in 16, 18 or 21' lengths. Racks are 90" high.
- NEW FEATURE: 6" Channel across back for pushing wagon without damaging bed.

### FOR FURTHER INFORMATION, CALL YOUR LOCAL DEALER:

LOST CREEK  
IMPLEMENT  
Oakland Mill, PA  
717-463-2161

MELROSE FARM  
SERVICE  
Greencastle, PA  
717-597-3138

KELLER BROS.  
Lebanon, PA  
717-949-6501

DUNKLE & GREIB  
Mill Hall, PA  
717-726-3115

WALTER G. COALE, INC.  
Churchville, MD  
301-734-7722

TOBIAS EQUIPMENT CO., INC.  
Halifax, PA  
717-362-3132

NORTHEAST  
DISTRIBUTING  
West Clifford, Pa.  
717-222-9020

VALLEY IMPLEMENT  
SALES  
Harrisonburg, VA  
703-434-9961

CHAMBERSBURG FARM  
SUPPLY  
Chambersburg, PA  
717-264-3533

OXFORD GREENLINE,  
INC.  
Oxford, PA  
215-932-2753

PAUL SHOVER'S, INC.  
Loysville, PA  
717-789-3117

A.B.C. GROFF  
New Holland, PA  
717-354-4731

CARLISLE FARM  
SERVICE  
Carlisle, PA  
77-243-4419

CLARK'S FARM SUPPLY  
Williamsport, PA  
717-494-0060



## The World's No. 1 Mistblower

Misting Saves You Time And Money

### Advantages

1. Use Less Chemical
2. Use 1/10 Amount of Water
3. Ideal Foliage Penetration
4. Low Cost Of Units
5. Low Maintenance

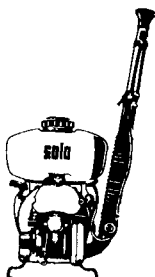
### Ideal Spraying For:

- Produce
- Orchards
- Nurseries
- Wheat, Hay
- Fly Control

We have a mistblower to suit your needs from the backpacks to the large 3 pt. PTO sprayers. Most models in stock. Call or write for more information.

List \$334.95

Model 419/32/3 pt.  
List \$1,549.95



### Parts - Sales - Service MARTIN'S REPAIR SHOP

R.D. #4 Ephrata, Pa.  
Ph. 717-733-3015



'298.00

'1,459.95

Manufactured By

## CLW MANUFACTURING, INC.

R.D. #2, Box 8  
Newburg, Pa. 17240  
717-423-6794