

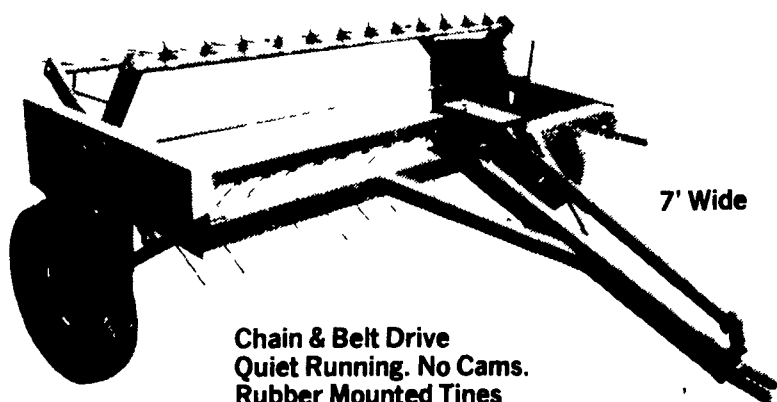
**FARM EQUIPMENT**

**KUHN KUHN PRODUCTS**  
**SPECIAL DEMO EQUIP. SALE**

	List	Demo Special
GA 300 GM Rake 10'6"	\$2,100	<b>*1,650</b>
GMD 66 7'10" Disk Mower	\$4,500	<b>*3,475</b>
GF 22NT 10'2" Pull Type Tedder	\$1,815	<b>*1,400</b>
FC 200 6'7- Disk Mower-Conditioner	\$6,260	<b>*4,975</b>
FC 300 10 Ft. Disk Mower-Conditioner	\$12,605	<b>*10,400</b>

**BIGGS INCORPORATED**  
34 Buckley Ave.  
Rising Sun, Md.  
301-658-5531

**ZIMMERMAN INC. P.T.O. HAY TEDDER**



Chain & Belt Drive  
Quiet Running. No Cams.  
Rubber Mounted Tines

7' Wide

List Price.... \$1,544

**PRE-SEASON CASH PRICE..... \$1,295**

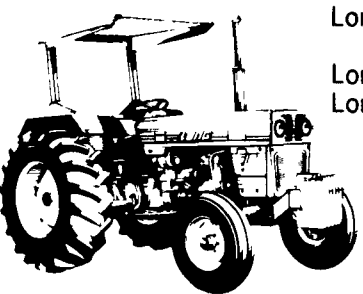
**ZIMMERMAN'S FARM SERVICE**  
Bethel, PA  
(717) 933-4114

**LEBANON VALLEY IMPLEMENT CO., INC.**  
Richland, PA  
(717) 866-7518

**Stretch Your \$'s The Long Way With FORRESTER FARMS**



Long 310 28 H P \$ 6500  
Long 310 DT 28 H P \$ 8500  
w/1549 loader \$10,500



Long 610C 64 H.P. (Orchard Model) \$8400  
Long 1199B 3 pt Backhoe \$4200  
Long Box Scraper \$ 795  
w/hydraulic attachment

All At: Forrester Farms  
PH: (717)263-0705  
1/4 Mile East of Exit 6  
I-81 on U.S. 30

**Hot Deals On Mitsubishi In June**

out these prices

MT 160 4WD	\$5600
MT 180 4WD	\$5900
MT 180 4WD Hydrostatic w/54" Mowerdeck	\$7200
MT 372 w/48" Mower Deck	\$4500
MT 210 4WD, PS, Live PTO w/K95 Loader	\$8250

These great deals won't last long so call or stop by:

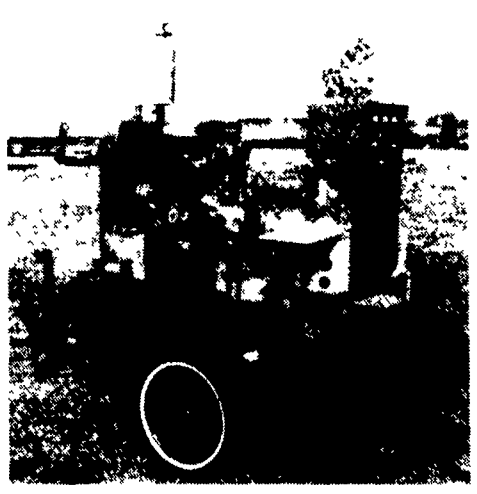
**MITSUBISHI BUILT BY THE PROS**  
**Forrester Farms**  
1337 Lincoln Way East  
Chambersburg, PA 17201  
PH: (717) 263-0705  
HOURS: Mon.-Fri. 8:30-5:00; Sat. 8:30-12:30

Authorized Isuzu Dealer:

Parts - Sales - Service

**MARTIN ELECTRIC PLANTS**

Pleasant Valley Rd. Ephrata, PA 17522 (717) 733-7968



**Contractors - Builders Etc.**

**ISUZU DIESEL PORTABLE or STATIONARY GENERATOR SETS**

**ISUZU DIESEL. THE EFFICIENCY EXPERT**



Dismantling Combines for parts over 400 all makes and models Call before you come.

All Combines Sold—free parts for one season if in our parts lot.

IH: 915, 815, 315, 205, 203, 503, 403, 303, 93, 91, 151, 101, 141, 127, 125, 82, 76, 74. JD: 6600, 4400, 105, 95, 55, 45, 40, 30, 25, 12A. MF: 510, 410, 300, 35, 92, 82, 72, 90, 80, 70, 60, 27, 26. AC: Gleaner, L, M, K, G, E, C, C2, A, 60, 66. Oliver: 545, 535, 430, 40, 35, 33, pull type. NI: Uni, 705, 702, 701, Combine shellers & harvesters. Ford: 622, 630, pull type. Case: 960, 660, 600. NH: 975, 985. NM: 5297, MM Uni, White 8600, Massey 750D, Straw Spreaders & Choppers.

**COMBINES**

IH 203 w/10' head  
MF 35 w/8' grain head  
Case 600 w/10' grain  
MF 410 w/grain & 4R 30" corn  
JD 6600 diesel, hydro, rotary screen  
JD 6600 diesel, gear drive  
JD 7700 diesel, hydro w/rigid grain head, \$7,950.  
JD 4400 diesel w/rigid grain head, \$7,500.  
JD 55 w/2R & grain, \$2850  
JD 45, late model w/3300 quick tach throat & grain, 2R corn, \$5850.  
(2) JD 45 squareback w/10' grain & 2R corn, \$3875  
2 JD 45 roundback w/10' grain & 2R corn, \$2250  
For JD 4400, 6600 & 7700 combines, we have 3 JD flex heads & rigid heads, 4R wide, 4R narrow, & 6R narrow, prices depend on heads, you pick.  
IH 915 diesel, turbo, hydro w/grain & 4 or 6R head.  
IH 715 duals, 4R & grain.  
IH 403 hydro w/4R 30" & grain, \$5500  
2 IH 105 w/10' & 2R corn, \$2500.  
IH 93 w/10' grain, \$2,000  
IH 205, 10' flex & 2R, \$3,000.  
IH 80 pull types, auger feed **SOLD** & bin, from \$900 to \$1600.  
MF 510 diesel quick tach w/grain, \$5500.  
MF 300 quick tach w/grain & 2R corn, \$3875  
We have 4R 30" & 4R 38" corn heads for MF 510 & 410.

**TRACTORS**

Gleaner M diesel w/grain, 4R, 38" & 4R 30" corn, \$11,500.  
2 Gleaner C2's w/grain & 4R **SOLD** from \$3500 to \$4500.  
Gleaner E3, grain & 2R, new motor, \$5500.  
Case 660, cab, grain, 2R or 3R 30"  
Case 600 w/cab & 10' grain head  
Farmall M w/WF \$1100  
IH 404 **SOLD**, w/3 pt.  
IH 706 dsl., good shape.  
IH 340 w/PS, fast hitch  
IH 1066 Dsl., cab, dual PTO, 3760 hrs. w/complete motor overhaul, rebuilt injector pump, new oil pump, will show bills, \$9500.  
Farmall Super M w/WF  
IH 1206 Diesel, WF & big rubber, \$4950  
Farmall C, real nice, \$950  
Ford 3000 Diesel, \$4000  
Farmall Super C w/hyd. & pulley \$975  
Massey 1080 D, \$5200  
IH 340 w/fast hitch  
Ford 6000 Diesel \$2475  
Massey Pony Pacer w/1R cult. & 1 btm. plow \$1250  
Ferg. 30 w/3 pt.  
Farmall 560 Diesel \$2850  
Ford 900, P/S, real clean  
AC D17 Diesel snap coupler  
IH B504 High Crop Mohn **SOLD** w/PS

**ROTARY MOWERS**

3 pt. 6.7 & 8' Also pull types.  
**WIDE FRONT ENDS**  
Farmall H & M  
IH 340  
Massey 101, 30 & 33  
AC D17  
WD 45  
WD  
AC C or CA  
Farmall C or Super C, 200 & 230  
Ford 6000 WFE

**CORN PICKERS**

182 Rows Pull Type & mounted. Also, 50 for parts

**FORAGE HARVESTERS**

IH 830 w/2R 30" corn  
IH #8 flail chopper  
IH 720 w/2R, 30" & p.u. head, used 3 yrs., always kept in A-1 cond.  
AC 720 2RN & pickup \$750  
JD 34 1R & pickup \$875

**SPREADERS**

Case Ground drive, \$350  
IH 225 bushel, PTO, \$500

**TRACTORS ALL WITH LOADERS**

IH TD14 Crawler Loader, exc. undercarriage, \$3850  
Farmall Super C \$1,675.  
JD 450 Crawler loader, \$8,950.  
Farmall M w/PS \$1,850.  
Farmall 200 w/fast hitch & live pump, \$2,000.

**GRAIN HEADS**

8, 10, 11, 12, 13, 14 & 15' **CORN HEADS**  
2, 3, 4, and 6 Rows **HAYBINES & RAKES**  
JD 1209 9', \$2,450  
NI Rotobar Rake, \$850  
3 JD Rotobar Rakes, \$450 to \$675.  
Gehl 9', \$875  
Hesston 9' self-propelled, \$2200  
IH Wheel Rake, \$625  
JD Rake  
NH 56 **SOLD** \$950  
NH 489 \$3500  
NH 474, 7', \$3750  
NH 256 Rake, \$1250  
Hesston 10' Hydro-swing, center pivot hitch, \$2850.  
NI Cut **SOLD**, 7', \$975  
IH Rake w/front dolly wheel, \$785.  
NH 477, 7', \$2150

**PLOWS**

(15) From 2-7 Bottom **MISC.**  
Badger 3 btr forage wagon w/roof  
IH fast hitch balanced head mower  
Pull type road grader  
Sickle bar mowers, 3 pt. semi & trailer types.  
Hay Balers, with or without throwers, \$300 & up.  
NI 12' Flail Stalk Cutter, \$800.  
IH Loaders to fit C, Super C, 200, 230, H, M, 300, 350 & 300 & 350 utilities  
Ferg. loader w/hyd. bucket & front pump \$650  
12 Tooth Trailer type chisel plow

New 3 Pt. Equipment

**DISMANTLING TRACTORS FOR PARTS**  
Harvesters and Corn Heads for Parts

IH 1256, 666 Hydro, 806, 660, 656, 560, 504, 404, 460, 450, 400, 350, 300, 340, 240, 230, 200, MTA, M, H, C, BN, A, Cub, F30, F20, F14, F12. JD: 4010, 3010, 2010, 720 D, 70, 60, 50, A, B. AC: 180, D17, WD, WC, CA, C, B. MF: 1155, 90, 85, 444, 333, 44, 33, 30, 20. Case: 400, 300, DC, SC, VAC Ford: 6000, 4000D, 860, 800, 8N, 9N. Oliver: 1800, 88, 77, 70, 60 Crawler D2 Cat & Oliver.

**KEITER'S FARM MACHINERY**

R.D. 1, Halifax, PA 17032 Rt. 225  
20 mi. north of Hbg.  
Phone: 717-362-9574

Dismantling 50 pickers for parts **POSITIVELY NO OUT OF STATE PERSONAL CHECKS**