

THE OLD FARMER'S ALMANAC

JUNE 23-29, 1986

Warm enough to croon and spoon.

The year is half gone this week Battle of the Little Bighorn fought in Montana, June 25, 1876 Average length of days for the week, 15 hours, 16 minutes Treaty of Versailles signed June 28, 1919, officially ending World War I Last quarter of the moon June 28 (Sat) See much, say little, and learn to suffer in time



Ask the Old Farmer: I would like to know the best and easiest way to take up linoleum that has been cemented to a hardwood floor RAS, Dedham, Mass

Grab one corner and pull It's a help if a neighbor has dropped in about that time The glue, etc., that is left on the floor can be sanded off and the floor refinished

Home Hints: Plant nasturtiums around squash hills In addition to having edible leaves and flowers, they control squash bugs

OLD FARMER'S WEATHER FORECAST

New England: Beginning of week hot with showers, mid through end of week sunny and hot

Greater New York-New Jersey: Week begins with thundershowers and mild temperatures, mid through end of week sunny and hot

Middle Atlantic Coastal: Through midweek sunny and hot, end of week showers

(All Rights Reserved, Yankee Publishing Incorporated, Dublin, NH 03444)

Leola Produce Auction

Leola, PA

Tuesday, June 17, 1986

Report Supplied by Auction

Asparagus: 1.10-1.30 bunch.

Broccoli: 4.50-6.50 bu.

Cabbage: 4.00-6.00 bu.

Cauliflower: .55-.76 hd.

Lettuce: 3.00-5.25 bu.

Onions: 3.50-5.75 bu.

Peas (Hull) 7.50-10.00 bu.

Raspberries: 12.00-14.00 (12 pt. flat); 12.00-16.50 (8 qt. flat).

Red Beets: 4.00-6.50 bu.

Strawberries: 12.25-15.00 (8 qt. flat).

String Beans: (Green) 12.00-14.00 bu.

Sugar Peas: 14.00-17.00 1/2 bu.

Sugar Snaps: 12.00-14.50 1/2 bu.

Tomatoes: 10.00-14.00 (20# box).

Yellow Squash: 4.00-7.50 1/2 bu.

Zucchini: 3.00-6.00 1/2 bu.

CRIPPLED AND DISABLED

Cows, Steers & Bulls For Slaughter Under

USDA Inspection

Call Wayne Taylor

717-866-6289

215-286-9400

Lebanon, Berks, Lancaster & Chester Counties

Salute to the Dairy Industry

TOP PRICES FOR DOWN, CRIPPLED AND AS IS COWS, BULLS & STEERS

Slaughtered Under Federal Inspection Paid On Dressed Weight

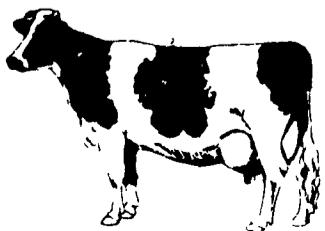
Tom Mulvaney Livestock Trucking (201) 454-4247

HANDLING:

Warren, Hunterdon, Sussex And Somerset Counties, New Jersey

IN PENNA:

Northampton, Bucks, Lehigh And Parts Of Carbon & Schuylkill Counties



Shippensburg Produce Auction

(Leinbach's)

Shippensburg, PA

Tuesday, June 12 & 17, 1986

Report Supplied by Auction

Cauliflower .03-.45 hd.

Cherries (Bing) 10.00-10.85 (8 qt. flat).

Cucumbers 2.00-3.85 1/2 bu.

Eggs .61-.65 doz.

Lettuce (Spring) 1.75-3.00 1/2 bu.

Onions (Spring) 1.50-5.30 1/2 bu.

Peas (hull) 8.50-11.00 bu.

Pickles 4.85 1/2 bu.

Potatoes (50#) 2.00-2.60.

Raspberries (12 pt. flat) 12.00-14.00.

Red Beets 2.00-4.50 bu.

Sugar Peas 8.50-9.00 1/2 bu.

Zucchini 1.50-4.00 1/2 bu.

Zucchini Squash 1.50-4.00 1/2 bu.

Shenandoah Valley Livestock

Harrisonburg, Va.

Saturday, June 14

Report supplied by auction

FEEDER CATTLE: 1.00-2.00 lower.

STEERS: M&L-1 300-500 lbs.

59.00-65.25; 500-700 lbs. 55.00-58.50;

700-1000 lbs. 47.00-53.00; Holstein

300-1000 33.50-41.00. S-L&M&L-2

300-500 lbs. 54.00-61.00; 500-700 lbs.

51.00-54.00.

FEEDER BULLS: M&L-1 500-700 lbs. 51.50-54.00.

HEIFERS: Steady. M&L-1 300-

500 lbs. 48.50-54.00; 500-700 lbs.

45.50-50.00. S-L&M&L-2 300-500 lbs.

46.00-48.50.

STOCK COWS: Beef 435.00-

465.00; Baby Calves 31.00-100.00

(Few 100.00 to 127.50).

SLAUGHTER CATTLE: 1 hd.

Steers-Good 2-3 51.50.

SLAUGHTER COWS: 1 1/2

Lower. Utility & Commercial 2-4

35.25-38.75 1 at 40.00; Canner &

Cutters 1-3 30.00-35.25.

SLAUGHTER BULLS: 1&2

42.50-47.00.

LAMBS: Trend 5.00 Lower. Blue

O High Choice & Prime 78.00; Red

O Choice 64.00; Feeder Lambs

Choice 70.50-72.00; Slaughter Ewes

18.00-23.00.

HOGS: US 1-3 200-240 lbs. 48.50;

Sows 1-3 37.00-43.50; Boars 27.00.

SLAUGHTER CALVES: Good &

Choice 57.00-64.00.

New Holland Sales Stables

New Holland Dairy

Wednesday, June 18, 1986

Report supplied by auction

Reported receipts of 71 cows, 95

heifers and 9 bulls. Market steady.

Load of Luzerne Co. springers,

730.00-850.00.

Load of PA fresh cows, 560.00-

1035.00.

Load of NY fresh cows, 700.00-

1010.00.

Load of PA fresh cows, 740.00-

780.00.

Load of Canada fresh cows,

570.00-1150.00, springers 730.00-

990.00.

Load of PA fresh cows, 850.00-

1040.00.

Locally consigned cows 360.00-

1100.00.

Springing heifers 640.00-890.00.

Open heifers 290.00-450.00.

Bulls 360.00-600.00.

LOW CLASSIFIED RATES WITH EXCELLENT RESULTS!

Custom Liquid Manure Hauling 3000 Gal. Tank Truck Lancaster & York Counties

Don Groff Holtwood, Pa 717/284-2580



I'M NOT LION...

The Classified Livestock Section Has Bestly Selections!

York County Livestock Sales Ltd.

P.O. BOX 243 • FAWN GROVE, PA 17321

(717) 993-2564

Saturday's Hay Sale Canceled Until Further Notice

York County's Only Livestock Auction

On PA Route #24 between Stewartstown and New Park

All Kinds of Livestock Sold on Commission

GWALTNEY OF SMITHFIELD

Open Every Monday - Hogs - 6:00 a.m. - 12 noon

Auction - 7:00 p.m. - 7

Buyers - Livestock Producers - Farmers

We Need & Appreciate Your Patronage

Stan & Mary Nagle - Owners

Home Phone: (215) 566-3239

LOUIS LYONS & SON

Consign your cattle and hogs, feeder pigs & calves to Louis Lyons & Son. They offer choice service, excellent sorting & marketing of your livestock.

Charles Diller, Manager

Phone 717-394-7915

Burnell Siegrist - Buyer & Seller

Phone 717-626-8653

Experienced Personnel

Immediate Weighing



ATTENTION FARMERS

EVERY MONDAY HATFIELD PACKING CO. and MOYER PACKING CO.

Will Receive Your Hogs and Cattle at the DANVILLE LIVESTOCK MARKET

RD 4, Danville, PA

- We will receive your hogs from 8 AM to 12 Noon every Monday. Your hogs will be weighed and paid for immediately.
- We will also accept your sows & boars.
- Your cattle will be received from 12:30 to 5 P.M. We will either pay you for your cattle immediately or you may sell them dressed weight.
- There will not be a commission or yardage fee deducted from your check.
- You may call our office Monday morning and we will be able to tell you the base price for hogs for the day.

MELVIN M. LEHMAN - Owner Danville Buying Station

Phone: 717-275-2880

48% Soybean Meal, \$209.00

Distillers Grains, \$158.00

Per Ton — Delivered EVEN LOWER PRICES FOR LARGER QUANTITIES.

Buy up to 11 tons and save more! No extra charge to blend these ingredients

NOTE: We can sell for less because we sell only to people who pay promptly

WALKER COMPANY

Gap, PA 17527

717-442-4169 (Collect)

FRIDAY, JULY 4 ON THE FARM MONTHLY BRED GILT SALE

Sale to Start Promptly Every 4 Weeks at 7:30 P.M.

Located 18 miles south of Lancaster, Pa., 6 miles south of Quarryville, take Rt. 272 to Little Britain, turn north, follow Little Britain Road to Jackson Road, right. 2nd farm, OR take Rt. 222, out of Quarryville to Cedar Hill Road to Little Britain Road to Jackson Road, left. Watch for sale arrows.

25 Head Due Between July 6-13

25 Head Due Between July 13-27

50 to 60 Head WHITE DIAMOND GILTS Here Now a new cross again. Large White & Landrace, first generation true F-1 gilts. Parent stock originated from Lieske Bros. Minnesota. Very productive in litter size and feed conversion.

Vaccinated for Lepto, Erysipias, Rhinitis, E'Coll, Pasteueralla

Hand mated with Breeding Dates

Local Trucker Available No Hogs Sold On Commission

JOHN B. STOLTZFUS R.D. 1, Kirkwood, Pa

Abe Diffenbach, Auctioneer AU225L

NEXT SALE DATE AUGUST 1