

Dewart Hay
Dewart, PA
Monday, June 16
Report Supplied by Auction
8 loads Hay, 40.00-55.00; Straw, 1
load, 51.00; Corn, 65.00 and 66.00.

King's Hay
Kirkwood, Pa.
Tuesday, June 17, 1986
Report supplied by auction
20 loads.
Alfalfa, 54.00-102.00; Alfalfa Mix,
47.00-78.00; Mixed Hay, 65.00-68.00;
Timothy Mix, 60.00.
6 loads Straw, 55.00-80.00.

Carroll Co. Hay
Westminster, Md.
Tuesday, June 17, 1986
Report supplied by auction
8 loads.
Alfalfa (new) 90.00-92.00; (old)
70.00; Timothy (new) 1.10 bale;
Timothy and Clover Mix, .68-.70
bale; Straw (Mixed Barley and
Oats) .70 bale.

Farmers' Auction Hay
Duncansville, PA
Monday, June 16, 1986
Report supplied by auction
8 loads Hay, 41.00-53.00; Straw, 2
loads, 40.00-44.50.

New Holland Hay
Monday, June 16, 1986
New Holland Sales Stables
New Holland, PA
Report Supplied by Auction
87 loads. Prices steady with last
week.
Alfalfa, 3 loads, 110.00-131.00, 7 at
70.00-96.00, 5 at 55.00-70.00; Alfalfa
& Timothy Mix, 2 at 110.00-125.00;
Clover & Timothy Mix, 6 loads at
70.00-86.00, 9 at 50.00-70.00, 1 at
47.00.
Timothy, 5 at 90.00-103.00, 6 at
70.00-90.00; 1 at 56.00; Mixed
Grass, 60.00-84.00; Straw, 7 at
80.00-89.00, 5 at 70.00-80.00, 4 off
color, 45.00-68.00.

Corn Husks, 57.00; Oats, 3 at 1.25-
1.55 bu.

Carlisle Livestock
Carlisle, Pa.
Tuesday, June 17, 1986
Report Supplied by Auction
CATTLE: Steers: Good 48.00-
52.25; Medium 47.00-Down.
Heifers: mostly Holsteins offered;
Good 43.75-45.75; Medium 38.25-
42.00. Cows: mostly Steady -
Earlybird Pen 2.00 higher. High
Yield none offered; Good 37.50-
39.85; Medium 35.00-37.25; Big
Middle 33.00-37.00; Shelly 32.00-
Down. FAT Bulls: 1.00 higher;
Good 47.25-49.60; Medium 45.25-
46.50.

FEEDER CATTLE: Steers (300-
650 lb.) Good 54.00-60.50. Heifers
(all weights) Good 46.00-50.00;
Medium 44.00-45.00. Bulls (all
weights) Choice 52.00-62.00; Good
44.00-51.00; Medium 39.00-43.50.

VEAL CALVES: Choice 85.00-
102.00; Good 70.00-84.00; Medium

60.00-69.00; Light/Standard 50.00-
59.00; Farm Bulls 85.00-119.00;
Farm Heifers 60.00-75.00;
Light/Weak 49.00-Down.

HOGS: Barrows & Gilts (742 hd.)
Strong Demand 3.00 higher. (US
No. 1-3) 210-250 lbs. 52.75-54.35; (US
No. 1-3) over 260 lb. 51.00-52.75;
(US No. 2&3) 210-250 lbs. 51.75-
52.50; (US No. 2&4) (all weights)
35.00-41.50.

SOWS: Strong Demand! (1.00
higher on heavier sows). Over 450
lb. 36.50-41.25; under 450 lb. 34.25-
37.75; 2&3's 29.00-34.00; Boars:
32.50-38.50.

FEEDER PIGS (by the hd) (15-
25 lbs. 13.00-19.00); (30-40 lbs. 24.00-
34.00); (40-50 lbs. 36.00-40.00); (55-
75 lbs. 46.00-51.00 hd.).

Lambs: Choice 69.00-75.00; Good
61.00-68.00.

EWES: 18.00-40.00 lb.
Goats: (Lg) 35.00-45.00; (hd)
Sm./Med. 16.00-32.00.

Sale every Tues. evening:
Livestock 7:00 p.m. Eggs, Poultry
& Rabbits 5:30 p.m.

Jersey Shore Livestock Market, Inc.
Auction every Thursday
June 19, 1986
Jersey Shore, Pa.
Report supplied by Auction
Return to Farm Calves 65.00-
120.00.
Good Veal 70.00-100.00.
Common Veal 35.00-69.00.
Choice Steers 53.00-56.00.
Good Steers 51.00-52.50.
Common Steers 42.00-50.00.
Commercial Cows 35.00-41.00.
Canners-Cutters 34.00-38.00.
Shells 28.00-33.00.
Choice Heifers 50.00-52.00.
Good Heifers 47.00-51.00.
Common Heifers 38.00-46.00.
Good Feeders 58.00-74.00.
Common Feeders 33.00-57.00.
Bulls 40.00-50.00.
Good Hogs 55.00-56.00.
Heavies 42.00-51.00.
Sows 38.00-41.00.
Roughs 33.00-36.00.
Eggs \$.48-\$.73/doz.

Green Dragon Livestock Sales

Location: Ephrata RD 4. 1
mile N. on North State St.,
Ephrata.

COWS COWS COWS SALE EVERY FRIDAY

Lots of good Northern Feeder
& Stockers. Slaughter Cows
- Bull Steer, Veal-lamb

11:00 A.M.-Beef Sale 200-300 each week.
1:00 P.M.-Dairy Sale.
7:00 P.M.-Small Animal Sale.

For Special Sales and Herd Dispersals
on farm or at our barn or other market
information call: Office 717-733-2444,
Home 717-838-4318.

WALTER H. RISSER, Proprietor

All out of state and new buyers must have
cash or certified check or current letter of
credit from bank.

ATTENTION FARMERS

The New Way To Market Your Livestock

HATFIELD PACKING CO. AND MOYER PACKING CO.
Will Receive Hogs Will Receive Cattle

At The

**BLAIR-BEDFORD
BUYING STATION**
RD 1 Martinsburg, Pa.

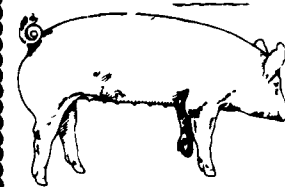
MONDAYS - Hogs 8 AM to 11:30 AM
Cattle & Calves 8 AM to 3 PM

THURSDAYS - Cattle & Calves
8 AM to 3 PM

- No commission or yardage fees
deducted from check
- Livestock weighed and paid for
immediately
- You may call our office sale day for
prices

DALE R. HOOVER - Owner

Business 814-793-3077
Residence 814-793-2657



**EMERY'S
BUYING
STATION**

**OPEN TO RECEIVE
YOUR MARKET HOGS**

**AT THE GREEN DRAGON MARKET
RD 4, EPHRATA, PA 17522
1 MILE NORTH OF EPHRATA
ON NORTH STATE STREET.**

**HOURS: MONDAY, TUESDAY, and
WEDNESDAY 6:00 A.M. to 11:30 A.M.**
215-458-5677 Residence
717-733-9648 Office

**YOU ARE PAID FOR YOUR
HOGS IMMEDIATELY**

Ken & Lois Emery, Proprietors

HAY & STRAW SALE

12:00 Noon
Every Wednesday
Westend of Avondale
at the intersection of
Baltimore Pike and
Route 41.

Harvey Z. Martin
215-268-3604
(Office)
215-445-5303
(Residence)

KING'S AUCTION KIRKWOOD Hay, Straw and Grain Auction EVERY TUESDAY

12:00
Located Rt. 472 5 miles south
of Quarryville or 6 miles north of
Oxford at Shaub's Auction
House

Lloyd H. Kreider,
Auctioneer
AU-000513L

No out of state checks
**ALL TRUCKERS AND
FARMERS WELCOME**

MELHORN SALES, SERVICE, TRUCKING CO.

1010 W. Main St., Mount Joy, PA 17552

The only full service company; in this area, to handle the total needs of the poultrymen.

Which Includes:

- Area distributor of a complete line of
Bio-Lab Poultry & Swine sanitation
products. Including: sow shampoo,
field disinfectants, hatchery disinfect-
ants, egg wash.
- DEKALB chicks & started pullets sold
by Clay Mumma, Nelson Groff &
Harold Mishler.
- Complete loading & unloading of
pullets & spent hens.
- New modern dollie equipment to move
your pullets fast and efficiently with
minimum stress to the pullets.

*Place Your Confidence In A Full Service Company That
Wants To Be Worthy Of Your Business*

For More Information Phone:

717-653-1102

Monday - Friday 8:30 AM - 4:00 PM

