

## Solid Waste Hearings Scheduled In Lancaster Co.

LANCASTER — A series of four public hearings on Lancaster County's solid waste management plan will be held at various locations throughout Lancaster County in June and July. The public hearings, sponsored by the Lancaster County Commissioners' Solid Waste Advisory Committee

(So1WAC), will be held on the following dates and at the following locations:

Date	Location
Thursday, June 26, 1986	Ephrata Sr. High School Audion
Wednesday, July 2, 1986	Solanco High School Cafeteria

Wednesday, July 16, 1986  
Lancaster Co. Courthouse, 6th Floor Meeting Room

Wednesday, July 23, 1986  
Hempfield High School Large Group Room

All public hearings will begin at 7 p.m.

The draft plan, which was prepared by the consulting firms BCM Eastern, Inc. and The Greenly-Polhemus Group, examines the options that are available for managing the solid waste stream, and recommends an optimal system for the storage, collection, transport, processing, and disposal of solid waste. The draft plan does not examine

specific sites for the proposed components of the optimal system. So1WAC accepted the draft "Lancaster County Solid Waste Management Plan 1986" for public distribution during the Committee's meeting on May 22, 1986. Following compilation of the comments from the public hearings and public officials' meetings, a final draft will be presented to So1WAC and the County Commissioners for adoption in August, and then be sent to the Department of Environmental Resources for approval. The county will then seek local municipal adoption of this plan as a new Solid Waste Management Plan for Lancaster County.

The public is encouraged to attend one of these public hearings. Copies of the draft plan are available for review at the Planning Commission office. For further information on the draft plan or on these public meetings, contact Nancy E. Parker, Associate County Planner, at 299-8333.

## 30 YEARS AGO THIS WEEK

—As a preliminary to select livestock judging teams for Pennsylvania 4-H Club Week in August, around 60 farm youths and advisors from seven counties participated in an elimination contest at Stauffer Homestead Farms, R1 East Earl. Represented were Lancaster, Chester, Montgomery, Franklin, Lebanon, York and Adams counties. Four-H members from some of these counties earlier took part in a Centre County meeting.

—The value of products sold in 1954 by operators of 7,951 farms in Lancaster County was \$80 million according to a preliminary report of the 1954 Census of Agriculture published by the Bureau of the Census U.S. Department of Commerce.

—John D. Stoner, 19, son of Mr. & Mrs. John H. Stoner, R7 Lancaster, was named a regional vice president for a 10-county area of the state FFA. Stoner who farms with his father on an 80-acre farm and a 100-acre farm south of Lampeter graduated in 1955 from Strasburg-Lampeter where he was active throughout his school career in both class and FFA chapter offices.

—Members of the Washington

Boro Tomato Growers Association are anticipating an excellent crop according to residents of that area. Stocks are heavily latent with the green fruit at this time and many are supported by tobacco lath.

—Lancaster Poultry Exchange's sale prices advanced Tuesday moving up a 1/2 cent a pound to average 20.56.

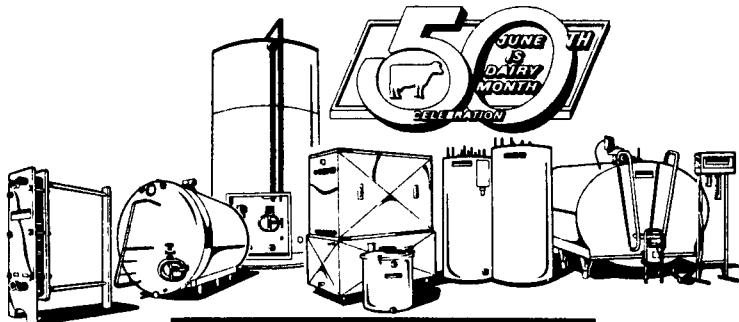
—Friday, July 20, is the date when growers will determine how they want to market their 1957 wheat crop. Farmers who will harvest more than 15 acres of wheat as grain on a farm in 1957 are eligible to cast ballots in the wheat quota referendum.

—Sweet corn plants in Pennsylvania produced good yields without extra magnesium according to a three-year study just reported by soil scientists at the Pennsylvania State University.

—A new record placing fourth in milk production among the ten highest of the Guernsey breed in her class has just been completed by the Registered 'Cow Clarion Farms LuLuBelle, a 10-year-old owned by Charles E. Harding at Maplevale Farm in Brookville, PA. LuLuBelle produced 17,175 pounds of milk and 699 pounds of fat in 305 days.

## Thanks!... DAIRY FARMERS

JUNE is DAIRY MONTH... a time to thank the dairy farmers of America for bringing us the goodness of milk and other fine dairy products.



**MUELLER**  
Dairy Farm Equipment

### RUFUS BRUBAKER REFRIGERATION

Southern Service Center  
R.D. 3,  
Dry Wells Rd.  
Quarryville, PA  
717-786-1617

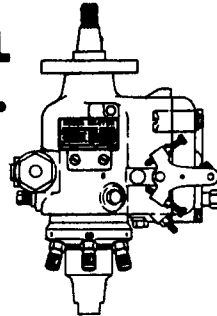
614 Penryn Rd.  
MANHEIM, PA  
717-665-3525

Northern Service Center  
RD 1, Box 199  
Myerstown, Pa.  
717-933-4711

Used 400 and 500 Gallon Coolers Available!  
Call For Other Tank Sizes And Prices!

## PENN DIESEL SERVICE CO.

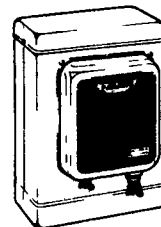
Diesel Fuel Injection Specialists



- \* Custom Rebuilding
- \* Calibrated For Maximum Power, Performance, Economy & Engine Life
- \* Authorized Sales & Service
- \* Service Since 1952
- \* Full Line Rebuilder For All Your Requirements
- \* FREE Clean & Check Injectors Thru 5/31/86

337 N. Fairville Ave., Interstate 81, Exit 27  
Harrisburg, PA 17112  
PA 800-223-8836  
717-545-4207

PARMAK  
Made in U.S.A.



THE NEW IMPROVED  
1986 MODEL  
MAGNUM 12 FENCER

IT'S THE ONLY KNOWN BATTERY FENCER WITH SUCH AN INTENSIVE SHOCK w/UL APPROVAL

Also Only Known Battery Fencer w/FULL ONE YR. WARRANTY Including Lightning Damage

- Much More Cattle Holding Power Under Extreme Fence Conditions.
- Shocks Through Wet Weeds And Brush. Prompt Local Service Available. All Components Replaceable.

MAGNUM 12 UNITS AS LOW AS \$60.50  
The Hottest Fencer In This Price Range

SALES AND SERVICE

**PEQUEA BATTERIES**  
Ronks, PA 17572  
Distributor & Warranty Station For Parmak

## FARM BUILDINGS NEED PAINTED?

Let Seal Crete **BRIGHTEN** Up Your Life

"The Farm Painting Specialist" Since 1961



We Are The Fussy One's

OUR SPECIALTIES ARE:

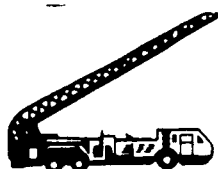
AGRICULTURE - COMMERCIAL - INDUSTRIAL - CHURCHES

- Barn Painting
- Milk House
- Roof Coating
- Water Proofing Silos
- Stucco Farmhouses

Paint It Now, Before The Snow Flies!

The Job Must Be Done To Your — Satisfaction —

For FREE Estimate CALL



## Seal Crete Inc.

PAINTING & WATERPROOFING  
RD 2, Box 417, Ephrata, PA 17522 • 717-859-1127