

Weekly Summary

Harrisburg, PA
Friday, June 20

Report supplied by PDA
15 Livestock Markets

CATTLE: 6961. Compared with 7755 head last week and 7084 head a year ago. Steers unevenly steady; heifers, cows and bulls mostly steady; High Choice & Prime 52.00-56.60; Choice 50.00-56.00; Good 46.00-51.00; Standard 40.50-48.00; Choice heifers 47.50-53.00; Good 44.00-49.00; few Standard 40.75-44.00; Breaking Utility & Commercial cows 36.75-42.25; Cutter & Boning 35.00-39.50; Canner & Cutter 31.00-36.00; shells 22.00; few Choice bullocks 48.75-52.50; Good 44.00-50.50; YG No. 1, 1200-2100 lb. 45.00-51.00; No. 2, 900-1400 lb. 39.00-45.35.

FEEDER CATTLE: Large & Med. No. 1, 300-700 lb. steers 48.00-63.00; Large & Med. No. 1, heifers 300-700 lb. 40.00-50.00; no bulls.

CALVES: 3336. Compared with 3540 head last week and 3580 head a year ago. Mostly steady to weak; few Prime 97.00-104.00; Choice 65.00-90.00; Good 55.00-74.00; 90-110 lb. 45.00-60.00; 70-90 lb. 38.00-52.00; Utility 50-100 lb. 25.00-40.00.

FARM CALVES: Holstein bulls 90-130 lb. 75.00-120.00; few heifers 90-125 lb. 52.00-84.00.

HOGS: 4998. Compared with 4841 head last week and 5575 head a year ago. 1.00-2.50 higher; most advanced latter part of weak; No.

1-2, 210-250 lb. 52.50-56.00; No. 1-3, 200-255 lb. 51.00-54.50; No. 2-3, 200-260 lb. 49.00-52.50; few No. 2-4, 230-280 lb. 46.00-49.00; few No. 1-3, 150-190 lb. 38.00-50.00; sows 1.50 higher; No. 1-3, 300-700 lb. 35.75-44.00; boars 30.00-37.00.

FEEDER PIGS: 867. Compared with 1174 head last week and 1005 head a year ago. Mostly steady; 20-35 lb. 20.00-38.00; 35-55 lb. 30.00-41.00; 50-90 lb. 40.00-54.00.

3 GRADED FEEDER PIG SALES: 2513. Compared with 2415 head last week and 2805 head a year ago. Strong to 15.00 higher; most advanced under 40 lbs.; 30-40 lb. 110.00-132.00; 40-50 lb. 80.00-112.00; 50-60 lb. 88.00-100.00; No. 2-3, 30-40 lb. 100.00-122.00; 40-55 lb. 86.00-91.00; all per hundredweight.

SHEEP: 1257. Compared with 1355 head last week and 1100 head a year ago. Steady to 5.00 lower; High Choice & Prime 60-115 lb. 71.00-80.00; few 30-60 lb. 80.00-92.00; Choice 60-110; 65.00-73.00; Good & Choice 50-80 lb. feeder lambs 60.00-75.00; sl. ewes 14.00-30.00.



GIGANTIC SELECTION
IN
Lancaster Farming's CLASSIFIEDS

The New Action Look

4-Wheel Drive - 20 H.P. Light Utility Tractor

by **STEINER**



Call For
FREE DEMONSTRATION

- Single Shift Hydrostatic Drive
- High Flotation Tires of Equal Size
- Front Mounted Accessories for Greater Control & Visibility
- Low Center of Gravity for High Stability
- Center Pivot Frame with Power Steering

QUICK CHANGE ATTACHMENTS Commercial Quality Machine

- 48" & 60" Mower Deck
- 48" Snowblower
- 48" Tiller
- 3-Point Lift
- 48" & 60" Dozer Blade
- Lawn Vacuum
- Rotary Broom
- Utility Trailer

WES STAUFFER ENGINES & EQUIP.
RD 3, Ephrata, PA 17522
(717) 738-4215

Ephrata Exit New Rt. 222, 1/2 Mile West
On Rt. 322, Turn left onto Pleasant Valley Rd.

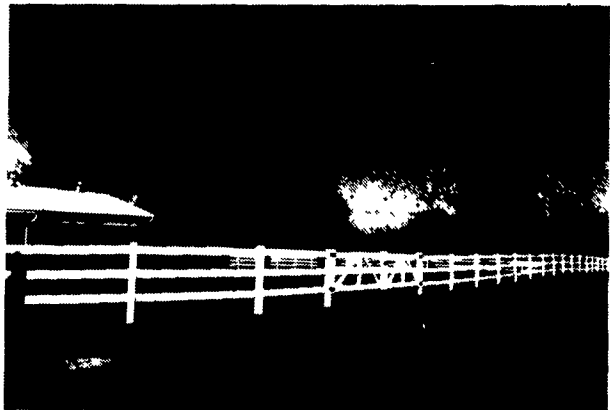
POLYVINYL P.V.C. PRODUCTS

100's Of Uses

P.V.C. RAW MATERIAL

- 2x4
- 2x6
- 2x8 T&G
- 4x4
- 5x5
- 7/8" x 1 1/2"
- 7/8" x 3"
- U-Channel
- Pipe • Accessories, Etc.

P.V.C. WHITE RAIL FENCE



3-Rail Fence w/Gates "Never Need Paint"
P.S. Polyvinyl will not rot, splinter, chip, etc.

Apply To

QUALITY FENCING & SUPPLY

WHOLESALE AND RETAIL

R.D. 1, Box 428 New Holland, PA 17557

(717) 354-9760

Send For Free Catalog

Folk Festival Set For June 28 to July 6

KUTZTOWN — It will be "Hello dart fry'n'd" (Hello there, friend) when the 37th annual Folk Festival gets underway Saturday, June 28th, and the hearty Pennsylvania Dutch greet returning visitors from across the country.

They will come to see more crafts, enjoy more demonstrations, eat more mouth watering food, and more than ever enter wholeheartedly into helping preserve and perpetuate the life and customs of early Pennsylvania Dutch settlers.

To many, the 1,500 handmade quilts now judged and hanging in

the large pavilion will be a source of wonderment.

Others will be pleased that Auctioneer Carl Groff has assembled many new treasures at the Main State for his popular afternoon Country Auction.

Almost everyone will visit one or more of the food stands or large church eating tents to enjoy the rich and wholesome menus that cause folks to "eat-'til-they ouch."

All over the 35-acre Festival Grounds there is an air of expectancy as craftsmen are arriving to set up their displays and demonstration areas. In-

dications are that this year's nine-day event will surpass all previous Festivals with "See the U.S.A." as the strong travel emphasis.

Lillian Kauffman will sing in the Old Oley Union Church, Cyrus Hyde will conduct tours through his herb garden, Harold Moyer will teach the Pennsylvania Dutch dialect in the One-Room School. The blacksmiths, the soap-boilers, the apple butter makers are all set to demonstrate the old life-styles.

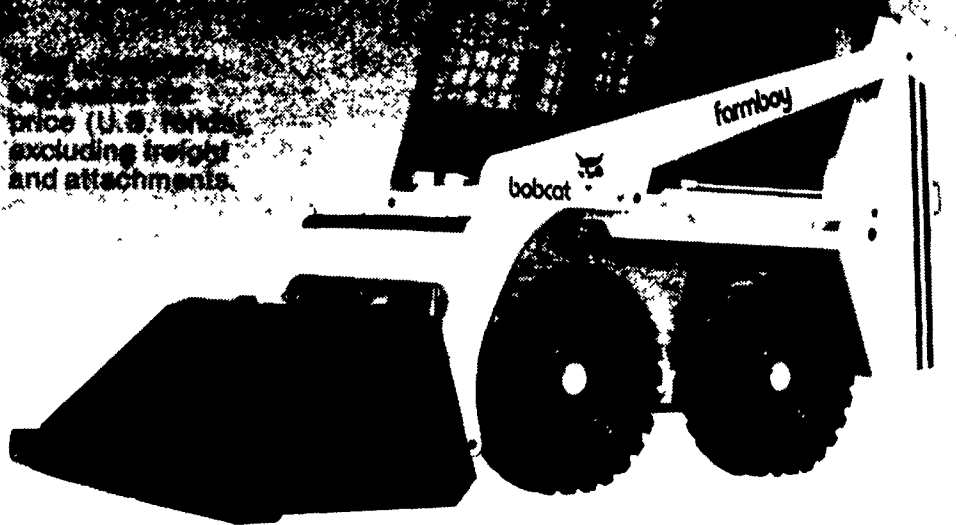
New craftsmen this year will include a pen and ink Amish artist, a wooden spoon designer, a ladderback chair maker, and an expert in magical marionettes.

Introducing

bobcat farmboy
All Around The Farm

ONLY
\$6250

Price (U.S. Dollars) excluding freight and attachments.



BIG FEATURES, SMALL PRICE!

Whether you are cleaning, loading, feeding or hauling, Farmboy will do it faster and better. Farmboy is compact, versatile and maneuverable to go through narrow doorways and under low overhangs. It works in tight areas the larger loaders can't get into, which cuts down on a lot of hand chores.

Farmboy...Built in the Bobcat loader tradition of quality workmanship, design, manufacturing and parts, and priced small at only \$6250.

See Your Nearest "Farmboy" Dealer Today!

Carlisle, PA
PETERMAN FARM EQUIPMENT
717-249-5338

Chambersburg, PA
CLUGSTON IMPLEMENT INC.
717-263-4103

Harrisburg, PA
HIGHWAY EQUIPMENT & SUPPLY CO.
717-564-3031

Hatfield, PA
LCL CONSTRUCTION EQUIP. SALE CO.
215-362-2510
Wilmington, DE
302-998-0128

Honesdale, PA
CHARLES H. SIEPIELA, INC.
717-253-3334

Honey Grove, PA
NORMAN D. CLARK & SON INC.
717-734-3682

Martinsburg, PA
BURCHFIELD'S INC.
814-793-2194

Mill Hall, PA
DUNKLE & GRIEB
717-726-3115

Needmore, PA
CLUGSTON FARM EQUIPMENT
717-573-2250

Palm, PA
WENTZ FARM SUPPLIES INC.
215-679-7164

Quarryville, PA
GRUMELLI'S FARM SERV.
717-786-7318

Slatington, PA
SCAT ENTERPRISES INC.
215-767-1711

Towanda, PA
S.P.E. INC.
717-265-4440

Tunkhannock, PA
BARTON FARM SUPPLY
717-836-3740

