

BUSINESS NEWS...

New Floor Design Highlights Gehl Box Spreaders

WEST BEND, Wisc. — Gehl Company's new 100 Series box spreaders incorporate a Clad-Tuff floor design for smoother, trouble free manure spreading.

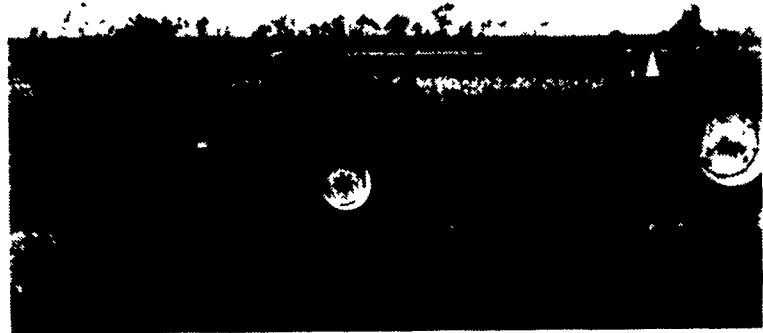
Clad-Tuff is a gel-coated, fiber-reinforced plastic (FRP) plywood floor. The top surface has an extra slippery coating. This coating is integrated with the underlying woven fiberglass which, in turn, is heat bonded to the top and bottom of the plywood.

"This creates a smooth, slick, seamless panel," says Brad Boncher, material handling

product manager. "The result is a specially constructed floor with the top and bottom sealed against liquids and acids to virtually eliminate decay and delamination."

The slick Clad-Tuff surface also reduces the force needed to break a frozen apron loose from the floor. Boncher emphasizes that less apron pull means less wear and tear on drives and apron chains.

Five spreader sizes, from 135 to 425 bushels, are offered in the new 100 Series line. All come with Gehl's full ten year warranty on the floor and sides.



A special gel coating makes Gehl 100-Series spreaders resistant to corroding manure acids.

Coba-Select Sires Open House

COLUMBUS, Ohio — Coba/Select Sires, Inc. will host its third Open House at Select Sires, Inc. near Plain City, Ohio on Tuesday, June 24, beginning with registration at 10 a.m. Dr. Wallace E. Erickson, general manager of COBA, says the Open House is planned for members, customers and friends in Coba's Ohio Division including Ohio, northwestern Pennsylvania, eastern Indiana and western West Virginia.

The Open House morning activities will include touring Select

Sires and Select Embryo's facilities near Plain City and the Darby Creek Sires-In-Waiting facility at Unionville Center.

After lunch, a brief program will begin, led by Fred Friday, president of Coba/Select Sires. Richard Chichester, general manager of Select Sires and several Select Sires staff will make brief presentations with closing comments by Dr. Erickson.

For more information contact: Lisa L. Keller, Communications Assistant, 614-878-5333.

Vicon Names Outstanding Dealer



Jim Huber, (left) Triple H Equipment, Peach Bottom, has been named Vicon Farm Machinery's outstanding dealer for 1985 by President Dennis Wright (right).

Huber received a plaque in recognition of the honor at a farewell banquet in Amsterdam, The Netherlands. Vicon entertained a group of 100 dealers and wives who qualified for the Holland trip for having made their 1985 sales goals.

Vicon Farm Machinery's headquarters are in Chesapeake, Virginia.

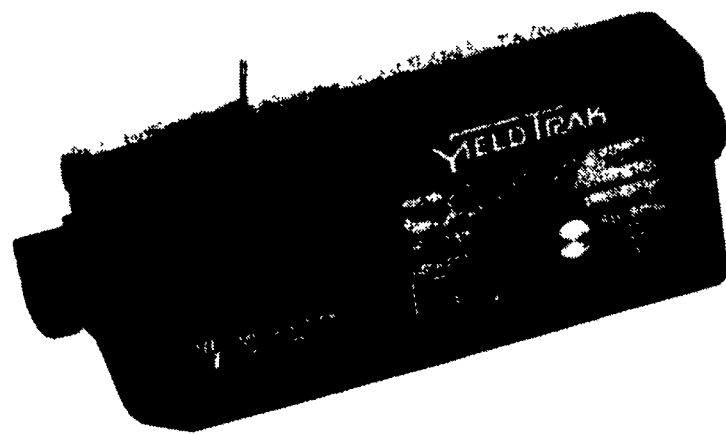
Monitor Provides Feed-Back On Harvest

MANKATO, Minn. — Micro-Trak's Yield Trak is an electronic combine monitor that provides accurate in-field measurement of bushels per acre, total bushels harvested, speed in MPH and total acres worked.

The system provides on-the-go measurement of speed and acreage so the farmer or custom combiner can continually monitor his progress and maintain a constant rate for maximum efficiency.

The bushels per acre and total bushel count are updated each time the combine's unloading auger is operated. The bushels per acre function is divided into two counters with independent resets so yields can be pinpointed by the tankful or over an entire field. With this type of information the farmer can assess the effects of weeds, insects or weather; compare the performance of different seed varieties, establish yield records for each field or soil type; and load trucks within legal limits.

Setting up the system basically requires connecting it to the combine's 12-volt electrical system, entering the combine's swath width and installing and calibrating two sensors.



Yield Trak's combine monitor can be calibrated to measure corn, soybeans, wheat and other small grains.

Yield Trak can be used on any make or model of combine and calibrated to measure corn, soybeans, wheat and other small grains. Features include an illuminated five-digit display, electronic memory for storing totals, a tank empty sensor and a manual run/hold switch to stop the

acre count when turning or moving between fields.

Yield Trak comes with installation hardware, wiring, an operator's manual and a field/crop booklet for recording management information.

For further information call Micro-Trak Systems, Inc. toll-free at 1-800-328-9613.

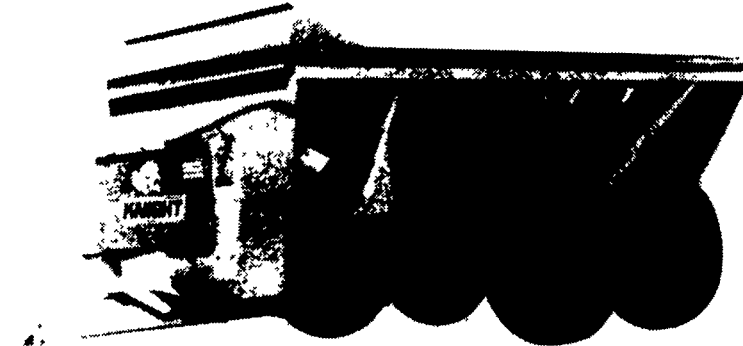
Knight Announces New Manure Spreader

BRODHEAD, Wisc. — Knight Manufacturing of Brodhead, Wisconsin, announces the Model 1514 "Slinger." This is the newest model in their side expeller manure spreaders. The 1514 — about 1,600 gallons, joins the 912 — about 1,000 gallons, and the 2,500 — about 2,700 gallons, in the Knight line.

The innovative Knight spreaders utilize a heavy, fully-flighted auger to move material forward into a series of paddles, which force it into 12 nine-pound hammers turning at over 800 RPM. These peel the material off and sling it over an even spread pattern of 30 to 50 feet.

Slurry manure or pen-packed can be handled effectively with the "Slingers."

In addition to dairymen, the Knight "Slingers" have been enthusiastically accepted by poultry people, lime sludge operations, and city waste



Knight's "Slinger" side expeller spreaders come in three capacities, from 1600 to 2700 gallons.

management systems.

Knight equipment is available throughout the United States and Canada through a series of direct

sales areas, distributors, and representative agents.

For information, phone 608-897-2131.

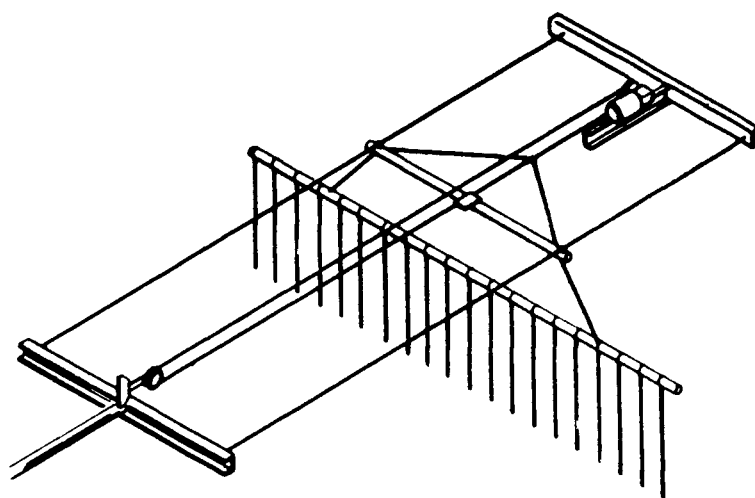
New Crowd Gate Is Totally Suspended

ELK GROVE VILLAGE, Ill. — A newly developed cow control gate, featuring a totally suspended design and automatic turnaround, is now available from Westfalia Systemat, Elk Grove Village, Illinois.

The Westfalia "Time Saver" Crowd Gate provides a safe and economical means of "automatic advance/stop" control that combines sound and electrical impulses to guide cows into prep stalls and milking parlors more efficiently. Cows quickly learn to respond to the gentle urging of electrical impulses and soon learn to react to the buzzer alone.

Lightweight and easy to install, the "Time Saver" Crowd Gate's totally suspended, "no track" design eliminates the need for reinforced fencing or support rails. Offering variable installation height, the "Time Saver" fits any cow holding area with either side or rear access. The standard unit accommodates holding areas up to 22 feet wide and 75 feet long, and can be adapted to larger installations up to 32 feet wide and 100 feet long.

Engineered for simplicity and practicality, the "Time Saver" Crowd Gate's automatic turnaround feature automatically reverses the gate when it reaches the end of its travel. To ensure continuous, trouble-free operation, all components are permanently mounted, separate from the gate.



Westfalia's crowd gate eliminates need for support rails with totally suspended design.

The suspended trainers are made of durable, polyethylene coated copper. Buzzers, chargers, control box, heavy-duty limit switches and all installation hardware are in-

cluded with the gate.

For additional information, contact Westfalia Systemat, 1862 Brummel Drive, Elk Grove Village, IL.

Southern States Offers Milk Replacers

RICHMOND, Va. — Southern States Cooperative's new Insta-Mix milk replacers feeds will save dairymen time and fuss in mixing and provide the same amount of nutrition, according to Bob Buehler, manager of dairy and swine feed services for the co-op. The feeds for calves are now being

manufactured by Land O'Lakes, Minneapolis, Minn., using a new process which improves solubility.

"The new manufacturing method is called an 'agglomeration process,' which clusters the milk replacer particles and gives the feed the instant mixing quality," Buehler says.