

**Engine Parts** **Gaskets**  
**Cylinder Heads**  
**Rebuilt or Exchange**  
**Engine Rebuilding**  
**Spring Garden Repair**  
 RD 1, Box 204  
 Kinzer, PA 17535

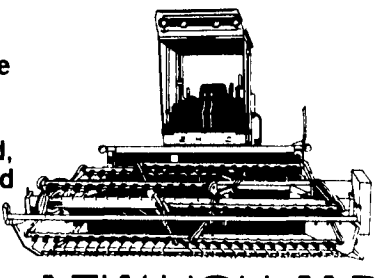
**DEPENDABLE MOTOR CO.**  
 East Main St., Honey Brook, Pa. 215-273-3131-273-3737

**NEW EQUIPMENT SPECIALS**

- NH #320 w/#70 Thrower ..... \$12,800
- NH #256 Steel ..... \$2,345
- NH #718 Harvester (Demo)
- NH #28 Blower ..... \$2,915
- NH #770W Pickup Head ..... \$1,925

**Plus Big Cash Savings On All Equipment**

1 ONLY Lease  
 Model 1495  
 Haybine.  
 Self-Propelled,  
 Fully Equipped



Call for the  
 best price in  
 the valley.  
 A fantastic  
 deal.

All This Plus  
 0% Financing—12 mos.  
 or  
 No Financing Til 9/86

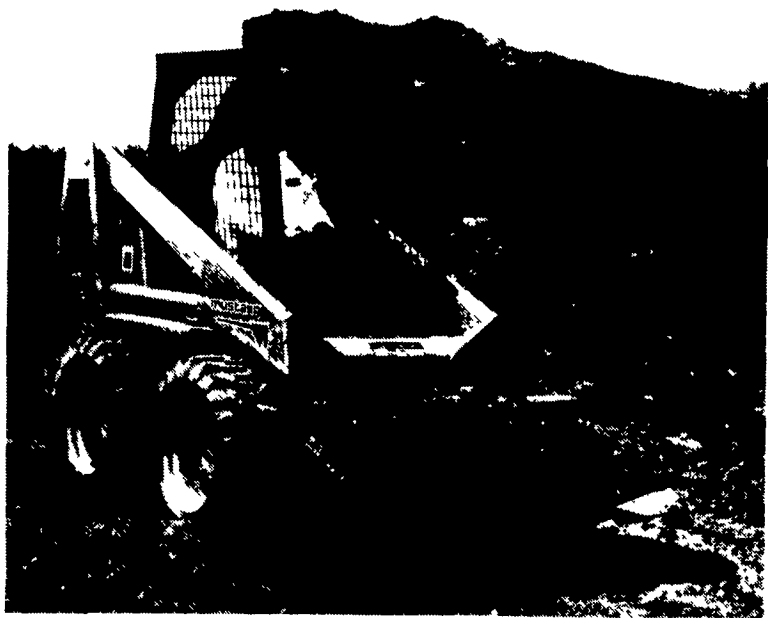
**NEW HOLLAND**

**PLUS MORE EQUIPMENT IN STOCK - CALL TODAY**

- Waiver of Finance On All New & Used Hay Equipment Till September 1, 1986
- OR
- Cash Rebates Up To \$7400
- OR
- 0% Financing - 12 Mos.
- 6.9% Financing - 18 Mos.
- Waiver of Finance On All New & Used Forage Equipment Till September 1, 1986
- 8.9% Financing - 24 Mos.
- 9.9% Financing - 36 Mos.

**DEPENDABLE IS MORE THAN OUR NAME**

**mustang 442**



**Performance Leader**

**ANNOUNCING**  
**Price Reduction**

**HORST GROUP** **power pro equipment**

- (717) 354-4241 new holland, pa 17557  
780 east main street
- (717) 667-6504 milroy, pa 17063  
p.o. box 567 - route 322
- (609) 228-4702 deptford, nj 08096  
514 elm st. at route 41

**When You Buy, Think Power Pro**

**USED TRACTORS**

AC 7040, cab & air, power shift; 7030, cab & air, 7010 Cab & Air, power shift; 6080; 6060; 4WD; 5050 4WD w/loader; 200; 190XT; 190XT w/cab; 175 diesel; 160; D17; D15 series II factory 3 pt.; D15; G w/hydr. & cultivator; B.  
 JD 3020 diesel; 3010 diesel; 2510 powershift.  
 IHC 674, 544; 424 w/hydr. dump loader; 230; 140; 100; Super A, with equipment; Cub; Cub low boy w/5' Woods rotary mower; Cub low boy w/Mott Hammer knife mower; Cub w/cultivator.  
 FORD: 7700 4WD; 7600 diesel, high clearance; 7000; 6600 w/quick tach front end loader; 5000; 4000; 600; Major diesel, front end loader; Jubilee; and 8 N's.  
 KUBOTA: 7500; 7200 4WD w/loader & mower, 89 hours, like new; 4WD demonstrator; L 225 w/cab.  
 MF: 285; 265 diesel; 175 diesel; 165; 135; 65; 65 diesel; 50 diesel; 40; Ferguson 30, 40.  
 OLIVER: OC 6 diesel, crawler, good bottom.  
 LONG: 560 4WD.

**HAY EQUIPMENT**

HAYBINES: NH 477-7', Hesston PT7, PT10, 1070, 1090-9', NH 489--very good-9'.  
 SELF-PROPELLED HAYBINES: Hesston 6200, 310, CUTDITIONERS: NI 279-9', NH 270, 272-7'. HAY TEDDERS: (New)-Fahr 4 star 17 ft., Kuhn 2 star, Grimm PTO reel type Deutz-Fahr side rakes. (Used)-Fahr 4 star, Lely 2 star Kuhn 2 star, 3 pt., Grimm PTO and ground drive. BALERS: MF 124, NH 270, 268, 276, 310. BALERS w/THROWERS: NH 273, 275, 315, 320; Hesston 4500, MF 124, IHC 425. ROUND BALERS: Hesston 5800, NH 846, 851, 852. Zimmerman 36 & 40 ft. elevators. New wood & steel bale racks. In stock new 6, 8, & 10 ton running gears, 12 ton tandem running gear. Large selection of sickle bar mowers, 3 pt. hitch, semi mount, & mounted. Call for your needs.  
 SIDE RAKES: NH 256, 56, 660 w/dolly wheel, NI, IHC 35 w/dolly wheel, NI wheel rake. Deutz 3 pt. hitch disc hay mower. Hesston 1014 2+2 hydr. swing mower conditioner just returned from college lease. Hesston stack Hand 10 & 30. Tye no-till seeder.

**FORAGE HARVESTERS:**

Hesston 2000-100, 2000-150, 7020; NH Super 717; large selection of pick up heads. JD 5400 self-propelled forage harvester. IHC, Kools, and NI forage blowers.

FORAGE BOXES: IHC- 3 beater w/roof, Grove 2 beater, H & S 3 beater, Lamco 2 beater.

**NEW DISTRESSED MACHINERY - NEEDS TO BE SOLD!**

New left over weathered hay tools at reduced prices: (2) NI 279-9' cut-ditioners; NI 272-7' cutditioner; NI 406 hydr. drive side rake w/dolly wheel; NI 7' trailer mower - 1 with hydr. lift and 1 with mechanical lift; Mechanical 1 row transplanter; Arts way silage blower; NI 555 baler w/thrower.

**NEW EQUIPMENT**

Full line of Kubota tractors, loaders, mowers and tillers, low interest on all models. Also just arrived: Deutz-Allis lawn and garden tractors with special discounts for early buyers. Deutz-Allis farm tractors from 40 to 110 horse power in stock. 3 pt. cement mixers, blades, loaders, backhoes, trailers and carts.

**INDUSTRIAL**

TRACTOR LOADER BACKHOES - (2) Case 580C w/cab, 1 with extendahoe. CRAWLER LOADER - AC 655. TRACTORS WITH LOADER, 3 PT. HITCH & PTO - IHC 2444, MF 40, MF 2200. SKID STEER LOADER - Ford CL40 water cooled engine, good condition; NH 225, Bobcat 610 gas, Bobcat 611 Deutz diesel. LOG SKIDDER - (2) JD 440 series A; Case 450 dozer, 6 way blade; Ford 50 HP power unit. FORKLIFTS - Ford, AC 600 series - 21 ft. lift. JD 9300 backhoe. AC 840 1 1/2 yd. articulated payloader; AC 940 2 yd. articulated payloader. 1 ton paving roller. 1977 Ford F700 truck with dump body, very good. 2 axle - 6 ton Tag-A-Long trailer; 10 & 18 ton Tag-A-Long trailer.

**SPRAYERS**

3 pt. & trailer sprayers, several orchard sprayers - air blast. Meyers trailer air blast John Bean trailer hand gun PTO driven

**LIQUID MANURE EQUIPMENT**

Hedlund Martin Vanguard 2400 gal. tandem spreader. 2100 gal. liquid spreader w/knife injector. NI Basin Pump. New Hedlund Martin liquid manure pumps & tanks in stock for immediate delivery. Patz 3000 gallon liquid tanker Better Bilt 1500 gallon liquid tanker Better Bilt PTO liquid manure pump Used tank type spreaders, 4 used PTO ground drive conventional spreaders Better Built 8' Manure Pit Pump, very good cond. New Hawk 170 tank spreader at dealer cost, only 1 available

**MISCELLANEOUS**

Shaver post pounder, 3 pt. hitch York rakes Servis 10 ft. 2 spindle trailer rotary mower, Bush Hog 5 & 6 ft. 3 pt. rotary mowers, Howard heavy duty 5 & 6 ft. 3 pt. rotary mowers, Small Davis backhoe for skid steer or 3 pt. mounting, IHC fast hitch carry all platform, Mott Hammer knife mower for Farmall Cub, 3 pt. hitch Mott Hammer knife mower, Hedlund Martin equalizer manure loader, (3) Farmhand Corn Blurrs for high moisture corn, 20 misc. hydr. front end loaders for various models and make tractors - call for your needs, Valby 3 pt. wood chipper, AC 100 HP D power unit with P.T.O. and clutch - choice of three. Just received new Kubota M 7950 DT Tractor with 4WD high clearance ideal for muckland farming - 76 PTO horsepower. Mounted cultivator for Farmall Cub, Super C, 200, 340; PTO Roller Mill, like new.

**WE SHIP PARTS DAILY BY UPS.**

**THIS WEEK'S SPECIAL**  
 Farmall 560 Tractor  
 w/Forklift, runs & operates  
**\$4,465.00**

**MARSHALL MACHINERY, INC.**

Rt 652, Midway Between Indian Orchard and Beach Lake Honesdale, R.D #4, PA 18431  
 PHONE: (717) 729-7117  
 SALES & SERVICE  
 Deutz-Allis, AC, Kubota, Hesston, New Idea, CDS Industrial formerly AC light industrial