

Lancaster Co. Fair Season Begins in Elizabethtown

ELIZABETHTOWN — Arts and crafts displays, floral exhibits, livestock shows, a baby contest, sheep to shawl competitions, live entertainment, arm wrestling, and a tractor pull are just some of the events being planned for the Elizabethtown Fair, August 26 through August 30 at the East High Street Fairgrounds.

The five-day fair kicks off the Lancaster County fair season with a wide range of activities, including rides, games, food, and

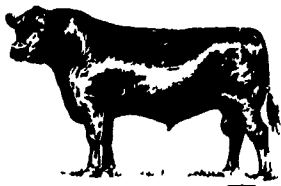
exhibits of all kinds.

"Commercial and civic stand-holders still have time to reserve their spaces for this year's fair", said Dave Kreamer, concessions chairman. Inside selling spaces are available and outside spaces are reserved on a first-come, first-serve basis.

"The design of the fairgrounds has been modified to centralize the rides and the standholders", Kreamer added.

Animal exhibitors and stand-

holders will be issued passes to park on the fairgrounds. Additional parking passes may be purchased for \$3, good for the



entire week, at the fair office.

For more information contact end of the summer. It's a good way to get out, see your neighbors and just have a good time", Hower said.

Penn State Offers Nursery Program

UNIVERSITY PARK — Retail nurseries and garden centers are among the fastest growing trade industries in both the nation and in Pennsylvania.

According to a recently published report by the Pennsylvania Chamber of Commerce and the Penn State Cooperative Extension Service, Pennsylvania experienced a 25.7 percent

increase in employment in this industry between 1979 and 1985.

The report, by Penn State agricultural economists Dr. William R. Gillis and Dr. Theodore E. Fuller, also identifies the florist trade as one of the very fastest growth industries in the nation.

"We are seeing a strong demand for managers and technical staff to support these growing industries," says Dr. David Beattie, assistant professor of ornamental horticulture and coordinator of the two-year technical program in Nursery Management at Penn State.

"Our program, which combines on-campus instruction and on-the-job training, is designed for those who already have some industry experience and want to pursue professional careers with nursery growers, landscape designers and garden centers," he continues. The program is offered by the Department of Horticulture in cooperation with a number of other departments in the College of Agriculture.

Registration for the two-year program will continue through August. The first-year program begins with classes at the University Park Campus from October to March and a six month on-the-job internship period from March to October.

On-campus instruction includes plant identification, propagation, turf management, soils, plant pests, nursery production and management as well as landscape use, design and maintenance. Additional courses in writing and speech communications help students become effective managers and supervisors.

Program faculty help students find training positions that match their interests and abilities. The majority who enter the program have extensive industry experience and approximately one-third have attended college in other fields. Most students are between the ages of 20 and 40. Nearly a third are women.

For more information about the program, housing, tuition and financial assistance, contact Dr. Beattie at (814) 863-2263 or write to Winter Courses, The Pennsylvania State University, 306 Agricultural Administration Building, University Park, PA 16802 and ask for a brochure.

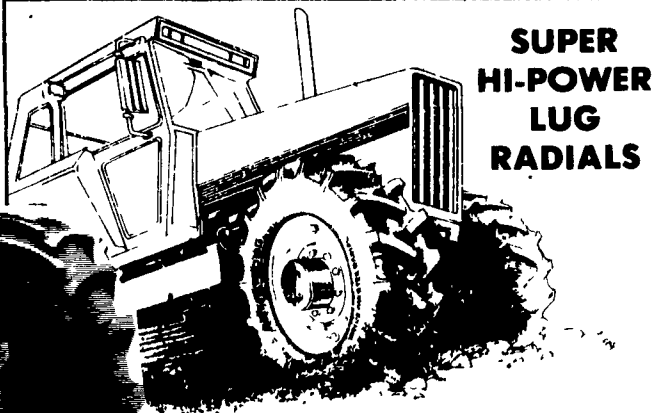
Your county extension office also has information on the technical program in Nursery Management.

ARMSTRONG

WE GO THE EXTRA MILE

Over 15,000 TIRES IN STOCK

SPECIAL OFFER
On
ARMSTRONG
RADIAL
FARM TIRES

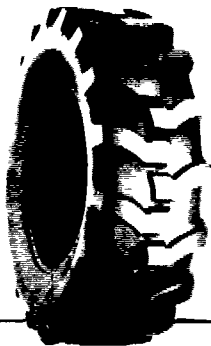


SUPER
HI-POWER
LUG
RADIALS

14 9R28 10 Ply	\$325 00
16 9R28 10 Ply	\$399 00
18 4R34 6 Ply	\$399 00
16R38 6 Ply	\$429 00
18 4R38 6 Ply	\$459 00
18 4R38 8 Ply	\$529 00
18 4R26 10 Ply	\$449 00
20R34 8 Ply	\$639 00
20 8R38 8 Ply	\$649 00
20 8R38 10 Ply	\$699 00

\$5000
CASH REBATE
From Armstrong
With Purchase Of
A Pair Of Super
Hi-Power Lug
Radials

Loader-Dozer



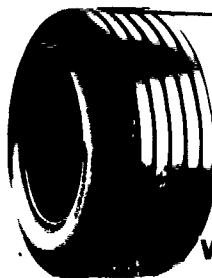
★ TUBELESS ★

16 9x24 8 ply	\$265 00
16 9x24 10 ply	\$330 00
17 5Lx24 6 ply	\$240 00
17 5x24 8 ply	\$270 00
15 5x25 12 ply	\$320 00
17 5x25 12 ply	\$445 00
19 5Lx24 10 Ply	\$359 00
18 5Lx24 12 Ply	\$359 00
21Lx24 12 Ply	\$465 00

★ TUBE TYPE ★

14 9x24 6 ply	\$200 00
14 9x24 8 ply	\$220 00
16 9x24 6 ply	\$220 00
16 9x24 8 ply	\$235 00
16 9x24 10 ply	\$280 00
17 5Lx24 8 ply	\$240 00
16 9x28 8 ply	\$260 00
18 4x28 10 ply	\$340 00
20 5x25 12 ply	Call For Quote
23 5x25 16 ply	Quote
1300x24 10 ply	\$225 00
1300x24 12 ply	\$245 00
1400x24 10 ply	\$255 00
1400x24 12 ply	\$280 00

We Have Lots Of
USED TIRES
In Stock!



WAGON
TIRES

26 1200x12 4 ply	49 00
8 5Lx14 6 ply	41 00
9 5Lx14 6 ply	44 00
9 5Lx14 8 ply	49 50
11Lx14 6 ply	49 00
9 5Lx15 6 ply	42 00
9 5Lx15 8 ply	44 00
11Lx15 6 ply	43 00
11Lx15 8 ply	47 00
25x7 50x15 4 Ply Tubeless	44 00
25x7 50x15 6 Ply Tubeless	49 00
27x9 50x15 4 Ply Tubeless	53 00
27x9 50x15 6 Ply Tubeless	60 00
27x9 50x15 8 Ply Tubeless	65 00
31x13 50x15 6 Ply Tubeless	88 00
31x13 50x15 8 Ply Tubeless	99 00
11Lx15 8 ply tubeless	50 00
11Lx16 8 ply	58 00
11Lx16 10 ply tubeless	74 00
12 5Lx15 10 ply	75 00
12 5Lx16 14 ply	85 00
14Lx16 1 12 ply	140 00
16 5Lx16 1 10 ply tubeless	160 00

Deduct \$5.00 During June

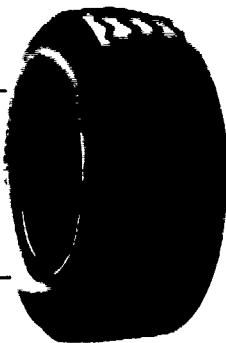
Skid Loader



700x15 6 ply	\$65 00
750x15 6 ply	\$68 00
10 16 5 6 ply	\$80 00
12 16 5 8 ply	\$120 00
Steel Shield	
10 16 5 6 ply	\$95 00

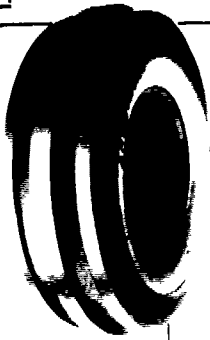
Above Tires Shipped To You FREE

Contractor F-3



11Lx15 8 ply	\$80 00
11Lx16 8 ply	\$92 00
11Lx16 10 ply	\$98 00
750 800x16 10 ply	\$80 00
11Lx16 12 ply	\$130 00
145 75 16 1 10 ply	\$225 00

Front Tractor



400 12	\$22 00
400 15	\$24 00
500 15	\$31 00
550 16 4 ply	\$33 00
550 16 6 ply	\$36 00
600 16 4 ply	\$37 00
600 16 6 ply	\$41 00
650 16 6 ply	\$42 00
75L 15 6 ply	\$50 00
750 16 8 ply	\$54 00
750 16 6 ply	\$50 00
750 16 8 ply	\$64 00
9 5L 15 6 ply	\$55 00
9 5L 15 8 ply	\$60 00
1000 16 6 ply	\$80 00
11Lx15 8 ply	\$75 00
1100 16 8 ply	\$110 00
14L 16 1 8 ply	\$160 00

Above Shipped UPS - No Charge



Small Rear Farm

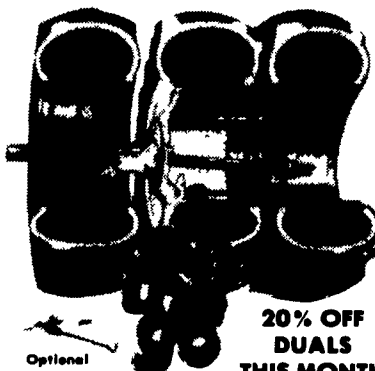
750x20 4 ply	59 95
750x24 4 ply	64 95
8 3x24 4 ply	79 00
9 5x24 4 ply	84 00
11 2x34 4 ply	135 00
11 2x36 4 ply	137 00
12 4x36 4 ply	175 00
13 6x36 4 ply	189 00

Hi Power Lug



11 2x24 4 ply	100 00
14 9x24 4 ply	150 00
14 9x24 6 ply	165 00
14 9x24 8 ply	190 00
16 9x24 6 ply	210 00
16 9x24 8 ply	190 00
14 9x26 6 ply	172 00
18 4x26 6 ply	235 00
23 1x26 8 ply	525 00
23 1x26 10 ply	600 00
11 2x28 4 ply	115 00
12 4x28 4 ply	130 00
13 6x28 4 ply	145 00
13 6x28 6 ply	160 00
14 9x28 4 ply	160 00
14 9x28 6 ply	175 00
16 9x28 6 ply	220 00
16 9x28 8 ply	240 00
18 4x28 6 ply	275 00
16 9x30 6 ply	230 00
18 4x30 6 ply	270 00
23 1x30 8 ply	650 00
24 5x32 10 ply	750 00
16 9x34 6 ply	255 00
18 4x34 6 ply	299 00
18 4x34 8 ply	325 00
20 8x34 6 ply	459 00
20 8x34 8 ply	510 00
23 1x34 8 ply	689 00
11 2x38 4 ply	140 00
12 4x38 4 ply	168 00
13 6x38 4 ply	179 00
13 6x38 6 ply	198 00
14 9x38 6 ply	224 00
15 5x38 6 ply	225 00
16 9x38 6 ply	279 00
18 4x38 6 ply	325 00
18 4x38 8 ply	365 00
20 8x38 8 ply	

the strongest, most reliable and easiest to install...



20% OFF
DUALS
THIS MONTH

M & W DUAL SUPER LOCK II

Tire	Price	Discount	You Pay	(12.1) Retail
18 4x30	\$650	\$130	\$520	(12.1) Retail
18 4x34	\$620	\$130	\$490	(12.1) Retail
18 4x38	\$630	\$140	\$490	(12.1) Retail
20 8x38	\$790	\$190	\$600	(16.1) Retail
20 8x34	\$780	\$170	\$610	(16.1) Retail

Above Duals Are The Strongest Clamp-On Dual Available Snap-On Also Available

★ 10-Hole Dual Axle Available At 20% Discount Now
★ All Duals Shipped To Your Farm Free During June

Ask About Our
4 Year Guarantee On
Rear Tires
Strongest In The Country

We Install Tires

On Your Farm

- Centre Hall • Williamsport
- Sunbury • Allentown
- North Penna • New Jersey
- Northern Maryland

Route 230
West

MUMMAU TIRE

Mt Joy,
PA

Serving Farmers In Penna. New Jersey
Northern Maryland and Delaware

Out Of State 717-653-1260 In Penna. 1-800-222-1729