



Livestock market and auction news

Shenandoah Valley Livestock

Harrisonburg, Va.
Saturday, June 7

Report supplied by auction
FEEDER CATTLE: Trend steady.

STEERS: M&L-1 300-500 lbs. 62.50-68.00; 500-700 lbs. 54.00-59.50; 700-1000 lbs. 52.00-55.25. S-L&M&L-2 300-500 lbs. 57.00-62.00; 500-700 lbs. 52.00-55.50; Holstein 300-1000 lbs. 38.75-46.50.

FEEDER BULLS: M&L-1 300-500 lbs. 53.00-62.00. S-L&M&L-2 300-500 lbs. 52.00-60.50.

HEIFERS: M&L-1 300-500 lbs. 50.00-54.00; 500-700 lbs. 45.00-50.25; 700-800 lbs. 45.75. S-L&M&L-2 300-500 lbs. 53.50; 500-700 lbs. 40.25.

STOCK COWS: Beef 440.00-490.00; Baby Calves 20.00-118.00.

SLAUGHTER COWS: Trend steady. Utility & Commercial 2-4 34.00-41.25; Canner & Cutters 1-3 30.00-33.75.

SLAUGHTER BULLS: 1&2 40.25-47.75.

LAMBS: Trend steady. Blue O High Choice & Prime 83.75; Red O Choice 73.00; Feeder Lambs

Choice 80.50; Slaughter Ewes 17.00-26.00; Head Ewes 38.00-41.00.

HOGS: US 1-3 200-240 lbs. 48.50; Sows 1-3 36.00-42.75; Boars 27.50.

VEAL: Choice & Prime 59.00-67.00; Good 45.00-59.00.

SLAUGHTER CALVES: Good & Choice 48.00-53.00.

Virginia Cattle

Richmond, Virginia
Northern, Va.

Thurs., June 5 to
Wed., June 11, 1986

Report Supplied by VDA
Head Count: 3,484

Trend: Steady to 2.00 higher.

STEERS: Medium 1 300-500 lbs. 59.50-68.50; 500-700 lbs. 54.00-67.00; 700-1000 lbs. 50.00-61.50. Large 1 300-500 lbs. 63.00-68.00; 500-700 lbs. 55.50-59.50; 700-1000 lbs. 47.50-57.00. Small 1 300-500 lbs. 55.50-62.50; 500-700 lbs. 48.50-61.50; 700-1000 lbs. 47.50-59.50.

HEIFERS: Medium 1 300-500 lbs. 47.50-57.00; 500-700 lbs. 45.75-52.50; 700-900 lbs. 43.00-44.75. Large 1 300-500 lbs. 49.50-50.50; 500-700 lbs. 45.00-54.00; 700-900 lbs. 45.75-49.00. Small 1 300-500 lbs. 45.00-

51.50; 500-700 lbs. 45.00.

South & Southwest Va.

STEERS: Medium 1 300-500 lbs. 57.00-67.00; 500-700 lbs. 55.25-63.00; 700-900 lbs. 52.50-54.50. Large 1 300-500 lbs. 58.00-64.50; 500-700 lbs. 58.00-61.00. Small 1 300-500 lbs. 54.00-60.00; 500-700 lbs. 48.00-55.50.

HEIFERS: Medium 1 300-500 lbs. 44.00-54.25, 500-700 lbs. 46.00-52.00. Large 1 300-500 lbs. 48.00-56.00; 500-700 lbs. 48.00-55.50. Small 1 300-500 lbs. 43.00-53.00.

New Wilmington Livestock Auction

New Wilmington, Pa.

June 9, 1986

Report supplied by PDA

CATTLE 176. Compared with last Monday's market: Slaughter cows steady. Few Choice 50.25-54.50, few Good 47.75-50.50. Few Choice heifers 48.75-51, few Good 44.25-45.50, few Standard 42.25-43.75. Breaking Utility & Commercial slaughter cows 38-41.25, Cutter & Boning Utility 35-39.25, Canner & Low Cutter 31-35.50, Shells down to 28.50. Yield Grade No. 1 1200-1855 lbs. slaughter bulls

47.00-50, few #2 980-1500 lbs. 49-53.75. Feeder Cattle: Medium Frame #1 500-750 lbs. heifers 47-52.75.

CALVES 285. Few Prime vealers 84.00-88, Choice 70.00-81, Good 56.00-70, Standard & Good 90-125 lbs. 44.00-52, 65-86 lbs. 30.00-44, Utility 45-70 lbs. 19.00-30. Farm Calves: Holstein Bulls 85-135 lbs. 60.00-75, few 78.00-90.

HOGS 445. Barrows and gilts \$2-\$3 higher. US No. 1-2 220-245 lbs. 51.50-53.35, No. 1-3 215-250 lbs. 50.50-52.60, No. 2-3 210-265 lbs. 48-

50.50, No. 1-3 175-200 lbs. 40.00-45. Sows steady. US No. 1-3 275-600 lbs. sows 34.50-40.50, few No. 2-3 335-470 lbs. 31.00-34. Boars 28.00-36.75.

FEEDER PIGS 65. US No. 1-3 30-40 lbs. feeder pigs 24.00-30, 40-50 lbs. 30.00-37 - all per head.

SHEEP 248. High Choice & Prime 90-110 lbs. spring slaughter lambs 65.00-79, 75-90 lbs. 75.00-82, one lot 93.00, one lot 55 lbs. at 90.00, Choice 45-85 lbs. 72.00-80, 90-115 lbs. 60.00-69, few Good 50-60 lbs. at 60.00. Slaughter ewes 8.00-24.00. **GOATS** 30: 15.00-31 per head.

Salute to the Dairy Industry

**TOP PRICES
FOR DOWN, CRIPPLED
AND AS IS
COWS, BULLS & STEERS**

**Slaughtered Under
Federal Inspection**

Paid On Dressed Weight

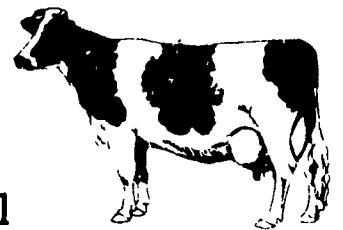
Tom Mulvaney
Livestock Trucking
(201) 454-4247

HANDLING:

Warren, Hunterdon, Sussex
And Somerset Counties, New Jersey

IN PENNA:

Northampton,
Bucks, Lehigh
And Parts Of
Carbon & Schuylkill
Counties



SWINE PRODUCTION SALES AND SERVICE

Complete Feeding
Programs and Services

Feeding Programs to
Meet Your Individual
Needs

Computerized
Record Keeping
System

Providing Veterinarian
Service

PA. Toll Free
1-800-468-5524



419 W. High Street
Elizabethtown, PA
17022

Supplying Farm Fresh
Feeder Pigs

Marketing and Hedging
Services

Marketing of Genesis
Breeding Stock

Developing Individual
Financial Programs

Direct Dial
(717) 367-1525

Feeder Pig Producers And Buyers

ATTENTION!

Now You Can Sell And Buy Your Feeder
Pigs Thru TELE-AUCTION

**NEXT FEEDER PIG TELE-AUCTION WILL BE HELD
TUES., JUNE 17th AT 1:00 P.M.**

• Phone Buyers Must Register By Noon Monday, June 16th

We Have Had A Great Response From Buyers Concerning
This New Method Of Marketing Feeder Pigs

Call Or Write For Details Of Feeder Pig Tele-Auction

WALTER M. DUNLAP & SONS, INC.

Lancaster Stockyards

(717) 397-5136

Lancaster, PA 17603