

## Public Auction Register

Closing Date Monday 5:00 P.M.  
of each week's publication

FRI. SEPT. 19 - 9AM Farm Eq. New Holland Sales Stables, Inc., New Holland, PA.

SAT. SEPT. 20 - 10 AM Hay Sale. On PA Rt. 24 between Stewartstown & New Park. York Co. Livestock Sales Ltd. Stan & Mary Nagle, Owners.

FRI. SEPT. 26 - 7PM New Saddle & Tack. Red Carpet Horse Sale, Cambria Co. Fairgrounds, Rt. 219N., Ebensburg, PA. K. Hines, C. Rowe.

SAT. SEPT. 27 - 12 Noon Catalog Registered Horse. Red Carpet Horse Sale, Cambria Co. Fairgrounds, Rt. 219N., Ebensburg, PA. K. Hines, C. Rowe.

SAT. SEPT. 27 - 11AM Horse Sale. Keister's Middleburg Auction, along Rt. 522, Middleburg, PA.

SAT. SEPT. 27 - 10AM Fall Heifer Sale. New Holland

Sales Stables, Inc., New Holland, PA.

SAT. SEPT. 27 - 10AM Flea Market On PA Rt. 24 between Stewartstown & New Park. York Co. Livestock Sales Ltd. Stan & Mary Nagle, Owners.

SUN. SEPT. 28 - 1PM Colonial World Class Sale '86. Location: Eastern National, MD State Fairgrounds, Timonium, MD. Sponsored by: Colonial Charolais Assoc. Managed by: Buzz Garey, Garey Cattle Sales.

### OCTOBER

WED. OCT. 1 - Annual Cow Show & Sale-Show 9:30AM; Sale 12 Noon. At the Belleville Livestock Mkt., Inc., Belleville, PA. Good Line of Registered & Grade Dairy Cattle.

FRI. OCT. 3 - 7PM New Saddle & Tack. Red

Carpet Horse Sale, Cambria Co. Fairgrounds, Rt. 219N., Ebensburg, PA. K. Hines, C. Rowe.

SAT. OCT. 4 - 9AM Used Tack, Harness & Equipment. Red Carpet Draft & Driving Horse Sale. Cambria Co. Fairgrounds, Rt. 219N., Ebensburg, PA. James Howard, Chris Rowe, Kevin Hines.

SAT. OCT. 4 - MD Polled Hereford Assoc. Red, White, Blue Sale Plus Club Calf Sale. At the Frederick Fairgrounds, Frederick, MD.

SAT. OCT. 4 - 10AM Hay Sale On PA Rt. 24 between Stewartstown & New Park. York Co. Livestock Sales Ltd. Stan & Mary Nagle, Owners.

FRI. OCT. 10 - 1:30PM PA State Graded Feeder Pigs. Carlisle Livestock Market, Exit 12 off I-81.

SAT. OCT. 11 - 10AM Flea Market On PA Rt. 24 between Stewartstown & New Park. York Co. Livestock Sales Ltd. Stan & Mary Nagle, Owners.

FRI. OCT. 17 - 6:30PM Feeder Pig & Feeder Cattle Sale. Keister's Middleburg Auction, along Rt. 522, Middleburg, PA.

SAT. OCT. 18 - 10AM Hay Sale On PA Rt. 24 between Stewartstown & New Park. York Co. Livestock Sales Ltd. Stan & Mary Nagle, Owners.

TUES. OCT. 21 - 11AM Complete Purebred Herd Dispersal located 5 mis. S of New Holland, 4 mis. E. of Intercourse, New Holland, RD 2. Terms by: J.S. Diener & Sons. Paul Snyder, Auct.

SAT. OCT. 25 - 11AM Horse Sale. Keister's Middleburg Auction, along Rt. 522, Middleburg, PA.

WED. OCT. 29 - 9AM Dairy Show & Sale. New Holland Sales Stables, Inc., New Holland, PA.

### NOVEMBER

SAT. NOV. 1 - 10AM Hay Sale On PA Rt. 24 between Stewartstown &

New Park. York Co Livestock Sales Ltd Stan & Mary Nagle, Owners.

FRI. NOV. 7 - 9AM Farm Eq. New Holland Sales Stables, Inc., New Holland, PA.

FRI. NOV. 14 - 1:30PM PA State Graded Feeder Pigs. Carlisle Livestock Market, Exit 12 off I-81.

FRI. NOV. 21 - 6:30PM Feeder Pig & Feeder Cattle Keister's Middleburg Auction, along Rt. 522, Middleburg, PA.

## Dairy and Livestock Sales

SAT. NOV. 29 - 11AM Horse Sale. Keister's Middleburg Auction, along Rt. 522, Middleburg, PA.

### DECEMBER

FRI. DEC. 12 - 1:30PM PA State Graded Feeder Pigs. Carlisle Livestock Market, Exit 12 Off I-81.

### DEALER IN ALL KINDS OF LIVESTOCK

Also Crippled & Down Cattle

### MARLIN S. IRWIN

Quarryville, PA  
PH. 717-786-3016

## HEIFER SALE

JUNE 17, 1986

7 P.M.



At Green Dragon Livestock Sale, 1 mi. North of Ephrata on State Street.

250-300 Head including purebreds and grades from calves to freshening age.

17 August & September freshening heifers. All vaccinated. Including fancy red & white holsteins from Lebanon Co.

100 head from Bob Kennedy. Big springing heifers due June, July, & August. Some purebred from some better herds in Washington, Butler & Erie Counties.

2 loads of New York heifers, all ages, some vaccinated. Some real nice groups of 300-500 lb. vaccinated heifers.

All consignments welcome. 30-day test on most heifers. Will receive heifers any time June 14, 15, 16.

Walter Risser,  
Proprietor

717-733-2444 (Office)  
717-838-4138 (Home)

## CONSIGNMENT SALE

### OF FEEDER PIGS & FEEDER CATTLE

FRIDAY, JUNE 20, 1986

at 6:30 P.M. Sharp

Held at Keister's Middleburg Auction Sales, Inc., Rt. 522, 3 miles east of Middleburg, PA., 5 miles west of Selinsgrove, PA.

Early consignments accepted  
Bring a load - buy a load

Owners:

**DON & WALT KEISTER**

For information call  
717-837-2222, 717-966-2856  
or 717-523-0360

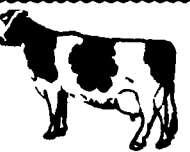
Terms: Cash

Auctioneers:

Bryan Imes & Ray Long

Restaurant Open

## SPECIAL DAIRY PROMOTION SALE



The Belleville Livestock Market and the Mifflin County Dairy Promotion Committee will hold a special day to promote the sale and use of dairy products.

Featuring:

- The top 30 cows from a local herd of 60 High Grade and Registered Holsteins
- One load northern cows, close springers or fresh
- Many local consignments

Milk promotion stand on the premises

Belleville Livestock Market

WEDNESDAY, JUNE 18th

Sale starts at 1:00 P.M.

NOTE: The cows from the herd were selected by the sale management, at the time of selection the herd was producing 60 pounds of milk per cow per day on an average. The 30 selected are all young cows that are springing, or recently fresh.

For More Information Call

(717) 667-2703

or (717) 935-2146

### SHORT NOTICE

## PUBLIC SALE

COMPLETE HOLSTEIN

DISPERSAL

DAIRY EQUIPMENT,

FEED, ETC.

THURSDAY, JUNE 26, 1986

At 11:00 A.M.

Sale being held due to health. Located in Adams County, PA by taking Route #194 1 1/2 miles South of East Berlin thence turning West onto Pine Run Road 2 miles to sale. (Sale signs posted)

38 - HIGH GRADE HOLSTEINS - 38

3 - RED AND WHITES - 3

30 Day Health Charts, Preg. Checked  
Herd consists of 28 cows milking and includes 2 Red & White, Half of herd fresh or close springers. Others due throughout year. 6 close springer heifers, including 1 red & white. Most of herd 1 to 3 calves. A very good productive herd with size, type & good udders. If you are looking for base milk plan to attend this sale. Herd sired by ABC Service.

DAIRY EQUIPMENT AND FEED

500 gal. Creamery package bulk tank, remote control; DeLaval glass pipe line for 30 cows; DeLaval milker pump, 4 units; SS wash vat; Cow clippers; Feed-12'x40' silo corn insulage, never opened.

TERMS: Cash or good check

Not responsible for accidents

**RAY E. MYERS &**

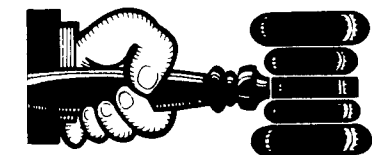
**MARY L. MYERS, Owners**

Phone: 717-624-8156

Clair R. Slaybaugh, Auctioneer #856L

Idaville, PA Phone: 717-677-7479

Phil Laughman & Tom Boyer Managers



## AUCTIONEER'S DIRECTORY

### WOLGEMUTH

AUCTIONEERS

R D #2 Manheim Pa

COMPLETE AUCTION SERVICE

CH

PH 717-665-5664

BOB

PH 717-665 6684

DENNIS

PH 717 627 0571

### NOTICE

To assure that your Public Sale appears in the Public Sale Section we must have your advertisement by 4 P.M. Tuesday of each week's publication

General Auctioneers - Specializing in Liquidation of Personal Property, Equipment, Antiques, Real Estate

**Reist**  
Auctioneers

Alfred G. Reist  
1050 Eden Road  
Lancaster,  
PA 17601

Licensed • Bonded  
Lancaster 717-569-2079  
Evenings/Lititz  
717-627-8008

### PROFESSIONAL Auctioneering

PAUL E. MARTIN  
R.D. 1, Box 553  
Stevens, Pa. 17578

JOHN D. STAUFFER  
217 Andrea Dr  
Lititz, Pa 17543

Complete Auction Service - We assist you and advise you from the planning stages of your auction to the completion of your auction

For A Consultation In Your Home Call  
Paul (717) 733 3511 - John (717) 665 5099

Licensed and Bonded

### Kreider & Kline Auctioneers

COMPLETE PROFESSIONAL AUCTION SERVICE  
REAL ESTATE - FARMS & RESIDENTIAL  
PERSONAL PROPERTY - ANTIQUES -  
FARM STOCK SALES - LIQUIDATIONS

RANDAL V. KLINE  
AUCTIONEER REALTOR  
717 733 1006  
717 569 8701

LLOYD H. KREIDER  
AUCTIONEER  
717 786 3394

ROY E. GOOD, JR.  
RD 1 BOX 151 A  
DENVER PA 17517  
215 445 4309

## TODD ACRES MILKING HERD DISPERSAL

Herd Being Dispersed Due To Health Reasons

Sale To Be Held At Shady Lane Dairy Sales, Quarryville, Pa.  
TUES. EVE., JUNE 24, 1986 - 7:30 P.M. DST

85 Registered Holsteins  
78 Cows - 7 Bred Heifers  
24 in 1st lactation - 21 in 2nd lactation  
Current Herd Average 15,900 3.97% 630

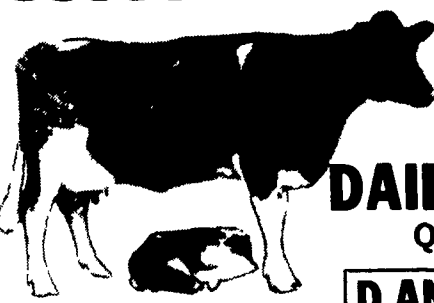
Popular Sires include: Jet Stream, Astronaut, Gemini, Mil-nor, Superior, Very and several Granddaughters of Elevation & Astronaut.

SALE MANAGER'S NOTE: This herd should equal or exceed their records for their new owners. This is a great opportunity for the profit minded dairymen.

Catalogs At Ring Side

Sale Manager & Auctioneer:  
REMSBURG SALES SERVICE  
Box 177  
Jefferson, MD 21755  
Phone: 301-473-8214  
Pa. Auct. Lic. #AU-002281-L

Owner: DONALD E. TODD  
Rt.2, Box 318  
Federalsburg, MD 21632



A NEW DIVISION OF

**SHADY LANE DAIRY SALES INC.**  
QUARRYVILLE, PA

### D AND D BULL BARN

Registered and Hi Grade Stock Bulls at all times, also we are interested in buying Stock Bulls at all times, all Bulls kept in individual pens. Registered and Hi Grades, Holsteins, Red-White Holsteins, Black Angus or Jerseys We have a good selection on hand right now

No Johne's Bulls please

Call anytime day or nite.

Glen Fite  
1-717-786-2750

David Fite  
1-717-786-1725

Henry S. Overly  
1-717-786-2378