



Livestock market and auction news

Virginia Cattle

Richmond, Virginia
Northern, Va.
Thurs., May 29 to
Wed., June 4, 1986
Report Supplied by VDA
Head Count: 3,160
Trend: Steady to 1.00 higher.
STEERS: Medium 1 300-500 lbs.
65.00-77.00; 500-700 lbs. 52.00-60.00;
700-1000 lbs. 48.50-60.00. Large 1
500-700 lbs. 55.50-64.00; 700-1000 lbs.
47.00-51.25. Small 1 300-500 lbs.
54.00-67.00; 500-700 lbs. 50.00-62.00;
700-1000 lbs. 47.50-50.75.
HEIFERS: Medium 1 300-500
lbs. 47.00-57.00; 500-700 lbs. 45.00-
54.50; 700-900 lbs. 44.50-45.75. Large
1 300-500 lbs. 45.50-53.00; 500-700
lbs. 45.50-54.25; 700-900 lbs. 44.00-
50.00. Small 1 300-500 lbs. 44.00-
51.50; 500-700 lbs. 43.50.
South & Southwest Va.
STEERS: Medium 1 300-500 lbs.
58.00-67.00; 500-700 lbs. 55.00-66.00;
700-900 lbs. 47.75-56.00. Large 1 300-

500 lbs. 62.00-73.00; 500-700 lbs.
57.50-66.00; 700-900 lbs. 52.00-54.50.
Small 1 300-500 lbs. 53.00-66.00; 500-
700 lbs. 47.50-60.50; 700-900 lbs.
52.25.
HEIFERS: Medium 1 300-500
lbs. 49.00-54.50, 500-700 lbs. 43.00-
53.00; 700-900 lbs. 46.25-47.00. Large
1 300-500 lbs. 48.50-56.00; 500-700
lbs. 48.50-54.00; 700-900 lbs. 42.00-
43.00. Small 1 300-500 lbs. 45.25-
53.50; 500-700 lbs. 41.50-51.00.

Shenandoah Valley Livestock

Harrisonburg, Va.
Saturday, May 31

Report supplied by auction
FEEDER CATTLE:
STEERS: M&L-1 300-500 lbs.
60.00-77.00; 500-700 lbs. 56.50-65.00;
700-1000 lbs. 49.00-54.50; Holstein
300-1000 lbs. 37.25-49.50. S-L&M&L-
2 300-500 lbs. 54.00-67.00; 500-700
lbs. 52.00-60.00.
FEEDER BULLS: M&L-1 300-

500 lbs. 56.00-60.50; 500-700 lbs.
51.50-57.00. S-L&M&L-2 300-500 lbs.
54.00-60.50; 500-700 lbs. 49.00-52.50.
HEIFERS: M&L-1 300-500 lbs.
48.00-53.00; 500-700 lbs. 44.00-51.00.
S-L&M&L-2 300-500 lbs. 44.00-51.50;
500-700 lbs. 43.50-48.00.
STOCK COWS: Beef 325.00-
425.00.
SLAUGHTER COWS: Utility &
Commercial 2-4 33.75-40.25;
Canner & Cutters 1-3 28.75-34.25.
SLAUGHTER BULLS: 1&2
40.25-46.50.
LAMBS: Blue O High Choice &
Prime 83.90; Red O Choice 76.25;
Feeder Lambs Choice 76.25;
Slaughter Ewes 19.00-29.00.
HOGS: Sows 1-3 36.50-41.25.
VEAL: Choice & Prime 78.00;
Good 65.50-70.00.
SLAUGHTER CALVES: Good &
Choice 54.00-59.00.

Four States Livestock

Hagerstown, Md.
Wednesday, June 4

Report supplied by Auction
SLAUGHTER: Fed Steers, \$1
Lower. Choice & Good 47.00-50.00;
Medium 43.00-46.00. Heifers, Good
44.00-46.00; Medium 40.00-43.00.
Cows, Very active, \$2 higher. High

Yield 39.00-42.00; Average 35.00-
38.00; Big Middle 30.00-34.00; Fatty
Herf. 29.00-34.00, Shelly 32.00-
Down. Fat Bulls, Steady. Good
44.00-45.50; Medium 40.00-43.00.
Veal Calves, \$2 higher. Choice
75.00-80.00; Good 65.00-74.00;
Medium 55.00-64.00; Farm Hfrs.
53.00-66.00; Farm Bulls 95.00-
113.00; Light Calves 43.00-53.00;
Weak Calves, 42.00-Down. Lambs,
Steady. Choice 71.00-73.50; Good
68.00-70.00; Medium 67.00-Down.
STOCKER: Steady to \$1 Lower.
Steers - 300-550 lbs.- Choice 57.00-
61.00; Good 53.00-56.00; Medium
49.00-52.00; Culls 48.00-Down.
Steers- 600-850 lbs.- Choice 53.00-
56.00; Good 49.00-52.00; Medium
48.00-Down. Heifers- (All
Weights)- Choice 49.00-52.00; Good
45.00-48.00; Medium 40.00-44.00.
Springing Heifers- to \$575.00. Pigs,
Hd. Steady to \$1 higher. 20-35 lbs.
18.00-32.00; 40-60 lbs. 33.00-44.50;
Shoats By Lb. 39.00-46.00.
Slaughter Hogs- No top hogs offered;
255-275 lbs. 46.75-48.75.
Sows- 350-400 lbs. 34.00-40.50. Bulls-
Choice 53.00-56.00; Good 49.00-
52.00; Medium 44.00-48.00.

bulls not well tested. Bulk of
receipts Monday with not enough
receipts balance of week for a
market test. Supply mainly good to
average choice slaughter steers
and heifers with 8% cows.
Estimated receipts this week
about 2100 as compared with
actual receipts of 1497 a week ago and
2147 a year ago.

SLAUGHTER STEERS: Choice
2-4, mostly 3 1050-1250 lbs. 54.00-
54.50, part load 55.00; 975-1050 lbs.
52.00-54.00. Choice, mostly 4 1150-
1300 lbs. 52.50-54.00. Mixed Good
and Choice 2-3 950-1150 lbs. 50.00-
52.50. Good 2-3 900-1100 lbs. 47.00-
50.00. Good and Choice 2-3
Holsteins 1250-1475 lbs. 46.00.

SLAUGHTER HEIFERS:
Choice 2-4, mostly 3 950-1150 lbs.
52.00-53.00; 875-950 lbs. 50.00-53.00.
Choice, mostly 4 1050-1200 lbs.
51.00-52.50 mixed good and choice
2-3 850-1050 lbs. 48.50-50.00. Good 2-
3 800-1000 lbs. 45.50-48.50.

COWS: Cutter and Boning Utility
1-3 33.50-37.00, few high dressing
37.00-39.00. Canner and low Cutter
30.00-34.00.

BULLS: Few YG 1-2 1530-1950
lbs. 47.00-50.50.

Peoria Cattle

Thursday, June 5

Report Supplied by USDA
Compared with last weeks close
slaughter steers and heifers 1.00 to
1.50 lower, except Holstein steers
steady. Cows weak to 1.00 lower,

• There are 730,000
cows in Pennsylvania
each producing an
average of 13,000 pounds
of milk annually.

Custom Liquid
Manure Hauling
3000 Gal. Tank
Truck
Lancaster &
York Counties

Don Groff
Holtwood, Pa
717/284-2580

LOUIS LYONS & SON

Consign your cattle and hogs, feeder pigs
& calves to Louis Lyons & Son. They offer
choice service, excellent sorting &
marketing of your livestock.

Charles Diller, Manager
Phone 717-394-7915
Burnell Siegrist - Buyer & Seller
Phone 717-626-8653

Experienced Personnel Immediate Weighing

WOOD SHAVINGS & SAW DUST MIX

- * Excellent Dairy Bedding
- * Trailer Load Quantities Delivered
- * Reasonably Priced
- * Continuous Year Round Supply

Call For Price
717-653-1085

Martin Grain
Mount Joy, PA

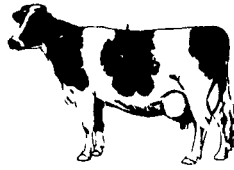
TOP PRICES FOR DOWN, CRIPPLED AND AS IS COWS, BULLS & STEERS

Slaughtered Under
Federal Inspection
Paid On Dressed Weight

Tom Mulvaney
Livestock Trucking
(201) 454-4247

HANDLING:
Warren, Hunterdon, Sussex
And Somerset Counties, New Jersey

IN PENNA:
Northampton,
Bucks And
Lehigh Counties



CORN HOGS CATTLE SOYBEANS

OPTIONS ARE AVAILABLE

COMMISSION \$50.00

Call for information

SPECIALIZING IN
COMMODITIES
EXCLUSIVELY

IN PENNSYLVANIA
CALL

(800) 322-9274

ALL OTHER AREAS

(800) 523-9388

ALLENTOWN

(215) 821-8111

Rosenthal & Company

2200 Hamilton Street,
Suite 102,
Allentown,
Penna. 18104
Members of All Principal
Commodities Exchanges

York County Livestock Sales Ltd.

P.O. BOX 243 • FAWN GROVE, PA 17321

(717) 993-2564

Saturday's Hay Sale Canceled Until
Further Notice

York County's Only Livestock Auction

On PA Route #24 between Stewartstown and
New Park

All Kinds of Livestock Sold on Commission
GWALTNEY OF SMITHFIELD

Open Every Monday - Hogs - 6:00 a.m. - 12 noon
Auction - 7:00 p.m. - ?

Buyers - Livestock Producers - Farmers
We Need & Appreciate Your Patronage

Stan & Mary Nagle - Owners
Home Phone: (215) 566-3239

WANTED TO BUY

PIK Certificates

Exchange now for cash.
Highest Prices Paid. Don't
wait until October and get
only 95%.

215-588-0047 Eves.

ATTENTION FARMERS

EVERY MONDAY
HATFIELD PACKING CO. and
MOYER PACKING CO.

Will Receive Your
Hogs and Cattle at the
DANVILLE LIVESTOCK MARKET

RD 4, Danville, PA

- We will receive your hogs from 8 AM to 12 Noon
every Monday. Your hogs will be weighed and
paid for immediately.
- We will also accept your sows & boars.
- Your cattle will be received from 12:30 to 5 P.M.
We will either pay you for your cattle immediately
or you may sell them dressed weight.
- There will not be a commission or yardage fee
deducted from your check.
- You may call our office Monday morning and we
will be able to tell you the base price for hogs for
the day.

MELVIN M. LEHMAN - Owner
Danville Buying Station
Phone: 717-275-2880

SWINE PRODUCTION SALES AND SERVICE

Complete Feeding
Programs and Services

Feeding Programs to
Meet Your Individual
Needs

Computerized
Record Keeping
System

Providing Veterinarian
Service

PA. Toll Free
1-800-468-5524



419 W. High Street
Elizabethtown, PA
17022

Supplying Farm Fresh
Feeder Pigs

Marketing and Hedging
Services

Marketing of Genesis
Breeding Stock

Developing Individual
Financial Programs

Direct Dial
(717) 367-1525

ATTENTION CATTLE FEEDERS

GRADED SALE

Friday, June 13th
11 AM

- 150 Head Local Acclimated Cattle.

Walter M. Dunlap and Sons

Lancaster Stockyards Tel. (717) 397-5136

An Old Line Commission Firm Keeping Abreast With The Times

