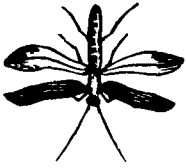


THE OLD FARMER'S ALMANAC

JUNE 9-15, 1986

Holy Toledo! — Who invented the mosquito?

Flag Day June 14 Average length of days for the week, 15 hours, 14 minutes
 General Winfield Scott, Mexican War hero, born June 13, 1786 First quarter of the moon June 15 (Sun) Father's Day June 15 Tornado in Worcester County, Mass., killed 90, caused \$53 million damage, June 9, 1953 He that has evil neighbors praises himself



Ask the Old Farmer: I have an old handpump near my house. Is there anything I should be doing to maintain it? It doesn't get much use, just when showing it off to a visitor. D.M., Woodbury, Conn.

A drop of oil now and then where handle and pump rod are pivoted will keep those parts from wearing down, and pumping water once in a while as you do will keep the flap valve from drying out.

Home Hints: To control fleas on your dog, try rubbing brewer's yeast on his coat.

OLD FARMER'S WEATHER FORECAST

New England: Beginning of week warm, showers north, midweek rainy and cool, end of week warm.

Greater New York-New Jersey: Week begins sunny, hot, and humid, midweek intermittent thundershowers with cool temperatures, end of week sunny and warm.

Middle Atlantic Coastal: Week begins sunny and hot, midweek rainy and cool, end of week showers with warm temperatures.

Piedmont & Southeast Coastal: Week begins clear and hot, mid through end of week thundershowers with cool temperatures.

Florida: Beginning of week showers, hot north, showers continue mid through end of week.

Upstate New York-Toronto & Montreal: Week begins rainy and cool, mid through end of week cloudy, rain central and east.

Greater Ohio Valley: Hot and humid with thundershowers at beginning of week, mid through end of week showers with warm temperatures.

(All Rights Reserved Yankee Publishing Incorporated Dublin NH 03444)

CRIPPLED AND DISABLED

Cows, Steers & Bulls For Slaughter Under USDA Inspection

Call Wayne Taylor
717-866-6289
215-286-9400

Lebanon, Berks, Lancaster & Chester Counties



Be Wise...
 Check our prices before you buy!!

SPRAY MATERIALS

We will deliver in the Delmarva area

- | | | |
|------------------|------------|-------------|
| * ATRAZINE | * BLADIX | * EXTRAZINE |
| * DUAL | * BANVEL | * LORSBAN |
| * LASSO | * LOROX | * FURADAN |
| * SUTAZINE | * PARAQUAT | * COUNTER |
| * ROUND UP | * PRINCEP | * DIFONATE |
| * LASSO-ATRAZINE | | |

SAVE ON BULK HERBICIDES

• BICEP • LASSO-ATRAZINE • PROWL

MELVIN R. WEAVER

2213 Leabrook Road, Lancaster, PA 17601
 Ph: 717-569-6576 or 898-8354

Greencastle Livestock

Greencastle, Pa.
 Monday, June 2

CATTLE 529. SLAUGHTER STEERS: Choice & Prime 52.00-55.00, few to 56.35; Good & Choice 48.50-53.00; Good & Choice-Holstein 46.00-50.50; Standard & Good Holstein-41.00-46.50.

SLAUGHTER HEIFERS: Choice 53.00-54.50, few to 57.00; Good & Choice 50.00-54.00; Standard & Good 44.00-50.75.

COWS: Utility & Commercial 36.00-40.00, few to 42.50; Cutter & Boning Utility 35.00-40.25; Canner & Low Cutter 35.00 & down.

BULLS-ALL WEIGHTS: Yield Grade 1 46.50-51.00, few to 52.75; Yield Grade 2 42.00-47.00.

STOCKER CATTLE--ALL WEIGHTS. Steers-Medium & Good 53.00-63.00; Heifers-Medium & Good 45.00-54.00; Bulls-Medium & Good 40.00-50.50; Steers-Holstein 39.50-45.00.

CALVES 422. Good & Choice-125 to 250 pounds 70.00-90.00, few to 100.00; Medium & Good-125 to 250 pounds 58.00-75.00; Medium & Good-80 to 120 pounds 52.00-60.00; Light & Cull-all weights 53.00 & down; Holstein Bulls-return to farm up to 135.00; Holstein Heifers-return to farm up to 67.00.

LAMBS, SHEEP & GOATS 137. Choice Lambs 77.00-84.50; Medium & Good Lambs 68.00-77.00; Light & Cull Lambs 50.00-68.00; Sheep, Ewes & Bucks 19.00-27.00; Goats-all sizes (by head) 10.00-54.00.

HOGS 116. No. 1-3 Butcher Hogs-190-225 pounds 48.00-49.00; No. 1-3 Butcher Hogs-225-250 pounds 47.00-49.00; No. 1-3 Butcher Hogs-250-300 pounds 44.00-47.00; Good Butcher Sows-400 pounds down, up to 41.50; Good Butcher Sows-400 pounds up, up to 42.50; Heavy Boars-over 300 pounds 33.00-35.25; Pigs-all sizes (by head) 19.00-35.00.

Sale every Monday evening at 5:00 p.m.; Hay & straw sale every Monday at 1:00 p.m.

New Holland Horses

New Holland Sales Stables
 New Holland, PA

Monday, June 2, 1986

Report supplied by auction

Reported receipts of 290 head of horses, mules and ponies.

Market: lower.

Better Horses 550.00-710.00.

Driving Horses 270.00-900.00.

Riding Horses 225.00-450.00.

Lightweight Killers 180.00-300.00.

Heavyweight Killers 360.00-480.00.

Mare Ponies 30.00-70.00.

Colts 20.00-30.00.

Gelding Ponies 30.00-70.00.

Larger Ponies 100.00-150.00.

D & H Cattle Transport

Local and Long Distance Hauling
 With A 24 Ft. Gooseneck Trailer

Call Don At
717/284-2580
 Lancaster, Pa.

48% Soybean Meal, **\$206.00**
 44% Soybean Meal, **\$197.00**
 Distillers Grains, **\$157.00**

Per Ton — Delivered

EVEN LOWER PRICES FOR LARGER QUANTITIES.

Buy up to 11 tons and save more! No extra charge to blend these ingredients

NOTE We can sell for less because we sell only to people who pay promptly

WALKER COMPANY

Gap, PA 17527

717-442-4169 (Collect)

TIME CHANGE

CHAMBERSBURG LIVESTOCK SALES, INC.

I-81, Exit 5, Wayne Ave., Chambersburg, PA. — 717-263-9251.

REGULAR LIVESTOCK SALE THURSDAY, 1 P.M.

Steers sold in individual lots. 4 PM

HAY SALE — ALL YEAR

THURSDAY, 11 A.M.

HORSE SALE

4th Saturday of each month at 6:30 P.M.

ANTIQUE SALE

1st & 3rd Monday of each month 3:30 P.M.

The best price means competition the auction way.

ATTENTION FARMERS

The New Way To Market Your Livestock

HATFIELD PACKING CO. AND MOYER PACKING CO.
 Will Receive Hogs Will Receive Cattle

At The

BLAIR-BEDFORD BUYING STATION
 RD 1 Martinsburg, Pa.

MONDAYS - Hogs 8 AM to 11:30 AM
 Cattle & Calves 8 AM to 3 PM

THURSDAYS - Cattle & Calves 8 AM to 3 PM

- No commission or yardage fees deducted from check
- Livestock weighed and paid for immediately
- You may call our office sale day for prices

DALE R. HOOVER - Owner

Business 814-793-3077
 Residence 814-793-2657



Let DEKALB'S Genetics And Trained Salespeople Work For You.

FOR MORE INFORMATION CONTACT



John Reiningger
 Akron, PA
 Phone 717-859-4214

FRIDAY, JULY 4 ON THE FARM MONTHLY BRED GILT SALE

Sale to Start Promptly Every 4 Weeks at 7:30 P.M.

Located 18 miles south of Lancaster, Pa., 6 miles south of Quarryville, take Rt. 272 to Little Britain, turn north, follow Little Britain Road to Jackson Road, right. 2nd farm, OR take Rt. 222, out of Quarryville to Cedar Hill Road to Little Britain Road to Jackson Road, left. Watch for sale arrows.

50 to 60 Head WHITE DIAMOND GILTS
 Here Now a new cross again. Large White & Landrace, first generation true F-1 gilts. Parent stock originated from Lieske Bros. Minnesota. Very productive in litter size and feed conversion.

Vaccinated for Lepto, Erysipias, Rhinitis, E'Coli, Pasteurella

Hand mated with Breeding Dates

Local Trucker Available
 No Hogs Sold On Commission

JOHN B. STOLTZFUS
 R.D. 1, Kirkwood, Pa
 Abe Diffenbach, Auctioneer AU225L

NEXT SALE DATE AUGUST 1