

Farmers' Auction Hay

Duncansville, PA
Monday, June 2, 1986
Report supplied by auction
9 Loads Hay.
Mixed Hay 45.00-52.00; Clover (1 load) 62.00; Straw (1 load) 52.50.

Keister's Hay & Straw

Keister's Middleburg Auction
Tuesday, June 3
Report supplied by auction
19 loads Hay. Mixed Hay, 45.00-77.50; 3 loads Straw, 37.50-50.00; 7 loads Ear Corn, 70.00-76.00; Corn Fodder, 32.00; Oats, 1.25 bu.

Carroll Co. Hay

Westminster, Md.
Tuesday, June 3, 1986
Report supplied by auction
10 loads.
Alfalfa, 60.00-71.00; Timothy, 1.35-1.55 bale; Alfalfa Orchard Grass mix, 65.00; other Mixed Hay, 63.00; Timothy & Clover, 1.00 bale; Straw, 67.00-81.00, 1.25 bale.

Leinbach's Hay

Shippensburg, PA
Tuesday, June 3, 1986
Report supplied by Auction
Locust Posts, .70; Alfalfa, 50.00-70.00; Mixed Hay, 46.00-65.00; Straw, 60.00-70.00; Ear Corn, 65.00-75.00.

Dewart Hay

Dewart, PA.
Monday, June 2, 1986
Report Supplied by Auction
Hay, 32.00-57.00; Straw, 34.00-47.00; Corn, 67.00-72.00.

Frederick Livestock

Monday, June 2, 1986
Butcher Cows Mostly Steady Prices. Good 37.50-40.00; Standard & Utility 33.00-37.00; Cannors 28.00-32.00; Shelly 30.00-Down.
BULLS: Good 44.00-45.25. Steers: Good 48.00-51.00.
BUTCHER HOGS: Steady to 25 cents higher. 220-240 lbs. 47.00-48.50; 190-205 lbs. 46.00-46.25.
SOWS: 450-680 lbs. 35.25-39.50, THIN SOWS: 30.00-34.00.

VEAL CALVES: Steady Prices. Good 65.00-75.00; Standard 60.00-64.00; Stocky & Thin 53.00-59.00; Light Calves 43.00-50.00; Weak & Rough 42.00-Down.

CALVES RETURNING TO FARM: Very Active - Steady Prices.

HOLSTEIN HEIFERS: 90-120 lbs. 50.00-59.00.

HOLSTEIN BULLS: 90-100 lbs. 85.00-105.00; 105-125 lbs. 100.00-118.00.

LAMBS: Good & Choice 63.00-72.00; Medium 58.00-62.00.

STOCK CATTLE: Steady to 1.00 Lower. Steers Good 55.00-60.50; Medium 50.00-54.00. Heifers Medium to Good 37.00-42.00. Bulls Medium to Good 45.00-50.00; Springing Heifers Up To 760.00.

PIGS & SHOATS: Strong Demand. By The Head 40-60 lbs. 35.00-43.00; 20-35 lbs. 23.00-34.00. By The Lb. 41.00-48.00.

Oklahoma Cattle

Wednesday, June 4
Report Supplied by USDA
Cattle and Calves: Est. 2100.
Auction Sales Totaled 1197 head. Same Day Last Week: 2437.
Feeder steers steady to weak. Feeder heifers weak to 1.00 lower. Demand good for those feeders suitable for grazing. Demand fair for feedlot steers. Demand light for feedlot heifers. Slaughter cows steady to 50 cents higher. Bull trends not established. Demand good for the limited offering of slaughter cattle. Bulk supply medium frame 1 and mixed 1-2 500-850 lb. steers, numerous lots between 700-800#. Modest showing 500-750 lb. heifers. Cows near 5 percent of estimate.
FEEDER STEERS: Medium few large frame 1 535 lb. 63.00; 625-700 lb. 50.00-54.25; 700-800 lb. 48.90-51.50; 800-850 lb. 49.00-51.50; Lot 955 lb. 45.60.

Medium and large frame mixed 1-2 400-450 lb. 63.00-66.00; 500-550 lb. thin 59.00-66.00, other 500-600 lb. 54.00-56.50; 600-650 lb. 50.50-54.50; 700-800 lb. 48.10-50.50; 800-850 lb. 47.10-49.00; 950 lb. 45.30.

FEEDER HEIFERS: Medium frame 1 635-725 lb. 45.90-47.00.

Medium and large frame mixed 1-2 465-490 lb. 53.25; 575-650 lb. 45.30-47.50; 740-750 lb. 44.25-45.10.

SLAUGHTER COWS: Cutter and boning utility 1-2 35.00-39.10. Canner and low cutter 1100-1235 lb. holsteins 33.40-34.25.

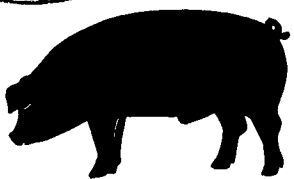
SLAUGHTER BULLS: YG 1 1525 lb. pkg. 46.75.

REPLACEMENT OR FEEDER COWS: Small thru large frame 2 young 36.50-39.00.

For The Week: Feeder steers steady. Feeder heifers steady to 50 cents higher on those headed to the feedlots; 1.00-1.50 higher on those suitable for grazing purposes. Slaughter cows closing steady. Slaughter bulls fully steady.



GWALTNEY of SMITHFIELD, LTD.



RECEIVING HOGS:

LANCASTER COUNTY FARMERS

THURSDAYS: B & R Cattle, Marietta
717-426-3258

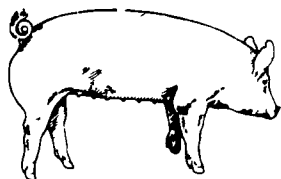
Please call for special arrangements for other days.

YORK COUNTY FARMERS

MONDAYS: Stewartstown
717-993-2564

TUESDAYS: Thomasville
717-792-2248 or 9836

Contact for information:
Ed Herrmann, 717-284-3203
or Charlie Kauffman, 215-593-5674
Future forward contracts available



EMERY'S BUYING STATION

OPEN TO RECEIVE YOUR MARKET HOGS

AT THE GREEN DRAGON MARKET
RD 4, EPHRATA, PA 17522
1 MILE NORTH OF EPHRATA
ON NORTH STATE STREET.

HOURS: MONDAY, TUESDAY, and
WEDNESDAY 6:00 A.M. to 11:30 A.M.
215-458-5677 Residence
717-733-9648 Office

YOU ARE PAID FOR YOUR HOGS IMMEDIATELY

Ken & Lois Emery, Proprietors

Green Dragon Livestock Sales

Location: Ephrata RD 4. 1 mile N. on North State St., Ephrata.

COWS COWS COWS SALE EVERY FRIDAY

Lots of good Northern Feeder & Stockers. Slaughter Cows - Bull Steer, Veal-lamb.

11:00 A.M.-Beef Sale 200-300 each week.

1:00 P.M.-Dairy Sale.

7:00 P.M.-Small Animal Sale.

For Special Sales and Herd Dispersals on farm or at our barn or other market information call: Office 717-733-2444, Home 717-838-4318.

WALTER H. RISSER, Proprietor

All out of state and new buyers must have cash or certified check or current letter of credit from bank.

HAY & STRAW SALE

12:00 Noon

Every Wednesday
Westend of Avondale
at the intersection of
Baltimore Pike and
Route 41.

Harvey Z. Martin
215-268-3604
(Office)
215-445-5303
(Residence)

KING'S AUCTION

KIRKWOOD

Hay, Straw and
Grain Auction
EVERY TUESDAY

12:00

Located Rt. 472 5 miles south
of Quarryville or 6 miles north of
Oxford at Shaub's Auction
House

Lloyd H. Kreider,
Auctioneer
AU-000513L

No out of state checks
ALL TRUCKERS AND
FARMERS WELCOME

MELHORN SALES, SERVICE, TRUCKING CO.

1010 W. Main St., Mount Joy, PA 17552

The only full service company, in this area, to handle the total needs of the poultrymen.

Which Includes:

- Area distributor of a complete line of Bio-Lab Poultry & Swine sanitation products. Including: sow shampoo, field disinfectants, hatchery disinfectants, egg wash.
- DEKALB chicks & started pullets sold by Clay Mumma, Nelson Groff & Harold Mishler.
- Complete loading & unloading of pullets & spent hens.
- New modern dollie equipment to move your pullets fast and efficiently with minimum stress to the pullets.

*Place Your Confidence In A Full Service Company That
Wants To Be Worthy Of Your Business*



For More Information Phone:
717-653-1102
Monday - Friday 8:30 AM - 4:00 PM

