

CURRIER COMPLETE FARM DISPERSAL

SATURDAY, JUNE 14, 1986

12:00 Noon Sharp!
Andrews Settlement,
(Potter Co.) Pennsylvania

Sale at the farm on Rte. 244 between Genesee, PA and Millport, PA (Watch for auction signs on Rte. 49 at Colesburg or at Rte. 499-244 intersection on Main Street in Genesee, PA).

Farm sold, completely dispersing the following personal property:

33 Interstate Tested Holsteins, including 27 mature cows, 4 close up at sale time, balance recently fresh. 5 heifers due this fall to a Jersey and 1 open yearling. These cattle are a young group, receiving no protein feed. They will respond wherever they go! Pregnancy examined, charts sale day!

Machinery: AC 185 diesel tractor, 1600 hrs.; AC 170 gas, rebuilt motor 500 hrs.; AC D-14 gas with NI loader and blade, sells complete; NH 489 haybine; NH 718 chopper, 1-row corn and pick-up heads; NH 25 blower; NH 513 spreader with hyd. end gate; 2 NH 40 ft. skeleton elevators; NH 275 baler with kicker; NH rake; Gehl 610 unloading wagon; 2 kicker wagons; 3 pt. cultivator; AC 10 ft. transport disc; AC 4-16 semi-mt. plow; AC 770 4-row corn planter; 1972 Dodge 300 with 12 ft. flat bed and twin cylinder hoist; Cross elevator; NI fertilizer spreader.

Barn and Milkhouse: Mueller 500 gal. (4534 lb.) bulk tank with extra large Kopeland compressor; Kesco "R" milk mover dumping station; Starline gear drive 16 ft. silo unloader with 7 1/2 h.p. motor; Starline 18 ft. unloader, no motor; 4 Surge milkers; 24" barn fan; Small animal scale shute combination with headgate; Boumatic vacuum pump with 1 h.p. motor; Universal 3 h.p. vacuum pump; Winpower 45/25 p.t.o. alternator on custom cart.

Machinery has been housed and is field ready!
Terms: Cash or honorable check sale day!

Owned by
MR. AND MRS. JERRY CURRIER
814-228-3264

Auction conducted by
PIRRUNG AUCTIONEERS, INC.
Wayland, NY 716-728-2520
Ulysses, PA 814-848-7421
PA License #'s 001646L and 001672L
Lunch Available!

ABSOLUTE AUCTION

NEW & USED TRACTOR AND EQUIPMENT PARTS
KEENER EQUIPMENT INC.

LOCATION: At intersection of Rts. 283 & 72 - 1531 Manheim Pike, Lancaster, Pa.

JUNE 10, 1986
5:30 P.M.

Starters, generators, water pumps, top links, drawbars, mufflers, pulleys, heads, manifolds, oil filters, cultivator shovels, plow shears, packer wheels, disk blades, sickle mower knives and much more.

JUNE 25, 1986

9:30 A.M.
NEW & USED PARTS —
MOTORS, ETC.

RUNNING TRACTORS:

1850 Oliver, 4000 Ford with loader boom, 3020 John Deere, International Super A, Jubilee Ford 933 Caterpillar, Crawler.

TRACTORS FOR PARTS:

INTERNATIONAL: A V, C, H'S, 300, 350, 400, 460, 606.

JOHN DEERE: B'S, A'S 50, 60, 3010.

FORD: 9N, 8N, Jubilee, 6000, 1801.

ALLIS CHALMERS: C'S, WC'S.

CASE: 1030, VAC.

OLIVER: 70'S, 1800.

Forklift, Payloader, Uniloader.

EQUIPMENT:

Wagons, cultipacker, disks, blades, buckets, loaders, 3 pt. tool bars, wheel weights, tire rims, cultivators, plows- 3 and 4 bottom 3 pt., 2 pt. and fast coupler AC.

KEENER EQUIPMENT INC.
PH. 717-569-9861

AUCTS.:

C.H. Wolgemuth & Son
717-665-5664, Lic. #1036

Blaine Rentzel
717-764-6412, Lic. #761

SOME ITEMS MAY BE ADDED OR DELETED DUE TO DAILY BUSINESS.

Public Auction Register

Closing Date Monday 5:00 P.M.
of each week's publication

PUBLIC SALE

SAT., JUNE 14, 1986 AT 9:30 A.M.

LOCATION: On Rt 83, going South get off at Exit 13 Newberrytown Left at stop sign thru Newberrytown 1 mile, right on Sheepbridge Rd 1/2 mile to sale "sale arrows & sign posted"

ANTIQUES - HOUSEHOLD: 3 dry sinks, 2 oak dressers w/mirrors, 2 oak rockers, oak commode, 2 oak stands, doughtray, library table, plank high chair, oak clothes tree, 6 boot jack plank chairs, camel trunk, floor radio, 3-8 day mantle clocks, oak ext table, trunks, single rope bed; kerosene lamps, copper wash boiler, b/w TV, wash bowl & pitcher Dated-wire top jars, occupied Japan pcs, 24 + 1 gal crocks, 16 + jugs, Cowden Wilcox pcs, butterbowl, cherry seeder, coffee grinder, flat irons, antique dishes, china, pattern-press glass, depression pcs, 6 Hall bowls, slaw bd, old toys, tin-woodware, slaw cutter w/box, wood measures, hayknife, cookie cutters, books, pots-pans, utensils, cooking wares, pitchers, tumblers, skillets, roasters, steelyards, wood egg crate, metal egg baskets, single-dbl trees, poultry waters, hand pump, lanterns, flour jar, 2 happy tumblers, bowls, other household Lots of small antique collectibles

BUTCHER TOOLS: 4 lge iron kettles, 3 butcher furnaces, Butcher Boy ele meat band saw, "Butcher Boy elec saw port for down backbone cutting," comm elec meat grinder, 2 meat benches, scalding trough, butcher meat block, meat hooks, 4 small meat grinders, 2 sets steelyard scales, block-fall, 1/2 ton chain hoist, stirrers, lge-small alum kettles, pans, saw, scrappers, knives, other butcher tools, laddles-dippers-forks, etc

TRACTOR-IMPLEMENTS-RIDING MOWER: John Deere model B tractor w/cultivators, good rubber o'k, hay wagon w/racks, 14 h p economy riding mower w/5' mower also, blade-trailer o'k, 1/4 yd cement mixer, David Bradley tractor w/ attachments, Sears 16" chainsaw, 1 horse wagon, 2 row corn planter pull type, 1 horse 5' mower, 1 horse plow, 1 horse hay rake, 1 horse Dixie weeder, 1 horse harrow, 1 horse grain drill, bottom plow, circular saw, manure spreader, 1 horse corn planter, goat wagon, union cutter grain mill w/crusher o'k, 2 corn shellers, 4 iron hog troughs, platform scales, elec table saw, grinds-tone, sets horse harness-Sears, lge wood feedbox, log chains, 2 cant hooks, wagon wheels, wagon seat, wood sheaf fork, wood chicken crates, 5 grain cradles, wagon jack, 2 horse collars, belts, bucksaws, 1-2 man saws, seeder, 40' wood dbl ladder, berry boxes, Model A parts, also small hand tools, garden tools, nuts-bolts-nails, rope & many other small items, scrap-junk-box lots

GUNS 12 P.M.: Win mod 12 12 Ga N S Fc Bbl, Win Mod 42, 410 gauge, Win Mod 43, 218 Bee w/scope, Fox Sterlingworth 12 ga Dbl Bbl, Rem Mod 591 5mm, rifle, old Rem pump 30 cal rifle, old Rem pump 22 cal w/oct bbl, Stevens 22 cal pump rifle, antique 22 cal rifle w/oct bbl, Ranger Model 34 22 single shot, J Stevens 22 cal single shot rifle, 2 boxes 5mm ammo other ammo

SALE ORDER: Antiques & household sold first, then butcher tools & farm pcs, Sale due to retiring, 45 year accumulation TERMS: Cash; Lunch reserved, Not responsible for accidents

OSCAR J. TAYLOR, Owner

Taylor-Bricker, Auctioneers
AU1970-L, AU094-L

THURS. AUG. 21 - Elverson, PA. Wilmer and Mark Kraybill Dispersal. Leon Kurtz, Auct. Dale Hoover, Pedigrees, Lebanon, PA, Mgrs.

SAT. AUG. 23 - 10AM Hay Sale on PA Rt. 24 between Stewartstown & New Park. York Co. Livestock Sales Ltd. Stan & Mary Nagle, Owners.

FRI. AUG. 29 - 7:00 Lebanon Co. Holstein Club, 50 head holsteins, Lebanon Area Fairgrounds. Harry H. Bachman, Auct.

SAT. AUG. 30 - 11AM Horse Sale Keister's Middleburg Auction, along Rt. 522, Middleburg, PA.

SAT. AUG. 30 - 10AM Flea Market on PA Rt. 24 between Stewartstown & New Park. York Co. Livestock Sales, Ltd. Stan & Mary Nagle, Owners.

SEPTEMBER

MON. SEPT. 1 - 9AM Farmersville Auction, Farmersville, 3 mis. E. of Brownstown, Lanc. Co., PA.

FRI. SEPT. 5 - 7PM Horse Sale. New Holland Sales Stables, Inc., New Holland, PA.

FRI. SEPT. 5 - 5:30PM Gap Auction, Antiques & HH sold at every auction Located off Rt. 41, Lancaster Turkey Hill Minit Mkt., cross RR bridge. Ira Stoltzfus & Son, Aucts.

FRI. SEPT. 5 - 9AM Fall Consignment Sale of All Kinds of Farm Mach. & Tools. At the Belleville Livestock Mkt., Belleville, PA. Belleville Livestock Mkt., Inc.

SAT. SEPT. 6 - 10AM Hay Sale. On PA Rt. 24 between Stewartstown & New Park. York Co. Livestock Sales Ltd. Stan & Mary Nagle, Owners.

MON. SEPT. 8 - Lebanon Valley Auction Co. Fall Machinery Auction. Lebanon Area Fairgrounds, Lebanon, PA. Harry H. Bachman, Auct.

FRI. SEPT. 12 - 1:30PM PA State Graded Feeder Pigs. Carlisle Livestock Market, Exit 12 off I-81.

SAT. SEPT. 13 - 10AM Flea Market. ON PA Rt. 24 between Stewartstown & New Park. York Co. Livestock Sales Ltd. Stan & Mary Nagle, Owners.

FRI. SEPT. 19 - 7:30PM Disaster Relief Heifer Auction. Sponsored by the Church of the Brethren at the Lebanon Area Fairgrounds. Clair Kreider, Mgr., 717-464-5033.

ZAHN ROTH FARM FRIDAY, JUNE 20, 1986

8:00 p.m. DST

Complete Reg. & Grade Milking Herd
Bred and Open Heifer Dispersals- 20 Reg.

For Nick and Nancy Sattazahn - Berks Co. Certified and Accredited.
To be held at Smoketown Quality Dairy Sales, Smoketown, PA.

Several cow families in this herd. Good rough bone herd of cows never pushed for high production. Cows Avg. 52 lbs. per day. Several cows milking 70-80 lbs. D.H.I.A. Bred Sire Power A.I. Nine Heifers from 9 mo. to 1 mo. old. 1st & 2nd calf Heifer's milking 45-55 lbs. per day. Cows due June & July - 10 cows due Aug. - Oct. - Nov.

Sires Represented:
Also Bred to A.I. Bulls

Wagnercrest Ivanhoe Astronaut
Ransom-Rail Pacemaker
Dutch-Croft Fury Lad
Milu-Betty Ivanhoe Chief
Hill Haven Standout Job
Pencor G. Ivanhoe Pabst- and others.

Fresh 5-11-86 60 lbs.
Reg. - Back-Meadows Astronaut-Mosie-
Due Sept.

4-3 305 18,491 509
322 18,712 519
5-3 305 18,017 628
6-4 270 18,396 598

Reg. - ZANN Croft Penstate Pete -
Fresh 65 lbs. 3-23-86.

3-6 305 18,150 601
326 18,748 623
4-6 305 17,906 633
5-6 185 12,142 418 Inc.

Reg. - Park-Forest Elevation Astro.

Born 1-11-81.
2-0 305 11,216 4.0 447
3-1 299 10,718 4.1 442
4-0 305 11,788 3.9 460

Her heifer calf- sells - born 5-11-86.
Sire- Pond OAK Rendezvous

Selling:

Reg. - Shardale Arlinda Chief Jemini
Born 7-22-81.

Cow Index +545m. +26F.
2-3 305 19,180m. 3.6% 692F.
365 21,110m. 3.6% 751F.
3-6 305 17,498m. 3.7% 650F.
2.9% 514P.
365 19,569m. 3.7% 729F.
3.0% 586P.

Dam- Paclamar Bootmaker- V.G. 85.

2-2 312 16,140 3.6 588.
3-3 305 18,910 3.6 674.
365 21,160 3.6 762.
4-5 305 23,150 3.4 798.
365 25,610 3.5 887.

6th Generation V.G. or Ex

Gr. Dam:

Lifetime 161,980 3.9 6,384.

Sale Managed by
SMOKETOWN QUALITY DAIRY SALES
Gordon & Helen Fritz
(717) 393-0930

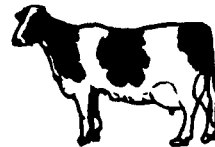
More Details Next Issue

EVENING DAIRY COW SALE

THURS. EVE., JUNE 12, 1986
7:30 P.M.

Selling at Kling's Sale Barn, located 15 miles North of Carlisle, on rt. 74, 2 1/2 miles N.E. of Landisburg, Perry Co., Pa.

75 HOLSTEINS 75



25 Canadian Reg. Animals - all 1st & 2nd calf - All just fresh or very close to calving. Sires include- Warden, Butlerview Matador, Marlin, Cittamatt, Kemp, Jonathon, Lancer. Several bred to Kay Elevator & Sidney.

Records on some of these cattle - Anyone would like these nice young animals!

Also selling 5 fresh heifers from Henry-Acres, Port Royal, Pa. Plus 2 breeding-age stock bulls.

A Dairy of 35 Top Grade Cows & Heifers from Adams Co. - Tie-stall cows averaging 55 lb. of milk per cow. Good Udders & Feet - A.I. bred & Sired. Several just fresh - Several top Fall Cows.

Reason for selling - Owner is retiring.

"Good, Good Dairy of Cows."

Selling at 7:00 - 6x12 Moritz Gooseneck Tractor, 6x24 M&H Gooseneck Tractor (Both in Good Shape).

Sale Managed By-
KLING'S AUCTION SERVICE
Landisburg, Pa.
717 789-3883 Lic. #500