

COLUMBIA COUNTY DHIA

		April, 1986			
Shultz Bros	3	72.9	89.4	19,647	784
Frank L Jurbala	3	44.7	84.9	20,698	756
Hunter Crest Farm	3	39.0	87.8	21,017	745
Ruchard Kriebel	B3	49.9	90.3	19,685	731
John W Turofski	G3	32.0	85.0	20,017	713
Robert C Bronson	3	64.1	86.3	20,563	*695
Duane E Shuman	3	29.5	85.8	19,034	684
Richard Kriebel	2	14.4	87.6	13,755	662
Lyons Den Dairy					
Bunny	3	4-5	305	23,342	3 4 786
Tara	3	3-2	305	19,799	4 1 805
Shultz Bros					
20	3	5-9	305	22,219	3 7 814
24	3	3-2	305	22,049	3 8 828
Robert C Bronson					
Gracios	3	5-0	305*	24,474	3 4 832
Pen Col Farms					
Delight	3	6-4	305	25,538	4 2 1067
#Debra	3	1-10	305	20,980	3 9 819
#Alice	3	1-11	305	20,528	3 8 784
#Sdent	3	1-11	305	19,791	4 2 827
Frank L Jurbala					
Audrey	3	2-4	305	19,621	4 0 790
J Robert Book					
114	3	4-0	305	19,375	4 0 783
Richard Yule					
Silk	3	5-7	305	24,847	3 1 776
Donald J Bowman					
101	3	2-3	305	24,597	3 1 767

MAILBOX MARKET FOR SALE

7 year old TBx mare, pretty bay w/white, sound; TB Colt at side. Sell together or separate. 717-786-8638

12'x24' Agstar building fans, self contained pit, good condition; AKC German Shepherd Stud Service available. Lanc. Co. 717-665-7765

Land cleared 32 also 10 acres Township Rd., school, mail route, water, stream. Indiana Co. 412-254-2406

General Electric hot water heater, \$25.; 12' flat bed trailer, ball hitch, 2 wheels, \$200. Berks. 215-286-9778

Gas fired incinerator. Also cream separator for parts. Christ Stoltzfus, R.D.2, Box 784, Newmanstown, Pa. 17073.

JD 2 row corn planter, \$300.; 2 row transplanter, \$250.; IH 1 row corn picker, \$350.; Mulch Hay, \$40. Leb. Co. 717-865-5978

1 Tom, 2 Hens Bronze Turkeys, \$25.; Black and tan Coon Hound pups, parents excellent hunters, \$50. each. Berks. 215-582-5761

Massey Harris Clipper #50 combine, pull type, like new canvass, running condition, \$250. Berks Co. 215-582-8076

Oliver Superior grain drill, \$250.; 2nd Oliver Superior grain drill for parts, \$50. Hagerstown, MD. 301-582-2845

Kawasaki 1982 KD80 motorcycle, used very little, excellent condition, \$300. White Hall, MD. Near MD/PA line. 301-343-0026

2 row quick hitch rear mount cultivator, IHC, \$300. Montg. Co. 215-754-7316

Chestnut Mare, 9 years old, 14 1/2 hands, rides Western, gentle, exc disposition, \$500. Saddle available. Gloucester Co. 609-881-6371

Chain hoist 1/2 ton, good condition, \$45.; White Mountain ice cream freezers, old hand crank, most sizes. Lanc. Co. 215-267-7049

Reg. Arabian mare, 2 years, 15 hands, sweet disposition, is green broke, \$9,500. Firm. NJ. 201-753-5353 after 5 p.m.

Double pony harness w/Hames collars, \$250.; Single pony harness, \$80.; Wooden, aluminum and brass Hames pony. Lebanon, Pa. 717-272-6819

MF 165 diesel, remote hydraulics, rebuilt multi power, \$3,600. Lanc. Co. 717-738-1274

Outdoor toilet w/shingle roof, 4 1/2' x 4 1/2', good shape, \$55. York Co. 717-755-1187

MF 13' quick tach grain head w/pickup reel, \$500.; NH 281 baler, \$650.; NH 23 blower, \$75. B.O. 717-354-0680

200 gallon milk tank, very good, \$300. Lanc. Co. 717-464-4040

Sickle bar mower for Farmall Cub, \$125. Warren Co., NJ. 201-454-9920

Cages for laying hens, feed bin and other egg equip. Any Reasonable Offers Accepted. Must Sell. Kingsville, MD. 301-879-8752

Bleachers: 6 sets wooden seats, metal supports, seats 45 people, \$1,200.; Portable stage, 24x32', sold less flooring, \$300. 703-434-5170

Stihl O15 chain saw, excellent condition, \$125.; (3) 8' fluorescent light fixtures, \$5. each, \$12. total without tubes. Perry. 717-567-6445

John Deere, four row, rear mounted three point cultivator, best offer. No Sunday calls. Lancaster Co., Manheim, 717-665-7631.

Ingersoll-Rand diesel powered 160 CFM portable air compressor, \$2,600. Cecil Co., MD. 301-287-5277

1973 Dia Rio CO truck tractor for parts, 13 sp trans., new air cond., Henrickson suspension & 5th wheel, power steering unit, fuel tanks. Bucks Co. 215-257-2377

2 yearling Peacocks, home raised. Lancaster Co. 717-285-4064

(1) AKC Cocker pup, \$95. Mahlon W. Horning, Box 335, R.D.1, East Earl, Pa. 17519. Lancaster Co.

3 pt. cultivator; tobacco plant boxes; tobacco hoers for tractor and horse cultivators. Lancaster Co. 717-442-4510

NH 270 baler w/#52 kicker, \$800.; Hesston PT-10 9' haybine, \$600.; IH 5 bar rake, \$450. Lanc. Co. 717-949-2536

4 1/2 acre lot near Newport, Perry Co., sub-divided approved for standard septic farm land, nice area. \$13,000. 717-567-6749

8' Morrison utility body, heavy duty unit, many extras. 717-689-2158 8 p.m.

3 pt. 2 row corn planter; 3 pt. 2 row cultivator, crimper. Bucks, Perkasio, Pa. 215-257-4890 after 6 p.m.

Baby Lambs, \$35. each. Cecil Co., MD. 301-658-3029 after dark.

IH 990 haybine, MC rotary sythe, 4 row IH cultivator, spring harrow and IH rotary hoe. 717-687-7260

2 year old Eskimo male dog, Bennie Fisher, 94 N. Ronks Rd., Ronks, Pa. 17572.

1973 Int. grain dump, 30,000 GVW, PS, 5+2, \$4,300.; 8 yr. black mare, 15H, 4-H, good trails. Cumberland Co. 717-776-7215

Central PA Farm, located in Blain Co., 250 acres of fertile limestone soils, house recently remodeled. 814-643-4700

Cow kicker, bill hooks for hay balers if your baler isn't working; 16' silo unloader, 30KW standby, 3 1/2 KW. Lanc. Co. 215-445-5309

40' Freuhauf cattle trailer, straight deck w/2nd floor, 42' Wilson pot, both on 10.20. Best Offer. Berks. 215-488-1567

Planer, Boise-Crane, 12" power feed w/phase converter, exc. cond. Bucks Co., 215-679-2749.

7-Tooth tool bar, IH wagon with hay & grain sides and 6 ton hoist. Berks, 215-682-7874.

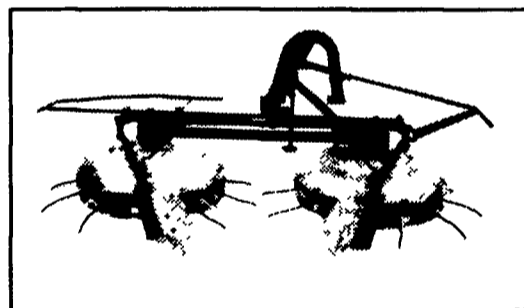
Black Ram 16 months, mixed Karakul Suffolk, \$75. Also, Black Spring Lambs. Lanc. Co., 717-665-7842.

7/8 Simmental cow due 2nd week of July with 3rd calf, T.D. & BWC. Berks Co. 215-926-5542.

WE HAVE THE ANSWER!

From Mower Conditioning To The Chopper... We Have The Tools--

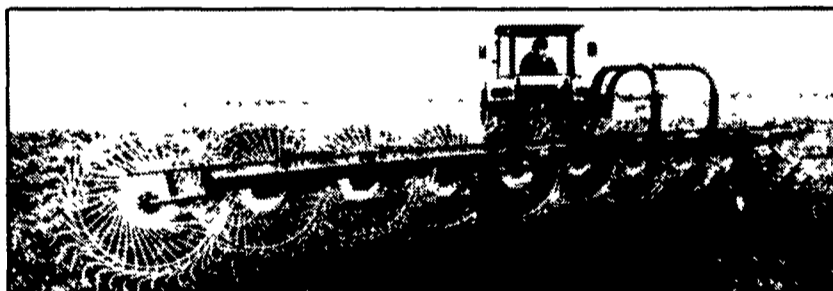
RAKE TEDDERS or STRAIGHT RAKES 8 Ft. To 24 Ft. Available



Whatever Your Needs...



Has The Answer!



See Your Nearest Dealer

Penna. Dealers
BURCHFIELDS, INC.
112 S. Railroad St.
Martinsburg, Pa.
814-793-2194

PETERMAN FARM EQUIP., INC.
225 York Road
Carlisle, Pa.
717-249-2150

WATSON'S INC.
Sharon-Mercer Rd.
Sharon, Pa.
412-346-6514

WM. HOBENSACK'S SONS
1060 Greeley Ave.
Ivlyland, Pa.
215-675-1610

DONALD ERDLEY FARM EQUIP.
RD 1
Lewisburg, Pa.
717-524-2410
717-524-2408 (Eve's)

SCOTTIE SWINGLE RD 5
Lake Ariel, Pa.
717-698-6825

WENNER FORD TRACTOR
Route 202
Concordville, Pa.
215-399-9615

New Jersey Dealers
BEEEMVILLE EQUIP.
RD 3, Box 610
Sussex, NJ
201-875-5672

ERB & HENRY EQUIP. INC.
New Berlinville, Pa.
215-367-2169

STOUFFER BROS.
1066 Lincoln Way West
Chambersburg, Pa.
717-263-8424

SUMMIT SYSTEMS, INC.
Rt. 1
Breezewood, Pa.
814-735-3292
1-800-242-3240

NORMAN BRIGHT, INC.
Evergreen Rd.
New Egypt, NJ
609-758-2211

HUTTON FARM EQUIPMENT
RD 2
Mahaffey, Pa.
814-277-6647

MELVIN J. SHEFFER, INC.
121 Railroad St.
Hanover, Pa.
717-637-3808

TRIPLE H EQUIPMENT
RD 1 Box 141
Peach Bottom, Pa.
717-548-3775

SCHAPER BROS.
RD 8, Box 270
Bridgeton, NJ
609-455-1640

Maryland Dealers
ELLIOTT EQUIP. & HARDWARE
Rt. 328 & Elliott Rd.
Easton, MD
301-822-8866



GET YOUR WILLIAMS 82 SOYBEAN SEED HERE AND BE SATISFIED

VORIS SEED CORN

SORGHUM SUDAN GRASS

FINEST QUALITY SEEDS AT BEST PRICES

REIST SEED COMPANY

Finest Seeds (Since 1925)
Mount Joy, PA (717) 653-4121

EAR CORN

Paying Top Prices For Good Quality Ear Corn

- Wet or Dry
- No Quantity too large or too small
- Fast Unloading - Dump on Pile & Go
- Easy access - 2.2 miles off 283 bypass-Manheim, Mt. Joy exit
- Daily Receiving 7:30 A.M. to 5 P.M. - unloading evenings & Saturdays by appt.
- Trucks available for pick up at your farm.

Call Anytime For Price
717-665-4785

JAMES E. NOLL GRAIN

Join the Vicon revolution