



**CUMBERLAND COUNTY DHIA Monthly Report**

**CUMBERLAND COUNTY DHIA April, 1986**

Cumberland County Dairy Herd Improvement records show that 7,682 cows on 122 herds were on production testing in April according to Duane G. Duncan, County Agent. Of the 101 herds of DHIA, 38 herds has an average fat production of 600 pounds. During the month 89 cows completed their 305 lactation with 650 lbs of butterfat. DHIA Supervisors working with the dairymen to improve efficiency include Harold Boldosser, 130 Old Gap Road, Carlisle, PA, John Rolar, R D #2, Box 97, Newville, PA, Owen McCulloch, R D #2, Box 333, Newville, PA, and Shane Henry, R D #3, Newville, PA. The following are the highest of actual butterfat in 305 days or less in the county during the month. The age listed is her age at the time of freshening.

Samuel D Shenk Sugar	B3	8	24,209	873
Ashcombe Dover Dairy R 411	3	3	21,204	852
Clifford Chamberlin Hide	3	3	21,808	848
Mark A Naugle Taffie	3	6	18,233	835
Thrush Brothers 97	3	3	20,523	834
Roy E Deitch & Sons 92	B3	3	19,174	829
John F Stamy, III 48	3	5	19,789	819
J Shephard Wolff XNSY	3	6	22,034	789
John F Stamy III 116	3	7	22,622	785

Roy E Snoko Pearl	3	3	21,632	782
J Glenn Glesner 21	3	3	16,920	782
Lewis N Martin Ruthy	B3	4	15,703	781
Stambaugh Farms 180	B3	4	22,761	780
Ashcombe Dover Dairy 25	B3	7	20,108	*770
Lemar Farm Belle	3	9	23,182	755
M Thomas Sheaffer Precious	3	5	19,684	755
Ashcombe Dover Dairy R 389	3	3	21,758	754
JB Brymesser & Sons 558	3	3	21,825	753
Robert E Keefer 209	B3	4	18,851	752
Clifford Chamberlin Boe	3	7	17,955	747
J Paul Strook Patti	3	3	18,302	744
John F Stamy III 37	3	3	17,347	742
Berkheimer Farms 46	B3	4	20,352	741
Donald M Leatherman Eskimo	3	9	20,721	739
Robee Acres Marian	3	6	21,659	738
John F Stamy III 157	3	9	20,956	738
Galen & Linda Smith Allie	3	3	19,270	738

\* - Indicates 3 Times A Day Milking

David E Gettle	B3	51	86	19,065	718
Kenneth Zeigler Sons	3	51	90	19,245	695
Alvin M Martin	B3	46	86	19,911	688
J Shephard Wolff	3	50	89	19,069	674
M Thomas Sheaffer	3	59	86	19,174	669
Fred B McGillyray	B3	45	89	19,493	664
Alfred Gaisler	B3	44	91	18,732	660
Carl Kelso Jr	B3	60	91	19,185	657
Leroy Showaker & Son	3	85	86	17,726	655
John F Stoltzfus	3	48	87	18,867	654
Highland Vue Farms	B3	28	88	17,070	654
Donald M Leatherman	B3	39	86	18,406	652
Marlin Miller & Sons	B3	43	90	18,277	652
J David Martin	B3	43	87	18,491	651
Nevin Shughart	B3	30	87	18,633	649
Lemar Farm	B3	36	84	17,330	646

J Glenn Glesner	3	52	91	17,363	645
Bubbling Spring	B3	36	84	17,805	641
Allen B Martin	G3	42	90	18,996	640
Robee Acres	3	100	91	17,647	637
J Paul Strook	3	123	88	18,246	635
Lee Davidson	3	62	87	17,166	626
Norman Hertzler	3	35	87	20,012	625
Herbert B Shughart	3	26	89	18,125	624
Berkheimer Farms	B3	154	84	17,199	623
Thrush Brothers	3	108	85	16,927	621
Clifford Chamberlin	3	35	82	16,681	618
Oscar Nealy & Sons	B3	134	87	17,625	616
Daniel L Martin Jr	B3	67	87	18,526	*613
Ashcombe Dover Dairy	B3	218	88	17,814	611
Samuel D Shenk	B3	63	88	17,837	607
Roy L Miller	B3	42	85	17,329	607
Glenn W Myers	B3	57	90	17,990	604
Donald & Dave Lehman	3	69	88	16,525	603
Five Oaks Farm	B3	38	88	17,477	602
Freshair Dairy Farm	3	34	86	17,258	602
Roy E Snoko	3	43	88	18,401	600
Lee N Hoover Jr	B3	42	87	16,515	600

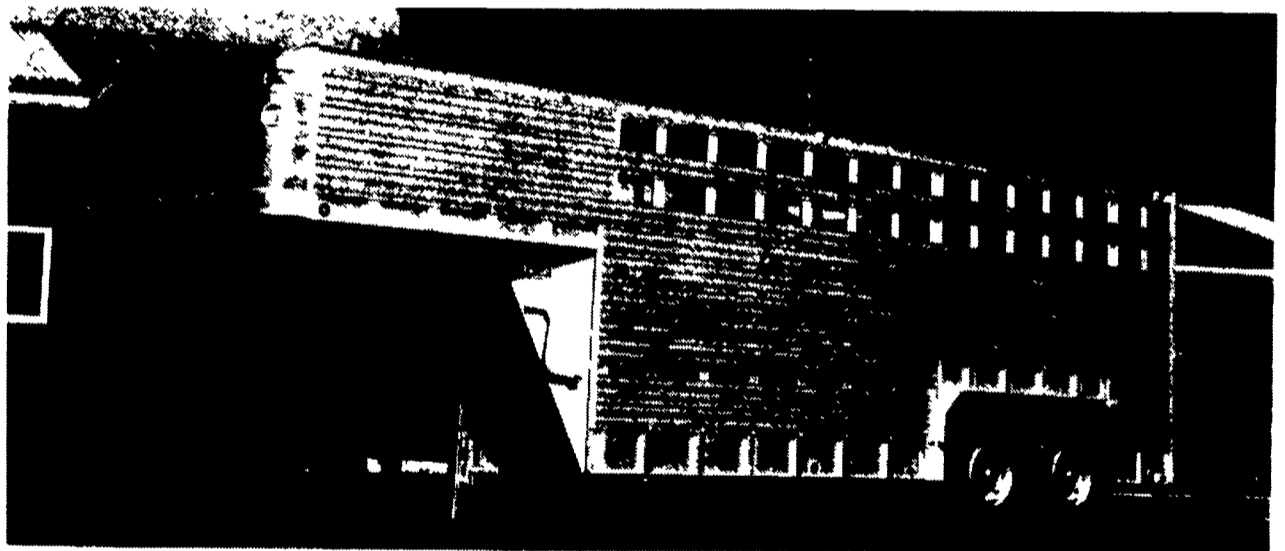
\* - Indicates 3 Times A Day Milking

Otto Brothers 131	8	19,236	37	712
115	5	20,701	32	671
98	5	19,709	34	661
Mark A Naugle Taffie	6	18,233	46	835
Robee Acres Marian	6	21,659	34	738
Felicia	9	17,741	40	709
Toots	12	17,454	40	701
Mint	3	18,965	37	700
Tax	4	17,472	39	673
JB Brymesser & Sons 558	3	21,825	35	753
557	3	22,490	32	719
607	2	16,708	40	660
555	3	19,984	33	650
Roy E Snoko Pearl	3	21,632	36	782
Galen & Linda Smith Allie	3	19,270	38	738
Thrush Brothers 97	3	20,523	41	834
115	4	17,073	41	692
80	2	18,116	38	682
25	2	15,259	45	682
J Paul Strook Patti	3	18,302	41	744
Valerie	7	20,744	35	717

(Turn to Page E17)

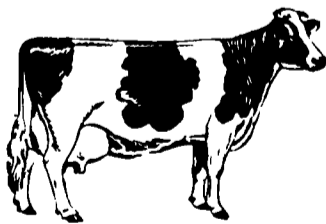
**MILK**  
**AMERICA'S HEALTH KICK**

**EBY BLUE BALL, PA ALUMINUM GOOSENECK TRAILERS**



**20' Gooseneck Trailer**

A versatile, lightweight, Eby aluminum stock trailer is built to provide years of maintenance free service. An Eby trailer is custom built to fit your individual hauling needs - No mass production! We use only quality components and strong alloy aluminum to manufacture what may be the last trailer you'll ever buy.



*We Salute The Dairy Farm Families, A Vital Part Of Our Business*

- **LIGHTWEIGHT** - Eby stock trailers are 25-35% lighter than comparable steel trailers. Less weight means better fuel mileage or increased payload.
- **MAINTENANCE** - Eby aluminum trailers won't rust. Welding and painting can cost you dollars in down time and repairs.
- **DURABILITY** - Eby trailers are built tough. Quality components and 6061 alloy aluminum provide the ruggedness required in a livestock trailer.

**CONTACT US**  
For  
**SUPER GROUND DRIVE TANK - SPREADERS PIT - ELEVATORS**

**COMPACT ROTO BEATERS**

**WISCONSIN & ALLIS CHALMER POWER UNITS**

**HAND-O-MATIC BUNK FEEDERS**

**COMBINATION MOWER AND CRIMPER UNITS**

**455 AND 456 MOWERS**

**NEW IDEA CRUSHERS**

**NOW AVAILABLE Crimping Rolls To Fit Your New Idea Crusher**  
Speeds drying time approx. 1/2 day.

**SMUCKER**  
WELDING & MANUFACTURING  
2110 Rockvale Road  
Lanc., PA 17602  
ANS. SERVICE 7 to 8 AM 717-687-0772



Box 127, Blue Ball, PA 17506

**M.H. EBY, INC.**

717-354-4971

