

## Lancaster Seeks FmHA Committee Nominees

LANCASTER — Eligible Farmers in Lancaster County are invited to become nominees for the Farmers Home Administration (FmHA) county committee, FmHA Acting County Supervisor, Bernard C. Linn, Jr. announced recently.

As a result of the 1985 Farm Bill, two of the three members of FmHA county committees must be elected. The third member is designated by FmHA. The Lancaster county committee assists the FmHA county office in determining the eligibility of

applicants for certain types of FmHA loans.

Generally, farmers who are residents of the county but not FmHA borrowers are eligible to become nominees for the FmHA county committee.

"Farmers in this county, serving on the committee, play an important role by assisting in the process of loan applications and reviews," said Acting County Supervisor, Bernard C. Linn, Jr.

For this first election only, two members will be elected at the same time. One member will be

elected for a term of one year, and one member will be elected for a two year term. In the future, all terms of service will be for three years each on a staggered basis.

Nominating petitions must be returned to the FmHA Lancaster county office by June 16, 1986, 9 a.m.

Additional information and application forms for those who are interested in becoming nominees for the county committee are available at the FmHA county office, 1383 Arcadia Road, Lancaster, PA, or by calling 393-4760.



### Centre County Grange Women Gather

Centre County Pomona Grange Women gather to make a large quilt for a fund-raising project in August, during the Grange Fair in Centre County, Aug. 22 to 28.

Working on the Log Cabin pattern quilt are from left, Roxey Bohn, Grace Sweeney, and Alma Hagan.

**NEW**

**from  
ROHRER'S**

**ALFALFA  
TOPDRESS 5-10-41**

**An ideal fertilizer for  
top dressing alfalfa.**



**You can get the advantage of Ortho Unipel fertilizer  
plus additional high quality Potash.**

Alfalfa demands a lot of potash from soil and fertilizer. In fact, alfalfa removes four times more potash than phosphate from the soil. And that's what Rohrer's Alfalfa Topdress 5-10-41 provides, the proper 4:1 ratio of potash to phosphate that alfalfa needs along with quickly available nitrate nitrogen that can help stimulate regrowth after cutting. In addition to supplying the right nutrient package, Rohrer's Alfalfa Topdress 5-10-41 applies easily, quickly, and economically. Call us today at 299-2571 for a program recommendation.

**P. L. ROHRER & BRO., INC.**

SMOKETOWN, PA

PH 717-299-2571



**ORTHO  
FERTILIZERS**

Helping the World Grow Better

Introducing KARCHER  
Quality Cleaning Systems:

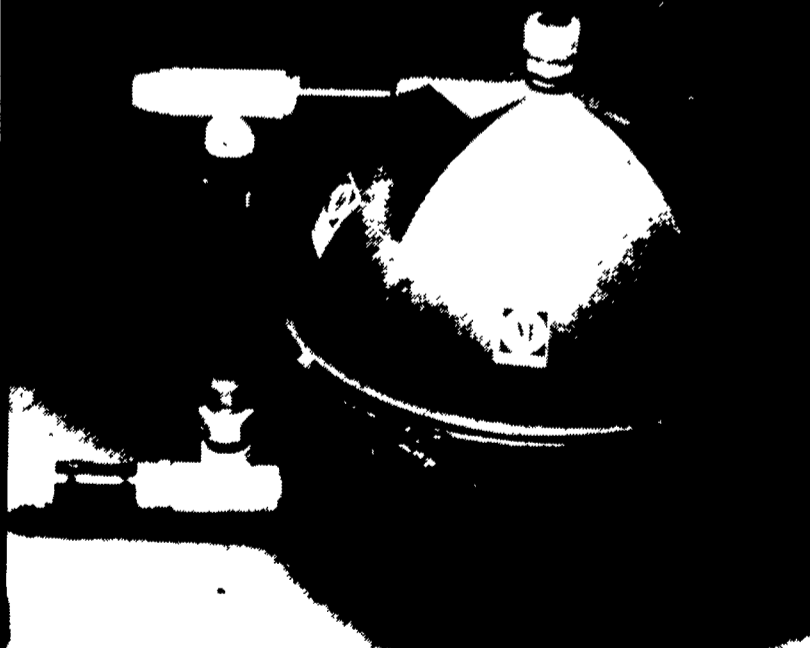
**price plus  
performance**



You talked and we listened by becoming an authorized Sales and Service Dealer for Karcher Quality Cleaning Systems. The world's best-selling pressure washers are guaranteed to make your toughest chores a lot easier. And more economical. We'll be happy to introduce you to Karcher quality with a no-cost, no-obligation, demonstration. Once you've seen the unit in action we think you'll agree nothing matches its quality, dependability or efficiency. For price plus performance, call us today.

**KARCHER**  
high pressure  
cleaning systems

**MONOFLO® MEDICATOR MODEL 25000**



The Monoflo® Medicator is designed by experts, to be a modern, exact, and inexpensive medicament proportioner for the treatment of animals.

**NO PUMP TO MALFUNCTION, NO WHEELS OR  
SCREWS, NO MOVING PARTS!**

4 Gal... **\$124.00**

SWINE & POULTRY SYSTEMS SPECIALISTS

**FARMER BOY AG.**

410 E LINCOLN AVE MYERSTOWN, PA 17067 PH 717-866-7565

**BEST IN DESIGN, PRICE AND EXPERIENCE**

**WE SALUTE THE  
DAIRY FAMILIES  
FOR THEIR**

**Devotion  
Aggressiveness  
Ingenuity  
Resourcefulness  
Young-at-heart  
Management  
American pride  
Neighborliness**



PROMPT SERVICE  
Serving Lancaster, Chester, York, Cecil & Hartford Counties

**W & J DAIRY SALES**

1202 Lloyds Rd., Oxford, PA 19363

**(717) 529-2569**