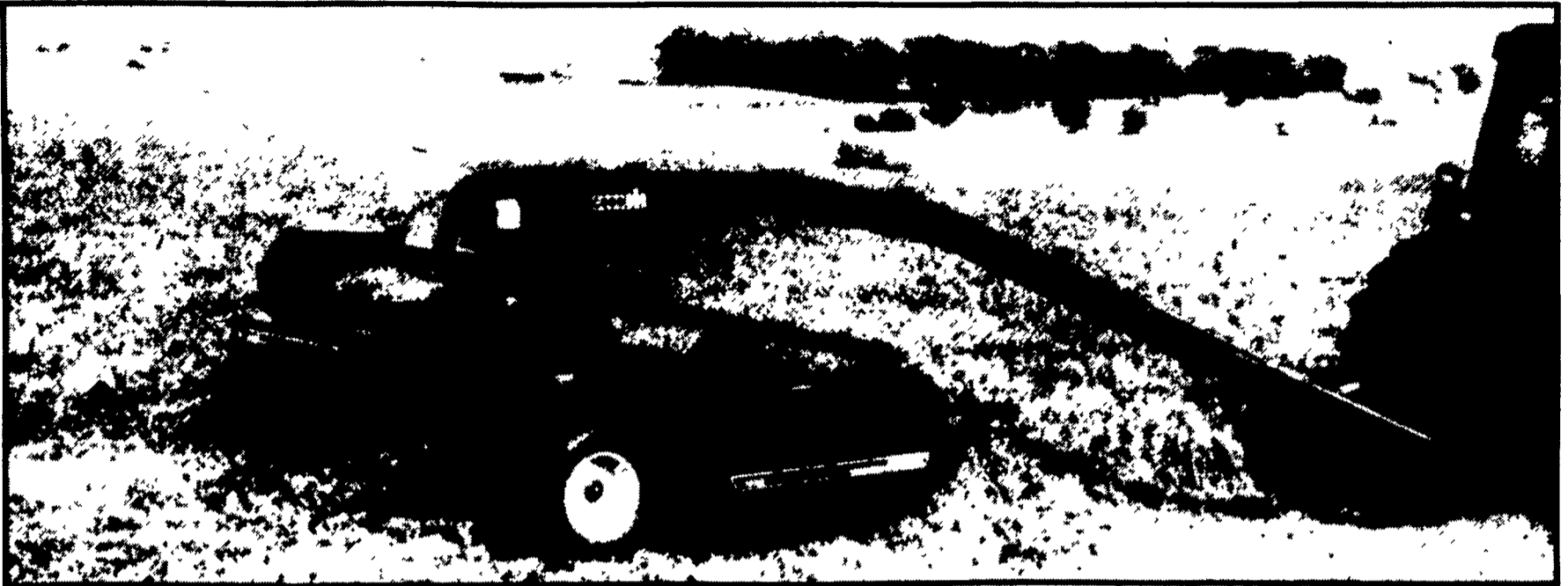


HAY AND FORAGE EQUIPMENT



MOWER CONDITIONERS

The efficient way to high quality feed production

If you are in the dairy or beef business and raise all or part of your hay and forage, you owe it to yourself to find out what Case International has to offer in equipment. Case International hay and forage equipment can help you harvest and preserve your crops when they're at their highest nutritional value. See your dealer for equipment that has the crop-handling capacity to enable you to move fast when a crop is ready to be mowed, chopped or baled.

You'll see:

- Sickle-bar mowers, and mower-conditioners including models with 12

and 14 ft. widths (3.7 and 4.3 m) for acre-eating capacity, plus dual rakes that reduce trips over the field while keeping your haymaking on schedule.

- Rectangular balers offering up to 19 tons (17,252 kg) per hour capacity, plus round balers that let one man produce up to 18 tons (16,344 kg) of 6-foot (1.8 m) diameter bales per hour.

So see your Case International dealer and have him help you choose the equipment best suited for your operation. And remember, he'll be there after the sale to back you up with the best parts and service.



RECTANGULAR BALERS



ROUND BALERS

5% APR Financing
or
Interest Waiver Until 5/1/87
or
Additional Discounts



TRI COUNTY EQUIPMENT

Rt. 40 & 557
Vineland, N.J. 08360
609-697-1414

CLARENCE WILSON & SON

Kimberton, PA
215-933-3581

BENDER IMPLEMENT CO.

Somerset, PA
814-443-4611

C & P FULTZ EQUIPMENT

Rt. 45 East
Spring Mills, Pa. 16875
814-422-8805

R.S. HOLLINGER & SON

Mountville, PA
717-285-4538

HICKORY INTERNATIONAL INC.

Route 1 Hickory
Bel Air, MD
301-838-4200

BINKLEY & HURST BROS.

133 Rothsville Station Rd.
Lititz, PA
(717) 626-4705

MELVIN J. SHEFFER, INC.

121 Railroad Street
Hanover, PA
717-637-3808

MANOR EQUIPMENT, INC.

Wheatfield, PA 18356
Sinking Spring, PA 19608
215-678-0828

VOUGH & SONS, INC.

Bangor, PA
215-588-5922

C.H. WALTZ SONS, INC.

Cogan Station, PA
717-435-2921

LIGONIER SALES & SERVICE

Ligonier, Pa. 15658
412-238-5790

HOOPER EQUIP., INC.

Middletown, DE
302-378-9555

MESSICK FARM EQUIP.

Rheems Exit Rt. 283
Elizabethtown, PA
717-367-1319

COASTLINE, INC.

Rt. 537 & 524
Freehold, N.J. 07728
201-780-4600

SIVERS EQUIPMENT CO.

Wyalusing, PA
717-746-3355

ERB & HENRY EQUIP., INC.

22-26 Henry Ave.
New Berlinville, PA
1 Mile North of Boyertown
215-367-2169

WM. HOBENSACK'S SONS

1060 Greeley Ave
Ivyland, PA
215-675-1610
215-343-2101

WARNER TRACTOR & EQUIPMENT, INC.

Troy, PA
(717) 297-2141

FARM-RITE INC.

Shiloh, NJ
609-451-1368

NORMAN BRIGHT

New Egypt, NJ
609-723-0300

LAMB'S FARM MACHINERY

Thorndale, PA
215-269-2676

M & R EQUIPMENT, INC.

New Park, PA
717-993-2511

INCH EQUIPMENT CO.

McAllisterville, PA
717-463-2191

MORRIS INTERNATIONAL INC.

Everett, PA
814-652-6101

CARLISLE FARM SERVICE

260 York Rd.
Carlisle, PA 17013
717-243-4419

MIFFLINBURG FARM SUPPLY

Route 45
Mifflinburg, PA
717-966-3114

GEORGE W. KINSMAN, INC.

516 Main St.
Honesdale, PA 18431
717-253-3440

COOPERS HDWE, INC.

Turbotville, Pa 17772
717-649-5115
1-800-441-FARM

HINES EQUIPMENT

Cresson, Pa. 16630
814-886-4183

A.L. HERR & BRO.

312 Park Ave.
Quarryville, PA
(717) 786-3521

BIGGS INCORPORATED

34 Buckley Ave.
Rising Sun, MD
301-658-5531

ECKROTH BROS. FARM EQUIP.

RD 2, New Ringgold, PA
717-943-2131

C.B. HOOPER & SON

Intercourse, PA
717-768-8231

RINGTOWN FARM CO., EQUIPMENT

RD #1 Box 3A
Ringtown, PA
717-889-3184