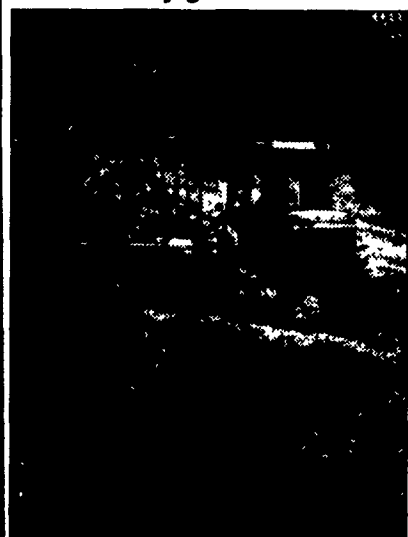


INTRODUCING PRO DRY™ Forage Drying Agent

Cuts up to a full day off forage drying time



"Why gamble on the weather when you can harvest quicker with Pro Dry."



Faster drying means higher quality forage, and less chance of rain damage

You know the uncertainties of haying in the Northeast. You cut, wait and pray. And chances are good that in the two, three or even four days needed to field dry your hay, the rains will come. Even 1" of rain robs your hay of \$11 per ton in nutrient value. And a heavy continuous rain will spoil your entire crop.

Of course you can't control the weather. But you can take control of your hay drying time with new Pro Dry. Pro Dry dries hay faster, and enables you to bale sooner, usually a full day faster than the time needed for normal field drying. No other drying agent can beat the performance of Pro Dry, because Pro Dry contains the two active ingredients proven to be the most effective and economical in speeding drying time and preserving dry matter (see chart).

Field drying rates (drying constants) and dry matter losses for alfalfa

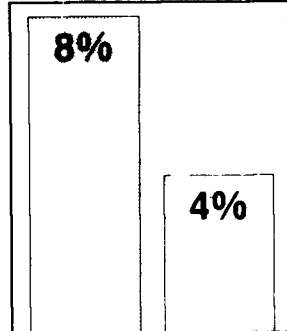
UNTREATED TREATED WITH DRYING AGENT

DRYING CONSTANTS

(Higher rate indicates faster drying time)

DRYING CONSTANT	UNTREATED	TREATED WITH DRYING AGENT
FIRST DAY	.132	.195
SECOND DAY	.183	.293
OVERALL	.145	.220

FIELD CURING DRY MATTER LOSSES



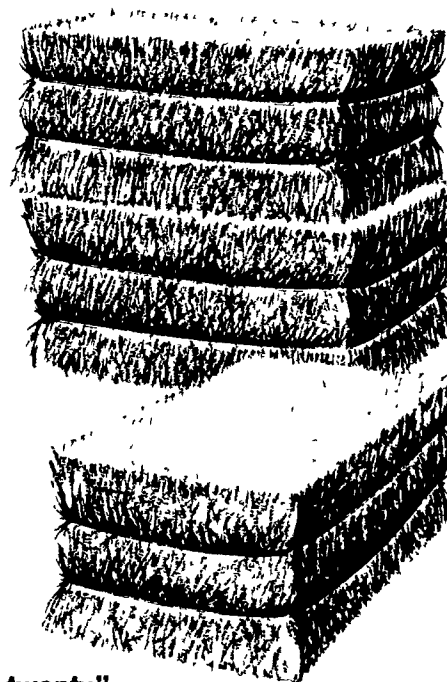
Source: Test conducted by USDA using primary ingredients found in Pro Dry

AGWAY FIELD FRESH™ High Moisture Preservative

Recovers up to 15% more feed value from your forage harvest

The longer your hay lies drying in your field, the more dry matter disappears through leaf shattering, respiration and rain loss. But with Field Fresh you can safely bale at higher moistures (25% to 30%) without risk of spoilage or fire.

Field Fresh contains a high percentage of nature's strongest hay preserving agent. So it preserves your forage better, longer and at higher moistures than most other products. Best of all, university tests show that at 28% moisture, Field Fresh treated hay recovered 14.8% more dry matter, and produced more milk pound for pound of dry matter than field dried hay. And that means Field Fresh can provide up to 15% more feed of equal value from your harvest.



"It's like getting three bales free in every twenty."

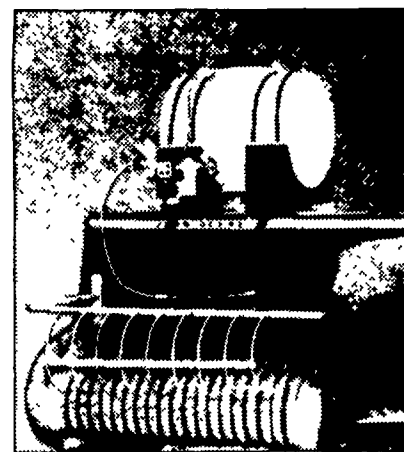
Effect of Field Fresh treatment on dry matter losses

	TREATED	UNTREATED
Harvest moisture %	27.2	17.9
Mowing and curing losses %	7.1	13.2
Packaging baling loss %	2.6	3.5
Storage loss %	4.8	7.8
Feeding loss %	0.4	5.2
Total losses %	14.9	29.7

Source: Penn State research

Easy application

Spraying equipment applies Field Fresh safely and accurately to hay at the baler, or to high moisture corn at the auger. Equipment is highly corrosion resistant. Available through Agway.



COCHRANVILLE, PA
215-869-8006
TOLL FREE
800-822-2095

LEBANON, PA
717-273-2621

NEWVILLE
717-776-5411

NEW HOLLAND
717-354-4526

CUMBERWAY, PA
CARLISLE
717-243-4312

IRONTON, PA
215-799-3111

CHAMBERSBURG, PA
717-263-4197

LEESPORT, PA
215-926-3717

YORK, PA
717-792-2674
717-846-8861

SALUNGA, PA
717-898-2248
717-394-0841

GETTYSBURG, PA
717-334-7107

QUARRYVILLE
717-786-2126

WINFIELD, PA
800-222-2136



AGWAY

answers your needs

