

*** USED EQUIPMENT ***

Construction Equipment

Backhoes

JD 310, 1973
Case 580-CK Gas
IH 3514
MF 80
Case 580-C, 77, Like New

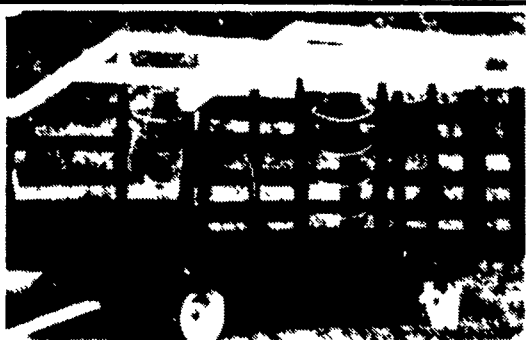
Crawlers

JD 555
JD 450
JD 2010
AC-HD4

Misc

(2) Asphalt Rollers, 10 Ton (1) 3 Wheel
With 371 Detroit w/904 hrs.
(1) 2 Drum, 4 Cylinder Gas
Power Unit, 453 Detroit Diesel w/Twin
Disc Clutch
Int. Forklift, 4500-B
Michigan Payloader, 75-AG, 1 1/4 Yard
Bucket
JD 850 diesel, rubber tires w/loader,
3 pt. hitch w/mower, rototiller
500 hrs., like new

Inventory Changing Daily
Call For Current Prices
Ask For Rick Kamman
Day 301-335-4189
Evenings 301-335-5920



All Oak Bale Wagon Racks

18'L - 9 1/2'W - 7 1/2' H - Painted
Extra wide, 8 ton gear adj. tong.
11L tires and tubes..... **'1,280**
18'L - 8'W - 7 1/2' H
Painted red and white..... **'550**
Without Paint..... **'510**
16'L - 8'W - 7'H
Painted red and white..... **'450**
20' Green Chop Feeding Rack **'470**
8 Ton Gear, Used Tires
and Tubes..... **'485**
8 ton gear 11L tires & Tubes..... **'645**

For wagon gears only...
Call 717-354-0595

Ivan Z. Hoover

Route 2, Box 13
Ephrata, PA 17522

717-733-6825 7 AM to 7 PM

**NEW 3 PT.
FARM EQUIP.
& SICKLE
MOWERS**

- * 1 & 2 Bottom Plows
- * Discs - 4' - 8'
- * Blades 5'-8'
- * Box Blades 4'-8'
- * Stone Rakes 6'-8'
- * Post Hole Diggers
- * 1 Row Cultivators
- * Dirt Scoops
- * Broom Poles
- * Rear Carriers
- * Wood Saws
- * Fertilizer Spreaders
- * Concrete Mixers
- * Field Cultivators
- * Potato Plows
- * Hay Rakes & Tedders
- * Rotary Mowers 4'-6'
- * 5'-6' Finish Mowers
- * Bale Carriers
- * Bale Spears
- * Rototillers
- * Log Splitters
- * Power Winch
- * 8 Ton Wagon Gears
- * 10' Tilt Trailer
- * '78 Dodge Club-Cab, 4WD PU
- * '78 TransAm

DEALERS WANTED

Lots of Used Equipment

KUTZ FARM

EQUIPMENT

Pine Grove, PA

(717) 345-4882



**HESSTON
CORPORATION**

NEW EQUIPMENT SPECIALS

Bush Hog Soil Hog 15 Shank Flat Fold,
32" Shank..... **\$12,300**
7 Shank Soil Hog..... **\$ 5,200**
Dion Forage Wagon, 3 Beater Roof,
10 Ton..... **\$ 6,000**

Kuhn Tedders-Most Models in Stock

NI 486 Round Baler..... **\$ 9,800**
M&W 1500 Round Baler..... **\$ 9,350**

HESSTON EQUIPMENT

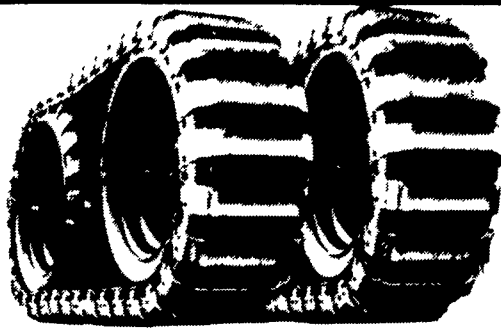
Hesston Tractors 37HP-160HP..... In Stock
1010 Hydro Swing..... **\$ 7,500**
1091, 9' Windrower..... **\$ 6,000**
1150, 12', 9' Rolls..... **\$ 8,900**
DP20 Baler Processor, DEMO..... **\$ 6,900**
2420, 12' Disk Harrow, 22" Blade,
Spring Gang Hangers..... **\$ 3,500**

USED EQUIPMENT

Used Hesston 4800 Big Baler..... **\$22,000**
NH 495, 12' Haybine..... **\$1,800**
1983 White 2-105, 4WD, 540 Hrs.
Oliver 550 Gas
IH 240 Utility
Kuhn 8' SP 250 Disk Conditioner
Bush Hog 9' Rotary
Amco F15, 24' Wing Disk
White 281, 12' Offset

STOLTZFUS FARM SERVICE

Cochranville, PA
215-593-2407



**THE
SURE-FOOTED
TIRE CRAWLER
TRACKS**



LOEGERING MFG. INC.

"Best of Both"

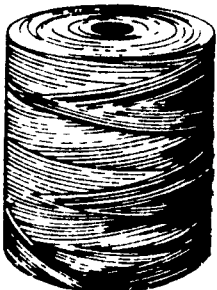
**The Soft Ride Of Rubber
Plus The Durability Of Steel**

**See Us For
All Your Needs**

**PLACE YOUR ORDER
NOW!**



BALER TWINE IN STOCK



**SAVE! SAVE
\$\$\$ NOW!**

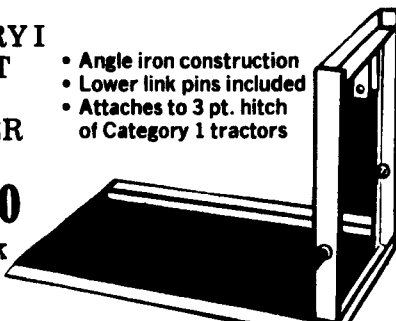
- Good Quality Clover Baler Twine
- No. 1 Quality Sisal Twine - 9,000 Ft., 10,000 Ft.

CATEGORY I

**3 POINT
LIFT
CARRIER
ONLY**

**\$45.00
In Stock**

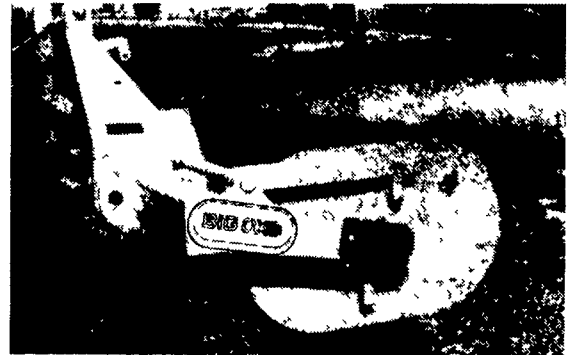
- Angle iron construction
- Lower link pins included
- Attaches to 3 pt. hitch of Category 1 tractors



**BLADE,
SCARIFIER
BOX BLADE**

A pull of the
trip lever
locates the
desired
position.

MODELS ROB48 ROB54 ROB66 ROB72 ROB84



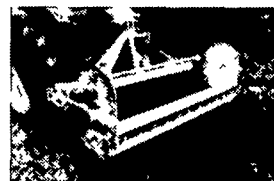
Roll Over Box Blade with
optional Hydraulic Trip Lever
Kit for larger tractors or
tractors with cabs.

FEATURES

- 2 piece construction
- Convenient locking rod for shanks
- Shanks preset to 30° entry position
- High carbon steel reversible cutting edges
- Heavy duty A frame
- Greasable bearings



The Roll-Over Box Blade will drag a load or level a work site to grade



To rip, rotate the Roll-Over to the scarifying position Rigid shanks offer penetration in hard or compacted soil with minimal drag



Simply trip the lever and reverse the blade for backfilling

SPECIFICATIONS

MODEL	ROB 48	ROB 54	ROB 66	ROB 72	ROB 84
Box height	16	16	16	16	16
Width	48	54	66	72	84
No. of shank	5	5	6	7	8
Hitch	Cat 1	Cat 1	Cat 1 & 2	Cat 1 & 2	Cat 1 & 2
Approx. Weight	545	590	1070	760	870
No. of cutting edge	2	2	2	2	2
Maximum H.P.	45	75	75	75	75

**IN STOCK
Model ROB72
ONLY
\$716**

**STARLINE TANDEM AXLE
TANK SPREADER**



\$3,650

**DO YOUR OWN LOGGING
With A 3 Pt. PTO
CABLE WINCH**

- Approx. 250 Ft. Of Cable
- 3 Ton Pull



\$545

BINKLEY & HURST BROS., INC.

133 Rothsville Station Rd Lititz, PA 17543

Located 1/2 Mile North of Rothsville

PH: 717-626-4705

Hours: Mon.-Fri. 7 AM - 5 PM; Sat. 7 AM - 11:30 AM; Sun. Closed - Lord's Day