



Livestock market and auction news

Virginia Cattle

Richmond, Virginia
Northern, Va.
Thurs., May 22 to
Wed., May 28, 1986
Report Supplied by VDA
Head Count: 2,169

Trend: Steady to 2.00 higher.
STEERS: Medium 1 300-500 lbs.
59.00-69.00; 500-700 lbs. 55.00-68.00;
700-1000 lbs. 49.00-56.75. Large 1
700-1000 lbs. 54.25. Small 1 300-500
lbs. 58.50; 500-700 lbs. 53.50-59.00.
HEIFERS: Medium 1 300-500
lbs. 48.00-56.00; 500-700 lbs. 47.00-
52.50; 700-900 lbs. 43.00-47.50. Large
1 300-500 lbs. 49.00-53.00; 500-700
lbs. 44.50-53.00; 700-900 lbs. 46.00-
53.00. Small 1 300-500 lbs. 46.50-
49.00; 500-700 lbs. 40.00-50.50; 700-
900 lbs. 38.00-50.00.
South & Southwest Va.
STEERS: Medium 1 300-500 lbs.

57.00-64.00; 500-700 lbs. 53.00-64.50;
700-900 lbs. 50.00-57.50. Large 1 300-
500 lbs. 61.00-65.00; 500-700 lbs.
54.00-65.50. Small 1 300-500 lbs.
51.50-60.00; 500-700 lbs. 50.00-59.00.
HEIFERS: Medium 1 300-500
lbs. 48.00-55.50, 500-700 lbs. 44.00-
52.25; 700-900 lbs. 45.50. Large 1
300-500 lbs. 50.00-53.00; 500-700 lbs.
48.00-53.00. Small 1 300-500 lbs.
40.00-52.50; 500-700 lbs. 46.00-48.75.

Shenandoah Valley Livestock

Harrisonburg, Va.
Saturday, May 24

Report supplied by auction

FEEDER CATTLE:

STEERS: 300-500 lbs. 57.00-68.00;
500-700 lbs. 50.00-62.00; 700-1000 lbs.
36.00-56.00; Holstein 300-1000 lbs.
40.25-50.75.

FEEDER BULLS: 500-700 lbs.
35.00-47.00, 700-1000 lbs. 41.75.

HEIFERS: 300-500 lbs. 45.00-
54.00; 500-700 lbs. 35.75-52.75.

STOCK COWS: Beef w/calves
540.00 & Down; Baby Calves 17.00-
105.00.

SLAUGHTER COWS: Utility &
Commercial 2-4 33.00-37.50;
Canner & Cutters 1-3 25.00-32.00.

LAMBS: Blue O High Choice &
Prime 81.00; Red O Choice 75.00;
Feeder Lambs Choice 64.50-74.50;
Slaughter Ewes 18.50-27.00.

HOGS: US 1-3 200-240 lbs. 45.00-
90.00; Sows 1-3 30.00-35.50; Boars
25.00.

Four States Livestock

Hagerstown, Md.
Wednesday, May 28

Report supplied by Auction

SLAUGHTER: Fed Steers, \$1
Higher. Low Choice 52.00-52.25;
Good 48.00-51.00; Medium 47.00-
Down. Heifers, Choice 51.00-55.00;
Good 45.00-50.00; Medium 44.00-
Down. Cows, Steady to \$.50 higher.
High Yield 38.00-40.00; Average
34.00-37.00; Big Middle 29.00-33.00;
Fatty Herf. 28.00-33.00, Shelly
30.00-Down. Fat Bulls, Steady.
Good 44.00-46.25; Medium 40.00-
43.00. Veal Calves, Steady Prices.
Good 65.00-77.00; Medium 55.00-

64.00; Farm Hfrs. 50.00-55.00;
Farm Bulls 90.00-114.00; Light
Calves 43.00-50.00; Weak Calves,
42.00-Down. Lambs, \$3 Higher.
Choice 72.00-75.00; Good 67.00-
71.00; Medium 66.00-Down.

STOCKER: Good Run, Steady
Prices. Steers - 300-550 lbs. - Choice
62.00-67.00; Good 56.00-61.00;
Medium 50.00-55.00; Culls 49.00-
Down. Steers - 600-850 lbs. - Choice
61.00-65.00; Good 54.00-60.00;
Medium 53.00-Down. Heifers - (All
Weights) - Choice 48.00-53.00; Good
43.00-47.00; Medium 38.00-42.00.
Dairy Cows - to \$550.00. Springing
Heifers - To \$760.00. Pigs, Hd. \$1-\$3
under last week. 20-35 lbs. 20.00-
32.00; 40-60 lbs. 33.00-40.00; Shoats
By Lb. 40.00-43.50. Slaughter Hogs-
No top hogs offered; #2 205-215 lbs.,
44.00-46.75. Sows - \$1 lower. 400-680
lbs. 38.00-39.25; 300-400 lbs. 32.25-
37.00. Bulls - Good 50.00-54.50;
Medium 45.00-49.00.

Westminster Livestock Auction

Hagerstown, Md.
Tuesday, May 27

Report supplied by auction

SLAUGHTER COWS: Mostly
Steady Prices. High Yield 38.50-
39.50; Utility 35.00-38.50; Cannors
31.00-35.00; Shelly 31.00-Down.
Bulls - High Yield 49.00; Medium to
Good 40.00-43.50. Fed Steers - Few

Offered. Low Choice 51.75; Good
Holstein 44.75. Fed Heifers - Low
Good 800-925 lbs. 44.00-45.00. Veal
Calves - Good Run. Good & Choice
65.00-77.00; Standard & Good 50.00-
64.00; Killers 80-100 lb. 44.00-52.00;
Weak/Rough 40.00-Down. Farm
Calves - Holstein Bulls 100-125 lbs.
90.00-115.00; 90-95 lbs. 60.00-90.00.
Holstein Heifers - 105-125 lbs., 52.00-
60.00. Butcher Hogs - Good Run,
Steady Prices. US #1&3 215-245 lbs.
47.00-48.00; 1 lot 265 lbs., 46.75; 195-
210 lb. 45.00-46.25; Sows - 500-650
lbs. 38.00-38.25; 350-500 lbs. 35.00-
38.50; Boars - 450-755 lbs. 29.00-
30.00.

STOCK CATTLE: Small Run.
Steers - Good Demand. 300-700 lbs.
Good 59.00-64.00; 3 Head 272 lbs.
67.50; Few 700-900 lbs. 47.00-51.00.
Heifers - Few Offered. 300-600 lbs.
43.00-51.50; Bulls - 500-700 lbs.
Medium to Good 42.00-51.00; 700-
900 lbs. 45.00-46.50. Lambs - 32 head,
Good Demand. Few 35-45 lbs. 77.00-
81.00; 60-85 lbs. 74.00-79.00; 90-110
lbs. choice 77.00-80.00; Good 66.00-
69.00; 117-120 lbs. 63.00-69.00.

SHEEP: 18 head. 19-27 lbs. 1
Yrlg. 47.00. Goats - 38 head. Large
mature 40.00-61.00; Medium 25.00-
40.00; Kids 15.00-23.00. Pigs and
Shoats: 70 head. By The Head - 15-
30 lbs. 24.00-31.00; 40-60 lbs. 28.00-
43.00; 65-90 lbs. 37.00-49.00; 100-115
lbs. 44.00-52.00. By The Lb. - 1 lot 95
lbs. 50.50; 1 Stock Boar 255 lbs.
30.25.

TIME CHANGE

Starting June 5

CHAMBERSBURG LIVESTOCK SALES, INC.

I-81, Exit 5, Wayne Ave., Chambersburg,
PA. — 717-263-9251.

REGULAR LIVESTOCK SALE

THURSDAY, 1 P.M.

Steers sold in individual lots.

HAY SALE — ALL YEAR

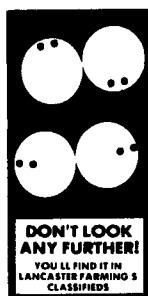
THURSDAY, 11 A.M.

4th Saturday of each month at 6:30 P.M.

ANTIQUE SALE

1st & 3rd Monday of each month
3:30 P.M.

The best price means competition
the auction way.



D & H Cattle Transport

Local and Long
Distance Hauling
With A 24 Ft
Gooseneck Trailer

Call Don At
717/284-2580
Lancaster, Pa



TOP PRICES FOR DOWN, CRIPPLED AND AS IS COWS, BULLS & STEERS

Slaughtered Under
Federal Inspection
Paid On Dressed Weight

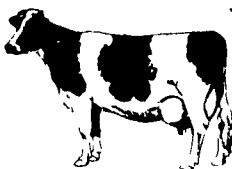
Tom Mulvaney
Livestock Trucking
(201) 454-4247

HANDLING:

Warren, Hunterdon, Sussex
And Somerset Counties, New Jersey

IN PENNA:

Northampton,
Bucks And
Lehigh Counties



LIVESTOCK HAULING

Dependable Service

6 Possum Bottom Tractors
and Trailers
Call Anytime

Vintage Sales Stables, Inc.

L. Robert Frame Manager

Office 717-442-4181
Office & Home: 215-458-5060
Office & Home: 215-458-8518

WANTED TO BUY

PIK Certificates

Exchange now for cash.
Highest Prices Paid. Don't
wait until October and get
only 95%.

215-588-0047 Eves.

SWINE PRODUCTION SALES AND SERVICE

Complete Feeding
Programs and Services

Feeding Programs to
Meet Your Individual
Needs

Computerized
Record Keeping
System

Providing Veterinarian
Service

PA. Toll Free
1-800-468-5524



419 W. High Street
Elizabethtown, PA
17022

Supplying Farm Fresh
Feeder Pigs

Marketing and Hedging
Services

Marketing of Genesis
Breeding Stock

Developing Individual
Financial Programs

Direct Dial
(717) 367-1525

LOOKING FOR MORE INCOME?

We are looking for farmers to
build new farrow to feeder pig
units and contract with us for
guaranteed income.



We Provide

- * Building Specifications
- * Sows
- * Feed
- * Vet Service and Medication
- * Complete Training in your new unit

All inquiries confidential. Send name,
address, county and phone number to:

Lancaster Farming
P.O. Box 366 - L-84
Lititz, PA 17543