

Public Auction Register

Closing Date Monday 5 00 P M
of each week's publication

FRI. SEPT. 19 - 9AM Farm Eq. New Holland Sales Stables, Inc., New Holland, PA.

FRI. SEPT. 19 - 6:30PM Feeder Pig & Feeder Cattle Sale. Keister's Middleburg Auction, along Rt. 522, Middleburg, PA.

SAT. SEPT. 20 - 10 AM Hay Sale. On PA Rt. 24 between Stewartstown & New Park. York Co. Livestock Sales Ltd. Stan & Mary Nagle, Owners.

FRI. SEPT. 26 - 7PM New Saddle & Tack. Red Carpet Horse Sale, Cambria Co. Fairgrounds, Rt. 219N., Ebensburg, PA. K. Hines, C. Rowe.

SAT. SEPT. 27 - 12 Noon Catalog Registered Horse. Red Carpet Horse Sale, Cambria Co. Fairgrounds, Rt. 219N., Ebensburg, PA. K. Hines, C. Rowe.

SAT. SEPT. 27 - 11AM Horse Sale. Keister's

Middleburg, Auction, along Rt. 522, Middleburg, PA.

SAT. SEPT. 27 - 10AM Fall Heifer Sale. New Holland Sales Stables, Inc., New Holland, PA.

SAT. SEPT. 27 - 10AM Flea Market On PA Rt. 24 between Stewartstown & New Park. York Co. Livestock Sales Ltd. Stan & Mary Nagle, Owners.

SUN. SEPT. 28 - 2PM Colonial World Class Sale '86. Location: Eastern National, MD State Fairgrounds, Timonium, MD. Sponsored by Colonial Charolais Assoc. Managed by: Buzz Garey, Garey Cattle Sales.

OCTOBER

WED. OCT. 1 - Annual Cow Show & Sale-Show 9:30AM; Sale 12 Noon. At the Belleville Livestock Mkt., Inc., Belleville, PA. Good Line of Registered & Grade Dairy Cattle.

FRI. OCT. 3 - 7PM New Saddle & Tack. Red Carpet Horse Sale, Cambria Co. Fairgrounds, Rt. 219N., Ebensburg, PA. K. Hines, C. Rowe.

SAT. OCT. 4 - 9AM Used Tack, Harness & Equipment Red Carpet Draft & Driving Horse Sale. Cambria Co. Fairgrounds, Rt. 219N., Ebensburg, PA. James Howard, Chris Rowe, Kevin Hines.

SAT. OCT. 4 - MD Polled Hereford Assoc. Red, White, Blue Sale Plus Club Calf Sale. At the Frederick Fairgrounds, Frederick, MD.

SAT. OCT. 4 - 10AM Hay Sale On PA Rt. 24 between Stewartstown & New Park. York Co. Livestock Sales Ltd. Stan & Mary Nagle, Owners.

FRI. OCT. 10 - 1:30PM PA State Graded Feeder Pigs. Carlisle Livestock Market, Exit 12 off I-81.

SAT. OCT. 11 - 10AM Flea Market On PA Rt. 24 between Stewartstown & New Park. York Co. Livestock Sales Ltd. Stan & Mary Nagle, Owners.

FRI. OCT. 17 - 6:30PM Feeder Pig & Feeder Cattle Sale. Keister's Middleburg, Auction, along Rt. 522, Middleburg, PA.

SAT. OCT. 18 - 10AM Hay Sale On PA Rt. 24 between Stewartstown & New Park. York Co. Livestock Sales, Ltd. Stan & Mary Nagle, Owners.

SAT. OCT. 25 - 11AM Horse Sale. Keister's Middleburg Auction, along Rt. 522, Middleburg, PA.

WED. OCT. 29 - 9AM Dairy Show & Sale. New Holland Sales Stables, Inc., New Holland, PA.

NOVEMBER

SAT. NOV. 1 - 10AM Hay Sale On PA Rt. 24 between Stewartstown & New Park. York Co. Livestock Sales Ltd. Stan & Mary Nagle, Owners.

FRI. NOV. 7 - 9AM Farm Eq. New Holland Sales Stables, Inc., New Holland, PA.

FRI. NOV. 14 - 1:30PM PA State Graded Feeder Pigs. Carlisle Livestock Market, Exit 12 off I-81.

FRI. NOV. 21 - 6:30PM Feeder Pig & Feeder Cattle. Keister's Middleburg Auction, along Rt. 522, Middleburg, PA.

FRI. NOV. 21 - 11AM Complete Purebred Herd Dispersal located 5 mis. S. of New Holland, 4 mis. E. of Intercourse, New

Dairy and Livestock Sales

Holland, RD 2. Terms by: J.S. Diener & Sons. Paul Snyder, Auct.

SAT. NOV. 29 - 11AM Horse Sale. Keister's Middleburg Auction, along Rt. 522, Middleburg, PA.

DECEMBER

FRI. DEC. 12 - 1:30PM PA State Graded Feeder Pigs. Carlisle Livestock Market, Exit 12 Off I-81.

SALE EVERY TUESDAY

Graded Sale
1st Tuesday each month
2 P M
Horse Auction
2nd Saturday each month
1 P M

FAUQUIER LIVESTOCK EXCHANGE

Marshall, Va
703-364-1566

HEIFER SALE

JUNE 17, 1986

7 P.M.



At Green Dragon Livestock Sale, 1 mi. North of Ephrata on State Street. 250-300 Head including purebreds and grades from calves to freshening age.

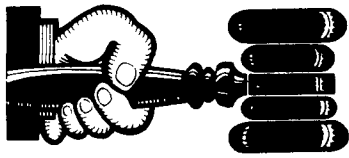
17 August & September freshening heifers. All vaccinated. Including fancy red & white holsteins from Lebanon Co.

100 head from Bob Kennedy. Big springing heifers due June, July, & August. Some purebred from some better herds in Washington, Butler & Erie Counties.

2 loads of New York heifers, all ages, some vaccinated. Some real nice groups of 300-500 lb. vaccinated heifers.

All consignments welcome. 30-day test on most heifers. Will receive heifers any time June 14, 15, 16.

Walter Risser,
Proprietor
717-733-2444 (Office)
717-838-4138 (Home)



AUCTIONEER'S DIRECTORY

DEALER IN ALL KINDS OF LIVESTOCK

Also Crippled & Down Cattle

MARLIN S. IRWIN

Quarryville, PA
PH: 717-786-3016

NOTICE

To assure that your Public Sale appears in the Public Sale Section we must have your advertisement by 4 P.M. Tuesday of each week's publication

WOLGEMUTH AUCTIONEERS

R D #2 Manheim Pa

COMPLETE AUCTION SERVICE

C H
PH 717-665-5664
BOB
PH 717-665-6684
DENNIS
PH 717-627-0571

General Auctioneers - Specializing in Liquidation of Personal Property, Equipment, Antiques, Real Estate

Reist Auctioneers

Alfred G. Reist
1050 Eden Road
Lancaster,
PA 17601

Licensed • Bonded
Lancaster 717-569-2079
Evenings/Lititz
717-627-8008

PROFESSIONAL Auctioneering

PAULE MARTIN JOHN D STAUFFER
R D 1, Box 553 217 Andrea Dr
Stevens, Pa 17578 Lititz, Pa 17543

Complete Auction Service We assist you and advise you from the planning stages of your auction to the completion of your auction

For A Consultation In Your Home Call
Paul (717) 733 3511 — John (717) 665 5099
Licensed and Bonded

KLINE & KREIDER AUCTIONEERS

COMPLETE PROFESSIONAL AUCTION SERVICE
REAL ESTATE — FARMS & RESIDENTIAL
PERSONAL PROPERTY — ANTIQUES —
FARM STOCK SALES — LIQUIDATIONS

RANDAL V. KLINE
AUCTIONEER REALTOR
717 733 1006
717 569 8701

LLOYD H. KREIDER
AUCTIONEER
717 786 3394

ROY E. GOOD, JR.
RD 1, BOX 151 A
DENVER PA 17517

PUBLIC AUCTION

FARM MACHINERY & HOUSEHOLD GOODS
SATURDAY, JUNE 7, 1986
10:00 A.M.

LOCATION: From Quarryville take Rt. 472 South approx. 5 Miles to Noble Road, turn Right, go to King Pen Road. Follow King Pen Road to Schoolhouse Road, turn Left, 4th place on Right.

KUBOTA L 245 DIESEL DT

Massey Ferguson 3 point 28 disc; 2 bottom 14" pick up plow; 18 ft. heavy duty wagon; 3 point 6 ft. blade; Gibson rototiller; clod buster; Huffy lawn mower; hedge trimmer; garden seeder; cyclone seeder; lime drill; 2 wheel dump cart; feed barrel; hay rack & feed box comb.; water tub; 10 hrp. wood splitter; JD A-90 blower; wheel barrow; 24 ft. alum. ext. ladder; metal rack; 12 ton jack; 2 ton floor jack; 6 drawer snap-on tool box; 9 drawer Craftsmen tool box; 3 hrp. 210 air compressor; Tools; ¾ hrp. bench grinder; pipe wrenches; Echo 452 VL 16" chain saw; Echo 400 EVL 14" chain saw; 40 w 225 battery charger; metal storm door; wood door; few bricks; round fuel oil tank; 275 gal. oil tank; wheel & tires for 150 Ford pickup; few bags of corn; few bales of hay & straw.

Maple table & 4 chairs; desk & bookcase comb.; swivel rocker; couch; book case; sofa, love seat, chair; breakfast set; 2 desk chairs; pole & floor lamps; table, 2 benches; wooden cupboard; 3 barrel bar; 4 bar stools; Zenith stereo; Zenith 19" color TV; RCA 25" color TV; Hutch; dry sink; oak wash stand; 3 pc. bedroom suite; metal bed & spring; cot; sewing machine; dishes; glass ware; 3 gal. crock; qt. & pt. jars; dehumidifier; humidifier; tubs; Maytag washer & dryer; milk cans; pail; picnic table; BBQ grill; 8 ft. 10"x48" picture window.

Items too numerous to mention.
NO OUT OF STATE CHECKS.
Refreshments available.

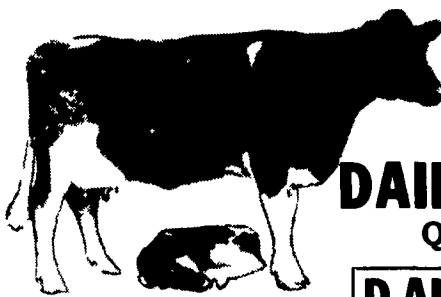
Terms by
DWIGHT McCARDELL

AUCTIONEERS CONDUCTING SALE:

Lloyd Kreider, AU-000513-L
Randal Kline, Roy Good,
Gary Shirk

KREIDER & KLINE AUCTION SERVICE

717-786-3394



A NEW DIVISION OF

SHADY LANE

DAIRY SALES INC.
QUARRYVILLE, PA

D AND D BULL BARN

Registered and Hi Grade Stock Bulls at all times, also we are interested in buying Stock Bulls at all times, all Bulls kept in individual pens. Registered and Hi Grades, Holsteins, Red-White Holsteins, Black Angus or Jerseys. We have a good selection on hand right now.

No Johnes Bulls please.
Call anytime day or nite.

Glen Fite
1-717-786-2750

David Fite
1-717-786-1725

Henry S. Overly
1-717-786-2378

102 GUERNSEYS

6 HOLSTEINS

At Auction
ENGLAND FARMS COMPLETE DISPERSAL

THURSDAY-JUNE 5, 1986

Lancaster, PA.
12:30 P.M.

GUERNSEY SALES PAVILION - 6 miles east of Lancaster on Rt. 30 at Jct. 896 Jeff Staner, Barn Superintendent, Ph: 717-392-9560, barn 717-394-2721 off. T. Howard & Thomas H. England, North East, Md. - Owners, Phone: 301-658-6198.

The England herd was founded in 1933 and has been developed by three generations of the England family. This is an outstanding herd and being built on strong cow families and the use of the breeds top sires. The current rolling herd average is 12537M 593F 46P with the average age in milking string only 3 08

SELLING 52 COWS- 20 BRED HEIFERS-
34 OPEN HEIFERS & CALVES

AMONG THE SIRES REPRESENTED ARE Kellogg Minnies Choice (11), Dutch Mill Telestar Fayette (11), Maurana Wis Telestar (10), King Arthur (9), Welcome Choice Admiral (4), Hornbacks Prince Extra (6), Raemelon Deacons Fashion (6). The majority are bred to Dan Ba Lee Choice Future and Dutch Mill Telestar Fayette

This is a heavy milking herd with good type an exceptional group of heifers including some outstanding show prospects. There will be over 45 head recently fresh or due to calve by November

Increase your milk check by adding high producing cows with high solid milk. Six outstanding holsteins selling including top Daughter of Marshfield Elevation Tony, projected 19,600M 831F as a three year old with 4 7 butterfat 3 8 protein on her last test

SALE MANAGED BY:

PA GUERNSEY BREEDERS' ASSOC.
5417 Manheim Rd.
Waynesboro, Pa. 17268
Ruth Ann John
Phone: 717-762-3301

THE MERRYMAN COMPANY
P.O. Box 566
SPARKS, MD. 21152
John B. Merryman
Phone: 301-771-4625 office
301-771-4624 home
Auctioneer: AU-000599-L

Lee Yost
P.O. Box 360
Benton, Pa. 17814
Phone: 717-925-6447