



# GAP AUCTION

FRIDAY EVE., JUNE 6  
5:30 P.M.

Located off Route 41 Lancaster Avenue Op  
posite Turkey Hill Minit Market Cross RR Bridge

ANTIQUES AND HOUSEHOLD GOODS  
SOLD AT EVERY AUCTION.

CONSIGNMENTS ON MONDAYS  
FROM 8:00 A.M. to 7:00 P.M.

**IRA STOLTZFUS & SONS, Auctioneers**

442-4936 or 442-8254

AU000907-L

CONDUCTORS ALL TYPES PUBLIC SALES

## COUNTRY PUBLIC AUCTION

ANTIQUES; FARM MACHINERY;  
TOOLS & EQUIPMENT  
'74 BUICK SEDAN

31.56 ACRES M/L FARMETTE  
Forest Hill, Harford Co., MD.

SAT., JUNE 7, 1986

To settle the affairs of JOSEPH A. CAIN, the undersigned appointed guardian will sell the following items of personal property and will offer the following described Real Estate at Public Auction on THE PREMISES located at 419 E. JARRETTSVILLE ROAD, FOREST HILL, Third Election District, Harford County, Md.

DIRECTIONS: from U.S. Rte. #1 (Conowingo Rd.) 2 miles north of the Town of Bel Air, turn west on Jarrettsville Rd. (old Md. Rte. #23 - at St. Ignatius Catholic Church) and travel 1/2 mile to property (between Forest Hill & Hickory) - signs posted.

### ORDER OF SALE

PERSONAL EFFECTS TO BE SOLD AT 10:00 a.m. (EDST):

FARM MACHINERY, TOOLS & EQUIPMENT: FARMALL 200 Tractor w/ Asst'd. 2 pt. Hitch Equip.; Wagon; Plow; Disc; Spreader; Cultipacker; Road Scraper; 2 pt./3 pt. Hitch Adapter; CUB CADET 104 Riding Mower; Push Mower; Chainsaw; Fencing Supplies; LGE. ASSORTMENT OF HAND SHOP, LAWN, GARDEN & FARM TOOLS & SUPPLIES.

ANTIQUES & HOUSEHOLD EFFECTS: Chests of Drawers; Cedar Chest; Piano Box; Butcher Block; Blanket Chest; Oak Car LR Set; Marble-top Stand; Treadle Sew. Mach.; Corner Cupboard; Pie Safe; Cast Ironware; Lamps; Drop Leaf Table; Wood Stoves; Rugs; Metal Beds; Bells; Chinaware; Glassware; many old & interesting & useful items.

TERMS: PERSONAL EFFECTS - CASH OR CHECK (I.D. Required)

AUTOMOBILE TO BE SOLD AT 11:30 A.M.: 1974 BUICK Century 4-dr. Sedan. TERMS: Purchaser of Automobile responsible for compliance with all Maryland State Inspection Laws. Sold AS IS.

REAL ESTATE TO BE OFFERED AT 12:00 NOON (EDST): 31.56 acres m/1 IN FEE Farm Land zoned "AG" w/ on-site well & septic. Frame Farm Hse. w/ 4 BR's, 1 Bath, LR, DR, Kitchen, Laundry & Front Porch. 2-car Garage; Bank Barn; Machine Shed; Sm. Sheds. Mostly Cleared. Pleasant Farmette in ideal location.

INSPECTION: at OPEN HOUSE on SUNDAY, JUNE 1 from 2:00 p.m. to 4:00 p.m. or by appointment with Auctioneer.

TERMS - REAL ESTATE: \$10,000 CASH, CERTIFIED or CASHIER'S CHECK as Downpayment at Time of Sale with the balance to be paid within 60 days. Detailed terms available. Offered in AS IS condition.

AUCTIONEER'S NOTE: This is a good-time Country Auction with many useful & collectible items from an old Harford County family. The Real Estate offers a workable small farm in a convenient location, central to Harford County. Plan to attend!

GUARDIAN:

**HELEN R. (JEAN) JASPER**

OWNER:

**JOSEPH A. CAIN**

O'NEILLS AUCTION COMPANY

Forest Hill, Md. 21050

301-838-6980/879-4530

Refreshments provided by the Ladies of St. Ignatius Church.

Plenty of Parking

Not responsible for accidents on premises

## GOOD'S AUCTION

111 North Maple Ave. Leola  
Hay and Straw Sales

Every Wed. At 12 o'clock noon

Farm Machinery sales first Wednesday of every month only. Feb. thru May. Further sales dates will be announced later.

Hardware and tools 9:00 o'clock

Building Material 11:30

Lawn and Garden 12:00

Followed By Machinery

No Household Goods

No Junk

No Out Of State Checks

GOODS AUCTION

111 North Maple Ave.

Leola, PA. 17540

Auction House

#000014-L

## PUBLIC AUCTION

REAL ESTATE &  
2 TRACTS OF LAND  
ANTIQUES & HOUSEHOLD GOODS  
GARDEN EQUIPMENT & MOWERS  
SATURDAY, JUNE 7, 1986  
9:00 A.M.

LOCATED: 8 miles north of York, PA on Lewisberry- Corner of Lewisberry and Jug Road in Conewago Township.

### REAL ESTATE

Partial #1- Corner lot on Lewisberry Road and Jug Road having road frontage on Jug road of 225 feet and road frontage on Lewisberry and Buck Road of 200 feet. Improved with a 3 room cement block house with large basement, living room, kitchen and bedroom, baseboard oil-fired hot water heater, large workshop and storage buildings surrounded with large shade trees. This property has a very pleasant setting. Conewago Township, York County, Northeastern School District.

Partial #2- 4 acre wood lot on Buck Road with 185 feet of frontage and approximately 1200 feet in depth. This land is wooded and has a gradual slope. Conewago Township, York County, Northeastern School District.

For Inspection of Real Estate, phone 764-6412 in the daytime; and 266-1671 in the evening.

TERMS: 10% down- Balance in 45 days.

### ANTIQUES & HOUSEHOLD GOODS (Partial Listing)

25 music boxes, 25 Kerosene lamps (large and small), wooden oak desk, oak dresser, hanging corner cupboard, oak rocker, oak chest of drawers, oak extension table- 5 legs with 5 boards, wooden boat jack, 4 oak dining room chairs, plank bottom chairs, collection of shot glasses, oak stand, crocks and jugs, poster rope bed, oak bedroom chairs, cherry seeder, Ingram mantle clock, quilting frame, oak cabinet, breakfast set, meat bench, portable TV's- colored and black and white, school desks, pole lamps, vinegar cruets, glassware, bedding, blankets, comforts, utility cabinet, flatware, ringer washer, lawn and porch chairs, Christmas decorations, and many items not mentioned.

2 machinist tool boxes and tools, wood lathe, planer, jig saw, drill press, grinders, levels, squares, wrenches, portable air compressor, routers, files, oak cabinet, planes, drawing knife, seales, rope, wooden wheels, grind stone, large assortment of garden tools, miscellaneous lumber and firewood, 3 David Bradley garden tractors with attachments, garden sprayers, saw buck, saw blades, straw shudder, one-hole corn sheller, plate mill, garden seeder, one-wheel garden tractor, 10 lawn mowers, rotary and reel, riding mowers, shovel plow, baskets, 1 horse planter, wheel barrels, 2x6 lumber, and plywood.

Farmall H. tractor with hydraulic and belt pulley, John Deere L tractor with brass radiator, plow and cultivator, section of disk, spring harrow, new lawn dump cart, roller, step ladders, Echo & Wards chain saws, walking plow and many more items.

Winchester Model 24-12 gauge (5703); Remington 30.06 with Weaver scope; Victor 12 gauge single shot gun; Gun cabinet for 6 guns; Antique pistol with folding trigger; American 38 revolver; Hunting knives; Ammunition. This is only a portion of what we have to sell.

TERMS: CASH OR GOOD CHECK

**MRS. WM. TREIBER**

Auctioneer: Blaine N. Rentzel

Emigsville, PA

717-764-6412

PA Lic. #761-L

## Public Auction Register

Closing Date Monday 5 00 P M  
of each week s publication

SAT AUG 9 - 12 Noon 7th  
Annual Prince Plaudit  
Production Appaloosa

### GOING OUT OF BUSINESS



## PUBLIC SALE

OF GUNS AND SUPPLIES  
TUESDAY EVE., JUNE 3, 1986

At 7:00 P.M.

Located at 2824 Stumptown Rd., 1/2 mile west of Rt. 772 turn at Mascot Mill, close to Stumptown Mennonite Church, Lancaster County, PA.

NEW GUNS - 12 Ga. H & R Model 088 Single Shot; 12 Ga. Winchester XTR Model 1300; 12 Ga. O & H Model 6 Norinco; 243 Remington Model 7600; 30-06 Remington Model 7600; 30-30 Marlin Model 336 CS; 22 LR Marlin Model 780.

USED GUNS - 45 cal. Flintlock; 410 Springfield Model 1180; 12 Ga. Ithaca Model 37; 30-06 Remington Model 760 with scope; Scopes; Hand Throwers; License Holders; Hot Seats; Assorted Ammo.; Cleaning Accessories; Muzzle Loader Supplies; Gun Cases; Shirts; Vests; Truck Racks; Buck Knives; Adding Machine; Antique Show Case with Glass Top and Sides; and many other articles not mentioned.

Terms By:

**AL'S GUN SHOP**

Al Biddinger -  
Owner

AUCTIONEERS:

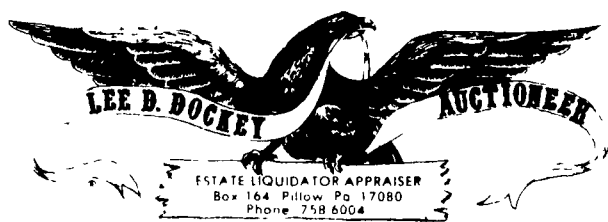
Robert E. & Jeffrey R. Martin,

656-7770

AU000580L

Frank L. Steller

No Out-of-State Checks



## PUBLIC AUCTION

OF  
ANTIQUES & COLLECTIBLES  
WEDNESDAY JUNE 4, 1986 10:00 A.M.  
LOCATION: SHOP & PLAY HALL, ROUTE 209, LYKENS, PA.  
FURNITURE

Low Dry Sink; (2) Schoolmaster's Desks - 1 w/Bookcase Top; Flour Chest w/Original Graining; Empire Chest w/Original Red Stippled Paint; Jenny Lind-Type Rope Bed; Soft Wood Hanging Corner Cupboard; Plank End Wash Stand; Brass Bed; 4-Drawer Half Column Sheraton-Type Chest of Drawers w/Original Red Paint; Cannonball Rope Bed; Plank End Jelly Cupboard; Victorian Bed; Victorian Rose Carved Sofa; 6-Leg Dropleaf Table; Mission Oak Sofa; Cherry 1-Drawer Splay Leg Stand; Lg. Victorian Double Glass Door Bookcase; Oak Ice Box; Round-Top Trunk; Small Early Ornate Black Cresta Kitchen Coal Stove; Set of 6 Oak High Back Pressed Back Chairs; Oak Round Glass China Closet; Kitchen Cabinet; Etc.

### MISC. ITEMS

Copper Apple Butter Kettle; Coffee Grinder; Wooden Butter Bowl; Brass Bucket; Cast Iron Toy Caterpillar; Misc. Sleigh Bells - Including Double Row String of 48; Assortment of Pocketwatches; Violins; Banjos; Mandolins; Koch Accordion; Collection of App. 80 Early Cast & Wrought Iron Trivets; Diamond Dyes Wooden Adv. Case; Paperweights; Drawknives; Brass Steam Whistles; Telephones; Candle Molds; Ice Cream Scoops; Tobacco Cutter; Roseville Pottery; Assortment of Yellow Ware; Postcard Albums; Selection of Quilts & Comforters; Model 11 Aladdin Lamp; Country Store Hanging Lamp w/Glass Shade; Books - Including Selection of Civil War, Indian, Northumberland County History & Dauphin County Biographical; Etc.

### GUNS

Marlin Model 43, 12 Ga.; Remington Model 14; Winchester Model 1912, 16 Ga.; U.S. Springfield Army Model 1903; Colt's Pt. F.A. Mfg. Co. Revolver; Wessen Springfield Pat. Date 1860 Revolver; Other Misc. Guns.

### GLASS & CHINA

Carnival Glass; Gaudy Dutch War Bonnet Pattern Cup & Saucer; Misc. Pressed & Pattern Glass; Selection of Collector's Plates by Lambert, Fenton, Haviland Limoges, Copenhagen, Delft, Bareuther, Etc.

TERMS: CASH. PERSONAL CHECKS ACCEPTED ONLY FROM PERSONS HAVING AN ESTABLISHED ACCOUNT W/AUCTIONEER OR APPROVAL PRIOR TO DAY OF SALE.

EXHIBITION: 8:00 A.M. TO 10:00 A.M. DAY OF SALE.

AUCTIONEERS: DOCKEY #AU229L, DOCKEY #AU1683L & DEPPEN #AU1957L

Sale. Rimwood Farm, Rt. 1. Strattanville, PA. Dave Stahlman.

SAT. AUG. 9 - 10AM Hay Sale on PA Rt. 24 between Stewartstown & New Park. York Co. Livestock Sales, Ltd. Stan & Mary Nagle, Owners

FRI. AUG 15 - 6:30PM Feeder Pig & Feeder Cattle Sale. Keister's Middleburg Auction, along Rt. 522, Middleburg, PA.

FRI. AUG. 15 - 5:30PM Gap Auction, Antiques & HH sold at every auction. Located off Rt. 41. Lancaster Turkey Hill Mint Mkt., cross RR bridge. Ira Stoltzfus & Son, Aucts.

SAT. AUG. 16 - 9AM Annual Consignment Sale at Little Kutztown Community Fire Co., 1 mi N. of Myerstown, on Rt. 645. Local Auctioneers. Henry Brubaker, Chairman.

SAT. AUG. 16 - 10AM Flea Market on PA Rt. 24 between Stewartstown and New Park. York Co. Livestock Sales Ltd. Stan & Mary Nagle, Owners.

## SHERIFF SALE

PERSONAL  
PROPERTY OF  
DONALD  
MILLER

FRI., JUNE 13

On the Don Miller premises- RD #1, Andreas, PA 15211. Schuylkill Co

FORD TRACTOR 6600

FORD PICK UP

TRUCK