

**FARMS FOR SALE  
GENTLEMAN FARMS**

For the individual desiring the finest in country living. Spectacular Country home, 3 full baths, jacuzzi, 3 fireplaces, large stately rooms, inground pool, stable, tack house, large garage, all meticulously cared for. Located in breath-taking mountain top setting on 60 acres. Offered at 195,000. Sch. County.

Lovely 95 Acre Farm, 4-5 bedrooms, Fam. room w/cathedral ceil., stone fireplace, stocked pond, bank barn, stream, private setting. Offered at 180,000. Sch. County.

**B & B Farmette - Price Reduced**  
Super 4 bedroom farmette - Just off I-78. Custom cherry kitchen, Fam. room, stone fireplace, 2 full baths, New garage and shop, small bank barn, more. This property must be seen. 5 acres, great view, Reduced to 89,500. Berks County.

**DAIRY FARMS**

192 acre dairy operation, 3 silos, pretty farmhouse, large bank barn, implement buildings, Nice set-up. Offered at 185,000. Bradford County.

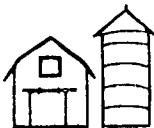
117 acre dairy farm in the heart of rich farmlands. 4 bedroom brick farmhouse, modern kitchen, fireplace, more. This farm has much to offer the serious dairy farmer. Large bank barn, two silos, all equipment in very good condition. Buildings well cared for. Offered at 250,000. Berks County.

120 acre dairy farm. Another farm for the serious dairy farmer. 3 bedroom home, log construction, pond, stream, 20x70 Harvestore, 20x36 Harvestore hi-moist., 16x50 conc., Large bank barn, various outbuildings, Beautiful setting, offered at 250,000. Berks County.

**General Farm**

62 acre farm, 4 bedroom farmhouse, log construction, Bank barn, silo, loafing barn. Substantial blacktop rd. frontage, stream. Very picturesque setting. Offered at 150,000. Berks County.

For more information, or help in selling your farm or rural property, call



"Slim" Grossman  
Farm & Land Specialist  
**PENNSYLVANIA  
FARM REALTY**  
Res-717-754-7343  
Office 1-800-831-2244

**LARGE SELECTION OF  
SHOWPLACE DAIRY FARMS**  
And Others In The Mohawk Valley and Central NY  
- OVER 200 FARMS AVAILABLE -  
SEND FOR BROCHURES



(518) 922-6301 OR (518) 922-8899

**PENNA FARMS  
FRANKLIN CO.**

119 Acre Limestone Soil, 40 tie stalls 2" pipeline milker, 600 gal tank, 2 silos large remodeled 5 BR frame dwelling (2 family potential) seasonal stream, road frontage Beautiful setting

107 Acre General, 86 acres tillable, 10 pasture 8 wooded, large bank barn, wagon shed with attached garage 3 BR brick dwelling, 2 streams

100 Acre Dairy limestone soil 9 stall milking barn DeLaval glass pipeline milkers Mueller tank, lounge area for cattle, trench silo, road frontage NO DWELLING Shippensburg area

**CUMBERLAND CO.**

165 acre modern dairy farm, double 4 Herring Bone parlor, 99 free stalls, 2 20x60 Stave silos w/unloaders, implement storage, road frontage, MODERN 3BR dwelling w/fireplace and family room, attached 2 car garage

137 Acre Dairy, 52 stalls w/pipeline milkers, bulk tank, silo, heifer barn, limestone soil, road frontage, 4 BR dwelling 58 additional acres avail

95 Acre General Farm, 2 story Colonial brick and aluminum dwelling w/brick fireplace and car port Nestled among the trees Secluded from neighbors but adjacent to mountain for the individual wishing to have horses for riding Fertile sandstone soil, 20 acres wooded w/timber, large horse barn w/16 stalls and other outbuildings

80 Acres, 50,000 broiler building, bank barn implement storage, limestone soil, 50 acres + tillable pasture & wooded, stream, modern 4 bedroom dwelling

Charles Wenger, GRI, 263-0945  
George Ebener 249-4979  
Wilbert Diehl 776-7707

**GEORGE L. EBENER & ASSOCIATES REALTORS**  
139 W. High St., Carlisle, Pa.  
Ph (717) 243-6195

**BRING YOUR HORSES**

We have the barn & pasture! Also a pond for fishing, a 3 car garage, and a 4 BR 2 story house on 25 acres w/a million dollar view. Gap area. Asking \$160,000.



717-442-4114  
717-687-8286  
717-354-6416

**BERKS COUNTY HORSE FARM** - 30 minutes from Downtown Reading Features a nicely remodeled 5 Bedroom, 3 1/2 bath home retaining the charm of its 1790 origin. Very private setting Surrounded by 94 acres of fenced pastures, some woods, some open land. Pond and stream. Large bank barn converted with box stalls. Priced at \$255,000. Call to inspect.

**HORNING FARM AGENCY, INC.**  
Morgantown, Pa.  
215-286-5183

**CENTRAL PA FARM LISTINGS**

**BLAIR COUNTY**

**GENERAL FARM** - 245 acres (171 tillable, 8 pasture, 66 woodland and site area) sound 2-story brick house, tenant house, 2 story bank barn (all steel and cement), productive land all contiguous with buildings Tyrone area \$277 500

**CENTRE COUNTY**

**GENERAL FARM** - 197 acres (153 tillable, 9 pasture, 10 woodland, balance lowland and site), limestone ground, 2 story frame house, large bank barn with new superstructure, good outbuildings, small stream Buffalo Run (Route 55), 10 minutes from State College \$259,500

**FARMETTE** - 36 acres (31 productive tillable land, balance site and pasture) sound and partially remodeled 2 story home, bank barn outbuildings, small stream Penns Valley Area Fairly priced at \$90,000

**FARMETTE** - 29 3 acres (8 tillable, balance pasture, woodland and site), at tractive 2 story home, bank barn, large pole-type enclosed implement shed, nice private setting Axemann area \$119,500

**FARMETTE** - 31 acres (22 tillable, 6 pasture, 3 site) near Aaronsburg with sound 2-story log home with aluminum siding, good bank barn and outbuildings, small stream, nice setting \$112,500

**DAIRY FARM** - 122 acres (97 tillable, 22 pasture, 3 site and roads), mostly Hagerstown ground, sound 2 1/2 story house, bank barn with 34 tie stalls; 96-stall free-stall barn, pipeline milker, 1,250 gallon bulk tank, 20'x60' and 14'x40' silos with unloaders, 20'x40' Harvestore (under lease) Priced at \$182,500 Also available with an additional 95-acres for a total of 217 acres (130 tillable, 47 pasture, 36 woodland, 4 site and roads) and a second barn, 3 additional implement sheds and 1 silo for a total price of \$247,500 Near Stormstown

**RECREATIONAL OR FISH FARM** - 137 acres (62 tillable, balanced pasture and woodland), 3 large ponds, large recreational building, 2 story house (fair condition) 3 large ponds, large recreational building, 2-story house (fair condition) 2 trailers secluded setting Near Spring Mills \$149,500 Ideal for fish farming

**GENERAL FARM** - 155 acres (117 tillable, 32 woodland balance site roads and stream), sound 2 story house bank barn, 32'x344' 1 story poultry building, outbuildings, excellent producing ground small stream \$212,500 Can be subdivided

**GENERAL FARM** - 215 acres (20 open balance wooded) 2 story home several pole sheds (one with horse stalls) hay shed and several other outbuildings Secluded setting, easy access, good hunting Port Matilda \$135 000

**GENERAL FARM** - 48 acres (30 open, 16 wooded 2 site), an excellent completely remodeled 2 1/2 story farmhouse sound bank barn very good outbuildings small stream Spring Mills Additional land is available Ideal for horses \$149,500

**HUNTINGDON COUNTY**

**DAIRY FARM** - 338 acres (202 tillable, 58 pasture and lowland 78 woodland) sound 2 story brick house bank barn with 37 tie stalls, free stall barn with 51 stalls and bunk feeder 20'x60' and 20'x50' silos 15'x40' Grain o-matic silo for high moisture corn farm shop, heifer barn, 2 implement sheds, stream frontage pipeline and bulk tank, silo unloaders, gutter cleaner Very well maintained \$375 000 OWNER FINANCING

**BEEF OR SHEEP FARM** - 306 acres (approximately 140 tillable, 117 pasture, 47 woodland 2 site) 1 story brick home, 2 barns, garage, 2 silos, 2 large implement sheds, excellent water supply, 3 ponds \$259,500 Additional land available

**DAIRY OR GENERAL FARM** - 66 acres (55 tillable, balance pasture and site) sound 2 story aluminum sided house, bank barn with 43 tie stalls new gutter cleaner, milkhouse, new 40'x40' implement shed, 14'x60' Lancaster silo pond swimming pool \$105,000 Also available with 129 acres (70 tillable 53 pasture) \$140 000

**RIVER BOTTOM LAND** - 55 acres (45 6 tillable), frontage on old Route 22 substantial Juniata River frontage Ideal for truck crops and roadside marketing OWNER FINANCING \$99,500

**LYCOMING COUNTY**

**GENTLEMAN FARM** - 36 acres (26 pasture, woodland and site), very nice 2 1/2 story house, 2 story bank barn 36'x140' one story barn in good condition 20'x60' ribstone silo with unloader 2 very good pole buildings Near William sport \$107 500

**LIVESTOCK OR DAIRY FARM** - Near Lairdsville 270 acres (165 level, very highly productive tillable) Good 2 story house, bank barn 60'x120' cattle barn suitable for freestalls 20'x60' Harvestore 2 streams Owner financing, \$325 000

**RIVER BOTTOM FARM** - 93 acres (71 tillable), excellent stone and frame house sound implement shed, workshop building, large bank barn with 25 stanchions, 3 500 bushel grain bin, substantial Susquehanna River frontage Class I land 10% OWNER FINANCING, Muncy area \$250 000

**RIVER BOTTOM LAND** - 41 acres (38 tillable) with road frontage on Pa Route 405 This is a portion of the farm listed above 10% OWNER FINANCING \$82,500

**NORTHUMBERLAND COUNTY**

**FARMETTE OR LIMITED ACREAGE DAIRY FARM** - 27 9 acres (19 tillable balance pasture), sound 2-story home, good 1 1/2-story Cape Cod home, bank barn with 35 stalls, implement shed Near Milton \$99 500 Also available as a 22 acre unit with 1 1/2 story house for \$65,000

MANY LAND PARCELS AND FARMETTES AVAILABLE  
CALL OR WRITE FOR THE FREE LIST

**FARM AND LAND DEPARTMENT**

Fred Strouse (814) 364-1705  
(Bedford) Richard D. Reed (814) 839-4271  
(Huntingdon) Rachel Port (814) 669-4194

Don Myers (814) 422-8111  
Mel Rockey (814) 466-6688

Frederick J. Kissinger, Realtor  
William H. Leonard, Realtor  
Ralph F. Brower, Realtor  
245 S. Allen St.,  
State College, PA 16801  
(814) 234-4000

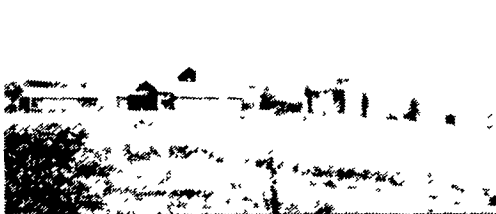


The Professionals in Farm Real Estate Service  
SALES • RENTALS • APPRAISALS • PROPERTY MGMT • DEVELOPERS • FARMS

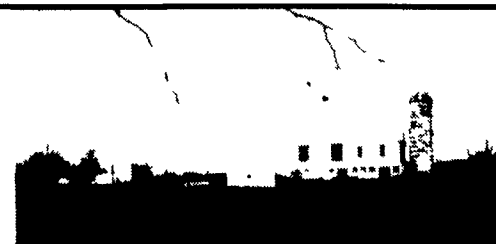
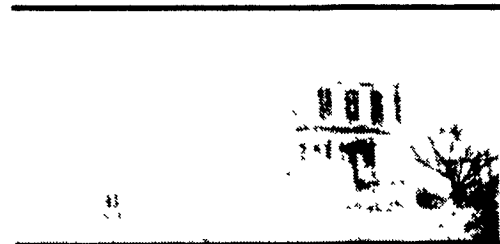
**"NOW IS THE BEST TIME"**

To inspect these extraordinary farms; where the corn is young & you can really see what you are getting.

If you have the physical help to farm this type of an operation then let me show you a tremendous opportunity Total 342 Ac w/about 235 T A Has 2 good houses huge bank barn & a 60 tie stall addition w/rubber mats & manure storage Large blue silo & 2 14x54 concrete silos, 2 nice streams and nearly level land in high state of cultivation (He boasts 170 bu corn/ac) Punch line At their age & physical condition & with no children to take over it leaves an excellent opportunity for a younger man wanting his own operation at very reasonable interest rates and a price you can truly "live" with! Note Large Equip Shed Call me today for more details! Possible Turn Key Operation



316 Ac - 228 Presently tilled on two adjoining farms #1 Has an older 5 BR two story brick & stone mansion - large heifer barn & 66 stanchion bank barn w/pipeline tank, barn cleaner etc #2 has 4 B 2 story (very nice throughout) house & bank barn for heifers, etc This is mostly level limestone (highly productive) soil w/small stream Very Nice Setting! This package comes with financing possibilities and/or turnkey operation This partnership has been in business many years



Large Picturesque brick house (new roof) lots of big trees in front yard overlooking some of the nicest level limestone soil in the country! A large obsolete dairy barn - new equip shed - three car garage and approx 1 8 mile of road frontage Very nice setting! Cash deal only! Total 206 Acres

21 Ac Farmette (presently milking 37 cows) bank barn & tobacco shed and 12 ac tillable, balance = Pasture w/pond Large 2 1/2 story frame house (new siding & remodeled) priced right - in good neighbor hood

Any one of the above farms can be taken over immediately in mid-season.

P.S. Please call for info. on another executive style farm, over 400 acres available.

**MAHLON OBERHOLTZER**  
Real Estate Agency  
Smoketown, PA  
717-392-1177