

Eckroth Bros. Farm Equipment



RD 2 Box 24A, New Ringgold, PA 17960

717-943-2131

7:30-5:30 Mon.-Fri. 7:30-4:00 Sat.

USED EQUIPMENT

USED TRACTORS

JD Model B w/Cultivators
Farmall H
Farmall M Diesel
Case 1270
IH 1066 Black Stripe w/Cab
Ford 9N
IH 5 ~~SOLD~~ ce
IH 684, Nice

USED COMBINES

Int. 1440 Combine
Int. 715 Diesel w/4 row narrow head, nice
MF 750 w/grain head
Int. 715, late model
1979 Int. 1460 rotary combine w/6 row corn head

USED EQUIPMENT

Int. 175 Manure Spreader
Int. 710 5 F Auto. Reset Plow
Int. #56 Blower
900 Badger Blower
NH #518 Manure Spreader
Ontario Hoe Drill
(2) IH 510 16x7 Comb. Grain Drill

NEW GEHL EQUIPMENT

960 Forage Box w/roof
1540 Forage Blower

Dismantling Combines for parts over 400 all makes and models Call before you come.

All Combines Sold—free parts for one season if in our parts lot.

IH: 915, 815, 315, 205, 203, 503, 403, 303, 93, 91, 151, 101, 141, 127, 125, 82, 76, 74. JD: 6600, 105, 95, 55, 45, 40, 30, 25, 12A. MF: 510, 410, 300, 35, 92, 82, 72, 90, 80, 70, 60, 27, 26. AC: Gleaner, L, M, K, G, E, C, C2, A, 60, 66. Oliver: 545, 535, 430, 40, 35, 33, pull type. NI: Uni, 705, 702, 701, Combine shellers & harvesters Ford: 622, 630, pull type. Case: 960, 660, 600. NH: 975, 985. NM: 5297, MM Uni, White 8600, Massey 750D.

COMBINES

MF 510 Gas, cab, QT, grain head
MF 35 w/8' grain head
Case 600 w/10' grain
MF 410 w/grain & 4R 30" corn
MF 510 diesel quick tach w/cho. ~~SOLD~~ 6R or 4RW or 4R 30" & grain.
JD 6600, side hill, diesel, one owner, 2700 hrs.
JD 6600 diesel, hydro, rotary screen
JD 6600 diesel, gear drive
JD 7700 diesel, hydro w/rigid grain head, \$7,950.
JD 4400 diesel w/rigid grain head, \$7,500.
JD 55 w/2R & grain, \$2850
JD 45, late model w/3300 quick tach throat & grain, 2R corn, \$5850.
(2) JD 45 squareback w/10' grain & 2R corn, \$3875
2 JD 45 roundback w/10' grain & 2R corn, \$2250
For JD 4400, 6600 & 7700 combines, we have 3 JD flex heads & rigid heads, 4R wide, 4R narrow, & 6R narrow, prices depend on heads, you pick
IH 915 diesel, turbo, hydro w/grain & 4 or 6R head.
IH 715 duals, 4R & grain
IH 403 hydro w/4R 30" & grain, \$5500
2 IH 105 w/10' & 2R corn, \$2500.
IH 93 w/10' grain, \$2,000
IH 205, 10' flex & 2R, \$3,000.
IH 80 pull types, auger feed w/PTO & bin, from \$900 to \$1600.
MF 510 diesel quick tach w/grain, \$5500
MF 300 quick tach w/grain & 2R corn, \$3875
We have 4R 30" & 4R 38" corn heads for MF 510 & 410
MF 8 ~~SOLD~~ & grain, \$1500

Gleaner M diesel w/grain, 4R, 38" & 4R 30" corn, \$11,500.
Gleaner C2 w/254 Perkins diesel ~~SOLD~~ flex head, late model, lot of new parts, \$5875.

2 Gleaner C2's w/grain & 4R corn, from \$3500 to \$4500.
Gleaner E3, grain & 2R, new motor, \$5500.
Case 660, cab, grain, 2R or 3R 30"

Case 600 w/cab & 10' grain head

TRACTORS

IH 340 w/PS, fast hitch
IH 1066 Dsl., cab, dual PTO, 3760 hrs. w/complete motor overhaul, rebuilt injector pump, new oil pump, will show bills, \$9500.

Farmall Super M w/WF
IH 1206 Diesel, WF & big rubber, \$5775

Farmall C, real nice, \$950
Ford 3000 Diesel

Farmall Super C w/hyd. & pulley \$975
Massey 1080 D

IH 340 w/fast hitch
Ford 6000 Diesel \$2475
Massey Pony Pacer w/1R cult. & 1 btm. plow \$1485

AC D19 Diesel w/WF
Ferg. 30 w/3 pt.
Farmall 560 Diesel \$2850
Ford 900, P/S, real clean
AC D17 Diesel snap coupler

IH B504 High Crop
IH ~~SOLD~~ s
Moline M5 3 pt. & PS

ROTARY MOWERS

3 pt. 6,7 & 8'
Also pull types

SPREADERS

Case Ground drive, \$350
IH 225 bushel, PTO, \$500

DISC HARROWS

8,10,12 & 14' Wheel Disc
3 pt. 7'
7 & 8' drag discs

FORAGE HARVESTERS

IH 830 w/2R 30" corn
JD 3 ~~SOLD~~ & Pick up
IH #8 flail chopper

IH 720 w/2R, 30" & p.u. head, used 3 yrs., always kept in A-1 cond.

AC 720, 2RN & pickup \$750
JD 34 1R & pickup \$875

WIDE FRONT ENDS

Farmall H & M
IH 340
Massey 101, 30 & 33
AC D17
WD 45
WD

AC C or CA
Farmall C or Super C, 200 & 230
Ford 6000 WFE

CORN PLANTERS

2 IH 56 4R, \$750 & \$875
JD 1240 Plateless, \$1075
IH 456, 4R, \$450
MF 2R, 3 pt. \$150

CORN PICKERS

1&2 Rows Pull Type & mounted. Also, 50 for parts

GRAIN HEADS

8, 10, 11, 12, 13, 14 & 15'

TRACTORS ALL WITH LOADERS

IH TD14 Crawler Loader, exc. undercarriage, \$3850
IH 504 Utility w/3 pt. & live PTO, power steering w/IH 2000 loader
Farmall Super C \$1,675

New 3 Pt. Equipment

JD 450 Crawler loader, \$8,950.
Farmall M w/PS \$1,850
Farmall 200 w/fast hitch & live pump, \$2,000.

CORN HEADS

2, 3, 4, and 6 Rows
PLOW

(15) From 2-7 Bottom
HAYBINES & RAKES

JD 1209 9', \$2,450
NI Rotobar Rake, \$850
3 JD Rotobar Rakes, \$450 to \$675

IH 99C ~~SOLD~~ \$1,875
Gehl 9', \$875
Hesston 9' self-propelled, \$2200

IH Wheel Rake, \$625
JD Rake
NH 56 Rake, \$950
NH 461 \$750
NH 489 \$3500
NH 474, 7', \$3750
NH ~~SOLD~~ \$3250
NH 256 Rake, \$1250
Hesston 10' Hydro-swing, center pivot hitch, \$2850.

NI Cut/ditioner, 7', \$975.
IH Rake w/front dolly wheel, \$785.
NH 477, 7', \$2150

MISC.

Badger 3 btr forage wagon w/roof
IH fast hitch balanced head mower
Pull type road grader
Sickle bar mowers, 3 pt semi & trailer types
Hay Balers, with or without throwers, \$300 & up
NI 12' Flail Stalk Cutter, \$800.
IH Loaders to fit C, Super C, 200, 230, H, M, 300, 350 & 300 & 350 utilities
Ferg. loader w/hyd bucket & front pump \$650
12 Tooth Trailer type chisel plow
JD 16' wheel harrow \$1475
IH 315 14' cultmulcher

30 YEARS AGO

Our Dad Bet His Future On This Unconventional Diesel Engine... HE WON!



YOU CAN BE A WINNER, TOO!

Buy DEUTZ Diesel Powered Equipment Or Power Units And Get The LOWEST LIFE-CYCLE COSTS In The Industry - Plus - Kick The Hassles Of Liquid Cooling Systems.

Think About It... Our Dad Did And He Went With DEUTZ



Serving Eastern and Western PA with retail, wholesale and O.E.M. sales

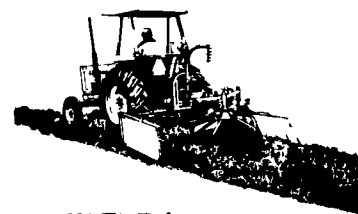
Stauffer Diesel Inc.

R.D. #3, Box 659B

Pleasant Valley Road

Ephrata, PA 17522
(717) 738-2500

IT'S A HAY DAY AT GRUMELLI'S ON NEW HESSTON HAY EQUIPMENT



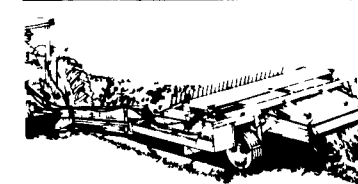
5 Bar 9 1/2 Ft. Rake.

\$2,650



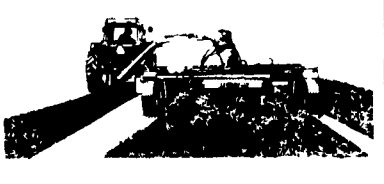
5530 Round Baler Self Propelled. Until May 1st

\$5,600



1071 Mower Conditioner 7 Ft.

\$5,700



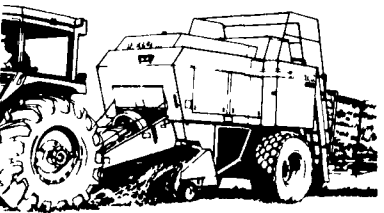
1091 Mower & Conditioner 9 Ft.

\$6,500



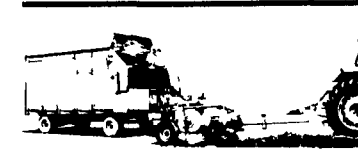
4600 Baler

\$7,650



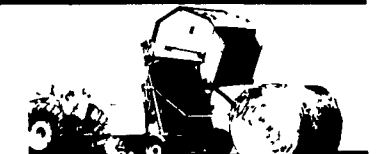
4800 Big Baler

\$41,900



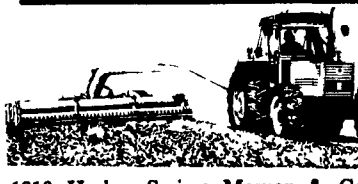
16 Ft. Forage Box

\$3,595



5545 Round Baler

\$9,900



1010 Hydro Swing Mower & Conditioner

\$7,600



1150 Mower & Conditioner 12 Ft.

\$9,050

GRUMELLI FARM SERVICE

Quarryville, Pa.

717-786-7318



HESSTON THE PRIME LINE

DISMANTLING TRACTORS FOR PARTS Harvesters and Corn Heads for Parts

IH: 1256, 666 Hydro, 806, 660, 656, 560, 504, 404, 460, 450, 400, 350, 300, 340, 240, 230, 200, MTA, M, H, C, BN, A, Cub, F30, F20, F14, F12. JD: 4010, 3010, 2010, 720 D, 70, 60, 50, A, B AC: 180, D17, WD, WC, CA, C, B. MF: 1155, 90, 85, 444, 333, 44, 33, 30, 20 Case: 400, 300, DC, SC, VAC. Ford: 6000, 4000D, 860, 800, 8N, 9N Oliver: 1800, 88, 77, 70, 60. Crawler: D2 Cat & Oliver

KEITER'S FARM MACHINERY

R.D. 1, Halifax, PA 17032 Rt. 225
20 mi. north of Hbg.
Phone: 717-362-9574

Dismantling 50 pickers for parts
POSITIVELY NO OUT OF STATE PERSONAL CHECKS