

# KUHN EQUIPMENT... PRICED RIGHT WHILE THEY LAST

KUHN MODEL GA 300 GT 3 PT. HAY RAKE



10'6" Wide

Fitted with an articulated frame for quick and easy handling and 9 tine arms to the rotor the GA 300 GT GYRORAKF is a high output machine. 15/6x6 balloon tires fitted as standard.

MODEL GA 300 GT

Reg Price \$1,795

DISCOUNT SALE PRICE **\$1,675**

KUHN MODEL GA 402N RAKE

Due to its large working width the GA 402 N produces an ideal swath for round balers and high capacity forage systems. The articulating 3 point frame allows the GA 402 N to adopt the regular raking characteristics of a fully towed machine. 15/6x6 balloon tires fitted as standard to give improved stability when working on soft or irregular ground.



13' Raking Width  
3 Pt.

Serial No W0080  
Reg Price \$2,555

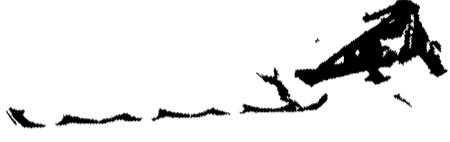
DISCOUNT SALE PRICE

**\$2,275**

NOW ONLY ..... **\$2,095**

KUHN MODEL 285 GMD 66 HD  
3 PT., 7'10" CUT MULTI-DISK MOWER

With its 6 discs and 2.4 m (7'10") cutting width the GMD 66 is the largest model in the Multidisc Mower range.



The dividing plate makes a clean break between cut and uncut crop while the swath board brings the grass into a narrow fluffy swath when so desired.

NOW ONLY ..... **\$3,450**

## BUY TWO MACHINES IN ONE



**GYROSTAR  
GRS 24**

Used Demo 10'4" Wide Tedder Or Rake w/9' Raking Width... Combination w/ Easy Changing.

One Only .... **\$1,575**



GRS 24-Tedding Position



GRS24 - Raking Position

KUHN MODEL GF 452 T 17 FT. TEDDER



Towed model width (17 ft) easily hooked onto any drawbar. When the wheels are locked at an angle the crop can be directed away from hedges and fences.

Reg Price \$2,795

DISCOUNT SALE PRICE **\$2,450**

NOW ONLY ..... **\$2,375**

MODEL GF440T 13' PULL TYPE TEDDER



Adjustable Wheels  
One Only

Serial No 3900  
Reg Price \$2,800

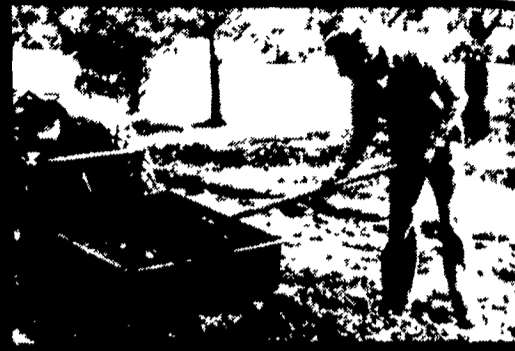
DISCOUNT SALE PRICE **\$2,125**

NOW ONLY ..... **\$1,975**

## IN STOCK Introducing...

### DUMP & CARRY

- 3 Point Hitch Hookup (Cat. 1)
- 40x40x12 Inch Box
- 11 Cu. Ft. Capacity (500 lbs. max.)
- Lowers to Ground Level to Load
- Load Cargo at Ground Level
- 3 Position Tail Gate
- Rases to Level for Transport
- Easy Touch Gravity Dump
- No Hydraulic Hookup Problems



IN STOCK...  
Come And See

INTRODUCTORY PRICE ..... **\$308.95**

**\$295.00**

## Factory Fresh, Just Arrived TAG-A-LONG TRAILERS

Save A Bundle



**SPECIFICATIONS:**

Axles..... 2	Deck Material... Oil treated 2" pine	Color..... Yellow
Brake Axles..... 2	Tires..... 7:00x14.5	GVW..... 9500 lbs.
Hitch... 2 5/16" Ball	Weight..... 1500#	Deck Width..... 76"
	Capacity... 8000 lbs.	Deck Height... 19"

Removable Bolt On Fenders Are Included In Price

• **TT14** Deck Length: 14 Ft. List \$2,465 SALE **\$1,695**

• **TT16** Deck Length: 16 Ft. List \$2,535 SALE **\$1,755**

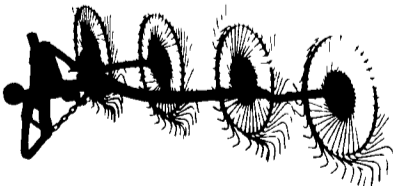
**NOTICE:** The Carrying Capacity Has Been Increased Over Above Listing  
Call For Details!

### IDEAL FOR HAY, STRAW AND MUCH MORE!

Special Offer On New QUALITY BUILT RAKES

**NOTICE:** Rake your hay, straw and corn fodder with an inexpensive, 3 pt. Wheel Rake for only

**\$495.00**



### OTHER USED CONSTRUCTION EQUIPMENT IN STOCK

- 1981 Case 850B w/4 in 1 Loader, 4 Shank Ripper, Rops, 450 Actual Hrs. Ready For Work..... **ONLY \$28,900**
- Case 1150 B Crawler, 1977 Model w/6 Way Dozer, 2600 Hrs., New Pins & Bushings..... **Priced Right!**
- 1979 Case 580C, Cab & Heater, Power Shuttle w/Standard Hoe, Good Tires..... **ONLY \$16,800**
- Bomag Walk-Behind Asphalt Vibratory Roller, Like New..... **\$3,850**

## BINKLEY & HURST BROS., INC.

133 Rothsville Station Rd., Lititz, PA 17543

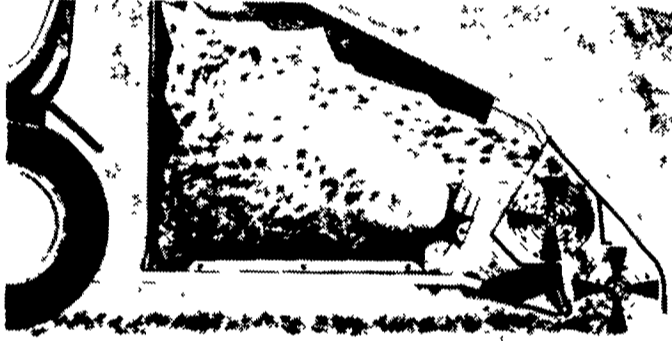
Located 1/2 Mile North of Rothsville

PH: 717-626-4705

Hours Mon-Fri 7 A.M. - 5 P.M.

Sat 7 A.M. - 1:30 A.M. Sun Closed - Lord's Day

## 38" WIDE LAWN SWEEPER IN STOCK



### Gear Drive

The HI SWEEP design provides positive gear drive..no belts to stretch or slip. The Ingersoll HI SWEEP sweeper is designed for operator convenience and high performance lawn sweeping.

### Ingersoll HI SWEEP

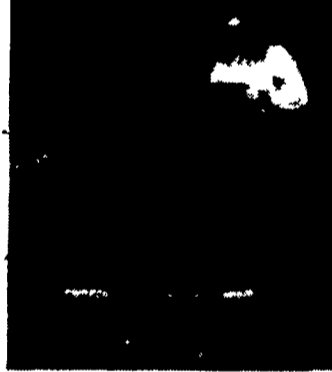
The Ingersoll exclusive HI SWEEP 38" lawn sweeper gives you trailing gear drive for high performance.

The HI SWEEP two-stage lawn sweeper provides two gear driven polypropylene brushes...a lower brush for pick-up and an upper brush to propel swept material deep into the 11-bushel capacity hopper. The hopper fills completely without annoying stops to hand adjust the load.

A height selector allows six sweeping positions plus a transport position.

### Easy Dumping

Wheels located at the rear make backing easy and pivoting hopper dumps to the rear, behind the path of the sweeper. No need to unhook unit from the tractor drawbar.

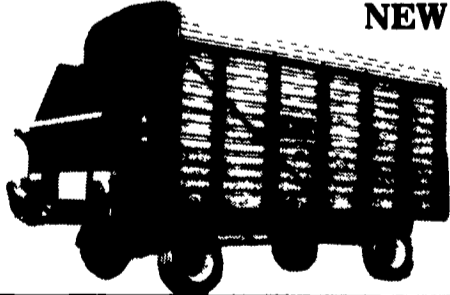


**SPECIAL ONLY \$369**

### NEW MEYER'S 16 FT. 518 FORAGE BOX

10 YR. LIMITED WARRANTY ON ALUMINIZED STEEL SIDES, 3 BEATER/ROOF

Mounted on EZ Trail  
10 Ton Gear w/11Lx15 Tires



**COMPLETE UNIT ..... \$5,390**



### REAP THE BENEFITS

Yield Trak Monitors four basic functions ground speed, acres harvested, bushels per acre and total bushels harvested. The bushels per acre function is divided into two counters with independent resets, so you can pinpoint yields with each tank-full or measure an entire field.

Yield Trak provides the information you need at harvest to operate at maximum efficiency and make the best possible decisions for next season's crop.

- Record exact number of acres harvested
- Increase productivity through accurate monitoring of ground speed
- Establish yield records for each field or soil type
- Assess the effects of weeds or insects on yields
- Determine next year's fertilizer and chemical requirements
- Measure yields from test plots to determine best performing varieties
- Establish a more accurate grain inventory
- Load trucks within legal limits

Yield Trak can be used with any make or model of combine and calibrated to accurately measure corn, soybeans, wheat and other small grains. Whether you run your own farm or do custom combining, efficient operation is more essential than ever. Yield Trak eliminates the guess work that can cost you time and money.

Low Cost - Easy-to-Use

Accurate yield measurement with each tank unloaded.