



# Livestock market and auction news

## Virginia Cattle

Richmond, Virginia  
Northern, Va.  
Thurs., May 15 to  
Wed., May 21, 1986  
Report Supplied by VDA  
Head Count: 4,081  
Trend: Steady to 2.00 higher.  
STEERS: Medium 1 300-500 lbs.  
57.75-69.00; 500-700 lbs. 54.50-66.25;  
700-1000 lbs. 48.00-54.00. Large 1  
300-500 lbs. 67.00; 500-700 lbs. 60.00-  
64.50; 700-1000 lbs. 46.75-54.50.

Small 1 300-500 lbs. 52.00-62.00; 500-  
700 lbs. 46.00-57.50.  
HEIFERS: Medium 1 300-500  
lbs. 46.50-55.00; 500-700 lbs. 40.00-  
51.25; 700-900 lbs. 42.00-50.00. Large  
1 300-500 lbs. 47.50-55.00; 500-700  
lbs. 47.00-53.00; 700-900 lbs. 48.50.  
Small 1 300-500 lbs. 47.50-48.50; 500-  
700 lbs. 44.00-50.00.  
South & Southwest Va.  
STEERS: Medium 1 300-500 lbs.  
58.00-66.00; 500-700 lbs. 53.50-62.00;  
700-900 lbs. 46.50-53.50. Large 1 300-  
500 lbs. 62.50-70.00; 500-700 lbs.

55.00-64.00; 700-900 lbs. 55.00. Small  
1 300-500 lbs. 49.75-59.50; 500-700  
lbs. 48.00-55.25; 700-900 lbs. 51.75.  
HEIFERS: Medium 1 300-500  
lbs. 41.25-55.00, 500-700 lbs. 47.00-  
54.00; 700-900 lbs. 42.00-48.50. Large  
1 300-500 lbs. 49.50-55.50; 500-700  
lbs. 46.00-52.00; 700-900 lbs. 42.50-  
47.50. Small 1 300-500 lbs. 41.00-  
50.50; 500-700 lbs. 41.25-47.25.

Shenandoah Valley  
Livestock  
Harrisonburg, Va.  
Saturday, May 17

Report supplied by auction  
FEEDER CATTLE: Trend all  
classes steady.

STEERS: M&L-1 300-500 lbs.  
58.00-67.50; 500-700 lbs. 54.00-63.50;  
700-1000 lbs. 48.00-54.50; Holstein  
300-1000 lbs. 38.00-54.50. S-L&M&L-  
2 300-500 lbs. 50.00-60.00; 500-700  
lbs. 47.00-54.50; 700-1000 lbs. 47.00-  
50.00.

FEEDER BULLS: M&L-1 300-  
500 lbs. 54.50-67.00; 500-700 lbs.  
44.50-57.00. S-L&M&L-2 300-500 lbs.  
48.00-61.00; 500-700 lbs. 40.50-48.00.

HEIFERS: M&L-1 300-500 lbs.  
49.00-54.75, 1 lot 58.00; 500-700 lbs.  
40.00-50.00; 700-800 lbs. 42.00-45.00.  
S-L&M&L-2 300-500 lbs. 45.00-48.50;  
500-700 lbs. 44.00-47.00.

STOCK COWS: Beef w/calves  
\$430.00-\$600.00; Baby Calves  
\$32.00-\$86.00.

SLAUGHTER COWS: 1.00  
Lower. Utility & Commercial 2-4  
33.00-38.50; Canner & Cutters 1-3  
25.00-32.00.

SLAUGHTER BULLS: 1 & 2  
42.00-44.25.

LAMBS: Trend Steady. Blue O  
High Choice & Prime 78.90; Red O  
Choice 64.25; Feeder Lambs  
Choice 63.00; Slaughter Ewes  
10.00-21.25.

HOGS: 2.00 Lower. US 1-3 200-240  
lbs. 43.75; Sows 1-3 36.00-38.25;  
Boars 22.00.

VEAL: Choice and Prime 65.00-  
75.00; Good 53.50-62.00.

SLAUGHTER CALVES: Good &  
Choice 48.00-52.00.

## Westminster Livestock Auction

Hagerstown, Md.  
Tuesday, May 20

Report supplied by auction  
SLAUGHTER COWS: \$1 lower.  
High Yield to 39.50; Utility 34.00-

37.00; Canners 30.00-34.00; Shelly  
30.00-down. Bulls - Good 1,600-1,900  
lbs. 43.75-45.50; 1,000-1,300 lbs.  
34.50-41.75. Fed Steers Choice 960-  
1040 lbs. 52.00-54.00; Standard to  
Good Holstein Cross 41.00-41.50.  
Fed Heifers- Choice 1,000 lbs.  
50.00; Good 830-915 lbs. 43.00-58.00.  
Veal Calves: Low Choice to 81.00;  
Good 68.00-70.00; Standard 45.00-  
55.00; Killers 80-100 lb. 45.00-51.00;  
Weak/Rough 45.00-down. Farm  
Calves strong demand. Holstein  
Bulls 90-125 lbs. 90.00-116.00, few  
60.00-90.00. Holstein Heifers few  
100-125 lbs. 57.00-60.00; Beef Cross  
90-110 lbs. 53.00-60.00. Butcher  
Hogs good run. US #1&3 215-240 lbs.  
47.00-48.00; 240-260 lbs. 46.0-47.00;  
195-210 lbs. 42.75-43.00; 300-350  
lbs. 31.00-39.00. Sows 500-600 lbs.  
41.00-42.00; 400-500 lbs. 33.00-38.25.  
Boars 1 830 lbs. 26.00; 300-350 lbs.  
28.00-33.00.

STOCK CATTLE: Smaller Run.  
Steers few offered. 500-600 lbs.  
good 58.00-60.00. Heifers 300-500 lb.  
Choice 50.00-53.00, 1 at 59.00, Good  
40.00-48.00; 500-700 lb. Choice 45.00-  
50.00; Good 40.00-45.00; Holsteins  
39.00-43.00. Bulls 300-500 lbs.  
Medium to Good 45.00-51.00; 500-  
700 lbs. Good to 55.00. Lambs 40  
head, good selection. 40-50 lbs.  
85.00-105.00; 70-90 lbs. 67.50-75.00;  
95-110 lbs. 71.00-78.00; 130-145 lbs.  
58.00-68.00. Sheep- 20 head, prices  
higher. For Slaughter 22.00-30.00;  
Take Home 30.00-41.00. Goats 30  
head. Large 40.00-48.00; Medium  
25.00-39.00; Small Kids 14.00-21.00.  
Pigs and Shoats 130 head strong  
demand. By the Head: 16-35 lbs.  
28.00-39.50; 40-50 lbs. 39.00-44.00;  
60-75 lbs. 42.00-49.00; 80-105 lbs.  
49.00-54.00. By the lb: 2 lots 100-110  
lbs., 51.00-55.00; Stock boars: 2  
head 200-255 lbs. 32-35.50.

## SPECIAL NOTICE

Vintage Sales Stables, Inc.  
We receive hogs for auction every Sat.  
morning from 7 a.m. to 10:30 a.m.  
Send Sows, Boars & Finished Hogs  
We Have Orders For 600-800 Hogs.  
Every Sat.  
L. Robert Frame Mgr.  
Phone 717-768-8204  
442-4181

## D & H Cattle Transport

Local and Long  
Distance Hauling  
With A 24 Ft  
Gooseneck Trailer

Call Don At  
717 / 284-2580  
Lancaster, Pa



## WANTED TO BUY

PIK Certificates

Exchange now for cash at  
100% of face value. Don't  
wait until October and get  
only 95%.

215-588-0047 Eves.

48% Soybean Meal, **\$204.00**

44% Soybean Meal, **\$195.00**

Distillers Grains, **\$157.00**

Per Ton — Delivered

**EVEN LOWER PRICES FOR LARGER  
QUANTITIES.**

Buy up to 11 tons and save more! No extra charge  
to blend these ingredients.

NOTE: We can sell for less because we sell only  
to people who pay promptly.

## WALKER COMPANY

Gap, PA 17527

717-442-4169 (Collect)

**TOP PRICES  
FOR DOWN, CRIPPLED  
AND AS IS  
COWS, BULLS & STEERS**

**Slaughtered Under  
Federal Inspection  
Paid On Dressed Weight**

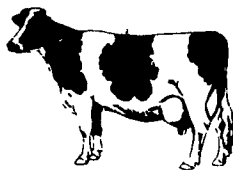
Tom Mulvaney  
Livestock Trucking  
(201) 454-4247

### HANDLING:

Warren, Hunterdon, Sussex  
And Somerset Counties, New Jersey

### IN PENNA:

Northampton,  
Bucks And  
Lehigh Counties



## ATTENTION FARMERS

**EVERY MONDAY  
HATFIELD PACKING CO. and  
MOYER PACKING CO.**

Will Receive Your  
Hogs and Cattle at the  
**DANVILLE LIVESTOCK MARKET**  
RD 4, Danville, PA

- We will receive your hogs from 8 AM to 12 Noon every Monday. Your hogs will be weighed and paid for immediately.
- We will also accept your sows & boars.
- Your cattle will be received from 12:30 to 5 P.M. We will either pay you for your cattle immediately or you may sell them dressed weight.
- There will not be a commission or yardage fee deducted from your check.
- You may call our office Monday morning and we will be able to tell you the base price for hogs for the day.

MELVIN M. LEHMAN - Owner  
Danville Buying Station

Phone: 717-275-2880

## ATTENTION CATTLE FEEDERS

## GRADED SALE

Friday, May 30th  
11 AM

• 170 Head Local Acclimated Cattle.

## Walter M. Dunlap and Sons

Lancaster Stockyards Tel. (717) 397-5136

An Old Line Commission Firm Keeping Abreast With The Times



## LOOKING FOR MORE INCOME?

We are looking for farmers to  
build new farrow to feeder pig  
units and contract with us for  
guaranteed income.



### We Provide

- \* Building Specifications
- \* Sows
- \* Feed
- \* Vet Service and Medication
- \* Complete Training in your new unit

All inquiries confidential. Send name,  
address, county and phone number to:

**Lancaster Farming**  
P.O. Box 366 - L-84  
Lititz, PA 17543

## SWINE PRODUCTION SALES AND SERVICE

Complete Feeding  
Programs and Services

Feeding Programs to  
Meet Your Individual  
Needs

Computerized  
Record Keeping  
System

Providing Veterinarian  
Service

PA. Toll Free  
1-800-468-5524



419 W. High Street  
Elizabethtown, PA  
17022

Supplying Farm Fresh  
Feeder Pigs

Marketing and Hedging  
Services

Marketing of Genesis  
Breeding Stock

Developing Individual  
Financial Programs

Direct Dial  
(717) 367-1525