

"NOW IS THE BEST TIME"

To inspect these extraordinary farms; where the corn is young & you can really see what you are getting.



If you have the physical help to farm this type of an operation, then let me show you a tremendous opportunity. Total 342 Ac. w/about 235 T.A. Has 2 good houses - huge bank barn & a 60 tie stall addition w/rubber mats & manure storage. Large blue silo & 2 - 14x54 concrete silos, 2 nice streams and nearly level land in high state of cultivation. (He boasts 170 bu. corn/ac) Punch line: At their age & physical condition & with no children to take over, it leaves an excellent opportunity for a younger man wanting his own operation at very reasonable interest rates and a price you can truly "live" with!! Note: Large Equip. Shed. Call me today for more details! Possible Turn Key Operation.



342 Ac. - 228 Presently tilled on two adjoining farms. #1 Has an older 5 BR two story brick & stone mansion - large heifer barn & 66 stanchion bank barn w/pipeline - tank, barn cleaner etc. #2 has 4 B. 2 story (very nice throughout) house & bank barn for heifers, etc. This is mostly level limestone (highly productive) soil w/small stream. Very Nice Setting!! This package comes with financing possibilities and/or turnkey operation. This partnership has been in business many years.



Large Picturesque brick house (new roof) lots of big trees in front yard overlooking some of the nicest level limestone soil in the country! A large obsolete dairy barn - new equip. shed - three car garage and approx. 1.8 mile of road frontage. Very nice setting!! Cash deal only!

21 Ac. Farmette (presently milking 37 cows) bank barn & tobacco shed and 12 ac. tillable, balance = Pasture w/pond. Large 2 1/2 story frame house (new siding & remodeled) priced right - in good neighborhood.

Any one of the above farms can be taken over immediately in mid-season.

P.S. Please call for info. on another executive style farm, over 400 acres available.

MAHLON OBERHOLTZER
Real Estate Agency
Smoketown, PA
717-392-1177

DAIRY FARM

260 acres, 175 tillable, balance pasture, bank barn for 45 cows. 2 silos, gutter cleaner, 8 room house, 4 bedrooms. \$110,000.00 low down payment to qualified buyer.

LEW Real Estate

141 Chestnut St.
Corning, New York 14830
607-937-5637

CENTRAL PENNSYLVANIA FARMS, FARMETTES, LAND & CABINS

We presently have one of the largest selections of farms, farmettes, land and cabins available in central Pennsylvania. We have over 50 exclusive listings.

Our Farm and Land Department would be happy to mail a free, detailed farm and farmette list or land and cabin list to you.

See the May 17 and May 31 issues for a complete farm inventory.

FARM AND LAND DEPARTMENT

Fred Strouse (814) 364-1705 (Shafter) Richard D. Reed (814) 839-4271
Don Myers (814) 422-8111 (Huntingdon) Rachel Part (814) 668-4194
Mel Rocky (814) 466-6668

**KISSINGER
LEONARD
& BROWER**
Realtors

Frederick J. Kissinger, Realtor
William H. Leonard, Realtor
Ralph F. Brower, Realtor
245 S. Allen St.,
State College, PA 16801
(814) 234-4000



**new
pennsylvania
realty, inc.**

717-386-5000

FARM WANTED!

200 to 350 Acres

(In Berks, Schuylkill, Leb. Co. Areas)

I have qualified buyer for ag use, with settlement as soon as possible!

CALL CARL JOHNSON - 215-367-6160

SMALL FARM

To be sold at public sale, on reserve

Wednesday, June 4, 1986

At 12:00 Noon

Approximately 80 acres of good farm land with house and large barn. Located in Lamar area of Clinton County, central Pa.

Can be seen prior to sale by appointment. Call 814-422-8423.

Owners:

Katherine & T.G. Spotts

Pa. License & Bonded Auctioneer

Leon J. Smith Jr.

AU000868L

Millheim, Pa. 16854

Germany Valley

2 adjoining farms, totaling 316 acres, approx. 1/2 tillable, has old stone house, large limestone caverns over 200' long w/underground stream coming out of ground w/trout reproducing in it. Would make great recreational development or farming \$850 per acre

Dairy Farm

With 8 room & bath brick home, 136 acres w/approx 100 acres tillable Limestone ground, 40x100' modern barn w/47 stanchions, 40x72' free stall barn, pipeline milk system, 1200 gal bulk tank, 14x65' concrete silo w/unloader, 40x80' & 20x60' implement buildings w/corn cribs along side, many other extras Located in beautiful Germany Valley, \$195,000

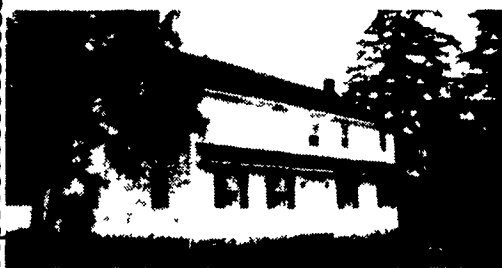
Southern Huntingdon Co.

Dairy farm, 175 acres w/150 acres tillable, large barn w/44 stanchions, 2 nice homes, stream & good spring on property Many other extras \$285,000

Colonial Real Estate Agency
814-447-5511

Lancaster Farming, Saturday, May 24, 1986-B37

Mountain Valley Completely Restored



15 Acres, mostly tillable, 2 fireplaces, 2 baths, 4 bedrooms, good barn. Minutes to the Juniata River, northwest of Harrisburg. \$81,000.

Call Carl at

Kingsway Realty
Lancaster, PA

717-569-8701 or 464-2233

CUMBERLAND COUNTY

97 acres level land, woods, stream, dairy and 200 head hog finishing house

80 acres dairy and 60 unit hog farrowing house, 4,000' road frontage Owner will subdivide

SHOWPLACE 56 acres, stream, woods, new steel implement shed Owner Will Subdivide

15 acres open la **SOLD** t of Newville, beautiful view

Acreage, lots perked, ready to build

FARM & HOME REAL ESTATE

East Petersburg, PA
717-569-3992

Sylvester Baum Jerry Groff Harlan Keener
Carlisle Mt. Gretna Willow Street
717-776-3967 717-964-3746 717-464-2669

Broker - J. Irvin Denlinger
717-898-8962

EXCELLENT CAMP 10x55 Trailer on 5 acres, spring & electric, walk right in to state land across dirt road, good hunting area, \$12,000. W-951.

3.7 ACRES on Baldwin Run within walking distance to state forest land, 10x65 well maintained 1 1/2 baths, 2 bedroom mobile home with drilled well, septic system & electric. Terms, 20% down, 12% interest, years negotiable, \$23,900. W-1003.



THE REAL ESTATERS OF WELLSBORO

East Ave., Wellsboro, PA 16901
717-724-5921
Call or write for free list

GOOD FARMS

#671 130 cow free stall w/double 8 parlor, 4 silos, manure lagoon, 280 acres very productive land, machinery building, 4 bdr. home, nice location. \$190,000. \$130,000. assumable mortgage.

#688 350 cow free stall, manure storage, double 8 parlor, 3,000 gallon bulk tank, several silos, choice land, top location, 537 acres more available, 3 houses, other barns. Asking \$540,000. Make An Offer. Large Financing Available.

#689 Move in tomorrow, seller buys larger farm, 198 acres, 100 tillable, well drained, good land, very nice 4 bdr. 2 bath home, 50 cow 2 story barn w/silo. This is a pretty place in a nice area. \$145,000. \$15,000 Down To Qualified Buyer.

Call

POSSON REALTY
Norwich, NY
607-334-9727

FIX UP RANCHER, 3 BR, full basement (walls cracked), deck, 2.37 ac. overlooking world, low taxes \$28,000. (M1764)

RETIREMENT 3 BR, 2 bath rancher, bsm't, 2 car garage, country setting and views \$39,900, OR, 2 BR rancher \$19,500 (M1762,1741)

APARTMENT 3 units in small town, rented, \$32,900 low taxes (M1751)

RETREAT 3 BR on 20.7 country wooded acres - \$32,500 (M1747)

61 ACRES views forever, terms \$26,000, 120 ac woods/meadow/stream \$59,500 13 7 Ac wooded retreat \$8,500 (M1733,1644,1591)

CAMP 20x26 two-story unfinished, 54 Ac. vast hunting \$29,500 (M1724)

FARMETTE 54 ac pasture/tillable/woods, good barn, large older farmhouse \$39,900 (M1725)

ERA-Homestead Realty
267 S. Main St.
Mansfield, PA 16933
717/662-3287

25 CANYON acres a rare find 25 wooded acres in the Grand Canyon of PA, borders State Land \$25,000, OR, more economical 34 Ac w/2 small streams for \$15,000 nearby (W1041,1040)

RETIREMENT RANCHER 3 Br, 2 car, beautiful garden space, low taxes, \$37,500 (W1304)

CAMPSITE 8.7 acres on Marsh Creek near State Land \$3,500. (W1023)

5 AC. surrounds 3 BR ranch/ camp/ retreat near State Land, \$33,700 (W1022)

CAMP 2 sty lodge + 26x40 shell, 46 acres borders state land, trout stream \$46,900 (W1019)

12 ACRES & trailer near State Land \$10,000. (W1009)

20 ACRES, 6 woods, stream, more available \$10,000 (W943)

ERA-Homestead Realty
23 E. Ave.
Wellsboro, PA 16901
717/724-7161

191 ACRES- Ideal for beef or sheep 3 ponds 4-5 BR house Easy access Owner anxious to sell \$95,000 (D252)

INVEST NOW 2 unit apartment house in small village, private entrances, corner lot, barn/garage Walking distance to stores and churches \$29,500 (D371)

BUILDING SITE 5 ac w/well and septic Underground electric and telephone Rural area. Great spot for a camp \$10,000. (D462)

CAMP OR HOME 4-5 BR situate on 3 acres, recently new roof installed. Walking distance to trout stream. Affordable \$24,900 (D470)

CALL OR WRITE
FOR FREE LISTS

ERA-Homestead Realty
168 W. Main St.
Westfield, PA 16950
814/367-2222

