

Jan Funk Donates Farm Murals

(Continued from Page B14)

refuses to believe she will ever be completely blind. "I choose to believe it is impossible for me to become blind," she said.

Funk's appreciation for life and health is manifested in her lifestyle. During the day she works for Homemakers, but in her "free" time, she paints, writes and works on the Pyle farm as the "unofficial hired hand."

In the summer, she works night shift as often as possible so she has her days free to work on the farm. She keeps a strawberry patch and a vegetable garden there and helps out wherever she can. Last year, Funk recalls with a good-natured grin, Bob Pyle, who now owns the farm, placed a disclaimer on her garden because the rows were so crooked.

In addition to maintaining her garden, Funk gives faded farm equipment a fresh coat of paint and helps with the baling. "When I'm driving that baler, all I can think of, this is contentment," she said.

Along with her enthusiasm for the job, Funk brings a healthy sense of humor. Last year, for example, she planted watermelons in her garden despite disparaging comments from Bob Pyle. To show him just how good her gardening talents were, Jan drove to the nearest Acme, bought the largest watermelon in the store, and planted it in the field. Both enjoyed a hearty laugh over the prank.

Funk approached the mural project with the same enthusiasm she gives to her nursing and farm work. She presented her mural idea to hospital president Norman Ledwin in 1981 and "he was very receptive," she noted.

With Ledwin's approval secured, Funk began to work on the project. She had never painted a mural before and was not accustomed to working with acrylic on wood, the medium she chose for this project.

Funk said the simplistic panoramic view of the farm and hospital is a departure from her normal style. She usually works with pastels and watercolors.

She began by snapping countless pictures of the farms from a variety of angles. And, when she actually began painting, she was careful to represent the farm and machinery accurately. She even

asked Bob Pyle to loan her his baler manual so she could be sure to get every detail correct in the painting.

"These men are very precise and they like things done the right way," she said.

Now, when Funk returns to the

hospital to view her work on display, she can feel a sense of satisfaction in a job well done. Hospital staff who recognize her stop to tell her how much they appreciate her murals and the cheer they bring to the hospital.

Twin Valley FFA Elects Officers

Members of the Twin Valley FFA chapter elected officers for the 1986-87 school year at a recent meeting.

The new officers are: president, Kevin Stoltzfus; agriculture vice president, Rick Hicks; horticulture/forestry vice president, Tom Morgan; secretary, Lauren

Schwartz; treasurer, Bob Bell; reporter, Sue Burkhart; sentinel, Ann Kline; chaplain, Bob Arney; assistant secretary, Rich Slonaker; assistant treasurers, Butch Harrison, Joel Welsh and Larry Mountz; and assistant reporter, Mike Stoltzfus.

Why Buy A Used Harvestore When You Can Have A New Madison Nutri-Matic® Haylage Bottom Unloader For The Same Price or Less!

1. Better Insulation Value. Concrete is a much better insulation material than steel! And the unique Vibra-Cor® design makes a Madison Stave better than any other concrete stave.

2. The Best Unloader. Laidig! Madison helped develop it and knows it inside and out. So your new Nutri-Matic® was designed to make the most of this remarkable unloader that's been called "The Best There Is"!

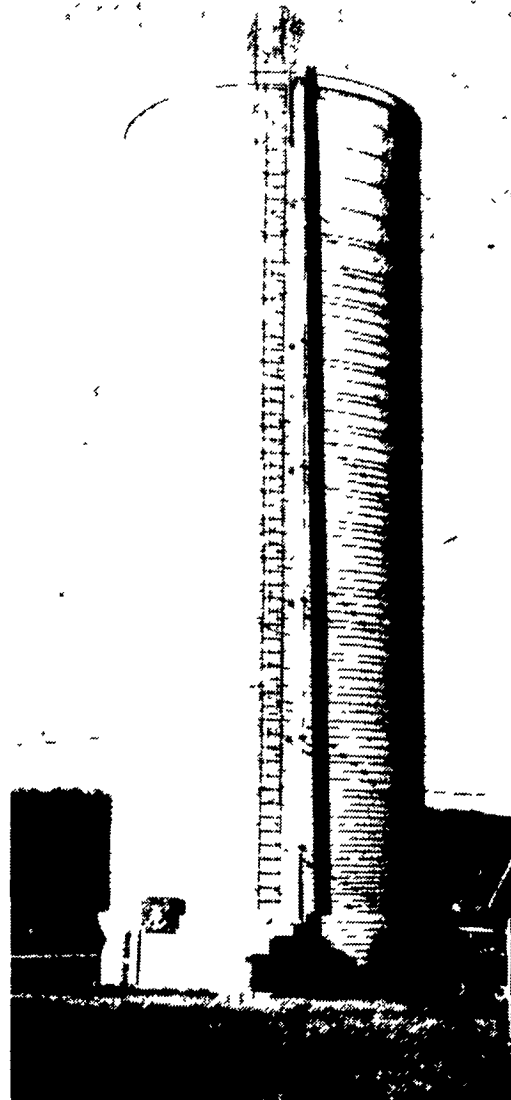
3. Greater Capacity. Because a Madison Nutri-Matic® doesn't require space-robbing breather bags. Up to four feet of valuable extra room.

4. Interior Improvements. Madison pioneered the use of Gunite for better inside finish in all atmosphere-controlled structures.

5. Lower Maintenance. No breather bags to replace. A better unloader. LAIDIG! Quality construction.

6. Less Expansion And Contraction. The real key to top quality haylage. Less heat transfer. Less "Breathing." A better atmosphere for a perfect feed—no matter how much the weather fluctuates.

7. Before You Buy. Talk To a Madison Silo dealer about a new quality bottom unloading silo.



- STOP IN OR CALL US TODAY -

Littlestown, PA
ATLEE REBERT
717-359-5863

New Berlinville, PA
ERB & HENRY
EQUIPMENT
215-367-2169

Milford, DE
BENNETT MACHINE
302-422-4837

Silverdale, PA
I.G. AG SALES
215-257-5135

Bart, PA
SYLVAN G. RESSLER
717-786-2103

Rising Sun, MD
CECIL CO DAIRY
301-658-6923

Ephrata, PA
TOM ZARTMAN
717-733-1050

Harrisonburg, VA
HARMAN FARM SUPPLIES
703-434-4459

Frederick, MD
GLADHILL TRACTOR
301-663-6060

Somerset, PA
ROBERT STAHL
814-445-4040

Belvidere, NJ
G.H. BUCHMAN
201-475-2185

Galena, MD
DUDLEY CHANCE
301-928-3834

Renfrew, PA
JOHN M. HARTZELL
412-586-7951

Elmer, NJ
GEORGE COLEMAN
609-358-8528

Cumberland, MD
J MARSHALL PORTER
301-729-1140

PARTICIPATING AGWAY DEALERS

ARNOLD DECKER
717-369-3607
(Chambersburg)

JOHN MYERS
302-738-0548
(Oxford)

KEN WHIPP
717-265-5353
(Taneytown)

PAUL SHOWALTER
814-276-3733
(Somerset)

WILLIAM KNISELY
814-237-5515
(Pleasant Gap)

MAX TEARS
814-793-2167
(Curryville)

B. WILMER MARTIN
717-273-2621
(Lebanon)

SHERMAN BARNES
717-265-8048
(Wysox)

BRADLEY MILLER
717-566-6243
(York West)



All-Plant LIQUID PLANT FOOD

9-18-9 PLUS OTHERS!

- Contains 100% white ortho phosphoric acid. Made in USA.
- Non-corrosive. Won't settle.
- Top quality. Excellent service.
- Newest equipment.
- Financially sound... and growing!

Big Demand Requires More Distributors!

- I sell to farmers. How do I become your distributor?
- I'm a farmer. What's the price? Where do I get it?

CALL or SEND FOR FACTS:
Phone: 814-364-1349

ALL-PLANT LIQUID PLANT FOOD, INC.
821 State Rd. 511 N., RFD 3,
Ashland, Ohio 44805

THE MADISON WAY IS THE VERY BEST WAY!

MADISON SILO CO. OF PENNSYLVANIA

1070 Steinmetz Rd. Ephrata, Pa. 17522 Phone 717-733-1206