

# Sale Reports

A Public Sale of farm equipment was held May 17 by Dennis and Carol Keith, along Black Horse Rd., E. Cocalico Twp., Lanc. Co., Pa. A large crowd attended the sale.

Some prices included: Ford 6600 D tractor \$5900, Deutz 4506 D tractor \$3600, N.I. PTO manure spreader \$990, disc \$440, J.D. 24T baler \$525, 1967 Chevelle Convertible \$4500, Troy rototiller \$570 and wood splitter \$350.

The auctioneer was Art Pannebecker and H.H. Leid Auction Service had the sale.

XXX

A Public Auction of farm machinery was held May 17 by Mr. and Mrs. Clarence Knox, Jr., R.D. 3, Deer Park, Maryland on Lemoyne King Road. There were over 100 registered buyers at the sale.

Some prices were: Farmall 706 w/cab \$5900, Hesston 7' haybine \$2700, N.H. 770 chopper \$4900, N.I. manure spreader \$1450, arch and evaporator (maple sugar equipment) \$1800, 800 sap buckets .80 to .90 cents each and sleigh bells \$18 apiece.

The auctioneer was Robert G. Custer.

XXX

A Public Sale of farm equipment was held May 17 by Marlin J. Geesaman, 5 miles west of New Bloomfield in the village of Mannsville, Perry Co., Pa. There was a nice turnout for the sale.

Some items sold were: N.H. hay rake \$450, N.H. 469 haybine \$610, 2 hay wagons \$370 & \$385, iron kettle \$35, sausage stuffer \$32.50 and 2 metal flesh forks \$19.

Kling's Auction Service conducted the sale.

XXX

The 11th Annual Consignment Sale for the benefit of the Cumberland Valley Amish School was held at Esh's Store, Otterbein Church Rd., Newburg, Pa. Farm machinery was also sold for Harold Brechbiel.

Some prices were: State Bird quilt \$895, N.I. cutditioner \$800, hydraulic cylinder \$65, Little Giant elevator \$820, J.D. 999 corn planter \$170, grain wagons \$500 & \$525, Oliver #5 corn picker \$310, horse collar \$23, Case 200 baler \$300, hay wagons \$475 & \$450, N.I. 12A spreader \$410, wheel rake \$85, and Briggs & Stratton engine \$120.

Auctioneers were Steve Petersheim, Melvin Sensenig and others.

XXX

A Public Sale of real estate was held May 13 by Ervin Z. and Lucy L. Zimmerman along Union Grove Rd., E. Earl Twp., Lancaster Co., Pa.

The ¼ acre property

with a 2½ story dwelling, 2 car cement block garage, smokehouse, butcher shop with walk-in cooler & compressor was sold for \$45,000.

The auctioneers were T. Glenn Horst and Timothy G. Horst.

XXX

A Public Sale of antiques, guns and primitives was held

May 17 by John R. Rutt, along Peiffer Hill in East Cocalico Twp., Lanc. Co., Pa. There were about 325 people registered for the sale.

Among items sold were: tray \$110, bowl \$105, tea pot \$90, 2 pie plates \$42.50, miniature iron teapot \$100, salesman sample iron teapot \$100, copper kettles \$125 & \$260, 2 antique child's wooden sleighs \$235 & \$290, Bard jug \$145, oak wall telephone \$140, wooden

butter churn \$260, M.B. Young wooden forks \$115 & \$145, iron peach peeler \$170, 2 Currier & Ives prints: 1 from the battle of Gettysburg - \$155 & 1 from the Battle of Bull run \$190, 2 pie cabinets \$120 & \$220, spool cabinet \$170, Winchester model 97, 16-gauge shotgun \$250, Winchester model 12, 12-gauge shotgun \$300 and Remington 12-gauge shotgun \$200.

The auctioneers were T. Glenn and Timothy

G. Horst.

XXX

A Public Auction of real estate and equipment was held May 18 at the Chucker Valley Golf & Polo Club, Ludwig Rd., Rt. 73 & 663, Gilbertsville, Pa.

The 177 acres feature a 27-hole established golf course, modern clubhouse, equipped with restaurant, also 5 bedroom 18th century stone house, large stone bank barn with silo and 2 streams. This

property was sold for \$536,000 to a group headed by Gambone, Inc. of Norristown, Pa.

Other items sold included: Ford dump truck \$950, F-10 tractor \$1100 and 36 Cushman/Pargo/Mellax golf carts \$235 to \$325 each.

Ron Rhoads was the auctioneer.

XXX

A Public Auction of tools and household goods was held May 17 by Harold W. and Nancy L. Diffenderfer,

R.D. 1, Manheim, Lanc. Co., Pa. The farm known as Burkholder's Country Store.

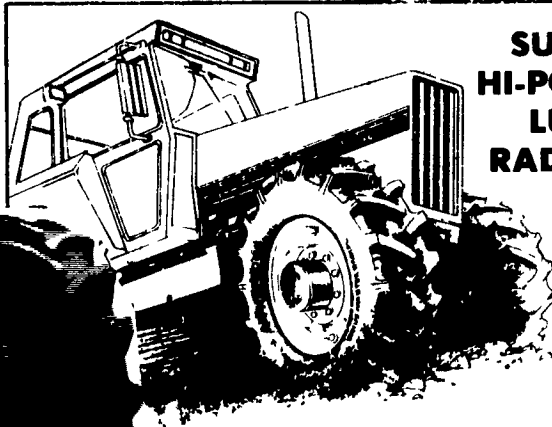
Some prices were: copper wash boiler \$50, steam tractor w/wagon \$55, 3 cement trowels \$270, \$155 & \$65, house \$40, display building \$360, plow \$70, table saw \$225, chopper \$140, chopping block \$70, agate tea kettle \$70 and medicine cabinet \$160.

J. Omar Landis Auction Service, Jay M. Williams, Auctioneer.



Over 15,000 TIRES IN STOCK

**HURRY... Last Chance! Rebate Offer Ends May 31st**



**SUPER HI-POWER LUG RADIALS**

14 9R28 10 Ply	\$325.00
16 9R28 10 Ply	\$399.00
18 4R34 6 Ply	\$399.00
16R38 6 Ply	\$429.00
18 4R38 6 Ply	\$459.00
18 4R38 8 Ply	\$529.00
18 4R26 10 Ply	\$449.00
20R34 8 Ply	\$639.00
20 8R38 8 Ply	\$649.00
20 8R38 10 Ply	\$699.00

Hurry...Last Chance!

**\$100 CASH REBATE**  
From Armstrong  
With Purchase Of  
A Pair Of Super  
Hi-Power Lug  
Radials

**Loader-Dozer**



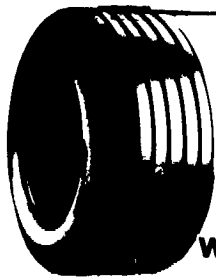
★ **TUBELESS** ★

16 9x24 8 ply	\$265.00
16 9x24 10 ply	\$330.00
17 5Lx24 6 ply	\$240.00
17 5x24 8 ply	\$270.00
15 5x25 12 ply	\$320.00
17 5x25 12 ply	\$445.00
19 5Lx24 10 Ply	\$359.00
18 5Lx24 12 Ply	\$359.00
21Lx24 12 Ply	\$465.00

★ **TUBE TYPE** ★

14 9x24 6 ply	\$200.00
14 9x24 8 ply	\$220.00
16 9x24 6 ply	\$220.00
16 9x24 8 ply	\$235.00
16 9x24 10 ply	\$280.00
17 5Lx24 8 ply	\$240.00
16 9x28 8 ply	\$260.00
18 4x28 10 ply	\$340.00
20 5x25 12 ply	Call For Quote
23 5x25 16 ply	Quote
1300x24 10 ply	\$225.00
1300x24 12 ply	\$245.00
1400x24 10 ply	\$255.00
1400x24 12 ply	\$280.00

We Have Lots Of **USED TIRES** In Stock!



**WAGON TIRES**

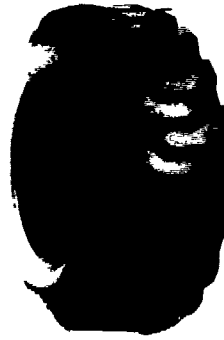
26 1200x12 4 ply	49 00
8 5Lx14 6 ply	41 00
9 5Lx14 6 ply	44 00
9 5Lx14 8 ply	49 50
11Lx14 6 ply	49 00
9 5Lx15 6 ply	42 00
9 5Lx15 8 ply	44 00
11Lx15 6 ply	43 00
11Lx15 8 ply	47 00
25x7 50x15 4 Ply Tubeless	44 00
25x7 50x15 6 Ply Tubeless	49 00
27x9 50x15 4 Ply Tubeless	53 00
27x9 50x15 6 Ply Tubeless	60 00
27x9 50x15 8 Ply Tubeless	65 00
31x13 50x15 6 Ply Tubeless	88 00
31x13 50x15 8 Ply Tubeless	99 00
11Lx15 8 ply tubeless	50 00
11Lx16 8 ply	58 00
11Lx16 10 ply tubeless	74 00
12 5Lx15 10 ply	75 00
12 5Lx16 14 ply	85 00
14Lx16 1 12 ply	140 00
16 5Lx16 1 10 ply tubeless	160 00

Deduct \$5.00 During May



**Small Rear Farm**

750x20 4 ply	59.95
750x24 4 ply	64.95
8 3x24 4 ply	79.00
9 5x24 4 ply	84.00
11 2x34 4 ply	135.00
11 2x36 4 ply	137.00
12 4x36 4 ply	175.00
13 6x36 4 ply	189.00



**Skid Loader**

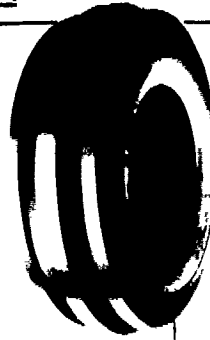
700x15 6 ply	\$65 00
750x15 6 ply	\$68 00
10 16 5 6 ply	\$80 00
12 16 5 8 ply	\$120 00
Steel Shield	
10 16 5 6 ply	\$95 00

Above Tires Shipped To You FREE

**Contractor F-3**

11Lx15 8 ply	\$80 00
11Lx16 8 ply	\$92 00
11Lx16 10 ply	\$98 00
750 800x16 10 ply	\$80 00
11Lx16 12 ply	\$130 00
145 75 16 1 10 ply	\$225 00

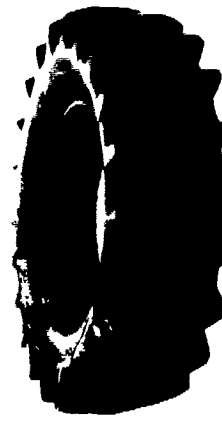
**Front Tractor**



400 12	\$22 00
400 15	\$24 00
500 15	\$31 00
550 16 4 ply	\$33 00
550 16 6 ply	\$38 00
600 16 4 ply	\$37 00
600 16 6 ply	\$41 00
650 16 6 ply	\$42 00
75L 15 6 ply	\$50 00
750 16 8 ply	\$54 00
750 16 6 ply	\$50 00
750 18 6 ply	\$64 00
9 5L 15 6 ply	\$55 00
9 5L 15 8 ply	\$60 00
1000 16 6 ply	\$80 00
11Lx15 8 ply	\$75 00
1100 16 8 ply	\$110 00
14L 16 1 8 ply	\$160 00

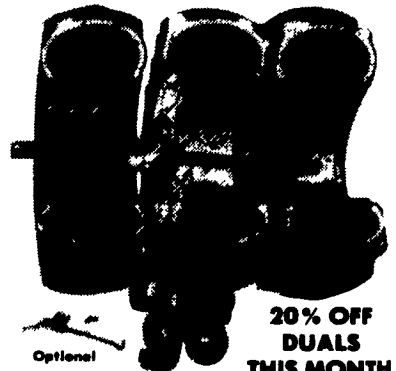
Above Shipped UPS - No Charge

**Hi Power Lug**



11 2x24 4 ply	100 00
14 9x24 4 ply	150 00
14 9x24 6 ply	165 00
14 9x24 8 ply	190 00
16 9x24 6 ply	190 00
16 9x24 8 ply	210 00
14 9x26 6 ply	172 00
18 4x26 6 ply	235 00
23 1x26 8 ply	525 00
23 1x26 10 ply	600 00
11 2x28 4 ply	115 00
12 4x28 4 ply	130 00
13 6x28 4 ply	145 00
13 6x28 6 ply	160 00
14 9x28 4 ply	160 00
14 9x28 6 ply	175 00
16 9x28 6 ply	220 00
16 9x28 8 ply	240 00
18 4x28 6 ply	275 00
16 9x30 6 ply	230 00
18 4x30 6 ply	270 00
23 1x30 8 ply	650 00
24 5x32 10 ply	750 00
16 9x34 6 ply	255 00
18 4x34 6 ply	299 00
18 4x34 8 ply	325 00
20 8x34 6 ply	459 00
20 8x34 8 ply	510 00
23 1x34 8 ply	689 00
11 2x38 4 ply	140 00
12 4x38 4 ply	168 00
13 6x38 4 ply	179 00
13 6x38 6 ply	198 00
14 9x38 6 ply	224 00
15 5x38 6 ply	225 00
16 9x38 6 ply	279 00
18 4x38 6 ply	325 00
18 4x38 8 ply	365 00
20 8x38 8 ply	

the strongest, most reliable and easiest to install...



**20% OFF DUALS THIS MONTH**

M & W DUAL SUPER LOCK II

Tire	Price	Discount	You Pay	(12) Duals
18 4x30	\$650	\$130	\$520	(12) Duals
18 4x34	\$620	\$130	\$490	(12) Duals
18 4x38	\$630	\$140	\$490	(12) Duals
20 8x38	\$790	\$190	\$600	(12) Duals
20 8x34	\$780	\$170	\$610	(12) Duals

Above Duals Are The Strongest Clamp-On Dual Available Snap-On Also Available  
\* 10-Hole Dual Axle Available At 20% Discount Now  
\* All Duals Shipped To Your Farm Free During May

Ask About Our 4 Year Guarantee On Rear Tires Strongest In The Country

We Install Tires On Your Farm  
• Centre Hall • Williamsport  
• Sunbury • Allentown  
• North Penna • New Jersey  
• Northern Maryland

Route 230 West

**MUMMAU TIRE**

Mt Joy PA

Serving Farmers In Penna. New Jersey Northern Maryland and Delaware

Out Of State 717-653-1260 In Penna. 1-800-222-1729