

Livestock market and auction news



Virginia Cattle

Richmond, Virginia
Northern, Va.

Thurs., May 8 to
Wed., May 14, 1986

Report Supplied by VDA
Head Count: 5,090

Trend: Steady to 2.00 higher.

STEERS: Medium 1 300-500 lbs. 58.00-69.00; 500-700 lbs. 57.00-67.10; 700-1000 lbs. 47.00-56.50. Large 1 300-500 lbs. 56.50-65.50; 500-700 lbs. 58.25-63.00; 700-1000 lbs. 50.00-55.50. Small 1 300-500 lbs. 54.00-61.00; 500-700 lbs. 47.50-59.50; 700-1000 lbs. 50.00.

HEIFERS: Medium 1 300-500 lbs. 46.00-56.50; 500-700 lbs. 45.00-53.00; 700-900 lbs. 42.00-47.25. Large 1 300-500 lbs. 52.00-52.75; 500-700

lbs. 45.50-54.00; 700-900 lbs. 49.25. Small 1 300-500 lbs. 40.00-47.50; 500-700 lbs. 45.00-56.50.

South & Southwest Va.

STEERS: Medium 1 300-500 lbs. 55.75-69.00; 500-700 lbs. 53.75-61.50; 700-900 lbs. 48.50-53.00. Large 1 300-500 lbs. 59.00-67.00; 500-700 lbs. 54.00-61.00. Small 1 300-500 lbs. 51.00-63.00; 500-700 lbs. 50.25-62.00; 700-900 lbs. 48.50-52.00.

HEIFERS: Medium 1 300-500 lbs. 46.00-55.50, 500-700 lbs. 44.50-50.00; 700-900 lbs. 43.00-46.50. Large 1 300-500 lbs. 46.00-57.00; 500-700 lbs. 42.00-52.00; 700-900 lbs. 42.00-45.25. Small 1 300-500 lbs. 42.00-52.25; 500-700 lbs. 40.00-45.00.

Shenandoah Valley Livestock

Harrisonburg, Va.
Saturday, May 10

Report supplied by auction

STEERS: M&L-1 300-500 lbs. 61.00-69.00; 500-700 lbs. 56.00-64.50; 700-1000 lbs. 50.00-56.50; Holstein 300-1000 lbs. 39.00-42.50. S-L&M&L-2 300-500 lbs. 57.00-61.00; 500-700 lbs. 56.00-64.00.

FEEDER BULLS: M&L-1 300-500 lbs. 50.00-64.00; 500-700 lbs. 48.50-50.00; 700-1000 lbs. 46.50-52.00. S-L&M&L-2 300-500 lbs. 51.00-56.00.

HEIFERS: M&L-1 300-500 lbs. 48.00-56.00; 500-700 lbs. 45.00-54.00. S-L&M&L-2 300-500 lbs. 41.00-53.50; 500-700 lbs. 44.75-51.00.

STOCK COWS: Beef \$360.00-\$480.00.

SLAUGHTER COWS: Utility & Commercial 2-4 31.00-41.25; Canner & Cutters 1-3 30.00-33.50.

SLAUGHTER BULLS: 1 & 2 35.00-50.75.

LAMBS: Trend. Blue O High Choice & Prime 78.60; Red O Choice 71.00; Feeder Lambs Choice 62.50; Slaughter Ewes 20.50.

HOGS: US 1-3 200-240 lbs. 45.25; Sows 1-3 35.00-41.50.

VEAL: Choice and Prime 74.50; Good 59.00.

SLAUGHTER CALVES: Good & Choice 57.50-59.00.

Westminster Livestock Auction

Hagerstown, Md.
Tuesday, May 13

Report supplied by auction

SLAUGHTER COWS: Steady to \$.50 higher. High Yield 1 at 42.00; Utility 39.00-39.25; Canners 31.00-35.00; Shelly 30.00-down. Bulls - Light run, 1 grain fed 1,500, 48.25. Fed Steers Low choice 50.00-52.25; Good 48.00-50.00. Fed Heifers Choice 49.50-52.00. Veal Calves, Good run, prices higher Choice 75.00-88.00; Good 55.00-72.00; Standard 48.00-54.00; Killers \$3 higher 80-100 lb. 46.00-55.00; Weak/Rough 45.00-down. Farm

Calves Holstein Bulls \$. lower. 100-125 lbs. 85.00-109.00; 90-100 lbs. 65.00-95.00. Holstein Heifers few offered. 95-110 lbs. 52.00-58.00. Butcher Hogs \$2.50 higher. US #1 & 3 215-240 lbs. 46.25-47.35; 195-215 lb. 1 lot 47.75. Sows over 500 lbs. 37.00-39.25; 400-500 lbs. 34.00-37.00. Boars 300-350 lbs. 30.00-31.75; 500-600 lbs. 28.25.

STOCK CATTLE: 70 head, steady prices. STEERS: 300-500 lbs. Good & Choice 53.00-64.00; 500-700 lbs. Good & Choice 51.00-60.00; 850-970 lbs. Medium Holstein Cross 36.00-40.00. Heifers 300-500 lbs. Good 44.00-50.00; 500-700 lbs. few 41.00-43.00; 1 Holstein bred heifer 560.00. Bulls 300-500 lbs. Good & Choice 53.00-63.00; Medium 45.00-52.00; 500-700 lbs. Medium to Good 38.00-46.00. Lambs few offered. 1 30 lb. 145.00; Couple 50-80 lbs. 74.00-78.00; 2 Medium 60-85 lbs. 55.00-60.00. Sheep 14 head. 13.00-24.00 mainly 19.00-22.00. Goats 50 head. Large mature 40.00-48.00; Medium 25.00-40.00; Few Good kids 30.00-45.00; Small 10.00-20.00. Pigs and Shoats 75 head \$4 higher. By the Head: 30-40 lbs. 34.00-44.50; 40-60 lbs. 43.00-45.00; 80-100 lbs. 40.00-50.00. By the Lb: 2 lots 145-177 lbs., 41.00-45.00; Stock boars 240-275 lbs. 31.50-34.00.

Valley Livestock

Athens, Pa.

Monday, May 12

Report supplied by auction
Holstein Hfr. Calves to 87.00.
Veal Calves 75.00-92.50.
Vealer Bull Calves 80.00-120.00.
Slaughter Calves 55.00-60.00.
Grassers & Feeders 35.00-50.00.
Lambs 50.00-64.00.
Sheep 18.00-22.00.
Hogs, 200 to 250 41.00-43.50.
Sows 26.00-31.00.
Boars 26.00-29.50.
Pigs, ea. 25.00-36.50.
Heifers 36.00-40.25.
Steers 0.
Steers, feeder 35.00-50.00.
Bulls 38.00-49.00.
Cows, utility 37.00-40.75.
Cows, fat 36.00-38.00.
Cows, medium 32.00-34.50.
Cows, poor or small 26.00-32.00.
Cattle Market higher.
Calf Market higher.
Horses none.
Ponies to 52.50.
Goats 12.00-40.00.
Hay Common per ton 37.00.
Feeder Sale 1st Monday of Each Month.
Dairy Sale 3rd Thursday of Each Month.

D & H Cattle Transport

Local and Long
Distance Hauling
With A 24 Ft
Gooseneck Trailer

Call Don At

717/284-2580
Lancaster, Pa

LIVESTOCK HAULING

Dependable Service

6 Possum Bottom Tractors
and Trailers
Call Anytime

Vintage Sales Stables, Inc.

L. Robert Frame Manager

Office 717-442-4181
Office & Home: 215-458-5060
Office & Home: 215-458-8518

TOP PRICES FOR DOWN, CRIPPLED AND AS IS COWS, BULLS & STEERS

Slaughtered Under
Federal Inspection
Paid On Dressed Weight

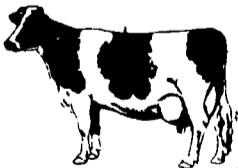
Tom Mulvaney
Livestock Trucking
(201) 454-4247

HANDLING:

Warren, Hunterdon, Sussex
And Somerset Counties, New Jersey

IN PENNA:

Northampton,
Bucks And
Lehigh Counties



SPECIAL NOTICE

Vintage Sales Stables, Inc.
We receive hogs for auction every Sat.
morning from 7 a.m. to 10:30 a.m.
Send Sows, Boars & Finished Hogs
We Have Orders For 600-800 Hogs.
Every Sat.
L. Robert Frame Mgr.
Phone 717-768-8204
442-4181

48% Soybean Meal, **\$205.50**

44% Soybean Meal, **\$196.50**

Distillers Grains, **\$158.00**

Per Ton — Delivered

EVEN LOWER PRICES FOR LARGER

QUANTITIES.

Buy up to 11 tons and save more! No extra charge
to blend these ingredients.

NOTE: We can sell for less because we sell only
to people who pay promptly.

WALKER COMPANY

Gap, PA 17527

717-442-4169 (Collect)

SWINE PRODUCTION SALES AND SERVICE

Complete Feeding
Programs and Services

Feeding Programs to
Meet Your Individual
Needs

Computerized
Record Keeping
System

Providing Veterinarian
Service

PA. Toll Free

1-800-468-5524



419 W. High Street
Elizabethtown, PA
17022

Supplying Farm Fresh
Feeder Pigs

Marketing and Hedging
Services

Marketing of Genesis
Breeding Stock

Developing Individual
Financial Programs

Direct Dial

(717) 367-1525

Will Hog Prices Continue To Move Higher?

At today's favorable levels, we recommend
using a forward contract or a hedge to lock
in a price of 50% of what you plan to move
this summer.

Let PACMA help your ag-marketing
plan succeed!

CALL TODAY:

Ron Manley
Mike Orndorff
717-761-2740
800-382-1356



PENNSYLVANIA FARMERS ASSOCIATION

LOOKING FOR MORE INCOME?

We are looking for farmers to
build new farrow to feeder pig
units and contract with us for
guaranteed income.



We Provide

- * Building Specifications
- * Sows
- * Feed
- * Vet Service and Medication
- * Complete Training in your new unit

All inquiries confidential. Send name,
address, county and phone number to:

Lancaster Farming
P.O. Box 366 - L-84
Lititz, PA 17543