

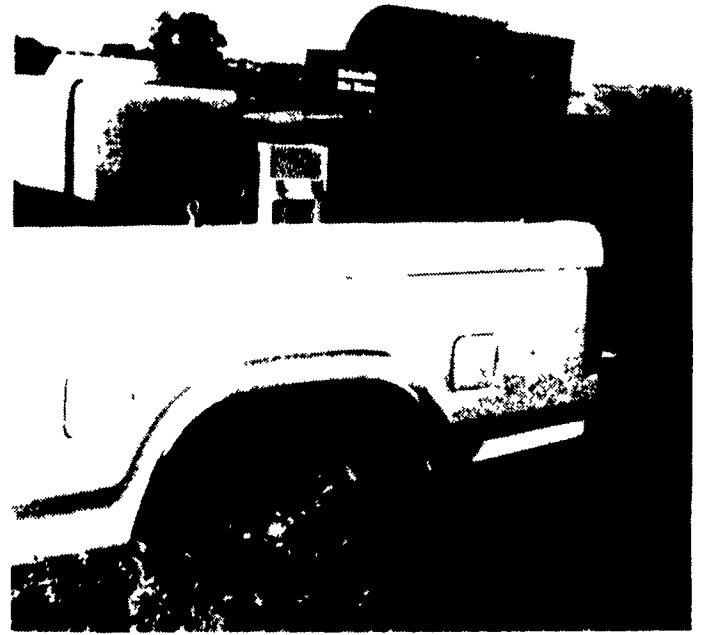


Bucks County DHIA Monthly Report

BUCKS COUNTY DHIA March, 1986

Walter & David Wurster	3	7-3	305	26,017	33	852
Polly						
Crooked Acres Dairy	3	5-2	301	20,823	37	770
Casper						
Rushlyn Farm	3	7-8	305	22,121	36	794
Vinny						
Moyers Village Farm	3	2-3	305	21,049	36	756
Val						
Theodore S Wilson						
Janie	3	4-4	305	27,798	35	974
Crystal	3	3-2	305	24,366	35	857
Penrose and James						
Truffle	3	5-9	305	22,365	37	837
Earl H Ben E Landis						
Jem	3	4-3	305	18,829	42	794
Carl R Kresge						
Dove	3	3-6	305	21,970	41	910
James Phillips						
Gloria	3	5-5	305	22,476	35	793
Wm & Eleanor Gunser						
Cari	3	4-2	305	18,922	40	760
Candice	3	3-11	305	17,884	43	764
Stephen-Gary Natali						
Teresa	3	4-4	305	21,788	42	907
Joe & Linda Ford						
Vicki	3	5-3	305	26,431	32	840
Harry E Thompson						
CRQueen	3	3-2	305	23,782	34	797

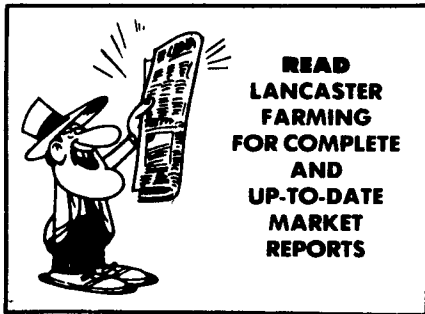
The Farm Dairy	3	5-4	305	18,188	45	824
266A						
Breezyvale Farms						
Tempest	3	3-9	305	19,666	40	783
Delaware Val College						
Lucy	3	5-6	288	22,846	34	771
Theodore S Wilson	B3	48 5	86 5	21,299	752	
Richard O Smith	2	62 3	88 7	15,617	712	
J Howard Roth	3	30 4	87 4	19,002	706	
Raymond Gross	3	46 2	87 7	19,700	706	
Willow Ridge Farm	8	48 9	87 1	18,779	703	
Wm & Eleanor Gunser	3	68 6	88 4	18,938	698	
Robert-Donald Crouse	B3	66 8	87 1	18,604	694	
Moyers Village Farm	B3	84 0	87 5	18,604	693	
David R Wolfinger	3	41 2	87 3	19,692	693	
Harry E Thompson	3	40 8	86 2	19,289	690	
George & David Bishop	3	104 2	86 9	20,031	687	
Delaware Val College	3	36 9	85 0	18,885	682	
Penrose and James	3	79 7	84 7	18,813	681	
Walter & David Wurster	3	58 1	90 1	19,940	681	
James Pavlica	3	42 9	88 8	19,239	675	
Earl H Ben E Landis	B3	29 9	89 6	17,784	675	
Rushlyn Farm	3	37 6	88 0	17,805	671	
Paul L-Kevin Bishop	B3	66 4	88 5	19,841	669	
Crooked Acres Dairy	3	58 0	86 9	19,412	668	
Bishcroft Farm	3	121 1	89 1	17,846	666	
Carl R Kresge	3	114 6	88 9	17,718	650	



Mist Blower controls weeds

An Automatic Mist Blower mounted in a pickup or on a trailer is the best way to control weeds in pastures or on the range according to Ryder Supply. The sprayer uses a powerful centrifugal blower to create a fast-moving cloud of herbicide which coats weeds and brush with a fine mist of active chemical. An adjustable volute enables the operator to direct the sprayer where it's needed. Start and stop operations and volute movement can be remote-controlled from the cab. A number of tank and pump options are available for the unit, as well as a micronizer spray head, which provides droplet size control.

For details contact Ryder Supply, box 219, Chambersburg, Pa., 17201, 717-263-9111.



FLEX-AUGER® delivery systems for high moisture corn

Chore-Time's famous "coreless" FLEX-AUGER now available in two models

Model 125
190 lbs /minute

Model HMC
50 lbs /minute

for feeding corn up to 27% moisture

FLEX-AUGER means you can move more feed per unit of energy used. A 1-hp power unit moves 50 pounds per minute with Model HMC and 220 pounds per minute with Model 125. FLEX-AUGER is also so reliable and long-lasting that Chore-Time now warrants the auger itself for 10 years.

And the system is completely corrosion-proof from the feed bin to the nylon-coated boot to the special PVCT auger tube. FLEX-AUGER high moisture corn systems -- a new way to cut costs and boost efficiency.

COMPLETE SYSTEMS, EQUIPMENT, SALES, INSTALLATION, SERVICE FOR CATTLE, HOGS AND POULTRY

We Welcome Your Inquiries - Call Or Write

AGRI-EQUIPMENT, INC.

Authorized Chore-Time Distributor

RD 4, East Farmersville Rd., Ephrata, PA 17522
(Lancaster County)
(717) 354-6520

STORE HOURS:
Mon. Fri. 7:30 - 4:30
Sat. 7:30 - 11:30
(Parts Only)

Golden Acres BRAND

Golden Acres is a brand name registered by Taylor Evans Seed Company, Tulsa, Texas 74068. T.E. names or numbers are variety designations.

HYBRID SEED CORN

HIGH YIELDING EARLY SINGLE CROSS



- Long Ear and Small Cobb
- Fast Dry Down
- Excellent Standability, Short Strong Stalk
- Ideal For High Plant Populations
- High Yields For Maturity Range

WE RECOMMEND TE 6925

DISTRIBUTORS FOR PA, N.Y. & N.J.

MILLVILLE, PA
THOMAS L HUNTER
State Street
717 458-6043

DANVILLE, PA
Mausdale Farm Supply
717-275-4850

MT. PLEASANT MILLS, PA
Miserville Milling Co
717-539-2141

KUTZTOWN, PA
Ivan Leid Shoe & Saddlery
Rt 1, Box 466 C
215 682 7926

NICHOLSON, PA
Frank M Squier
RD 2 Box 249
717 942 6444

LEWISTOWN, PA
John H. McCalips
Rt 1
717 248-7651

NEW PROVIDENCE, PA
Jacob S Allgyer
Fair View Church Rd
RD 2, Box 158

LACEYVILLE, PA
Parys Farm Equipment
Spring Hill Road
717-869-1464

QUAKERTOWN, PA
C J Wonsidler Brothers
Rt 1
215-536-1935

GLEN ROCK, PA
Charles E. Laughman
RD 1
717-235-1437

PHILLIPSBURG, PA
Earl Reed
Rt. 1
201-859-3798