

**Mid Atlantic Poly Stor, Inc.**

1657 Schucks Rd.  
Bel Air, MD 21014  
Dealer in Poly Farm Products

**Silage Bagging Machines**

8 Ft. Bagging Machines  
9 Ft. Bagging Machines  
Silage Bags To Fit All Machines  
8x95, 8x150, 9x135, 9x150  
Single Ply White,  
2 Ply Black & White

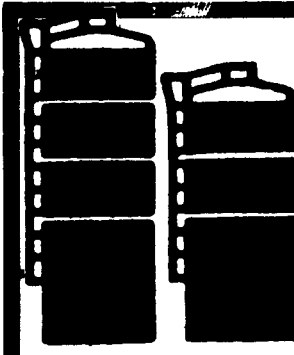
Phone 301-734-7959  
301-734-4185  
Custom Bagging Done

**DETWEILER SILOS**

New Concrete Stave Silos  
New and Used Extensions  
All Types Silo Repair  
Teardown and Rebuild  
New and Used Silo Unloaders

Write or call:

RD #5, Box 676, Newville, PA 17241  
(717) 776-6321 • (717) 532-3039



**BADGER'S AGRI SERVICE**

REPLACEMENT PARTS & SERVICE  
FOR YOUR HARVESTORE® UNLOADERS

QUALITY PARTS AT  
REASONABLE RATES

- \* Complete Breather Bag Service
- \* Supreme Bottom Unloaders
- \* Rebuilt Goliath™ & Hercules™ Unloaders
- \* Used Harvestore® Structures
- \* Replacement Epoxy Floors
- \* More Store External Breather Bags

SERVICING CENTRAL PA & NORTHERN MD

**BRIAN BADGER**

R.D. 1 Box 311B, Dillsburg, PA 17019  
717-432-8377

**ATTENTION FARMERS!**

Don't Let Your Silo Deteriorate

Extend the life of your old silo . . .

with ShotCrete from Lancaster Silo!

**RESURFACES INTERIORS:**

- Coats the silo's interior
- Protects feed in storage
- Durable, tough, acid-resistant
- Increases useful life
- Economical



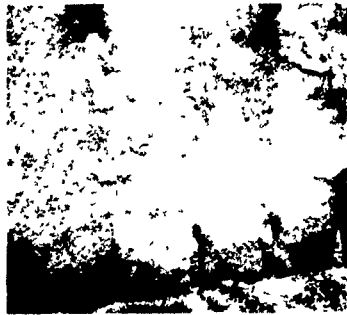
Before . . . The silo's interior with plaster damaged and stave exposed



After . . . The surface is reconditioned, and a new, thick, tough surface will protect stored feed.

**REPAIRS HOLES:**

- Repairs even large holes
- Up to twice the strength of the original stave
- Rapid application
- Durable surface



Before . . . A hole is worn completely through the silo wall



After . . . With the hole repaired by ShotCrete and a new surface applied, the silo is ready for years of use

**EXTENDS USEFUL LIFE:**

- Support for old foundations
- Special repairs can be made . . . quickly and economically
- Little or no forming needed
- Stronger than the original

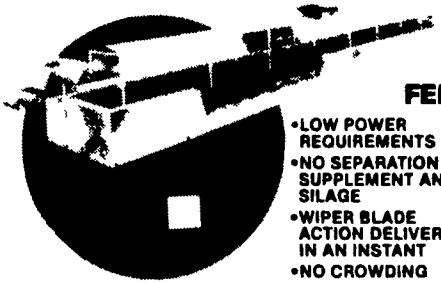


Before . . . The bottom part of the staves are completely worn away



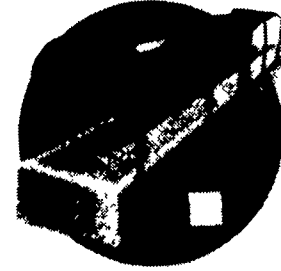
After . . . The ShotCrete System repairs and replaces the missing structure.

**Silo-Matic®**  
FEED HANDLING EQUIPMENT  
Efficient, Labor-Saving  
From Fickes Silo Co.



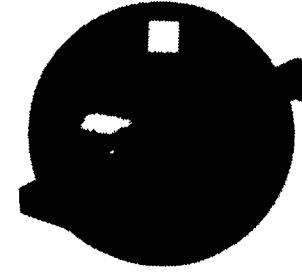
**BELT FEEDER**

- LOW POWER REQUIREMENTS
- NO SEPARATION OF SUPPLEMENT AND SILAGE
- WIPER BLADE ACTION DELIVERS FEED IN AN INSTANT
- NO CROWDING
- MULTIPLE LOT FEEDING



**16" TRAVELING BELT**

- LOW HORSEPOWER REQUIREMENTS
- NO SEPARATION OF MIXED FEEDS
- MULTIPLE CAPABILITY CONTROL BOX



**16" BELT CONVEYOR**

- HIGH VOLUME
- SPRING LOADED TIGHTENER
- DRIVE OPTIONS AVAILABLE

Ask About Trade-Ins



PH. (717) 776-3129

**GUTSHALL'S**

**Silo Repair**  
Tear down and rebuild, extensions, silo roofs, permanent pipe, distributors, unloaders, feeders. We specialize in Replastering Silos.

**BERG AND FARMWAY BARN EQUIPMENT**  
Sales & Service  
Used Patz Barn cleaner and 16x60' silo.

**Robert Gutshall's**  
R.D. #1, Box 212  
Womelsdorf, PA 19567  
717-933-4616

**BUILDING AND SUPPLIES**

10,000 Gal. Storage tanks, \$900 each  
717-768-8222.

100+ Year old barn for sale. Hand hewn oak frame, 50'x100', \$375. York Co. 717-246-1333, 717-292-7001.

For Sale: Factory inventory (30'x40', 40'x60', 50'x100'). We also handle 11-car, mini storages and commercial buildings. Call Daryl at 717-838-4037.

Free for complete removal, stone barn on Route #42, Bloomsbury, Penna. Call 717-784-3958.

Kodiak Pole Buildings: 24x40 as low as \$4,295. Many other sizes to choose from. Call anytime, 717-225-3233.

Painted Barn to be dismantled, approximately 48x60'. For more info, call Ray, 814-652-6520 or write PO Box 326, Everett, PA 15537. Price negotiable.

Pole Buildings erected from \$2,950. Special For May, 40x80x12 complete for only \$13,495. Sizes to 75' wide available. Call Collect. 215-264-5995. Benedict Construction.

- 20'x60' Fickes Silo
- 18'x60' Fickes Silo
- With or Without Unloaders

**HENRY S. LAPP**  
Box 175, RD 1 (Cains)  
Gap, PA 17527  
(717) 442-8134

When you think your silo is beyond repair,

Think of ShotCrete

**LANCASTER SILO CO.**

2008 Horseshoe Rd., Lancaster, Pa.

717/299-3721