

Carol Kurtz is Berks County Dairy Princess

BY ROBIN PHILLIPS
Berks Co. Correspondent

LEESPORT — The new Berks County dairy princess is Carol Kurtz. She is quick to smile, outgoing and adamant about promoting milk.

The daughter of Calvin and Esther Kurtz, R3 Elverson, Carol received her crown before a large crowd at the Berks County Ag Center in Leesport May 3.

For her presentation, Carol sang a snappy song about the merits of milk set to music she had taped for her presentation.

"I enjoy going out and meeting people," Carol explained after receiving her crown. She added that she is looking forward to making new friends and spreading the news about the benefits of milk to many people. "Milk is very important to me," she said.

Since graduating from high school in 1984, Carol has studied at the Penn State University Berks Campus and at the Community College of Philadelphia. She is currently a receptionist/secretary

for a medical doctor.

While in high school, she was active in the Twin Valley FFA as secretary and was a member of the student council, the Black and White 4-H Club, and is active in the Hopewell-Reading Church.

Her interests and hobbies include reading, jogging, music, sports and working with people. Carol lives with her parents, who own and operate a 200-acre dairy farm with 85 Holstein cows.

Sharing the spotlight with Carol Kurtz were contestants for the Li'l Miss Berks County dairy princess title. Winning by a majority vote from secret balloting of the audience was Lynette Heffner, the 5-year-old daughter of Gary and Martha Heffner, R4 Kutztown. The Heffners milk 40 Holsteins on their farm.

Alternate dairy princess is Clarinda Leatherman, the daughter of Dan and Nancy Leatherman, R2 Hamburg. She is a junior at Christopher Dock Mennonite High School, secretary of her youth group at Oley Men-

nonite Church and works part time as a bookkeeper for the Harleysville National Bank.

"You learn to work," she said about her life on the farm. Her parents own and operate a 147-acre dairy farm with 110 Holsteins.

Clarinda performed an educational skit telling small children about the benefits of drinking milk while they were on a picnic. "We have to teach each child to say, 'Mom, I need some milk today,'" she said.

Other contestants were Ann Kline, R1 Birdsboro, the daughter of Paul and Christine Kline; and Diane Troutman, R1 Myerstown, the daughter of George and Mary Troutman.

Other contestants for the Li'l Miss Berks County dairy princess, included, Ann Melissa Kieffer, 3-year-old daughter of Mark and Debra Kieffer, R1 Myerstown; Kyanti Kleinsmith, 4-year-old daughter of Tim and Lee Kleinsmith, R2 Kempton; Karen Smith, 5-year-old daughter of Nevin and Roseann Smith, R2 Kutztown;

Jaclyn Troutman, 4-year-old daughter of Nelson and Mary Troutman; and Jennifer VanHorn, 3-year-old daughter of Jeff and Melanie VanHorn.

Judges for the pageant were Jane Pepple, a dairy farm wife from Oxford; Dr. John Plummer,

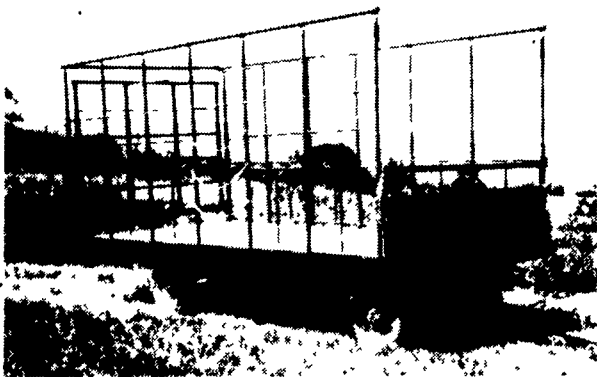
chairman of the dairy department at Delaware Valley College; and Martha Gehringer, dairy editor at Lancaster Farming.

Contestants were judged on their appearance, speaking ability, poise, personality and intelligence.



Carol Kurtz, left, and Lynette Heffner are the new dairy royalty for Berks County.

BEST BUY of the YEAR



- 6" Steel Main Beam
- 2" Vertical Tubing Drilled so that the 1" Horizontal tubing extends Full Length of Wagon
- Front-Side and Rear Loading and Unloading
- 2x8 Pressure Treated Lumber Floor
- 2x6 Oak Cross Beams
- Beds are 8' wide, available in 16, 18 or 21' lengths. Racks are 90" high.
- NEW FEATURE: 6" Channel across back for pushing wagon without damaging bed.

FOR FURTHER INFORMATION, CALL YOUR LOCAL DEALER:

LOST CREEK
IMPLEMENT
Oakland Mill, PA
717-463-2161

MELROSE FARM
SERVICE
Greencastle, PA
717-597-3138

KELLER BROS.
Lebanon, PA
717-949-6501

DUNKLE & GREIB
Mill Hall, PA
717-726-3115

WALTER G. COALE, INC.
Churchville, MD
301-734-7722

TOBIAS EQUIPMENT CO., INC.
Halifax, PA
717-362-3132

NORTHEAST
DISTRIBUTING
West Clifford, Pa.
717-222-9020

VALLEY IMPLEMENT
SALES
Harrisonburg, VA
703-434-9961

CHAMBERSBURG FARM
SUPPLY
Chambersburg, PA
717-264-3533

OXFORD GREENLINE,
INC.
Oxford, PA
215-932-2753

PAUL SHOVER'S, INC.
Loysville, PA
717-789-3117

A.B.C. GROFF
New Holland, PA
717-354-4731

CARLISLE FARM
SERVICE
Carlisle, PA
77-243-4419

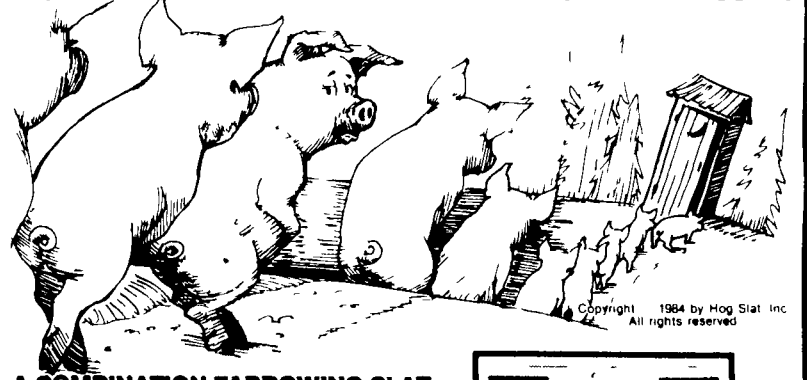
CLARK'S FARM SUPPLY
Williamsport, PA
717-494-0060

Manufactured By

CLW MANUFACTURING, INC.

R.D. #2, Box 8
Newburg, Pa. 17240
717-423-6794

DREADED SCOURS HIT THE DIRT!



A COMBINATION FARROWING SLAT FOR FEWER MORTALITIES!

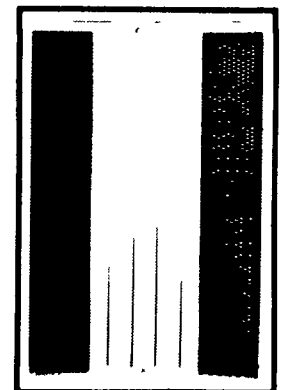
And for higher profits Hog Slat farrowing slats result in cleaner environments, less chance of infection, better footing, and fewer abrasions

- Concrete Basic Framework
- HD Woven Wire Inserts
- Plastic Coated Expanded Metal Creep Area Inserts



DAVE SCHANER-C.T.

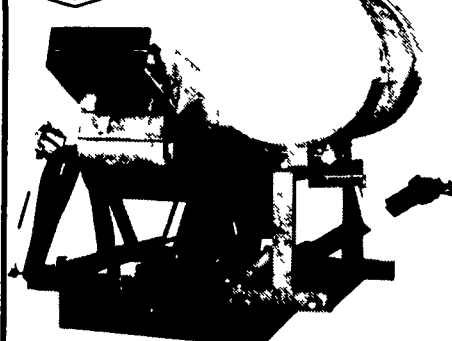
Rt. 1 Box 37
Berlin, MD
301/641-1166



Available in 5 x 8 and 5 x 9 10 gangs
US Patent 4348987

REDUCE APPLICATION TIME

Get Higher Efficiency with Mist Application.



ENHANCE PRODUCTION EFFECTIVENESS OF YOUR FOLIAR NUTRITION PROGRAM WITH ULTRA-FINE MIST SPRAY

and for less money. A high air volume mist blower does more work and with 1/10 the amount of water that is required with conventional sprayers

A mist blower can cover up to 50 acres per hour and cover up to 100 foot swath. Different models to choose from include

- 3-point hook-up PTO powered (one-sided or dual-sided)
- 3-point hook-up or pickup models engine powered
- Orchard and vineyard models (one-sided and dual sided)
- Vegetable models (one-sided and dual sided)

SATISFACTION GUARANTEED

NAME _____
ADDRESS _____
CITY _____
STATE _____ ZIP _____
PHONE _____

For further details, write
WORKS OF PENN.



171 Quarry Rd., Leola, PA 17540
717/656-2120

Models and prices available on request. Dealership inquiries welcome.