

POULTRY MARKETS



Heinsey's Poultry Report

Roots, East Petersburg
Tuesday, May 6, 1986

Report supplied by auction

Due to government restrictions, Heinseys will not be selling poultry until further notice.

RABBITS: 4-6 lbs. range 1.20-1.82 per lb.

RABBITS: 7-12 lbs. range .82-1.10 per lb.

BUNNIES: 1.00-2.50 ea.

GUINEA PIGS: range .10-2.00 ea.

GOATS: range 22.00-39.00 ea.

KID GOATS: range 15.00-59.00 ea.

Total Number Coops: 301.

New York Multiple Drop Broiler Report

Thursday, May 8, 1986

Report Supplied by USDA

Current broiler-fryer negotiated prices for immediate delivery includes mostly multiple drop shipments to New York City from Delmarva.

Range U.S. Grade A 49-58.

Weighted AVG.; U.S. Grade A 55.51.

Premium (X) Boxes 13,188.

(X) Includes special services, selected competitive brands, etc.

Philadelphia Eggs

Thursday, May 8, 1986

Report Supplied by USDA

Market Comment: Prices were unchanged to higher on large sizes, unchanged to lower on mediums. Cartoned egg demand ranged light to instances moderately good with best movement usually noted where retail features were planned or in progress. Floor stocks of large were adequate to fully adequate. Extra large were adequate to well-cleared. Mediums were adequate or available and in heaviest supply. Breakers, while absorbing some of the lighter weight nest runs, were showing less interest for heavy breaking stocks at higher trending prices.

Prices to retailers: sales to volume buyers, consumer grades white eggs in cartons delivered store door:

A Extra Large 62½-66; A Large 2 60½-64; A Medium 48-52.

N.E. Weekly Shell Egg Report

Tuesday, May 6

Report Supplied by USDA

Prices paid per dozen Grade "A" Brown eggs in cartons delivered to retail stores:

	Ex. Large	Large	Medium	Small
N. HAMP.	.78-.82	.74-.78	.63-.67	.43-.47
Mostly	.80-.81	.76-.77	.65-.66	.45-.46
R.I.	.81-.85	.77-.81	.66-.70	.46-.50
Mostly	.81	.77	.66	.46
VERMONT	.89-.94	.85-.90	.75-.80	
Mostly	.89	.85	.75	
MAINE	.85-.92	.81-.87	.70-.77	.50-.57

Weekly New York Egg Market Northeast Quotes

From Friday, May 2 to Thursday, May 7

	Fri.	Mon.	Tues.	Wed.	Thurs.
WHITE					
Jumbo	.71	.71	.73	.75	.78
Ex. Large	.68	.68	.69	.70	.71
Large	.67	.67	.67	.67	.68
Medium	.57	.57	.55	.55	.54
Pullets	.45	.45	.44	.44	.43
Off Grade	.54	.54	.54	.54	.57
BROWN					
Ex. Large	.75	.75	.75	.76	.76
Large	.73	.73	.73	.74	.74
Mediums	.60	.60	.60	.60	.60
OFF GRADE					
Undergrades	.34	.35	.36	.36	.37
Checks	.32	.33	.34	.34	.35

Breaking Stocks

48-50 lbs. 39.00-43.00, 40.00-43.00, 42.00-44.00.
50 lbs. up 42.00-44.00, unquoted.

Delmarva Poultry

Thursday, May 8, 1986

Market Comment: Movement of ready to cook whole birds was again improved for immediate deliveries but was generally only fair. Offerings were in better overall balance but at least adequate. A better call for whole birds was noted for next week's business. Demand for parts was mixed. Cutlets cleared better than yesterday while rib-on-breasts were in good balance. Legs were irregularly available while spot discounting was needed to clear leg quarters. Wings were adequate to fully adequate. Less than trucklot asking prices were unchanged to one cent lower at 50 to 57 cents. Live supplies were moderate. Weights were uneven in a full range of light to heavy. Slaughter schedules were moderately heavy. The undertone was about steady.

Estimated slaughter of broiler fryers in Delmarva:

Estimated 5/08 1,976,000; Actual 5/01 1,902,000.

Actual 5/06 1,969,000.

Average Weights 5/06 4.52, 4/29 4.36.



Copyright 1986 by Lancaster Farming
P.O. Box 366 - Lititz, PA 17543
Office: 22 E. Main St., Lititz, PA 17543
Record-Express Office Building
Phone: Lancaster 717-394-3047
or Lititz 717-626-1164

Robert G. Campbell, Publisher

Everett R. Newswanger, Managing Editor

Jack Hubley, Associate Editor

Suzanne Keene, Home Editor

Martha Gehringer, Dairy Editor

NEWS CORRESPONDENTS

Sally B. Bair, Lancaster County

Columbia 717-285-4926

Joyce Bupp, York County

Seven Valleys 717-428-1865

Kathy Gill, Cumberland

Carlisle 717-243-5566

Robin Phillips, Berks

Mohrsville 215-926-1261

Ginger Myers, Adams

Littlestown 717-359-7542

Nancy Kunick, Crawford

Centerville 814-694-2571

Barbara Rader, Butler

Connoquenessing 412-789-7413

Betsy Stitt, Blair, Bedford

Martinsburg 814-793-2495

Barbara Miller, Lycoming

Hughesville 717-584-3892

Mary Maxwell, Center

State College, 814-238-1416

Miriam Greenfield, Lebanon County

Lebanon 717-274-0239

Craig Bingman, Snyder, Union, Juniata

Beaver Springs 717-837-0085

Ed Shamy, Northampton, Carbon, Monroe,

Northwestern New Jersey

Bangor 215-258-7171

Julie Gocehnour, Virginia

Maurertown 703-459-3209

Sharon Schuster, Maryland

New Windsor 301-635-2654

Rita Shade, Southern New Jersey

Woodstown 609-769-4028

Debbie Stiles, Renzi, WV

Clarksburg 304-622-9841

Subscription Price:

\$8.50 per year; \$15.00 - 2 years

\$15.00 per year outside of

PA, NJ, MD, DE, NY, VA & WV

\$26.00-2 Years

Established November 4, 1955

Published every Saturday

by Lancaster Farming, Lititz, PA

Second Class Postage paid at

22 E Main St

Lititz, PA 17543 ISSN0023-7485

For address change form or new

subscription see Mailbox Markets.

Members of Newspaper Farm Editors Assn.,
Pa. Newspaper Publishers Association,
and National Newspaper Association.

National Representative
J.L. Farmakis, Inc.
Phone 203-986-1746

Eastern PA and NJ Poultry

Wednesday, May 7, 1986

Report Supplied by USDA

Market Comment: Prices were higher with commitment for next week developing at the outside of today's quotes in very competitive trading. Offerings were tightening, and the recent opening of a new processing plant was affecting activity. Canner pack movement was light for the most part, and some product was being stored for later use.

Prices Paid at Farm:

Light Type Hens: 6-9, mostly 8½-9.

F.O.B. Plant: 9-12.

**DURABILITY
YOU NEED AT
PRICES
YOU CAN AFFORD**

**HEAVY
DUTY
AUGERS**

4" - 6" - 8" - 10" - 12"

Standard Sizes In Stock

Custom Sizes Made To Order

FOR MORE INFORMATION,
CALL OR WRITE TODAY:



automatic
farm
systems

608 Evergreen Rd.
Lebanon, PA 17042
(717) 274-5333

Moyer's CHICKS, INC.

Baby Chicks & Started Pullets

DEKALB

Brown & White

Layers



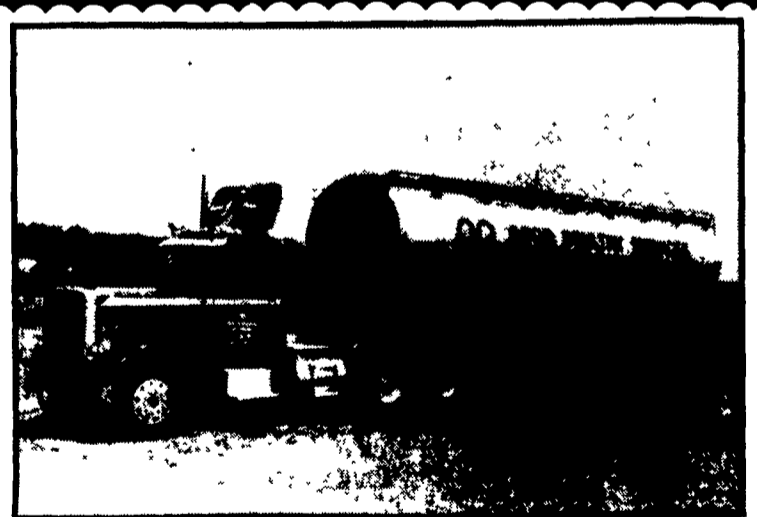
Moyer's

Broilers

PHONE (215) 536-3155

266 E. PALETOWN RD.

QUAKERTOWN, PA 18951



• Custom Bulk Feed Hauling

• Truck Mounted Drawback Unit

Call Us For Competitive Rates



Good Poultry Services, Inc.
Poultry & Feed Haulers

R D 3 Box 87 Columbia Pennsylvania 17512
717-684-2228 717-285-3628