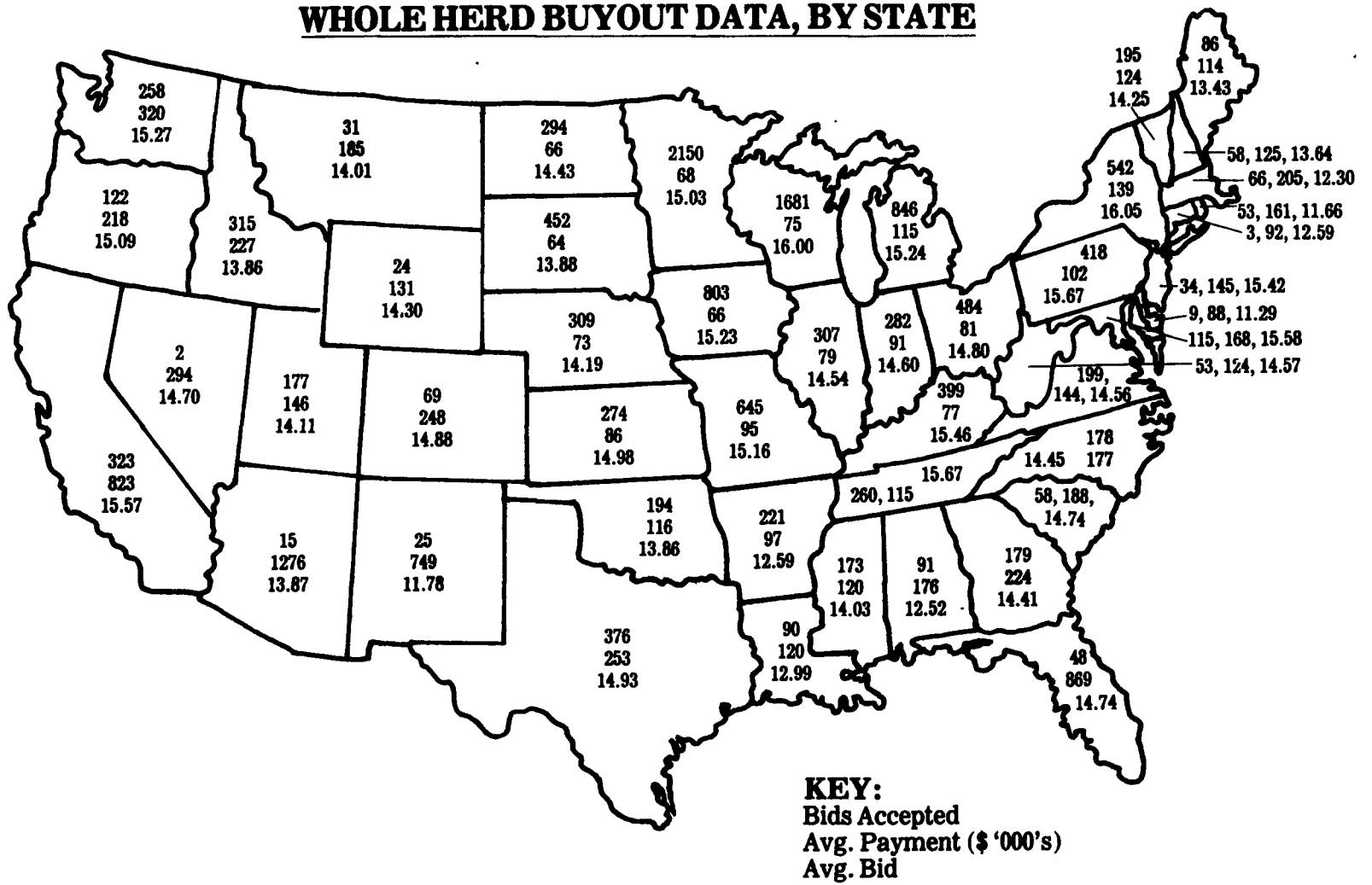


MARCH 1986

**WHOLE HERD BUYOUT DATA, BY STATE**



**Polled Hereford Sale Averages \$742**

BY BETSY STITT

Blair Co. Staff Correspondent  
**BEDFORD** — Cool temperatures failed to chill the enthusiasm of the buyers at the "Sale of Star Performers" sponsored by the Pennsylvania Polled Hereford Association on May 3.

The top selling animal of the sale was PS Victoria 514, selling for \$2,300 to Steve Fritz. This Penn State University consignment is

the daughter of Stillbrook Gilead 67K a Superior Sire.

Earlier in the day judge Gail Long had named this Hereford the Champion Junior Heifer.

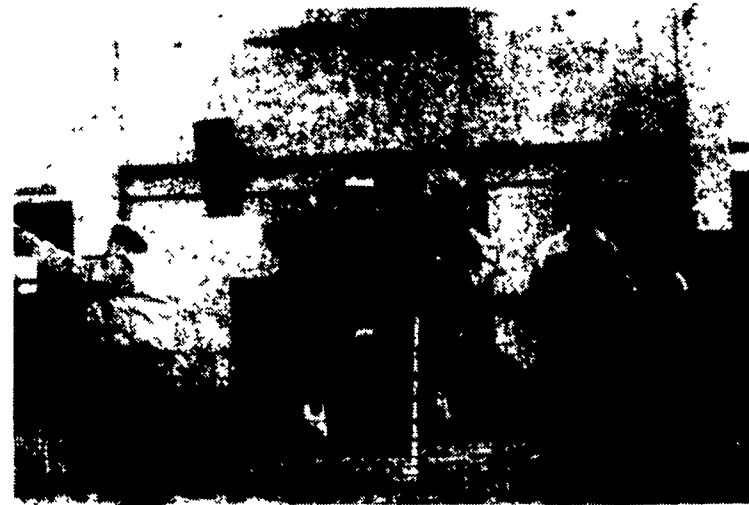
The Champion Senior Heifer was consigned by Falklands Farm of Schellsburg. She is a daughter of PRL 930K Hotline 347N, a Gold Trophy Sire, and is bred to Stillbrook Gilead. She sold for \$1,475 to the Hawbaker Farm in

Chambersburg.

WHF Clementine, consigned by Lu Rose Estate, Inc. of Hagerstown, Md., was named the Champion Cow of the show. Sired by GK Vindicator 1, she sold with her April 11 Renegade heifer calf for \$810 to Green Pastures Farm, Berlin Center, Ohio.

Graystone Farm of Schellsburg consigned the Champion Bull, GS The Force. This bull is out of one of Graystone's most productive cows and the sire Superior Sire Enforcer. He sold for \$775 to the Malone Farm in Everett.

Twenty-nine animals were auctioned off by Jack Downin with Les Midla reading pedigrees for an unofficial average of \$742. These animals came from 14 consignors and sold to four states.



PS Victoria 514 topped the "Sale of Star Performers" sponsored by the Pennsylvania Polled Hereford Association. This champion junior heifer sold for \$2,300 to Steve Fritz.

**Judging School Slated**

**STATE COLLEGE** — The Pennsylvania Junior Holstein Association will be sponsoring their annual Judging Schools this summer. These schools are open to all youths interested in learning more about the basics of evaluating dairy cattle.

Registration deadline is June 17, 1986. Complete details on the schools and registration forms will be available in the near future.

Three schools will be held across the state with the local Holstein clubs coordinating the farms which will supply the animals for the classes.

Each school runs from 12:00 noon to 12:00 noon. The participants will judge and give reasons on four classes on day one and six classes on day two.

The Central School will be held in Huntingdon County on July 8 to 9. The School Official will be Dale Olver, Atlantic Breeders

Crawford County is host for the second school on July 10 to 11 with Ronald Long of Select Sires serving as the School Official.

J. Lloyd Ebersole, Sire Power, is the School Official for the third and final school in York County on July 14 to 15.

Cost will be \$25.00 for overnight participants, which includes room and an evening meal, and \$15.00 for commuting individuals. There will be a \$5.00 discount for the second member of a family that attends the school.

**WHY UNIPEL®**

**20-10-10/24-8-8/21-7-14**

**fertilizer is great for planter applications:**

Is one of your aims to produce high corn yields while reducing fertilizer application rates and expense? Then consider a planter application of high N analysis UNIPEL fertilizer to yield the best return on your fertilizer dollar. Where soil test P & K availabilities are high to excessive, use UNIPEL 20-10-10 or 24-8-8 through the planter to supply the 20 to 40 lbs./A. of phosphate and potash necessary for a vigorous corn start, and at the same time, supply most or all of the N your corn crop will need to produce a top yield. This program has been proven effective compared to traditional high rate broadcast programs. Get together with your UNIPEL dealer to find how the planter application can YIELD RESULTS.



**P.L. ROHRER & BRO., INC.**  
 Smoketown, PA  
 717-299-2571