

PUBLIC AUCTION**APPROX. 56 ACRE FARM**

The undersigned will offer at public auction, the following described real estate, located, taking US Business 15-1.2 mile South of Gettysburg, PA turn right onto Millerstown Road and continue onto Plumbing Station Road 5.5 miles, turn left onto Middle Creek Road, go 1/2 mile and turn right onto Wenchoff Road and to sale site (sale sign posted) on

FRIDAY, MAY 30

- 7:00 p.m.

All that tract of land lying and being in Freedom Township, Adams County, PA - having approx. 2200 ft. frontage on the Wenchoff and Middle Creek Roads and containing approx. 56 acres, consisting of 30 acres cropland, 17 acres pasture and balance woodland and buildings.

Property is improved with a 27 ft. by 30 ft. 2 1/2-story brick home and an adjoining 16 ft. by 20 ft. out-kitchen. Home has kitchen, carpeted dining room w/fireplace, carpeted living room, laundry room, bath and porch on first floor. Second floor consists of 4-bedrooms and balcony. Home has storage attic, metal roof, basement, coal or wood fired hot water heat and own well and septic.

Other improvements are a 27 ft. by 40 ft. cement block building with metal roof, a 40 ft. by 60 ft. frame bank barn and a 10 ft. by 35 ft. cement stove silo.

Auctioneer's Note: This 56 acre farm with home dating to 1808 offers many possibilities, and if looking for property for beef or horses, etc. - Plan to Attend.

For Inspection of Real Estate: Appointment Only- Contact Farm Credit- Gettysburg Office at 717-334-2812.

Terms of Real Estate: 10% down at time of sale- Balance on or before 30 days.

**OWNER-
FEDERAL LAND BANK
OF BALTIMORE**

An Equal Opportunity Lender

C. David Redding- Auctioneer

PA License No. 742-L

Gettysburg, PA- Ph: 717-334-6941

Public Auction Register

Closing Date Monday 5 00 P M
of each week's publication

**BANKRUPTCY
AUCTION**

UNITED STATES DISTRICT COURT
FOR THE
MIDDLE DISTRICT OF PENNSYLVANIA
ABSOLUTE AUCTION

In the Matter of Life Rest Bedding, Inc.

BK #1-86-00246

MONDAY, MAY 12, 1986

At 6:30 P.M.

At Springetts Fire Co. Social Hall, 3013
E. Market St., York, Pa.

Lots of brand new store inventory consisting of new water beds, misc. pcs. of furniture & related items, bedding, accessories, etc.

Inventory consists of bed pedestals plain & with drawers, bed frames, head boards with mirror, decking sets, mattress heaters, mattresses, padding, conditioners, bed care systems, dressers, chest of drawers, night stands, Sharp calculator, formica top steel desk & chair, also lots of assorted sizes & colors of bed comforters, sheet sets, bed pillows & misc. items. All will be sold to the highest bidder at absolute auction. Come prepared to pay & haul it away immediately.

NOTE: Open for inspection 1 hour prior to auction.

Not responsible for accidents on day of sale. Refreshments available.

TERMS: Cash or Approved Check.

JOHN W. THOMPSON, JR.
Trustee

Jacob A. Gilbert
Brian L. Gilbert, Auctioneers
Pa. License #336 & #2256
Phone 252-3591

SAT. MAY 17 - 9AM HH,
Tools, Antiques, Modern

PUBLIC AUCTION

**VALUABLE FARM MACHINERY,
2 TRACTORS, STRAW,
SILAGE, ETC.**

on farm 2 miles W of Lewisburg, Pa.
along Rt. 192 (Former Docks View
Dairy).

TUES. EVE. MAY 13, 1986

starting 6:30 P.M.

Brief listing follows:

81 Case 2290D tractor w/cab, 96 series update, only 1600 hrs. real sharp; Case 830D comfort king w/e tractor, 1 owner, clean; Bobcat Melrose 610 skid-steer loader w/2 buckets; Hesston 1150 12' haybine, hyd. tongue, full width rolls, just used on 4th cutting, 6 mths. old-cream puff; 80 JD 7000 Conservation 4 row corn planter w/insec.; Fox 2000 chopper w/2 row & pickup heads, elec. controls; JD 336 thrower baler; 2 NH #8 SU 16' forage wagons w/roof; 2 16' thrower wagons; Kilbros 350 & little giant gravity wagons; NI 323 picker; NH 256 rake; Martin V2900 liquid tank spreader w/tandem wheels; Martin 3 pth pto liquid manure equalizer- 8' feed, 20' loading auger; Taylorway 10 tooth 3 pth chisel plow; Oliver 545 4-16" semi plows; Pittsburg 16' transport harrow; Brillion 10' dbl. cultipacker; Ontario 13-8 hoe drill; Pittsburg 6' 3 pth rotary mower; Lely 600 lb. 3 pth fert. spreader; 200 gal. 30' 3 pth boom sprayer; NH 355 grinder-mixer; 28' elevator; IH 56 blower; JD 7' 3 pth blade; NH 346 barrel spreader; air compressor; horse items; butcher equip.; copper kettle; 15' corn silage in 20' silo; app. 1000 bales oats & wheat straw; etc. wagon load small items.

Auct. Note: This line of machinery has had great care, many 1 owner pieces, plan to attend. Terms Cash or good check. (No out of state checks.)

Owners,
BARRY & KAY KINLEY

Conducted by
Fralely Auction Co.
(717)546-6907
AU1194L

Farm Eq., Cars, Trucks,
etc. Located approx. 35
mis. N. of Reading.
Schuylkill Co., PA. Or-
dered by: Edward M. Idzik
& Julius J. Karas. Robert
A. Arner, Auct.

SAT. MAY 17 - 10AM
Farm Eq., Cars, Guns &
Personal Property
Located along Black
Horse Rd., East Cocalico
Twp., Lanc. Co. From Rt
272 & 897 Redlight, take
Rt 897 N. to Holtzman
Rd & turn right. Go about
1 mi to Black Horse Rd.,
turn R By Dennis & Carol
Keith H H Leid Auction
Serv

SAT MAY 17 - 12 Noon
Tack Sale. 2:30PM
Horses Sale Held At Twin
Brook Farm, Kutztown,
PA, in indoor arena
Dennis Brownawell, Auct

SAT MAY 17 - 11AM
Outstanding Columbia Co
Dairy Dispersal of 90
Head of Hi-Grade
Holsteins. Located
Rutschmann Farm on
George Rd., 1/2 mi. N of
Rt. 66, Ghent, NY. Or-
dered by: Julius Rut-
schmann, D. Luther Auct

SAT. MAY 17 - 8.30AM
Equipment, Tools, Good
Antiques, Personal
Property. Located on the
Farm known as
Burkholder's Kountry
Store Take Rt. 72 S. of
Manheim, PA. To J.
Harold Merkey Chrysler
Inc Turn W. on Sun Hill
Rd. and continue to
auction site. For: Harold
W. & Nancy L. Dif-
fenderfer. J. Omar Landis
Auct Serv. Jay M. Wit-
man.

SAT MAY 17 - 10AM
Power Woodworking Eq.,
Lumber & Supplies.
Located 15 mis. N. of
Easton, PA, or 5 mis. S. of
the Del. River Bridge at
Portland Along Stone
Church to Riverton Rd.
just E. of Rt. 611 between
Richmond & Centerville.
Ordered by: Mrs George
K Williams. Ralph W
Zettlemoyer Auction Co.,
Inc

**MARTIN'S 15th ANNUAL
SPRING AUCTION**

of

CARRIAGES, SLEIGHS, & ANTIQUES**May 14, 15, 16 & 17, 1986**

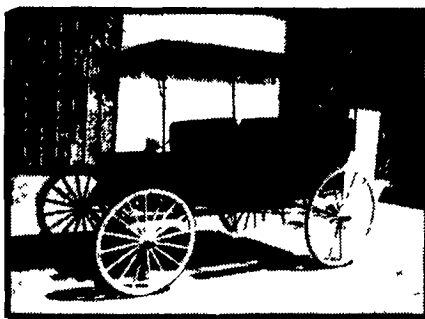
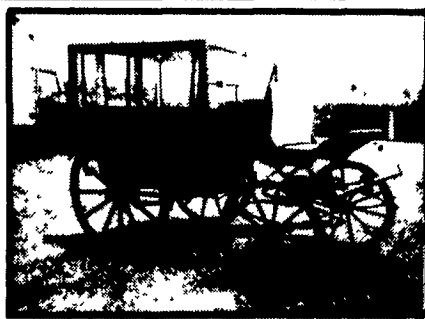
Located at Martin's Sales Pavilion, two miles east of Intercourse, on Route 340,
Lancaster County, Pennsylvania.

This large auction will start on Wednesday evening, May 14 at
7:00 PM and 9:30 AM on Thursday, Friday & Saturday.

Being offered throughout the three days are thousands of lots of horse equipment of all types including sets of harness, new & used; saddles & bridles; parade saddle outfits, silver; harness parts; coaching appointments (many unique & hard to find); books; periodicals; lamps; etc. Also many, many parts for carriages & wagons consisting of wagon wheels, running gears; buggy seats; springs; poles; shafts; dashes; fenders; horse drawn farm machinery; blacksmith & primitive tools. Railroad equipment & collectibles including railroad tie carriers; railroad track carriers; lanterns; r.r. level; jack; car movers; telephone; 1-gal. oil can; red light; r.r. bender (size A by Reading Specialties Co. of Reading, Pa.).

Miniature sleighs & wagons, children's hand pulled wagons; model oil well; baby carriages; flat bed utility trailers; '84 Wells Cargo enclosed trailer; horse trailers.

Antique furniture & misc. antiques & collectibles; primitives; display cases; some china & glassware; Americana collectibles; selection of oak furniture; assorted rockers & chairs; tables; table & floor lamps; bookcases; parlor stove; military stove; coin counter; old wood washing machines; Water Witch washing machine; child's helicopter ride, coin operated; dinner bell; canning jars; old books including, "Abe Lincoln, 1865"; 1834 German Bible; coin operated scales; old crib & high chair; copper wash boiler; egg stoves; quilt; old cook stove; Victrola; 78 victrola records; spittoon; copper apple butter kettle; sewing table; crocks & many other items of interest.



Approx. 400 Horse drawn carriages, coaches, sleighs, hay & farm wagons, both horse & pony size, in varying conditions from restored and/or museum quality to basket cases, will be sold throughout the three days. A partial listing follows: Restored park drag by Shanks of London; Abbott & Downing stage coach; new, restored & used 4 & 6 passenger surreys & democats; cut under pony runabout; restored omnibus; brougham made by Brewster & Co.; Studebaker vis-a-vis; restored town coach; hitch wagon; sev. governess carts; 10 MAN FIRE PUMPER W/BRASS NOZZLE & FITTINGS; Houghton high wheel cart; several hearses; restored East Williston cart by Van Tassel & Kearney; restored Gentleman's phaeton; new beach wagon; Harewood tandem gig; Geo. IV phaeton; pony size 5th wheel trap; new breaking carts; pony sailor wagon; Kuhnle marathon carriage; new vis-a-vis; restored Stanhope phaeton; panel boot & skeleton boot victorias; other hunting & sporting vehicles; pleasure driving carts & buggys, sleighs of all types.

Good, clean consignments of horse related equipment & antiques accepted until the start of the auction. Please contact our office for consignment contracts, or information for selling horse drawn vehicles. The Saturday's session of carriages & sleighs is catalogued and closed but we still have room for vehicles on Thursday or Friday.

TERMS: Cash, Certified Checks or Travelers Checks. For personal or business checks, credit must be re-established each year by presenting a current Letter of Guaranteed Payment, payable to Martin Auctioneers, Inc. All merchandise must be paid by the end of each sale day.



Larry L. Martin
PA AU 000578 L
CA A 904



**Martin
Auctioneers,
Inc.**

P.O. BOX 477
INTERCOURSE, PA 17534

PA - AU-001137-L
CA - C879

Phone: 717 / 768-8108

Paul Z. Martin, Jr.
PA AU 001863 L
CA A 890

