



York County DHIA Monthly Report

February 1986

1023 lbs BF and 24,373 lbs. milk was produced in 305 days by Nona a 7 year old Holstein owned by Smyser's Richlawn Farm, 2691 East Berlin Rd., York, Pa. Second high was Inga a 8 year old Holstein who produced 956 lbs. BF and 21,603 lbs milk in 305 days, owned by Beshore Farms, 389 Old York Rd., New Cumberland, Pa. High herd was H.S. & R.E. Fetrow, RD #4 York, with 83 cows producing 21,339 lbs. milk and 767 lbs BF. Second high was Smyser's Richlawn Farms, 2691 East Berlin Rd., York, with 77 cows producing 21,126 lbs milk and 767 lbs BF

HS & RE Fetrow	3	82.6	87.5	21,339	767
Smysers Richlawn Fms	3	76.9	87.0	21,126	767
Paul R King	3	55.8	87.1	19,190	745
Lynn Wolf	3	71.8	88.5	21,218	736
Stump Acres	3	99.9	91.8	18,622	734
Beshore Farms	3	49.6	83.7	20,430	732
Leonard Creek	3	34.8	93.3	18,618	712
Sinking Spring Fmnc	3	66.1	85.2	18,752	702
Bald Eagle Farm	B3	60.6	90.3	18,705	690
Dan & Patti Hushon	3	38.2	89.2	19,006	687
John Wilcox	B3	53.3	90.3	18,824	687
Wayne B Mummert	B3	76.0	85.9	19,282	683
Thomas A Boyer	3	44.8	86.8	18,984	681
Rineway Dairy Farm	B3	84.6	86.6	19,648	679
Mervin W Hertzler	2	64.5	88.4	14,192	663
William Ruppert	B3	57.5	88.4	18,667	663
William Myers	B3	47.8	85.8	18,775	658
George Innerst & Sons	B3	93.2	85.2	17,815	658
McRai Dairy Farm	B3	185.7	87.7	19,336	657
Shelbud Holsteins	3	67.4	86.5	17,533	657
David Stewart	3	111.4	91.0	17,530	648
Rick L Cook	B3	74.0	86.3	17,852	648
B Robert Charles	3	46.7	86.0	19,150	647
Melvin R Lehr	B3	49.2	82.8	17,973	646
Hopewell Center Farm	B3	29.0	87.8	17,053	646
Desota & Robt Burchett	B3	104.7	87.1	17,472	645
Walnut Hill Farm	B3	51.4	86.1	17,508	644
Melvin & Barb Marks	3	36.5	92.6	18,004	641
Daryl L Bair	G3	36.5	88.3	18,522	640
Wayne E Myers	3	49.6	82.8	17,209	637
Big T Holsteins	B3	96.1	84.8	17,328	635
Ellis Crowl	B3	85.1	89.3	17,150	633
Woodbine Farms	3	150.0	86.4	17,142	629
JH & MB Hushon	B3	93.2	87.4	16,918	628
Smokey Hollow Farm	G3	40.9	90.2	18,088	627
John D Adams	B3	86.1	86.5	16,229	620
Lonnie Robinson	B3	60.0	90.5	16,825	618
Earl Fuhrman	B3	95.0	88.2	17,165	615

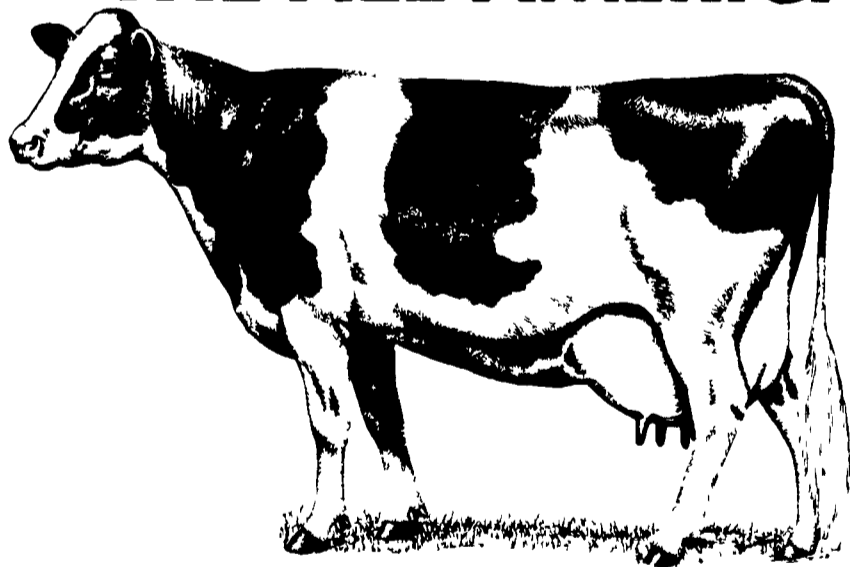
Leroy Bupp	3	107.0	87.5	17,839	615
Jacob Brubaker	B3	46.7	84.6	17,823	611
Leaspring Farm	3	51.1	83.8	17,989	604
Double D Farm	B3	105.7	87.0	16,204	603
Robert W Mays	B3	63.1	87.0	17,517	601
T Edwin Johnson	3	69.1	83.7	15,402	600
Hidden Springs Farm	B8	113.2	84.2	15,636	599
Perrydell Farms	B3	143.1	84.3	16,401	598
Edwin L Calhoun	B3	54.7	86.2	17,059	594
J Donnell Taylor	B3	125.5	84.8	16,641	593
Walter L Amstutz	B3	46.0	84.2	16,652	590
Rodman C Thompson	3	72.7	83.0	16,528	588
Ramsey S Cooper Jr	B3	60.9	86.6	16,413	583
Furnace Creek Farm	3	112.3	85.3	15,826	581
Phillip D Laughman	3	28.6	85.9	16,101	581
My-T Farms	B3	48.2	86.9	15,693	579
Four-Co Farm	3	49.2	82.5	16,223	578
Circle Creek Hol	B3	45.8	86.4	15,399	573
Gary W Thoman	B3	53.8	86.6	15,992	572
Kenneth G Glatfelter	G3	63.8	87.9	16,458	570
David L & Chris Druck	B3	70.5	80.7	16,932	568
Robt Baumgardner Jr	G3	60.9	85.8	16,942	568
Barrens View Fm	B3	67.0	89.8	15,921	565
Rutter Bros	2	79.5	88.4	11,741	565
Robert J Reheard	B3	38.7	85.2	17,332	565
Bradley Emig	4	39.4	84.5	11,799	564
William H Fantom	B3	69.4	86.7	16,189	564
Elvin G Molison	B3	159.0	82.9	16,756	563
Albert Neufeld	B3	117.4	90.2	15,978	563
Howard G Taylor	B3	53.4	86.2	15,950	561
Gum Tree Farm	3	46.9	85.5	16,659	560
David Gemmill	B3	76.5	86.9	15,233	559
Titus Walker	G3	32.7	86.0	15,360	558
Dale & Darla Doll	3	73.3	89.6	16,144	556
Kenneth L. Rexroth	B3	137.4	87.6	15,298	555
Albert Dehoff	B3	150.5	87.1	15,477	554
Elwood T Krick	B3	87.7	89.5	14,549	550
Harold Brown	3	67.2	85.1	15,088	550

Woodbine Farms	3	4-5	305	22,907	3	741
Erica	3	3-7	305	19,424	3	751
H Gold	3	3-3	305	20,411	3	651
ET-196	3	3-3	305	20,411	3	651
Ellis Crowl	3	4-0	305	20,344	3	788
Y-157	3	4-0	305	20,344	3	788
Donald Lanus	3	4-0	305	20,344	3	788
Alma	2	5-4	305	13,093	5	711
Sinking Spring Fmnc	3	2-7	305	16,455	4	685
Tess	3	2-7	305	16,455	4	685
Rutter Bros	2	7-4	305	16,212	4	726
Ellen	2	3-4	305	15,021	4	680
Bear	2	3-4	305	15,021	4	680
Beshore Farms	3	4-5	305	20,877	4	951
Linnan	3	8-3	305	21,603	4	956
Inga	3	8-3	305	21,603	4	956
Leroy Hertzler	3	6-7	305	17,946	3	661
Sally	3	6-7	305	17,946	3	661
Harold Brown	3	10-1	305	17,015	3	669
Gem	3	7-2	305	18,918	3	651
Penny	3	7-2	305	18,918	3	651
Elwood T. Krick	3	6-5	305	20,633	4	850
Beth 99	3	6-5	305	20,633	4	850
Thomas A Boyer	3	6-8	290	22,390	3	673
Debbie	3	6-11	305	18,958	3	679
Nicki	3	4-2	305	17,519	4	706
Silky	3	3-1	305	20,821	3	733
Honey	3	3-1	301	17,636	3	654
Hilda	3	3-1	301	17,636	3	654
Earl Fuhrman	3	3-1	301	17,636	3	654

14	3	3-3	305	21,491	3	734
Furnace Creek Farm	3	4-10	305	18,832	3	667
106	3	4-6	286	17,031	3	651
113	3	4-6	286	17,031	3	651
HS & RE Fetrow	3	10-6	305	25,003	3	854
Honey	3	9-4	305	26,511	3	819
Stella	3	5-10	305	27,020	2	796
* Jajean	3	4-9	305	22,786	3	765
Rita	3	3-7	305	22,880	3	765
Cindy	3	3-5	305	22,138	3	696
Babs	3	3-5	305	23,492	3	790
Senora	3	3-10	305	18,823	4	772
Carmen	3	3-10	305	18,823	4	772
Stump Acres	3	4-2	305	19,138	3	741
Billijo	3	7-6	301	17,439	3	661
JH & MB Hushon	3	4-5	305	21,248	3	788
151	3	4-5	305	21,248	3	788
132	3	4-5	305	21,248	3	788
Rineway Dairy Farm	3	6-6	305	26,400	3	828
232	3	4-4	305	24,520	3	901
316	3	2-0	305	17,828	3	662
387	3	2-0	305	17,828	3	662
RR & MR Stewart	3	12-5	305	18,677	3	650
Jenny	3	7-7	305	24,373	4	1023
Smysers Richlawn Fms	3	6-8	305	22,785	3	682
Nona	3	3-1	282	19,629	3	677
Roberta	3	3-1	282	19,629	3	677
Natalie	3	3-0	305	17,142	4	724
T Edwin Johnson	3	3-0	305	17,142	4	724
Gina	3	3-3	303	16,396	4	670
Leroy Bupp	3	8-8	305	20,092	3	699
Boss	3	8-8	305	20,092	3	699
Angela	3	8-8	305	20,092	3	699
Hidden Springs Farm	3	3-5	305	19,111	3	663
Honey	3	3-5	305	19,111	3	663
Paul R King	3	4-5	305	25,835	3	827
May	3	4-8	305	19,667	4	810
Jewel	3	4-8	305	19,667	4	810
Dale & Darla Doll	3	5-7	305	19,633	3	721
Lucky	3	3-6	297	18,432	3	726
Lilybel	3	3-6	297	18,432	3	726
Lynn Wolf	3	3-11	305	25,205	3	923
Lilac	3	3-11	305	25,205	3	923
Ramsey S Cooper Jr	3	9-3	305	20,393	3	684
Horse	3	3-9	305	16,137	4	688
Alnat	3	3-9	305	16,137	4	688
Melvin R Lehr	3	8-5	305	25,939	3	945
11	3	4-1	297	19,499	3	735
67	3	1-2	269	17,001	3	650
17	3	1-2	269	17,001	3	650
Rick L Cook	3	7-9	305	23,235	2	685
16	3	7-6	305	21,485	3	744
20	3	4-8	305	18,052	3	694
58	3	3-11	295	18,298	4	731
63	3	3-6	286	20,549	3	656
73	3	3-3	305	20,377	4	831
74	3	3-3	305	20,377	4	831
J Donnell Taylor	3	10-7	305	19,563	3	714
Happy	3	8-3	305	20,699	3	705
Aggy	3	8-3	305	20,699	3	705
Buppylann Farms Farm2	3	4-7	305	18,072	3	703
Atom	3	4-7	305	18,072	3	703
Elvin G Molison	3	6-6	305	22,225	3	726
85	3	5-8	305	15,947	4	688
157	3	4-11	288	17,475	3	658
203	3	4-11	288	17,475	3	658

(Turn to Page D14)

THE ALL-AMERICAN COMBINATION



OUR AMERICAN DAIRY COW

and...



AMERICAN Dairy Farm Equip.

SURGE KUBE KOOLERS

....Do 50% Of Your Milk Cooling Using Only Well Water

-HI-VELOCITY-
SANITARY HEAT EXCHANGERS

Pre-Cools Milk
Decreases Compressor Run Time
Eliminates... "Butter Balls"
No Moving Parts To Replace or Repair



CALL US FOR A FREE ON FARM DEMONSTRATION

Longacre
ELECTRICAL SERVICE, INC.

602 Main St.
Bally, Pa. 19503
DIAL
215-845-2261