



Livestock market and auction news

Virginia Cattle

Richmond, Virginia

Northern, Va.

Thurs., Apr. 24 to

Wed., Apr. 30, 1986

Report Supplied by VDA

Head Count: 5,918

Trend: Uneven from 2.00 lower to 1.50 higher.

STEERS: Medium 1 300-500 lbs. 60.00-74.00; 500-700 lbs. 51.00-68.00; 700-1000 lbs. 46.00-57.75. Large 1 300-500 lbs. 61.50-64.00; 500-700 lbs. 55.50-64.50; 700-1000 lbs. 48.25-55.00. Small 1 300-500 lbs. 54.50-71.00; 500-700 lbs. 49.50-68.00; 700-1000 lbs. 44.00-50.50.

HEIFERS: Medium 1 300-500 lbs. 45.00-58.00; 500-700 lbs. 41.00-54.00; 700-900 lbs. 37.50-45.50. Large 1 300-500 lbs. 49.50-53.50; 500-700 lbs. 43.00-56.00; 700-900 lbs. 41.00-44.25. Small 1 300-500 lbs. 44.75-52.50; 500-700 lbs. 41.00-49.75.

South & Southwest Va.

STEERS: Medium 1 300-500 lbs. 54.00-69.00; 500-700 lbs. 52.00-68.75; 700-900 lbs. 47.00-56.00. Large 1 300-500 lbs. 62.00-71.75; 500-700 lbs. 56.00-69.75; 700-900 lbs. 49.50-56.00. Small 1 300-500 lbs. 55.00-68.00; 500-700 lbs. 52.00-60.00; 700-900 lbs. 41.00-45.00.

HEIFERS: Medium 1 300-500 lbs. 48.00-59.00; 500-700 lbs. 44.00-53.00; 700-900 lbs. 44.50-45.00. Large

1 300-500 lbs. 48.00-56.00; 500-700 lbs. 45.00-54.50. Small 1 300-500 lbs. 41.00-53.00; 500-700 lbs. 40.00-54.00.

Four States Livestock

Hagerstown, Md.
Wednesday, Apr. 30

Report supplied by Auction

SLAUGHTER: Fed steers- Few Offered. Choice None, Good 43.00-45.50, Medium 40.00-42.00. Heifers- Good 40.00-42.75, Medium 39.00 down. Cows- Large Run, \$2 Higher. High Yield 37.00-40.00, Average 33.00-36.00, Big Middle 28.00-32.00, Fatty Herf. 27.00-31.00, Shelly 28.00 down. Fat Bulls- \$2 higher. Good 44.00-46.75, Medium 40.00-43.00. Veal Calves- Steady Prices, Farm Calves Very Active, Good 70.00-78.00, Medium 60.00-69.00, Farm Hfrs. 48.00-57.00, Farm Bulls 95.00-115.00, Light Calves 40.00-48.00. Weak calves - 39.00 down. Lambs- Steady Prices. Good & Choice 72.00-85.00.

STOCKER: Steady To \$1 Lower. Steers- 300-500 lbs.- Choice 61.00-65.00, Good 54.00-60.00, Medium

48.00-53.00, Culls 47.00 down. Steers- 600-850 lbs.- Choice 58.00-63.00, Good 52.00-57.00, Medium 51.00 down. Heifers- (all weights)- Choice 51.00-55.00, Good 45.00-50.00, Medium 40.00-44.00. Springing Heifers- to \$785. Pigs, Hd.- \$2 Higher. 20-35 lbs. 30.00-34.00, 40-60 lbs. 35.00-39.50. Shoats By Lb.- 37.50-54.00. Slaughter Hogs- \$1.50 higher, 230-250 lbs. 42.00-42.75. Sows- 500-625 lb. 35.00-37.25. Bulls- Choice 57.00-62.00, Good 50.00-56.00, Medium 45.00-49.00.

Our last special Spring Feeder Cattle Sale will be May 7 at 7 p.m. We'll have 8 choice dry fed steers 1 yr. old weighing 900-1,000 lbs. Also two registered Jersey cows. First calf born Aug. 1985.

Frederick Livestock Auction

Monday, April 28, 1986

Butcher Cows very active 2.00-3.00 higher. Good 38.00-42.00; Standard & Utility 33.00-37.00; Canners 28.00-32.00; Shelly 30.00 down.

BULLS: 1.00 higher. Good 42.00-43.75; Medium 38.00-41.00. Steers: Standard 38.00-40.00.

BUTCHER HOGS: 1.00 higher. 230-260 lbs. 39.50-41.50; 270-290 lbs. 37.50-39.50.

SOWS: 600-680 lbs. 36.50-39.50.

VEAL CALVES: mostly steady. Good-Choice 70.00-80.00; Standard 61.00-69.00; Stocky & Thin 53.00-60.00; Light Calves 38.00-46.00 Weak & Rough 37.00-Down

CALVES RETURNING TO FARM: strong demand, \$10 higher.

HOLSTEIN HEIFERS: 90-120 lbs. 48.00-53.00.

HOLSTEIN BULLS: 85-95 lbs. 80.00-100.00; 100-115 lbs. 105.00-115.00.

LAMBS: Good Lightweights 71.00-120.00; Medium 50.00-70.00.

STOCK CATTLE: Steady prices. Steers: Good 55.00-61.00; Medium 50.00-54.00. Heifers: Choice 51.00-55.00; Good 45.00-50.00; Medium 39.00-44.00. Bulls Good 53.00-58.00; Medium 48.00-52.00. Open Daily Heifers 49.00-55.00; Springing Heifers: to \$735.00.

PIGS & SHOATS: Few offered. By The Head 20-35 lbs. 22.00-28.00.

Looking For More Farm Income? OPPORTUNITY KNOCKS IN THE HOG BUSINESS

We're Contracting New Farrowing Units. We Have The Programs To Make Your Hog Operation Successful.

All Inquiries Confidential

Send Name, Address, County and Phone Number to:

Lancaster Farming

Box 366, L-37

Lititz, Pa. 17543



D & H Cattle Transport

Local and Long Distance Hauling With A 24 Ft. Gooseneck Trailer

Call Don At

717/284-2580

Lancaster, Pa

York County Livestock Sales Ltd.

On PA Route #24 between Stewartstown and New Park

Special Feeder Sale Thursday, May 15 7 P.M.

150-250 Head Expected Cattle Accepted After 7 A.M. Thursday, May 15

Contact Stan Nagle
Auct. (717) 993-2564
Home (215) 566-3239

Hay Sale - Sat., May 17 - 10 a.m.

LIVESTOCK HAULING

Dependable Service
6 Possum Bottom Tractors and Trailers
Call Anytime

Vintage Sales Stables, Inc.
L. Robert Frame Manager

Office 717-442-4181
Office & Home: 215-458-5060
Office & Home: 215-458-8518

SPECIAL FEEDER CATTLE AUCTION

Vintage Sales Stables, Inc., Rt. 30 East, Paradise, PA

FRIDAY EVENING, MAY 23, 1986 7 P.M.

All weights and breeds. We need feeder cattle for this auction. Call for information:
717-768-8204
215-458-8518
L. Robert Frame Mgr.

TOP PRICES FOR DOWN, CRIPPLED AND AS IS COWS, BULLS & STEERS

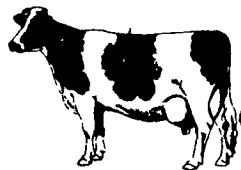
Slaughtered Under Federal Inspection
Paid On Dressed Weight

Tom Mulvaney
Livestock Trucking
(201) 454-4247

HANDLING: Warren, Hunterdon, Sussex And Somerset Counties, New Jersey

IN PENNA:

Northampton, Bucks And Lehigh Counties



SPECIAL SALE

Thursday, May 15th 11 AM

• 250 Head Of Western PA Cattle, Heifers & Steers, Weighing 500 To 800 Lbs. Angus, Charolais And Herefords, All Pre-Conditioned.

100 Head of Northern PA Cattle, Heifers & Steers, Weighing 500 To 700 Lbs., All Pre-Conditioned.

Walter M. Dunlap and Sons

Lancaster Stockyards Tel. (717) 397-5136

An Old Line Commission Firm Keeping Abreast With The Times



CONGRATULATIONS

to all those producers who forward contracted cattle for April delivery at \$60.00

CALL:
Ron Manley
Mike Orndorff
717-761-2740
800-382-1356



* For market reasons contract deadline for June delivery extended until May 9!

PENNSYLVANIA FARMERS ASSOCIATION

SWINE PRODUCTION SALES AND SERVICE

Complete Feeding Programs and Services

Feeding Programs to Meet Your Individual Needs

Computerized Record Keeping System

Providing Veterinarian Service

PA. Toll Free
1-800-468-5524



419 W. High Street
Elizabethtown, PA
17022

Supplying Farm Fresh Feeder Pigs

Marketing and Hedging Services

Marketing of Genesis Breeding Stock

Developing Individual Financial Programs

Direct Dial
(717) 367-1525