

**35 TRUCKS AND TRAILERS**

1972 GMC truck, 12' side chipper, dump body and crew cab, good condition, \$6,500 215-885-1032.

1973 Ford Loysville 700, 5&2 390 engine w/16' Parkhurst grain dump body, no rust, garage kept, MD inspected, \$8,500. 301-898-7426.

1974 Ford W-9000 C.O.E. tractor, NTC 350, 12513RR transmission, Budd wheels, good condition. 717-653-8137.

1974 Ford W-9000, 350 Cummins, new small Cam, rebuilt injectors & fuel pump, trans. recently majored, 10.00x22 tires, all aluminum Budd wheels, Wetline, PS, PB, \$10,500 / b.o. 215-273-3211.

1975 LN750 Ford Truck, 391 engine, 5-speed, 18' flat body, double swinging tail gate, new paint, runs good, \$5500 or best offer. Berks Co., 215-488-6156 after 4 p.m.

1976 Ford Cabover with tag, Cat 3208, 5+2, dual fuel tanks, power steering, air brakes, 54,000 GVW, 10.00x20 Bridgestone radials, (like new), good condition. Must sell. \$6,000. 302-653-4408

1977 Int. C01810B 26' cattle truck, air brakes, 5x2, PS, 10x20 rubber, \$3,500.; 1972 46' Wilson straight cattle trailer, new rubber, brakes, drums, bearings, seals, \$3,500.; Truck tires, casings, rears, axles, other truck parts; 53' house trailer frame, tri axle, heavy duty, Best Offer. Selling due to ill health 201-638-6234

1978 Chevy Beauville 20 window van, 350 auto, AC, tilt, cruise, new radials, rally wheels, clean, \$3,950 717-626-1564 dealer.

1979 Chevy pickup, 3/4 ton, PS, PB, auto., brown, beige paint, no rust, \$2550 / offer. 717-949-2536.

Construction Trailers Lo-Boy, new, 15" wheels, 2" ball hitch, fenders, 2" pine flooring, electric brakes, 8000# rating, 14x6 1/2, \$1350. 16x6 1/2, \$1400. 18x7, \$1500. Phone 215-346-7340.

FOR SALE: 15' Stoltzfus SS fertilizer body w/all hydraulic controls. 215-273-3095.

FOR SALE: '65 Int. truck (21,000 GVW), dump bed and hydraulics, 5x2 trans, rear axle, and other miscellaneous parts. 717-684-3579.

1965 White 6 or 8 horse van, 26' body, back opens for multiple use, excellent condition, new paint, inspected, \$5,500; (2) 2 horse Shoop trailers, \$1,200 and \$975. 215-286-5222.

1966 IH C01800 Flatbed truck, V8, 5+2, 10-20 tires, air brakes, \$950 717-384-4319

1970 Mack F Model 318 Detroit 13SP TA. Cumb Co. 717-776-5631.

1971 Freightliner, 903 Cummins, 13SP w/wet line; 1974 26' aluminum traico dump trailer w/ grain tarp, 20' rubber. Balto. Co., MD. 301-357-5088.

1972 F350 9' factory stake, 11,000 GVW, 15,000 miles, like new, \$5,000.; 1981 F100 300 C J, 4 speed O.D., fiberglass cap, 59,000 miles, 2 tone, very good condition, \$5,200. 717-799-5744

FOR SALE. Wet line pump and PTO for 13 speed Fuller trans., \$225. Lanc. Co. 215-484-2233.

Ford LN9000, 20' steel grain body, 30 ton hoist, drive train needs work 301-778-2372, 8 to 4.

Ford Louisville Grain Truck, new tires, 16 Midwest dump, \$6400 or offer. 717-949-2536.

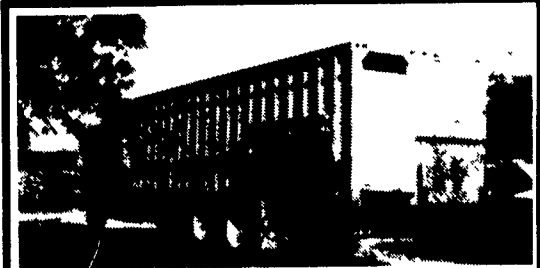
Fork lift truck 6000 lbs capacity, \$1,700; power generator 10KW 110 220 volts w/engine, \$650 717-652-1957.

**MCDONNELL DOUGLAS TRUCK SERVICES INC.**

**A FULL SERVICE LEASING COMPANY 717-569-2648**

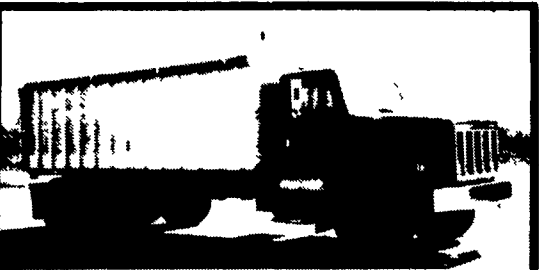
- 1982 Mack R-Model, 300 Eng., 5 Spd., P/S, A/C, Only 135,000 Miles
- 1980 LN800 Ford, 17' Reefer, 3208 CAT, Thermo King w/stdby
- 1979 LN7000 Ford, C & C, 3208 CAT, 5 & 2 Spd., P/S
- 1981 Mack Midliner, 18' Van with L/G, 5 Spd., P/S
- 1981 IHC, Gas 392, 22' Van, 5 Spd., P/S
- 1981 GMC, 12' Step Van, Alum., 350 GM Gas, 4 Spd., P/S
- Van Bodies: 16' - 20' - 22', CSD, Rollup Rear Doors
- Stake Body: 16' w/Stake Sides

**(2) ALUMINUM DUMP BODIES**  
For Tri-Axle Truck,  
16' Long  
Call Zook Molasses Co.  
800-662-7464



Peterbuilt, 30' Eby body, 350 Cummins, 13 speed, 11.24x5 tires, tip top shape, will sell complete or separately. 716-293-3730

**1983 Kann Hopper Grain Trailer**  
aluminum construction, 40' closed top, 4 access doors 2x3, 11x22.5 tires, tandem axle, excellent condition.  
**609-586-1111**  
Asset Leasing, Inc.



1979 Int. Grain Dump, 466 IH Diesel, 13 sp., 16 front, 38 rears, roll tarp, 20 foot, Eby body \$29,500  
**215-593-6097**

**WANTED**  
Late model Cattle Truck, 22' or longer aluminum body. Tom Mulvaney, 201-454-4247

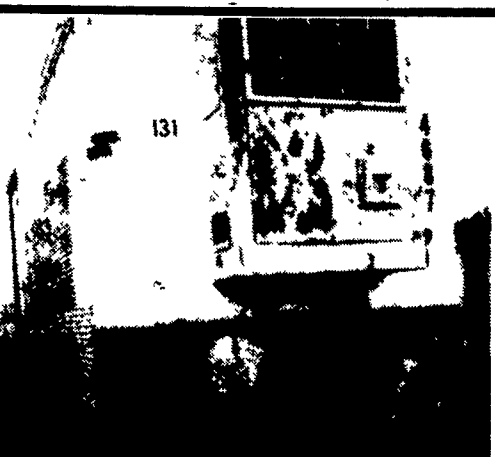


1983 GMC, G-35, 12 ft., hi-cube, 10,000 GVW, AT, PS, PB, radial tires, 4,000 miles on new 6.2 diesel, nice clean truck, \$7,250  
**717-354-3199**  
**717-354-9422**

- 1973 Ford LN-9,000, 34,000 GVW truck, 238 Detroit, 10 speed, P/S, A/C ..... \$3,900
  - 1980 Ford LN-7,000, 16' Dry Van, 3208 Cat 5+2 trans., 27,500 GVW, P/S, exc. cond... \$12,500
  - 1981 Chev. C-30, 1 ton pickup, auto., P/S, P/B, 350, V-8, Hi miles, looks and runs well ..... \$2,900
  - 1983 GMC 3500 Vandura long wheelbase, P/S, P/B, automatic, 1 ton..... \$3,300
  - 1980 Volvo F-716 sleeper tractor, A/C, P/S, 8 speed, Ovhl., 230 HP diesel w/warranty, 68,000 total miles..... \$16,500
- Call **717-626-0945 or 717-859-3168**



**White 4-150 Tractor**  
3208 Cat - Dual Wheels - Dual Remote - 2,000 Hrs. on Engine - Good Condition - First \$8,000.00.  
Ephrata, Pa.  
**717-733-1602**



**40 ft. Fruehauf Reefer Trailer /NWD Thero King Unit \$2500**  
**Curry Supply Co.**  
Curryville, PA  
**814-793-2829 or 4481**

**FOR SALE**  
**'78 WHITE LIME TRUCK**  
Tandem Axle, 350, 9 Speed, 13 Ft. Box, Fully Hydraulic w/Auger Sowers. Two Axle Auger Trailer  
**BOTH IN EXCELLENT CONDITION**  
**\$32,000 or BEST OFFER**  
**1 (717) 354-7907**



**Butler 3800 Gallon Rubber Lined Tanker ideal for Nitrogen etc.**  
**\$2900**  
**Curry Supply**  
Curryville, PA  
**814-793-2829**

**YES!! ENGLE FORD DOES MAKE IT EASIER!!**  
**Over 100 New & Used Trucks, Vans & 4x4's**

- 84 Jeep CJ7 Hardtop 1 owner Low, Low Mileage
- 83 Ford D150 Cargo Van 6 Cyl. AT, PS, PB, Hard to Find
- 83 Ford F150 4x4, V8, Auto, PS, PB, 1 Owner
- 83 Chev S10 Super Cab V6, 5 Spd., PS, PB, Topper Real Sharp
- 83 Mazda B 2000 Pickup, 4 Cyl, 5 Spd, Long Wheel Base, Mighty Mite
- 79 Ford LN 7000 Diesel 5 Spd 2 Spd Axle Cube Body Heavy Hauler
- 76 Dodge Ram Charger, 4x4, V8, AT, PS, PB, Myers Power Angling Plow

**ENGLE FORD, INC.**  
Rt. 147 North  
Millersburg, PA 17061  
In PA The Call's On Us 1-800-242-8075  
Out of State Call 1-717-692-4841

**USED TRUCKS**



'84 Ford F350 Dual Wheel, Cab & Chassis, Diesel 6.9, AT, PS, PB, 2 Tanks, 30,000 Miles **\$9,500**



'83 Chevy Suburban Silverado, AT, PS, PB, Air, AM/FM, 2 Tone Paint, Rallye Wheels, 46,000 Miles, Ex. Cond. **\$8,900**



'84 Chevy S10 4x4, 5 Speed, 6 Cyl., AM/FM, Air, 44,000 Miles **\$7,800**



'85 Ford E250 Cargo Van, AT, PS, PB, AM/FM, 6 Cyl., 15,000 Mi. **\$8,950**

Used Ford Dual Wheel 8 Ft. Pickup Bed ..... **\$700**

**MARTIN'S AUTO SALES**  
725 E. Main St., New Holland, PA 17557  
**(717) 354-9967**