

"Agexport '86" to Demonstrate US Ag Leadership

WASHINGTON, D.C. — The National Commission on Agricultural Trade and Export Policy today announced plans for a week-long program in the Nation's Capital to demonstrate U.S. agricultural commitment to leadership in world trade.

During the June 16-20 series of top-level conferences and ceremonies, the 35-member independent National Commission will unveil its final recommendations on U.S. trade policy to Congress and President Reagan. The blue-ribbon advisory group was formed by Congress in late

1984 to recommend improvements in the nation's agricultural trade policy. It will complete its assigned task in July, 1986.

The mid-June program in Washington, D.C. will be called "agexport '86," and is already being billed as America's most important agricultural trade event in recent memory. Both U.S. and world business and trade leaders are expected to participate. President Reagan is planning to sign a Congressional Resolution proclaiming June 16-20, 1986 as National Agricultural Export

Week.

The National Commission will meet in Washington, D.C. in full session on Friday, April 11, to finalize its policy recommendations. During its all-day meeting at the Ritz-Carlton Hotel, it will consider policies on reorganization of the U.S. Department of Agriculture to place added emphasis on international trade; upcoming GATT negotiations; market development programs of other nations; promotion programs of state departments of agriculture; proposals on foreign exchange, subsidies, and Third World debt; and international food aid programs. The important trade policy recommendations of the National Commission have been requested by Congress to help formulate omnibus trade legislation in the 99th U.S. Congress.

Earnings from U.S. agricultural exports have contributed an

estimated \$333 billion to the nation's balance of payments during the past decade, stimulating over one trillion dollars in national economic activity. But these exports have been declining since 1981, down more than \$36 billion in actual sales in the five-year period. Congress acted during its 1984 session to form a National Commission to develop an action plan to restore effective competition on world markets.

The National Commission has called on leaders of the private business community to join with government officials in the united effort to address this critical national problem. During agexport '86, these national leaders will address the National Commission's final policy recommendations in a broad major effort to:

• Improve U.S. agriculture's leadership and competition in

trade affairs;

- Respond to unfair competition in world markets;
- Expedite current GATT arbitration and settlement mechanisms;
- Create new demand in international markets;
- Manage macroeconomic influences;
- Improve the U.S. food aid system;
- Define international cooperation in trade matters;
- Improve export enhancement programs.

Agexport '86 will provide the national forum to begin the important task of revitalizing and expanding America's agricultural trade with other nations. Program details and registration materials are available from the National Commission at: 1515 South Building, 14th & Independence Avenue, S.W., Washington, D.C. 20250. Telephone: 202/488-1961.

Delaware Director Honored

Dr. Richard E. Fowler, Delaware Cooperative Extension director, has been named the 1986 Distinguished Alumnus of Pennsylvania State University's program in animal production. He earned his bachelor's degree in animal science from Penn State in 1958. He also holds a Master's degree and doctorate in animal science from the University of Maryland.

Fowler joined the University of Delaware in 1968 as an assistant professor and extension livestock specialist. In this capacity he helped establish the university's swine research unit near

Georgetown, as well as an on-farm swine testing program, a progeny test and a boar test.

In 1982, Fowler was appointed assistant director of extension with responsibility for agricultural programs. He became director of the Delaware Cooperative Extension system two years later.

Fowler is no stranger to extension. His father was an agricultural agent in Montour County, Pa. for 30 years. His twin brothers, David and Donald, are both extension agents in Pennsylvania counties. Collectively, the four have served over 100 years in Cooperative Extension.

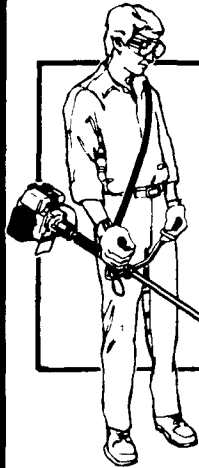
FISHER AND STOLTZFUS TRAILER SALES

717-768-3832 or 717-768-3532
East of New Holland, Pa.



6x16 Stock Trailer
Dion Forage Wagon
8x20 Gooseneck Flatbed

STIHL... The Cutting Edge



FS 61AVE

The FS-61AVE Trimmer. Light, tough, durable. A powerhouse against weeds and brush. Special low prices on Stihl's accessory kits help give you the edge in the battle. And keep it.

CLEAN UP BIG SAVINGS AT YOUR STIHL DEALER

A & B SALES & SERVICE
2 Miles South of Rt. 23 Along 772
Thru Monterey RD 1 Ranks, PA

STOLTZFUS WOODWORK
RD Gap, PA Box 183
1 Mile North Rt. 897 From Gap
Phone 717-442-8972

HOLLINGER'S LAWN & GARDEN EQUIP.
1755 W Main St. (Loc. on Rt. 322)
Ephrata, PA 717-738-1131

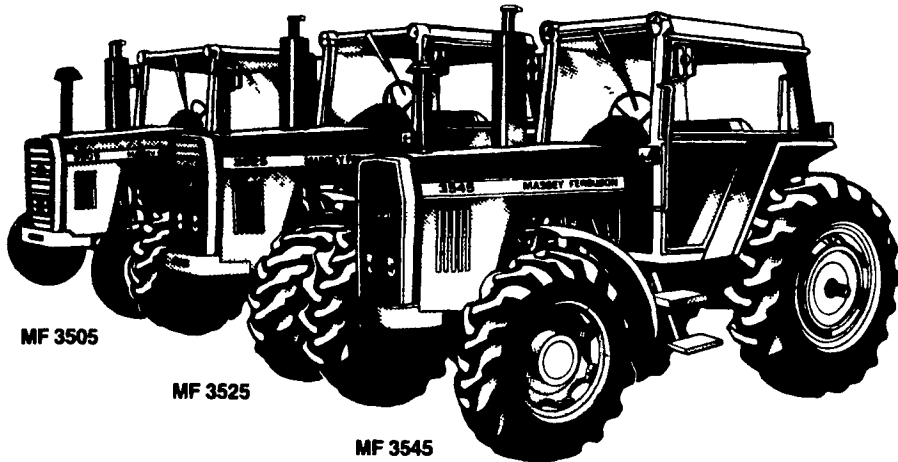
MARTIN HARDWARE & EQUIPMENT CO.
Rt. 501 1 1/2 Miles South of Schaefferstown, PA
Phone 717-949-6817

SHARTLESVILLE FARM SERVICE
RD #1 Box 1392 Hamburg, PA
Phone 215-488-1025

STIHL
THE WORLD'S LARGEST SELLING CHAIN SAW

MF Value Leaders

Need performance? We'll take on all comers!



MF 3500 series tractors don't have to take a back seat to anyone in their power class. In fact, with optional 4-wheel drive, the MF 3500 tractors can often do the work of our competitors' higher-horsepower 2-wheel drive models — and do it more economically! Stop by today for a demonstration to see for yourself.

- ★ 90 to 125 hp*, 6-cylinder Perkins diesels
- ★ Choose 2- or 4-wheel drive models
- ★ Get 16 speeds from 8-speed synchromesh transmission with 2-speed Powershift
- ★ Electronic 3-point hitch for precise implement control
- ★ High visibility, spacious comfort cab

*Mfr. rated PTO horsepower

N.H. FLICKER & SONS, INC.
Maxatawny, PA
Ph: (215) 683-7252

LEBANON VALLEY IMPLEMENT CO.
700 E. Linden St.
Richland, PA
Ph: (717) 866-7518

ABRACZWSKA'S FARM EQUIP. INC.
RD 1, Catawissa, PA
Ph: (717) 356-2323
(South on Rt. 42)

M.M. WEAVER & SON
N. Groffdale Rd.
Leola, PA 17540
Ph: (717) 656-2321

R.W. KELLER SALES
Perkasie, PA 18944
Ph: (215) 257-0101

ARNETT'S GARAGE
Rt. 9 Box 125
Hagerstown, MD
Ph: (301) 733-0515

MARLIN W. SCHREFFLER
Pitman, PA
Ph: (717) 648-1120

S.G. LEWIS AND SON
West Grove, PA
Ph: (215) 869-9440
869-2214

Massey-Ferguson
Where farmers' ideas take root.