



Livestock market and auction news

Virginia Cattle

Richmond, Virginia
Northern, Va.
Thurs., Apr. 17 to
Wed., Apr. 23, 1986
Report Supplied by VDA
Head Count: 6,257

Trend: Steady to 3.00 higher.
STEERS: Medium 1 300-500 lbs. 61.00-72.50; 500-700 lbs. 53.75-68.50; 700-1000 lbs. 44.25-58.50. Large 1 300-500 lbs. 64.00-69.00; 500-700 lbs. 58.00-69.00; 700-1000 lbs. 53.25-61.00. Small 1 300-500 lbs. 55.00-67.50; 500-700 lbs. 50.00-64.00; 700-1000 lbs. 43.00-47.00.
HEIFERS: Medium 1 300-500 lbs. 50.00-60.25; 500-700 lbs. 42.00-54.00; 700-900 lbs. 40.50-49.50. Large 1 300-500 lbs. 50.00-58.00; 500-700

lbs. 43.00-55.25; 700-900 lbs. 43.00-45.50. Small 1 300-500 lbs. 45.00-53.00; 500-700 lbs. 40.00-49.00.

South & Southwest Va.

STEERS: Medium 1 300-500 lbs. 62.00-71.00; 500-700 lbs. 55.50-67.00; 700-900 lbs. 49.00-55.50. Large 1 300-500 lbs. 64.00-70.50; 500-700 lbs. 53.50-66.50; 700-900 lbs. 50.00-55.00. Small 1 300-500 lbs. 55.00-65.00; 500-700 lbs. 49.00-57.50; 700-900 lbs. 47.50.

HEIFERS: Medium 1 300-500 lbs. 49.00-59.50, 500-700 lbs. 45.00-59.00; 700-900 lbs. 48.00. Large 1

300-500 lbs. 49.00-58.00; 500-700 lbs. 45.50-54.00. Small 1 300-500 lbs. 43.00-55.00; 500-700 lbs. 35.00-46.00.

Shenandoah Valley Livestock

Harrisonburg, Va.
Saturday, Apr. 19

Report supplied by auction
FEEDER CATTLE: Trend: All classes \$1.00-\$1.50 higher.

STEERS: M&L-1 300-500 lbs. 65.00-72.50; 500-700 lbs. 53.00-69.00; 700-1000 lbs. 52.00-54.50. S-L&M&L-2 300-500 lbs. 58.00-67.00; 500-700

lbs. 48.50-64.00; 700-1000 lbs. 43.00-52.75.

FEEDER BULLS: M&L-1 200-500 lbs. 59.50-72.50; 500-700 lbs. 53.00-59.00. S-L&M&L-2 200-500 lbs. 63.00-69.00; 500-700 lbs. 52.00-62.00.

HEIFERS: M&L-1 200-500 lbs. 50.00-56.50, 1 lot 59.00; 500-700 lbs. 45.00-55.00. S-L&M&L-2 200-500 lbs. 41.00-52.00; 500-700 lbs. 37.50-42.00.

STOCK COWS: Beef w/calves \$345.00-\$430.00; Baby Calves \$21.00-\$110.00, Mostly \$50.00-\$90.00.

SLAUGHTER COWS: Trend, \$2.00 to \$3.00 higher; Utility & Commercial 2-4 30.0-36.00; Canner & Cutters 1-3 25.00-30.00.

SLAUGHTER BULLS: 1 & 2 37.00-46.50.

LAMBS: Trend, Spring \$3.90 higher; Blue O High Choice & Prime 81.90; Slaughter Ewes 15.0-19.00.

HOGS: US 1-3 200-240 lbs. 38.00; Sows 1-3 31.00-38.50; Boars 26.25.

VEAL: Choice and Prime 74.50-80.00.

SLAUGHTER CALVES: Good & Choice 44.00-56.00.

slaughter cows 35.50-37.75; 4-5 32.00-35.00; Cutter & Boning Utility 32.50-37.00; Canner & Low Cutter 28.00-33.00...Shells down to 25.75...Yield Grade No. 1 1330-1805 lbs. slaughter bulls 42.00-46.75; Few Yield Grade No. 2 1125-1245 lbs. 35.00-39.50...FEEDER CATTLE: Medium & Large Frame #1 300-600 lbs. steers 50.00-61.25; Medium & Large Frame #1 300-575 lbs. Heifers 45.00-56.00; 580-721 lbs. 38.00-45.00; #2 650-840 lbs. 34.00-40.00; Medium & Large Frame #2 400-660 lbs. Bulls 30.00-42.00.

CALVES 304. One Prime Vealer at 93.00; Choice 72.00-84.00; Good 65.00-75.00; Standard & Good 90-115 lbs. 35.00-46.00; 65-85 lbs. 35.00-40.00; Utility 50-80 lbs. 20.00-24.00...FARM CALVES: Holstein bulls 90-135 lbs. 55.00-70.00. Beef Cross Bulls & Heifers 70-135 lbs. 40.00-80.00; few at 97.50.

HOGS 404: Barrows & Gilts mostly \$1 higher. US No. 1-2 220-235 lbs. barrows and gilts 41.00-41.50; No. 1-3 210-250 lbs. 40.00-41.00; No. 2-3 210-255 lbs. 38.50-39.75; No. 2-4 230-270 lbs. 36.00-38.50; No. 3-4 265-315 lbs. 31.50-35.50; No. 1-3 150-195 lbs. 33.75-36.50...SOWS steady. US No. 1-3 450-730 lbs. sows 35.00-39.75; Few 300-450 lbs. 33.00-35.00...BOARS 25.00-29.00.

FEEDER PIGS 20. US No. 1-3 30-45 lbs. feeder pigs 24.00-38.00 per head. One Lot No. 1-3 145 lbs. at 39.00 cwt.

SHEEP 181. High Choice & Prime 40-75 lbs. Spring Slaughter Lambs 78.00-92.00; 75-120 lbs. 70.00-78.00; Mix Good & Choice 45-60 lbs. Feeder Lambs 64.00-66.00...GOATS 24.00-40.00 per head.

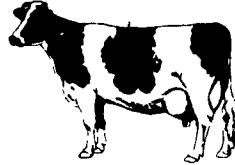
TOP PRICES FOR DOWN, CRIPPLED AND AS IS COWS, BULLS & STEERS

Slaughtered Under Federal Inspection
Paid On Dressed Weight

Tom Mulvaney
Livestock Trucking
(201) 454-4247

HANDLING:
Warren, Hunterdon, Sussex
And Somerset Counties, New Jersey

IN PENNA:
Northampton,
Bucks And
Lehigh Counties



SPECIAL NOTICE

Vintage Sales Stables, Inc.
We receive hogs for auction every Sat. morning from 7 a.m. to 10:30 a.m. Send Sows, Boars & Finished Hogs We Have Orders For 600-800 Hogs. Every Sat.
L. Robert Frame Mgr.
Phone 717-768-8204
442-4181

ANNUAL SPRING FEEDER CATTLE AUCTION at LUTHER'S LIVESTOCK COMMISSION MARKET

Route 22
Wassaic, Dutchess County, New York
THURSDAY, MAY 1, 1986
1:00 P.M.

150± Head of Steers and Heifers 150±

There will be a large selection of all beef breeds of steers, heifers, and bulls, ranging from 350 lbs. to 700 lbs. Consignments for this sale will be taken right up until sale time.

* Please inoculate your calves early.
Farm pickups available.

TERMS OF SALE: Cash or good check day of sale; new customers must present a bank letter of credit to pay by check.

Delos "Los" Luther II
Auctioneer & Sales Manager
914-373-8171 914-373-8172 914-373-8045



ATTENTION FARMERS

EVERY MONDAY
HATFIELD PACKING CO. and
MOYER PACKING CO.

Will Receive Your Hogs and Cattle at the
DANVILLE LIVESTOCK MARKET
RD 4, Danville, PA

- We will receive your hogs from 8 AM to 12 Noon every Monday. Your hogs will be weighed and paid for immediately.
- We will also accept your sows & boars.
- Your cattle will be received from 12:30 to 5 P.M. We will either pay you for your cattle immediately or you may sell them dressed weight.
- There will not be a commission or yardage fee deducted from your check.
- You may call our office Monday morning and we will be able to tell you the base price for hogs for the day.

MELVIN M. LEHMAN - Owner
Danville Buying Station
Phone: 717-275-2880

SPECIAL FEEDER CATTLE AUCTION

Vintage Sales Stables, Inc., Rt. 30
East, Paradise, PA
FRIDAY EVENING, MAY 23, 1986
7 P.M.

All weights and breeds. We need feeder cattle for this auction. Call for information:
717-768-8204
215-458-8518
L. Robert Frame Mgr.

D & H Cattle Transport

Local and Long Distance Hauling
With A 24 Ft Gooseneck Trailer

Call Don At
717/284-2580
Lancaster, Pa.



Be Wise...
Check our prices before you buy!!

SPRAY MATERIALS

We will deliver in the Delmarva area.

- | | | |
|-------------------|------------|-------------|
| * ATRAZINE | * BLADEX | * EXTRAZINE |
| * DUAL | * BANVEL | * LORSBAN |
| * LASSO | * LOROX | * FURADAN |
| * SUTAZINE | * PARAQUAT | * COUNTER |
| * ROUND UP | * PRINCEP | * DYFONATE |
| * LASSO- ATRAZINE | | |

SAVE ON BULK HERBICIDES

- BICEP • LASSO-ATRAZINE • PROWL

MELVIN R. WEAVER

2213 Leabrook Road, Lancaster, PA 17601
Ph: 717-569-6576 or 898-8354

SWINE PRODUCTION SALES AND SERVICE

Complete Feeding Programs and Services

Feeding Programs to Meet Your Individual Needs

Computerized Record Keeping System

Providing Veterinarian Service

PA. Toll Free
1-800-468-5524



419 W. High Street
Elizabethtown, PA
17022

Supplying Farm Fresh Feeder Pigs

Marketing and Hedging Services

Marketing of Genesis Breeding Stock

Developing Individual Financial Programs

Direct Dial
(717) 367-1525